

Florida State University

Centers and Institutes Review 2016

September 2017

Executive Summary

The purpose of this review is to assess the activities of 13 Centers and Institutes at FSU. This year's review is wide-ranging, including Centers and Institutes from 6 different entities. Six Centers and Institutes are housed in the College of Human Sciences and three are in the College of Social Work. One is located in the College of Arts and Sciences, one in the College of Criminology and Criminal Justice, another in the College of Fine Arts and one is housed in the Provost's Office.

This review contains the following Centers and Institutes:

- Learning Systems Institute (LSI)
- Center for Criminology and Public Policy Research
- The Maggie Allesee National Center for Choreography
- Institute of Molecular Biophysics
- FSU Retail Innovation Center
- Center for Advancing Exercise and Nutrition Research on Aging
- Institute of Sports Sciences and Medicine
- Center on Better Health and Life for Underserved Populations
- Center for Couple and Family Therapy
- FSU Family Institute
- Institute for Social Work Research
- Institute for Family Violence Studies
- Trinity Institute for the Addictions (*Inactive*)

Given the significant number of topics these Centers and Institutes address, it is not surprising they represent a variety of activities, publications, conferences and opportunities for both faculty and students. Three of the Centers serve as a focal point for research to be used in the state and in communities—one in education, one in criminology and one in social work. One of the Centers focuses on choreography and dance. One of the Institutes studies proteins and the correlation of their structure with their function. Another is focused on providing educational programming and research in retail management. One of the Institutes focuses on research and education in sports sciences and sports medicine, human performance and injury prevention. One of them focuses on aging; another on medically underserved populations. Three of them are involved with family issues. Five of them are interdisciplinary.

Eight of them receive E&G funding. The ROI calculations range from 1:1.58 to 1:40.42. Three of the Centers are partially funded with an endowment. Federal funds and private funds are the most prevalent sources of funding.

Each of these Centers and Institutes demonstrate activities that are consistent with their mission. They provide a range of research, education and counseling services that benefit the community and are appropriate to their mission. Their efforts provide opportunities for faculty and students alike. They should continue their activities. None of them requires a change in classification.

All are recommended to retain their current status—Trinity Institute for the Addictions remains inactive; all others remain active.

The Institutes and Centers reviewed in this report include:

Learning Systems Institute (LSI)

Director: Jeffrey Ayala Milligan

The Learning Systems Institute works to bridge the gap between theory and practice in education. LSI's experts apply the best research to help teachers utilize this knowledge in their classrooms. LSI strives to be an internationally recognized, university-based research and development organization that measurably improves the learning and performance of organizations and individuals. LSI helps strengthen and update teaching practices in Florida and around the world, drawing on the talents and experience of LSI's own experts and from faculty across the university and from other institutions.

Center for Criminology and Public Policy Research

Director: George Pesta

The Center's primary purpose is to support data collection and crime and justice policy research initiatives that promote social justice. It works to obtain and maintain external funding to support policy-relevant research; conduct rigorous, policy-relevant empirical research, disseminate and promote evidence-based policy and practice at the national, state, and local levels; and provide opportunities for students to participate in research, publications, and policy related activities.

The Maggie Allesee National Center for Choreography

Director: Carla Peterson

The mission of the Maggie Allesee National Center for Choreography is to raise the value of the creative process in dance by providing a model of support for professional choreographic creativity within a comprehensive research university; providing choreographers access to a stimulating environment where experimentation, exploration and life-long learning are both valued and encouraged; and providing opportunities for the students, staff, and faculty, the community of Tallahassee and the national dance field at large to engage with the creative process in dance.

Institute of Molecular Biophysics (IMB)

Director: Peter Fajer

The Institute of Molecular Biophysics (IMB) is a multidisciplinary institute with the primary unifying theme the use of biophysical and biochemical tools to probe living processes. IMB is the home of the Molecular Biophysics (MOB) graduate program which trains Ph.D. students under the supervision of faculty from six FSU departments. A subset of IMB faculty constitute the Structural Biology Program, a research group that studies the structure and function of large molecules and molecular assemblies.

FSU Retail Innovation Center

Co-directors: Ann Langston and Luke Hopkins

The Retail Center serves as a multidisciplinary center, providing educational programming and research in retail management, merchandising, and fashion design to students, faculty, and industry partners as a means to develop strong future leaders and bridge the academic and business communities.

Institute of Sports Sciences and Medicine

Director: Chester A. Ray

The Institute serves as a multidisciplinary, developmental center, providing research and educational programs in sports sciences, sports medicine, athletic/human performance, and injury prevention to the medical and scientific community and the general public.

Center for Advancing Exercise and Nutrition Research on Aging

Director: Bahram H. Arjmandi

To develop translational research across disciplines and levels of biological organization through nutrition and exercise to improve the health of our aging population. The Center focuses on analyzing the functional decline in aging bone, brain and muscle cells using magnetic resonance (MR) imaging with the intent to improve the quality of life for aging individuals.

Center on Better Health and Life for Underserved Populations

Director: Penny A. Ralston

The mission of the Center is to improve health of underserved populations through developing and evaluating community-based interventions.

Center for Couple and Family Therapy

Director: Kristen Greene

The Center generates, coordinates, and facilitates scholarly research and training in the area of marriage and family through a systematic program of research, development, and evaluation; and, through its Family Therapy Clinic comprehensive training in family psychotherapy.

FSU Family Institute

Director: Frank Fincham

The Florida State University Family Institute is a multidisciplinary unit that brings together faculty, students, government, and community resources to provide a centralized source of information, service, research, and critical thinking related to families. Through this collaboration, research, education, policy, and service activities will be carried out. The Institute serves as an important vehicle for bringing together the various talents of those cited above to promote the optimal development of families.

Institute for Social Work Research

Director: James Clark

The mission of the Institute for Social Work Research (ISWR) is to conduct research and training for government and the private sector on social work related issues. ISWR brings together the expertise of scientists and other professionals throughout the university system, the community and the state. This interdisciplinary approach promotes the development of recommendations related to practice, research, policy formulation and program implementation that can contribute to improving the welfare of Florida's citizens.

Institute for Family Violence Studies

Director: Karen Oehme

The mission of the Institute for Family Violence Studies (IFVS) within Florida State University's College of Social Work is to conduct rigorous research, build comprehensive national trainings, and develop and promote sound public policy to support healthy families and reduce all forms of family violence.

Questions for Centers and Institutes (C/I) Review

Mission and C/I activities

1. Please provide contact information, both for management and for budget information.

Name of Center or Institute: **Learning Systems Institute (LSI)**

LSI operates the Center for International Studies in Educational Research and Development and the Florida Center for Research in Science, Technology, Engineering and Mathematics.

Address: C4600 University Center, Florida State University, PO Box 3062540, Tallahassee FL 32306-2540

Phone: (850) 644-2570

Director: Jeffrey Ayala Milligan, Ph.D.

Director e-mail address: jmilligan@fsu.edu

Phone: (850) 645-9207

Budget and funding contact: Gena St. John, assistant director

Contact e-mail address: gstjohn@lsi.fsu.edu

Phone: (850) 644-1603

Web Link: www.lsi.fsu.edu

If multidisciplinary, please list departments associated with C/I:

The Learning Systems Institute is multidisciplinary. Faculty are in the departments of:

- Educational Leadership and Policy Studies
- Instructional Systems and Learning Technology
- Psychology
- Science Education

2. What is the Center's or Institute's mission statement?

The Learning Systems Institute works to bridge the gap between theory and practice in education. LSI's experts apply the best research to help teachers utilize this knowledge in their classrooms.

LSI strives to be an internationally recognized, university-based research and development organization that measurably improves the learning and performance of organizations and individuals.

LSI helps strengthen and update teaching practices in Florida and around the world, drawing on the talents and experience of LSI's own experts and from faculty across the university and from other institutions.

3. *Briefly, what activities are consistently performed that move the C/I toward meeting its established mission? This section should also include activities related to meeting the State Board of Governor's mission. The State Board of Governors mission includes the following:*

1. Strengthen Quality and Reputation of Academic Programs and Universities
2. Increase Degree Productivity and Program Efficiency
3. Increase the Number of Degrees Awarded in STEM and Other Areas of Strategic Emphasis
4. Strengthen Quality and Reputation of Scholarship, Research and Innovation
5. Increase Research and Commercialization Activity
6. Increase Collaboration and External Support for Research Activity
7. Strengthen Quality and Recognition of Commitment to Community and Business Engagement
8. Increase Levels of Community and Business Engagement
9. Increase Community and Business Workforce

Activities:

- a. Engage in international education research — LSI's Center for International Studies in Educational Research and Development has research efforts studying education approaches and systems in a number of nations.
- b. Conduct global education outreach — LSI brings in educators from other countries for intensive study of the U.S. system of education and works with these educators as they put in place aspects relevant to the needs of their home nations.
- c. Serve Florida's education community — LSI's Florida Center for Research in Science, Technology, Engineering and Mathematics created and maintains CPALMS.org, an online toolbox of information, vetted resources, and interactive tools that helps educators effectively implement teaching standards. CPALMS.org is the State of Florida's official source for standards information and course descriptions.
- d. Advance teaching and learning — FCR-STEM's research studies investigate teaching and learning in varied contexts and the impacts of professional development on teacher and student outcomes.

e. Provide high-quality professional development for educators — FCR-STEM designs and delivers intensive professional development for hundreds of K-12 math and science teachers in Florida each year.

4. *Overall Status*

- What is the Center or Institute best known for?

LSI's global education research and outreach has a four-decade legacy of work to improve learning and instruction in developing countries through international partners with government, universities, and non-governmental organizations. CISERD's on-the-ground experience is renowned.

FCR-STEM's CPALMS.org is without peer in providing high quality, vetted materials for K-12 educators. CPALMS.org is the most used education web site in Florida and one of the most utilized in the world, with more than 20 million visitors a year.

- What is the greatest strength of the Center or Institute?

One, LSI has great depth of experience and expertise in international education, and it has success in bringing in talent from other universities as needed to be successful in international settings.

Two, LSI has a record of innovation in using technology to support K-12 teachers and to expand their expertise in critical STEM fields.

Three, LSI has a record of success in securing contracts and grants. Since its establishment, LSI has brought to Florida State University more than \$500 million in contracts and grants. Over the five-year period of this report, LSI secured \$92.7 million in contracts and grants, ranking it second among departments at FSU. Only the National High Magnetic Field Laboratory had more.

- What are the most significant challenges facing the Center or Institute?
Uncertainty in funding at the federal level and mixed signals from Washington on the future of research investment.

Funding –

Please provide the source and amount of expenditures from 2011-2012 to 2015-2016, using the following categories. Please round to the nearest dollar.

Expenditures	2011-2012	2014-2015	2015-2016
University (E&G)	\$2,319,403	\$1,298,580	\$1,674,520
State (General Revenue Other than E&G)	\$0	\$0	\$0
State (C&G or other funds)	\$433,216	\$5,727	\$11,578
Federal (C&G)	\$17,964,297	\$17,797,564	\$14,125,018
Local (C&G)	\$0	\$0	\$0
Private / nonprofit organization	\$239,678	\$3,286	\$7,838
Endowment proceeds	\$0	\$0	\$0
Proceeds from patents or royalties	\$0	\$0	\$0
Sales from services or products	\$102,579	\$165,626	\$251,078
Others (specify) SRAD/SPCC (C&G)	\$532,626	\$1,014,337	\$211,021
Total expenditures	\$21,591,799	\$20,285,120	\$16,281,053

Endowment Information

Is the C/I supported in whole or in part by proceeds from an endowment? **No.**

If so:

- What is the amount of the endowment?
- Where is the endowment managed?
- Does the C/I spend only interest earnings?
- Does the C/I spend part of the capital of the endowment?

Contract and Grant Information

	2011-2012	2014-2015	2015-2016
Number of proposals submitted	16	42	27
Number of proposals funded	12	19	22
Proposals Made Jointly with Individuals not Directly associated with the Center / Institute	2	8	7

Total dollar amount of awards*	\$13,241,108	\$10,879,346	\$10,258,859
---------------------------------------	--------------	--------------	--------------

*Total dollar amount of awards is total of awards awarded in each of these years respectively; the total number of awards managed in those years is much higher, as awards existed in those years from previous years as well.

- Are any of the contracts or grants multi-year? **Yes.**
- How many years does the Center or Institute have left on any current contract or grant? **Up to 3 years.**
- Have any contracts or grants been renewed during this reporting period? If yes, how many? **24**

Other Center or Institute Activities

- Have any patents or royalties been generated? **Yes.** If so, please describe.
 - Curricula licensed to MyStemKits.com LLC for teaching K-12 mathematics using hands-on manipulatives created using 3D printers.
 - License of CPALMS technology to Lost Key Media, LLC. This is a curriculum development and management system licensed to develop and commercialize K-12 marine biology curricula.
 - Learning Ovations, which gives schools evidence-based and rigorously tested interventions and instructional practices that are designed to significantly improve students' achievement.
 - Lexia Learning Systems, which provides technology-based reading instruction with systematic, personalized learning on fundamental literacy skills for students of all abilities.
- Has the Center or Institute applied for a patent that has not yet been granted? **No.** If so, please describe.

Comments or additional information: _____

Employment —**University Positions associated with your C/I**

	2011-2012	2014-2015	2015-2016
Number of Faculty (FTE)	46.27	62.81	49.55
Number of A&P and USPS positions (FTE)	5.93	11.62	11.20
Total Positions	52.20	74.43	60.75

Student Employment (include graduate and undergraduate)

	2011-2012	2014-2015	2015-2016
Number of research assistants employed (FTE)	19.82	5.88	4.53
Number of teaching assistants employed (FTE)	0.00	0.00	0.00
Number of interns (with stipend or OPS)	21	0.00	0.00
Number of interns (without pay)	0.00	0.00	0.00
Total student positions*	60.64	11.76	9.06

*Total student positions equal number of interns plus research assistant FTE x 2, as students generally work a .5FTE appointment.

Other Student Financial Benefits (include graduate and undergraduate)

	2011-2012	2011-2012	2014-2015	2014-2015	2015-2016	2015-2016
	Number	\$ Amount	Number	\$ Amount	Number	\$ Amount
Out of state tuition waivers	N/A	N/A	N/A	N/A	N/A	N/A
Student fellowships	N/A	N/A	N/A	N/A	N/A	N/A
Scholarships	N/A	N/A	N/A	N/A	N/A	N/A
Post-doctoral support	N/A	N/A	N/A	N/A	N/A	N/A
Amount of student travel support	N/A	N/A	N/A	N/A	N/A	N/A

Amount of registration for student conference attendance	N/A	N/A	N/A	N/A	N/A	N/A
Other support (specify)	N/A	N/A	N/A	N/A	N/A	N/A

Comments or additional information: _____

Research and Extension —

Note: Web-delivered and CD Rom publications are to be counted in these totals.

Publications (in Refereed Journals, Peer-Reviewed Books or Peer-Reviewed Chapters)

Do not include those credited to the faculty member's primary academic department that are unrelated to the C/I mission.

	2011-2012	2014-2015	2015-2016
Number of faculty publications	8*	23	24
Number of student publications	0	0	4
Number of publications authored jointly with other faculty at FSU	1	5	6
Number of publications authored jointly with students in the C/I	1	1	6
Number of publications authored jointly with faculty at locations other than FSU	8	19	19

*Does not include publications by Florida Center for Reading Research faculty or by faculty members no longer with the Learning Systems Institute

Please have a list of relevant publications available if requested.

Other Publications and Conference Papers

	2011-2012	2014-2015	2015-2016
Number of extension or outreach publications	N/A	N/A	N/A
Number of <u>national</u> conference papers submitted	N/A	N/A	N/A
Number of <u>national</u> conference papers accepted	5*	11	15
Date, Conference and Name of presentation(s)	Available upon request	Available upon request	Available upon request
Number of <u>regional</u> conference papers submitted	N/A	N/A	N/A
Number of <u>regional</u> conference papers accepted	N/A	N/A	N/A
Date, Conference and Name of presentation(s)	N/A	N/A	N/A

*Does not include papers by Florida Center for Reading Research faculty (which was part of the Learning Systems Institute in 2011-2012) or by faculty members no longer with the Learning Systems Institute

Annual Report

Does the Center or Institute produce an annual report? **Yes.** If so, please have copies available or provide the web link. **Copies are available.**

Student Publications

	2011-2012	2014-2015	2015-2016
Number of student theses credited to or associated with the C/I	N/A	N/A	N/A
Number of dissertations	N/A	1	4
Number of any other student papers	N/A	1	3

Professional Development and Assistance

Consulting

	2011-2012	2014-2015	2015-2016
Number of consulting contracts	N/A	N/A	N/A
Name of consulting recipient(s)	N/A	N/A	N/A
Consulting Subject or Topic	N/A	N/A	N/A
Amount of funding provided through general (not dedicated) funds of the C/I	N/A	N/A	N/A
Amount of funding obtained through contract in addition to general (not dedicated) C/I funds	N/A	N/A	N/A

Technical Assistance

	2011-2012	2014-2015	2015-2016
Number of technical assistance sessions or seminars offered	1	1	1
Name of technical assistance recipient(s)	International Business and Technical Consultants, Inc. (IBTCI) Sponsoring Organization(s): USAID. Bur. for Africa, Development Experience Clearinghouse, PD-ACT-624, http://pdf.usaid.gov/pdf_docs/PDACT624.pdf	United Nations Children's Fund (UNICEF-Pacific), Suva, Fiji.	Higher Education for Development (HED), American Council on Education (ACE). USAID/DEC, Washington, DC. http://pdf.usaid.gov/pdf_docs/PA00KNGF.pdf
Technical Assistance Subject or Topic	Mid-term monitoring and evaluation of Alfalit's literacy programs in Liberia, Mozambique, and Angola [140 p.] Special report.	Design of Three Year Early Grades Literacy Program for Tuvalu, Final Report.	External Evaluation of the Women's Leadership Program in Paraguay: Evaluation Report.
Amount of Funding	N/A	N/A	N/A

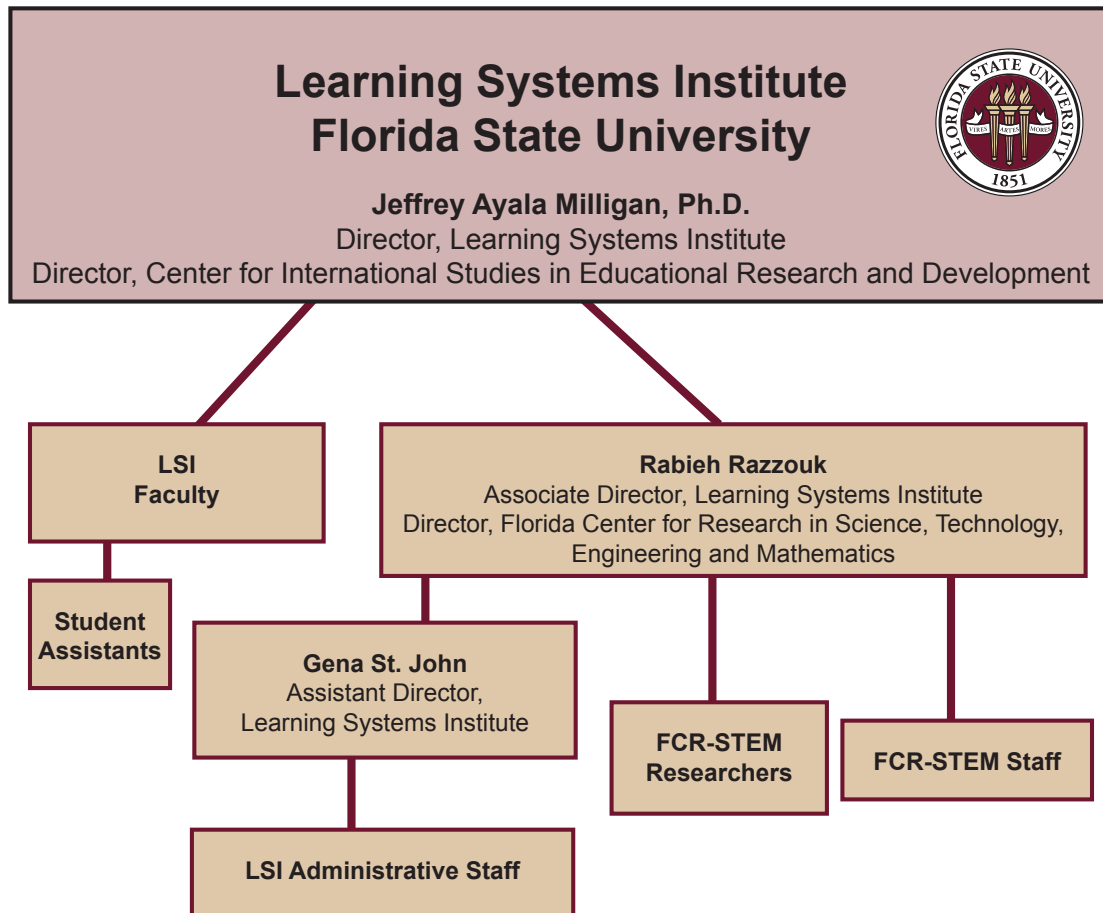
Conferences or Symposia

- How many conferences or symposia has the Center or Institute sponsored or hosted during this reporting period. Please list. **N/A**

Comments or additional information: _____

Management

- Please provide an organizational chart:



- Is the Center or Institute legislatively created? Partially.

The Learning Systems Institute has operated since 1969. Currently, it directs two centers: the Center for International Studies in Educational Research and Development (CISERD) works to improve learning and instruction in developing countries through international partners with government, universities, and non-governmental organizations; the Florida Center for Research in Science, Technology, Engineering and Mathematics (FCR–STEM) helps the State of Florida improve STEM teaching and learning in grades K-12 and prepares students for higher education and STEM careers in the 21st century. FCR-STEM is a multidisciplinary research center created by the Florida Legislature and competitively awarded to Florida State University in 2007.

- Does the Center or Institute have an advisory board? **No.** How often are meetings held? Does the board manage the C/I or does it serve in an advisory capacity? Please describe and include a list of current members.
- How long has the director served? Then-Provost Garnett S. Stokes appointed Jeffrey Ayala Milligan, Ph.D., director in 2012.
- How does the directorship change hands? The director is appointed by the Provost.
- Are there any issues associated with management transition? None.
- If there are multiple sites, how are they administered? Who has final oversight? The LSI director, LSI faculty, the Center for International Studies in Educational Research and Development, and the LSI administrative staff are in LSI's main office, in FSU's University Center. These offices are managed by LSI's director, Jeffrey Ayala Milligan.

The Florida Center for Research in Science, Technology, Engineering and Mathematics is in FSU facilities in Innovation Park, in Tallahassee. The FCR-STEM offices are managed by FCR-STEM's director, Rabieh Razzouk.

LSI's director, Jeffrey Ayala Milligan, has final oversight over all sites and facilities.

Comments or additional information: _____

Additional Issues

Issues facing the Center or Institute

Questions for Centers and Institutes (C/I) Review

Mission and C/I activities

4. Please provide contact information, both for management and for budget information.

Name of Center or Institute: **Center for Criminology and Public Policy Research**

Address:

Eppes Hall
112 S. Copeland Street
Tallahassee, Florida 32306-1273

Phone:

850-644-4050

Director:

George Pesta

Director e-mail address:

gpesta@fsu.edu

Phone:

850-645-6101

Budget and funding contact:

George Pesta

Contact e-mail address:

gpesta@comcast.net

Phone:

850-645-6101

Web Link:

<http://criminology.fsu.edu/center-for-criminology-public-policy-research/>

If multidisciplinary, please list departments associated with C/I:

N/A

5. What is the Center's or Institute's mission statement?

A branch of the College of Criminology and Criminal Justice (College), the Florida State University (FSU) Center for Criminology and Public Policy Research (Center) focuses on expanding the influence of scholarship on public policy and promoting evidence-based criminal justice policymaking and practice at the local, state, and national levels. The Center is designated as a Type II Research Center by the FSU Office of the Provost and is able to

secure and expend both public and private research funds. The Center's primary purpose is to support data collection and crime and justice policy research initiatives that promote social justice.

Specifically, the Center works to achieve the following objectives:

- Obtain and maintain external funding to support policy-relevant research,
- Conduct rigorous, policy-relevant empirical research,
- Disseminate and promote evidence-based policy and practice at the national, state, and local levels,
- Contribute to the field of criminology with theoretically relevant and methodologically rigorous research, and
- Provide opportunities for students to participate in research, publications, and policy related activities.

6. *Briefly, what activities are consistently performed that move the C/I toward meeting its established mission? This section should also include activities related to meeting the State Board of Governor's mission. The State Board of Governors mission includes the following:*

1. Strengthen Quality and Reputation of Academic Programs and Universities
2. Increase Degree Productivity and Program Efficiency
3. Increase the Number of Degrees Awarded in STEM and Other Areas of Strategic Emphasis
4. Strengthen Quality and Reputation of Scholarship, Research and Innovation
5. Increase Research and Commercialization Activity
6. Increase Collaboration and External Support for Research Activity
7. Strengthen Quality and Recognition of Commitment to Community and Business Engagement
8. Increase Levels of Community and Business Engagement
9. Increase Community and Business Workforce

Activities:

- a. Establish base of reoccurring funding to support overall development and sustainability and general budget needs of the Center.
- b. Pursue project specific funding that encourages faculty participation in funded research and fulfills the mission of the Center to conduct policy relevant research.
- c. Conduct research that is germane to the interests of the College and Center faculty and fulfills the mission of the Center to conduct policy relevant research.
- d. Establish and maintain collaborative partnerships with government agencies, professional organizations, and private industry.

- e. Facilitate the use of research to impact criminal justice policy and practice at the federal, state, and local level.
- f. Provide unique learning opportunities for post-graduate, graduate, and undergraduate students.
- g. Market the Center's services and research through both traditional and social media sources.

7. *Overall Status*

- What is the Center or Institute best known for?

Policy relevant research in the fields of corrections and juvenile justice, local program evaluations, and state agency partnerships.

- What is the greatest strength of the Center or Institute?

Leadership and support provided by the Dean; the integration of college faculty, center staff, and high quality graduate research assistants; researcher-practitioner partnerships with local and state criminal justice agencies.

- What are the most significant challenges facing the Center or Institute?

Office Space and Infrastructure: As the Center and College continue to grow, new office space and support staff will be needed. In addition, given the number of research projects that require access to large/secure datasets, the need for a secure data center for data storage, analysis, and research assistant access is anticipated.

Managing growth and fostering new areas of expertise such as elder fraud, cyber security, law enforcement, and victimization.

Funding –

Please provide the source and amount of expenditures from 2011-2012 to 2015-2016, using the following categories. Please round to the nearest dollar.

Expenditures	2011-2012	2014-2015	2015-2016
University (E&G)	0	0	0
State (General Revenue Other than E&G)	0	0	0
State (C&G or other funds)	\$64,866	\$144,756	\$206,956
Federal (C&G)	\$556,218	\$525,120	\$222,174
Local (C&G)	0	\$111,252	\$230,764
Private / nonprofit organization	0	\$16,176	\$79,816
Endowment proceeds	0	0	0
Proceeds from patents or royalties	0	0	0
Sales from services or products	0	0	0
Others (specify)	0	0	0
	0	0	0
Total expenditures	\$621,084	\$797,304	\$739,710

Endowment Information

Is the C/I supported in whole or in part by proceeds from an endowment?

If so:

No

- What is the amount of the endowment?
- Where is the endowment managed?
- Does the C/I spend only interest earnings?
- Does the C/I spend part of the capital of the endowment?
-

Contract and Grant Information

	2011-2012	2014-2015	2015-2016
Number of proposals submitted	7	12	10
Number of proposals funded	6	11	7
Proposals Made Jointly with Individuals not Directly associated with the Center / Institute			
Total dollar amount of awards	\$129,810	\$1,417,597	\$362,953

- Are any of the contracts or grants multi-year?

Yes

- FSU and Florida Department of Juvenile Justice Researcher Practitioner Partnership
- Palm Beach County School Safety and Student Performance Partnership Research Project
- Understanding Differences in the Relationship Between Prison Visitation and Recidivism
- Individual, Institutional, and Community Sources of School Violence: A Meta-Analysis
- Friendship Networks and Substance Use in Adolescence

- How many years does the Center or Institute have left on any current contract or grant?

Three

- Have any contracts or grants been renewed during this reporting period? If yes, how many?

None

Other Center or Institute Activities

- Have any patents or royalties been generated? If so, please describe.

No

- Has the Center or Institute applied for a patent that has not yet been granted? If so, please describe.

No

Comments or additional information: _____

Employment —

University Positions associated with your C/I

	2011-2012	2014-2015	2015-2016
Number of Faculty (FTE)	7	2	2
Number of A&P and USPS positions (FTE)	3	5	5
Total Positions	10	7	7

Student Employment (include graduate and undergraduate)

	2011-2012	2014-2015	2015-2016
Number of research assistants employed (FTE)	4	11	11
Number of teaching assistants employed (FTE)	0	0	0
Number of interns (with stipend or OPS)	0	0	0
Number of interns (without pay)	0	0	0
Total student positions	4	11	11

Other Student Financial Benefits (include graduate and undergraduate)

	2011-2012	2011-2012	2014-2015	2014-2015	2015-2016	2015-2016
	Number	\$ Amount	Number	\$ Amount	Number	\$ Amount
Out of state tuition waivers*	-	\$12,436.95	-	\$32,676.38		\$72,383.06
Student fellowships	-	-	-	-	-	-
Scholarships	-	-	-	-		-
Post-doctoral support	-	-	-	-	-	-
Amount of student travel support	-	-	-	\$3,341	-	\$7,494
Amount of registration for student conference attendance	-	-	-	-	-	-
Other support (specify)	-	-	-	-	-	-

Comments or additional information:

*In-state tuition waivers FY11-12 = \$12,437; FY14-15 = \$32,676; FY15-16 = \$72,383

Research and Extension —

Note: Web-delivered and CD Rom publications are to be counted in these totals.

Publications (in Refereed Journals, Peer-Reviewed Books or Peer-Reviewed Chapters)

Do not include those credited to the faculty member's primary academic department that are unrelated to the C/I mission.

	2011-2012	2014-2015	2015-2016
Number of faculty publications	13	10	9
Number of student publications	2	2	3
Number of publications authored jointly with other faculty at FSU	9	8	6
Number of publications authored jointly with students in the C/I	2	5	4
Number of publications authored jointly with faculty at locations other than FSU	3	5	2

Please have a list of relevant publications available if requested.

Other Publications and Conference Papers

	2011-2012*	2014-2015	2015-2016
Number of extension or outreach publications	-	4	2
Number of <u>national</u> conference papers submitted	-	13	14
Number of <u>national</u> conference papers accepted	-	13	14
Date, Conference and Name of presentation(s)	Nov 2014, American Society of Criminology March 2015, Society for Research on Child Development March 2015, Academy of Criminal Justice Sciences Nov 2015, American Society of Criminology April 2016, Society for Research on Child Development June 2016, Law And Society Conference		
Number of <u>regional</u> conference papers submitted	-	1	1
Number of <u>regional</u> conference papers accepted	-	1	1
Date, Conference and Name of presentation(s)	August 2015, Florida Police Chiefs Association		

	October 2016, Association of Paroling Authorities International Annual Training Conference
--	--

*Information not tracked in 2011-2012

Annual Report

Does the Center or Institute produce an annual report? If so, please have copies available or provide the web link.

Yes. <http://criminology.fsu.edu/center-for-criminology-public-policy-research/>

Student Publications

	2011-2012	2014-2015	2015-2016
Number of student theses credited to or associated with the C/I	3	0	1
Number of dissertations	3	0	4
Number of any other student papers	-	7	14

Professional Development and Assistance

Consulting

	2011-2012	2014-2015	2015-2016
Number of consulting contracts	0	0	0
Name of consulting recipient(s)	NA	NA	NA
Consulting Subject or Topic	NA	NA	NA
Amount of funding provided through general (not dedicated) funds of the C/I	0	0	0
Amount of funding obtained through contract in addition to general (not dedicated) C/I funds	0	0	0

Technical Assistance

	2011-2012	2014-2015	2015-2016
Number of technical assistance sessions or seminars offered	0	0	0
Name of technical assistance recipient(s)	NA	NA	NA
Technical Assistance Subject or Topic	NA	NA	NA
Amount of Funding	0	0	0

Conferences or Symposia

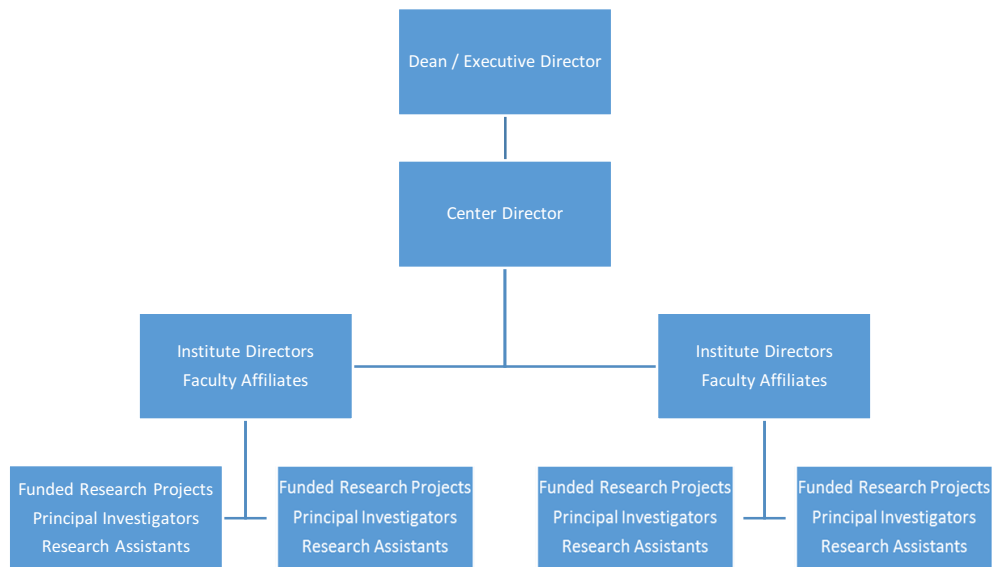
- How many conferences or symposia has the Center or Institute sponsored or hosted during this reporting period. Please list.

None

Comments or additional information: _____

Management

- Please provide an organizational chart — **See below.**



- Is the Center or Institute legislatively created?

No

- Does the Center or Institute have an advisory board? How often are meetings held?
- Does the board manage the C/I or does it serve in an advisory capacity? Please describe and include a list of current members.

No

- How long has the director served?

Since 2014

- How does the directorship change hands?

Appointed by the Dean

- Are there any issues associated with management transition?

No

- If there are multiple sites, how are they administered? Who has final oversight?

No

Comments or additional information: _____

Additional Issues

Issues facing the Center or Institute

None

Questions for Centers and Institutes (C/I) Review

Mission and C/I activities

1. Please provide contact information, both for management and for budget information.

Name of Center or Institute: **The Maggie Allesee National Center for Choreography**

Address:

Maggie Allesee National Center for
Choreography
Florida State University
School of Dance
130 Collegiate Loop, 202 MON
P.O. Box 3062120
Tallahassee, FL 32306-2120

Phone: (850) 645-2894
info@mancc.org

Director: Carla Peterson

Director E-mail address:
mancc.peterson@gmail.com
Phone: (850) 645-2450

Budget and funding contact: Anna Singleton

Contact E-mail address:
asingleton@admin.fsu.edu
Phone: (850) 644-3924

Web Link: <http://mancc.org/>

If multidisciplinary, please list departments associated with C/I:

2. What is the Center's or Institute's mission statement?

The mission of the Maggie Allesee National Center for Choreography is to raise the value of the creative process in dance by:

- 1) providing a model of support for professional choreographic creativity within a comprehensive research university;
- 2) providing choreographers access to a stimulating environment where experimentation, exploration and life-long learning are both valued and encouraged;

and

3) providing opportunities for the students, staff, and faculty, the community of Tallahassee and the national dance field at-large to engage with the creative process in dance.

3. *Briefly, what activities are consistently performed that move the C/I toward meeting its established mission? This section should also include activities related to meeting the State Board of Governor's mission. The State Board of Governors mission includes the following:*

1. Strengthen Quality and Reputation of Academic Programs and Universities
2. Increase Degree Productivity and Program Efficiency
3. Increase the Number of Degrees Awarded in STEM and Other Areas of Strategic Emphasis
4. Strengthen Quality and Reputation of Scholarship, Research and Innovation
5. Increase Research and Commercialization Activity
6. Increase Collaboration and External Support for Research Activity
7. Strengthen Quality and Recognition of Commitment to Community and Business Engagement
8. Increase Levels of Community and Business Engagement
9. Increase Community and Business Workforce

Activities:

- a. offering choreographic fellowship opportunities via creative residencies to regionally and nationally significant choreographers and their collaborators (performers, designers, dramaturgs, writers) to create new work.
- b. supporting the development of quality artistic works through residencies that tour to significant venues in the U.S. and internationally, which translate into increased visibility for Florida State University, the College of Fine Arts and School of Dance.
- c. providing opportunities for students and the Tallahassee community to engage with the creative process with acclaimed artists in residence via work in progress showings and post-showing discussions.
- d. providing networking opportunities for students to engage with among the most respected dance makers in the country via MANCC's unique Entry Points program, to include: interactive brown bag lunch discussions, informal showings, panel discussions, additions to curriculum, and opportunities to join artists in the studio in mentorship, rehearsal assistant or understudy capacities.
- e. exposing BA, BFA, MA and MFA students to the opportunities and challenges of creating, supporting, sustaining and documenting contemporary dance as a career artist by engaging with professional artists in residence at MANCC.
- f. offering faculty opportunities to include professional artists, their research and finished work into curriculum.

- g. providing opportunities to connect with professional artists that can result in post graduate employment in the dance field.

4. *Overall Status*

- *What is the Center or Institute best known for?*

MANCC is recognized as a major leader in the national field of dance and performance for its critical support of the creative process as artists develop new work within a major research university, Florida State University. MANCC is noted as a national model for providing artists in residence with access to critical resources including state of the art dance and conditioning facilities within the School of Dance, major libraries, and scholars/ scholarship in alignment with their research. In turn, faculty, students and the Tallahassee community benefit from having access to a diverse range of innovative artists working on campus. MANCC's partnership with Opening Nights Performing Arts (ONPA) over the years has resulted in a number of examples of nationally recognized artists creating new work at MANCC who then subsequently have performed the finished work as part of ONPA's season in the Nancy Smith Fichter Theater, and as part of Ringling Museum's Historic Asolo Theater.

Since its inception in 2004, MANCC has hosted over 120 regionally and nationally significant choreographers and over 600 collaborators (dancers, performers, designers, dramaturgs, writers) through its signature residency program. A multi-year artist in residence, Ralph Lemon, for example, who will be returning in 2017-2018, was awarded the 2015 National Medal of Arts by President Obama. Many others have received notable recognition as the visibility of their work has increased, often as a result of being at MANCC, including the New York Dance and Performance Award (aka BESSIES) and major funding awards.

Many of the works developed at MANCC then tour to major venues in the U.S. and internationally, including: Whitney American Museum of Art, Brooklyn Academy of Music, Danspace Project (NYC); CAP UCLA with REDCAT (L.A., CA); The Kennedy Center (DC); Institute of Contemporary Art (Boston, MA); Museum of Contemporary Art, The Dance Center at Columbia College, Chicago (IL); Walker Art Center (MN); Yerba Buena Center for the Arts (CA); Wexner Center for the Arts (OH); Miami Light Project (FL); On the Boards (WA); and others.

MANCC is also noted nationally by artists, professional artists, funders and other leaders for being a model of responsiveness to an ever-evolving field. In this timeframe, MANCC continued to provide its signature residencies to artists as it conceived, successfully fundraised for, and initiated two new pilot programs. These programs include: 1) MANCC Forward Dialogues (MFD), a laboratory for emerging artists from around the country, funded by the National Endowment for the Arts, to also include Alums and/or SOD MFA graduate students, and 2) the Artist/Writer Initiative, since 2015-2016. This initiative embeds writers in selected residencies, enabling artists and writers to re-imagine conventions of dance writing

in order to better respond to ever evolving contemporary practices, funded by The Andrew W. Mellon Foundation.

For 12 years as the only choreographic center of its kind in the U.S. located within a university, it has since served as a key model for the development of a second such center, the National Center for Choreography at University of Akron, OH.

- *What is the greatest strength of the Center or Institute?*

Our strong professional relationships that stretch from the university campus to the national field of dance are our greatest strength. Campus relationships central to our work include the College of Fine Arts and its various departments, the School of Dance, and other FSU colleges and departments with whom we intersect as a result of the research needs of the artists we bring to campus. Nationally, these relationships extend from artists to funders and to other professional leaders including executive and artistic directors of noted arts venues, due to MANCC's stellar reputation for its thoughtful support of innovative artists. MANCC staff regularly participate in regional and national convenings, including panels on contemporary issues in the field, and frequently serve as panelists and nominators for funding panels. These kinds of critical connections keep MANCC in and among the thought leaders of contemporary dance, which, in turn, feeds back to our students and faculty, particularly but not solely within the School of Dance.

- *What are the most significant challenges facing the Center or Institute?*

Our most significant challenges are from both within and without the university. Within the university, MANCC's director is hampered in her ability to pay staff adequate salaries, wages and benefits commensurate with the high quality work required in keeping MANCC nationally competitive. The Director herself has been able to increase her salary with a Specialized Faculty promotion, however, this university mechanism is not available for the other staff. Again, MANCC is a nationally recognized center but offers non-competitive salaries, which has translated into difficulty in attracting talent when a staff person leaves. An additional challenge is working within a STEM environment, where Sponsored Research is tasked with supporting fundraising from government entities but does not understand how to support arts-related entities such as MANCC.

From without, funding is always a significant challenge in the field of arts and culture. MANCC typically applies for and is awarded an NEA grant annually, which helps support several residencies each year. Our NEA grant awards during this time period were \$20,000 to \$30,000 (they have since risen to \$40,000). We are also at the end of an unprecedented three multi-year cycle of funding from The Andrew W. Mellon Foundation, which began in 2010). This Foundation typically does not fund further cycles although the Director is in conversation with their Senior Program Officer about the possibility of such continued funding, based on MANCC's unique position in the field. Without the NEA and Mellon Foundation funds, MANCC would face serious challenges in the provision of residencies. This kind of challenge would seriously impact our students and faculty due to a significant

reduction in the number of residencies, artists and collaborators that we would be able to support on campus.

Funding –

Please provide the source and amount of expenditures from 2011-2012 to 2015-2016, using the following categories. Please round to the nearest dollar.

Expenditures	2011-2012	2014-2015	2015-2016
University (E&G)	\$130,000	\$80,000	\$80,000
State (General Revenue Other than E&G)	0	0	0
State (C&G or other funds)	0	0	0
Federal (C&G)	\$20,000	\$30,000	\$30,000
Local (C&G)	0	0	0
Private / nonprofit organization	\$107,500	\$118,700	\$134,533
Endowment proceeds	\$63,578	\$76,297	\$109,917
Proceeds from patents or royalties	n/a	n/a	n/a
Sales from services or products	n/a	n/a	n/a
Others (specify)	n/a	n/a	n/a
Total expenditures	\$321,078	\$304,997	\$354,450

Endowment Information

Is the C/I supported in whole or in part by proceeds from an endowment?

If so:

- What is the amount of the endowment? 1. As of 8/10/17: \$1,895,285.03
- Where is the endowment managed? 1. The endowment is managed through the FSU Foundation
- Does the C/I spend only interest earnings? 1. Yes.
- Does the C/I spend part of the capital of the endowment? 1. No.

Contract and Grant Information

	2011-2012	2014-2015	2015-2016
Number of proposals submitted	2	2	5

Number of proposals funded	2	2	4
Proposals Made Jointly with Individuals not Directly associated with the Center / Institute	0	0	2
Total dollar amount of awards	\$127,500	\$148,700	\$167,533

- *Are any of the contracts or grants multi-year?*
 - Yes. Funding from The Andrew W. Mellon Foundation supports a multi-year, multi-residency initiative that supports mid-career artists in developing work at multiple stages, which will premiere in important presenting venues around the country. This funding addresses one of MANCC's key programmatic priorities, to support vanguard artists' work at all stages of development. By enabling artists to more fully research ideas in and out of the studio (concept, movement vocabulary, production design), MANCC residencies help more fully realize artistic visions, which translates into more fully resolved work on performance stages both in the U.S. and internationally.
- *How many years does the Center or Institute have left on any current contract or grant?*
 - MANCC has one fiscal year remaining on the multi-year, multi-residency funding from The Andrew W. Mellon Foundation.
- *Have any contracts or grants been renewed during this reporting period? If yes, how many?*
 - Yes, Four.

Other Center or Institute Activities

- *Have any patents or royalties been generated? If so, please describe.*
 - None.

- *Has the Center or Institute applied for a patent that has not yet been granted? If so, please describe.*
 - n/a

Comments or additional information: None.

Employment —

University Positions associated with your C/I

	2011-2012	2014-2015	2015-2016
Number of Faculty (FTE)	1	2	2
Number of A&P and USPS positions (FTE)	1	1	1
Total Positions	2	3	3

Student Employment (include graduate and undergraduate)

	2011-2012	2014-2015	2015-2016
Number of research assistants employed (FTE)	0	0	1
Number of teaching assistants employed (FTE)	0	0	0
Number of interns (with stipend or OPS)	0	0	0
Number of interns (without pay)	3	3	4
Total student positions	3	3	5

Other Student Financial Benefits (include graduate and undergraduate)

	2011-2012	2011-2012	2014-2015	2014-2015	2015-2016	2015-2016
	Number	\$ Amount	Number	\$ Amount	Number	\$ Amount
Out of state tuition waivers	0	n/a	0	n/a	0	n/a
Student fellowships	0	n/a	0	n/a	0	n/a
Scholarships	0	n/a	2	\$1,000	0	n/a

Post-doctoral support	0	n/a	0	n/a	0	n/a
Amount of student travel support	0	n/a	0	n/a	0	n/a
Amount of registration for student conference attendance	0	n/a	0	n/a	0	n/a
Other support (specify)	0	n/a	0	n/a	0	n/a

Comments or additional information:

Through a creation/presentation partnership with FSU's Opening Nights Performing Arts (OPNA), a MANCC residency artist Emily Johnson was included on the ONPA season in 2013. Shared fundraising by the artist and MANCC helped offset presenting costs for ONPA. In exchange, MANCC received ticket sales proceeds. These proceeds have been subsequently used to award a number of \$500 scholarships to School of Dance students. Recent examples: 1) Shamar Watt (BFA, 2016), was awarded \$500 in 2015 to support travel costs to Senegal to perform with MANCC residency artist, Nora Chipaumire in a work developed at MANCC in January/February 2015, which has subsequently been nominated for a New York Dance and Performance Award (aka Bessies), and 2) Heather Boni (MFA, 2016), was awarded \$500 to support travel costs to San Francisco in summer 2015 to work with AXIS Dance Company, the nation's premiere physically integrated dance company, in line with her graduate research interests on physically integrated dance. AXIS Dance Company was in residence at MANCC in fall 2014.

Research and Extension —

Note: Web-delivered and CD Rom publications are to be counted in these totals.

Publications (in Refereed Journals, Peer-Reviewed Books or Peer-Reviewed Chapters)

Do not include those credited to the faculty member's primary academic department that are unrelated to the C/I mission.

	2011-2012	2014-2015	2015-2016
Number of faculty	n/a	n/a	n/a
Number of student	n/a	n/a	n/a

Number of publications authored jointly	n/a	n/a	n/a
Number of publications authored jointly	n/a	n/a	n/a
Number of authored jointly with faculty at locations other than FSU	Active website with individual Artist Page for each Artist in Residence that includes Artis biography, Artist project description, names of collaborators in residence, and video and photo documentation of the creative research residency at MANCC. mancc.org	Active website with individual Artist Page for each Artist in Residence that includes Artis biography, Artist project description, names of collaborators in residence, and video and photo documentation of the creative research residency at MANCC. mancc.org	Active website with individual Artist Page for each Artist in Residence that includes Artis biography, Artist project description, names of collaborators in residence, and video and photo documentation of the creative research residency at MANCC. mancc.org

Please have a list of relevant publications available if requested.

Other Publications and Conference Papers

	2011-2012	2014-2015	2015-2016
Number of extension or outreach publications	n/a	n/a	n/a
Number of <u>national</u> conference papers submitted	n/a	n/a	n/a
Number of <u>national</u> conference papers accepted	n/a	n/a	n/a

Date, Conference and Name of presentation(s)	n/a	Tuesday, October 13, 2015 - Friday, October 16, 2015, Alliance of Artist Communities,	October 4, 2016 - Friday, October 7, 2016, Alliance of Artist Communities, Untapped
		Artist: Supporting Performance Through	Resources: Partnering with Universities
Number of <u>regional</u> conference papers submitted	n/a	n/a	n/a
Number of <u>regional</u> conference papers accepted	n/a	n/a	n/a
Date, Conference and Name of presentation(s)	n/a	n/a	n/a

Annual Report

Does the Center or Institute produce an annual report? If so, please have copies available or provide the web link.

The Maggie Allesee National Center for Choreography does not produce an annual report.

Student Publications - N/A

	2011-2012	2014-2015	2015-2016
Number of student theses credited to or associated with the C/I			
Number of dissertations			
Number of any other student papers			

Professional Development and Assistance Consulting - N/A

	2011-2012	2014-2015	2015-2016
Number of consulting contracts			
Name of consulting recipient(s)			
Consulting Subject or Topic			
Amount of funding provided through general (not dedicated) funds of the C/I			

Amount of funding obtained through contract in addition to general (not dedicated) C/I funds			
--	--	--	--

Technical Assistance - N/A

	2011-2012	2014-2015	2015-2016
Number of technical assistance sessions or seminars offered			
Name of technical assistance recipient(s)			
Technical Assistance Subject or Topic			
Amount of Funding			

Conferences or Symposia

- *How many conferences or symposia has the Center or Institute sponsored or hosted during this reporting period. Please list.*
 - MANCC has not sponsored or hosted a conference or symposia during this reporting period.

Comments or additional information: As background, the Center hosted a major, and first of its kind, national convening, the National FORUM on Choreographic Research and Development, in 2009, with major funding support from the National Endowment for the Arts (\$20,000) and The Andrew W. Mellon Foundation (\$50,00). This National FORUM brought 75 professional artists, key funders and leading professionals in the field together to research methodologies best employed to support the creative process in the field of dance. As the first of its kind, a Choreographic Center located in a research university in the U.S., MANCC has served as a leader in the field through this Forum and its findings, and its annual work in hosting artist residencies on campus. In short, MANCC has continue to model best practices around creative support. One direct result of this national convening was that The Andrew W. Mellon began its multi-year support of MANCC with a pilot 2 year grant (\$200,000, 2010/11 - 2011/12), a three-year grant (\$300,000, 2012/13, 2013/14, 2014/15) and the current three-year grant (\$325,000, 2015/16, 2016/17, 2017/18). The Center is exploring the feasibility and timeliness of a national follow-up convening to this 2009 National FORUM on Choreographic Research and Development, which would provide an important field-wide check-in/reflection around creative support in dance and how the field needs to best move forward.

Management

- *Please provide an organizational chart*
 - Director (reports to School of Dance chair)
 - Student Assistant to Director
 - Managing Director
 - Research Associate
 - Media Specialist
 - Residency Coordinator
 - Student Interns
- *Is the Center or Institute legislatively created?*
 - No.
- *Does the Center or Institute have an advisory board?* Yes, called a Resource Council
 - *How often are meetings held?* Twice a year by phone
 - *Does the board manage the C/I or does it serve in an advisory capacity?*
Resource Council serves in an advisory capacity.
 - *Please describe and include a list of current members.*
 - MANCC Resource Council:
 - Joséphine A. Garibaldi, Associate Professor and Chair, School of Dance, Florida State University
 - Jen Atkins (Ph.D.), Associate Professor, School of Dance, Florida State University
 - Tere O'Connor, Choreographer, Center for Advanced Studies Professor of Dance, University of Illinois, Urbana-Champaign
 - Anna Glass, Executive Director, Dance Theatre of Harlem, NYC
 - Judy Smith, Founder and Director, AXIS Dance Company (CA)
 - Jennifer Calienes, MANCC Founding Director (MA)
- *How long has the director served?*
 - Since May 2014
- *How does the directorship change hands?*
 - Through national search implemented by the FSU School of Dance and College of Fine Arts
- *Are there any issues associated with management transition?*
 - No.
- *If there are multiple sites, how are they administered? Who has final oversight?*
 - Single site at Florida State University

Comments or additional information: None.

Additional Issues

Issues facing the Center or Institute:

Please see Question 4, “What are the most significant challenges facing the Center or Institute?”

Questions for Centers and Institutes (C/I) Review

Mission and C/I activities

- 1. Please provide contact information, both for management and for budget information.***

Name of Center or Institute: **Institute of Molecular Biophysics**

Address: Kasha Laboratory Building, FSU

Phone: 850-645-1337

Director: Peter Fajer

Director e-mail address: pfajer@fsu.edu

Phone: 850-645-1337

Budget and funding contact: Regina Ware

Contact e-mail address: rware@fsu.edu

Phone: 850-644-4474

Web Link: <http://biophysics.fsu.edu/>

If multidisciplinary, please list departments associated with C/I:

Chemistry and Biochemistry

Biology

Physics

Mathematics

- 2. What is the Center's or Institute's mission statement?***

The Institute of Molecular Biophysics (IMB) is a multidisciplinary institute with the primary unifying theme the use of biophysical and biochemical tools to probe living processes. IMB is the home of the Molecular Biophysics (MOB) graduate program which trains Ph.D. students under the supervision of faculty from six FSU departments. A subset of IMB faculty constitute the Structural Biology Program, a research group that studies the structure and function of large molecules and molecular assemblies.

- 3. Briefly, what activities are consistently performed that move the C/I toward meeting its established mission? This section should also include activities related to meeting the State Board of Governor's mission. The State Board of Governors mission includes the following:***

1. Strengthen Quality and Reputation of Academic Programs and Universities
2. Increase Degree Productivity and Program Efficiency
3. Increase the Number of Degrees Awarded in STEM and Other Areas of Strategic Emphasis
4. Strengthen Quality and Reputation of Scholarship, Research and Innovation
5. Increase Research and Commercialization Activity
6. Increase Collaboration and External Support for Research Activity
7. Strengthen Quality and Recognition of Commitment to Community and Business Engagement
8. Increase Levels of Community and Business Engagement
9. Increase Community and Business Workforce

Activities:

- a. To maintain and increase our visibility we are organizing every couple of years a Structural Biology Conference in Tallahassee. The last one, 90 Years of Structural Biology attracted 15 members of National Academy and 4 Fellows of Royal Society.
- b. As a graduate program we are mainly interested in the quality of our program. Expanding the program is less of a priority since 90% of support for our students is coming from the federal grants the expansion is limited by those funds. Having said this, we are making recruiting efforts by going to national and regional conferences, many of our travels abroad to conferences are extended by couple of days to meet with the undergraduate and Master students in that country to persuade them to come to FSU. Although the number is small ~ 20, the quality is excellent, we have 5 recipients of NIH, NSF, AHA fellowships, we have Goldwater Scholar in our graduate programs.
- c. To increase their preparation and visibility we fund our graduate students travel to National conferences from the first year when they do not have data to present. We have developed an intensive workshop “Bootcamp” at the very beginning of their graduate careers that is introducing students from different academic backgrounds (there are no undergraduate Biophysics degrees in the US) to research in Biophysics.

4. Overall Status

- What is the Center or Institute best known for?

The Institute is known for excellence in Structural Biology, determination of large protein complexes and correlation of structure with their function. We want to know how proteins work.

- What is the greatest strength of the Center or Institute?

We have two areas of strength. First, our research is highly valued as judged by our publication and grant award records. More recently we are focusing on the development of cryo Electron Microscopy. With federal grants we have procured the state-of-the art Titan microscope (at the time of installation it was the only one in the US), we have obtained NIH funding as a regional facility and are applying for larger facility grants to expand to be a National Facility.

The second strength is our students. Alumni are very successful going to top institutions for postdoctoral training and continuing in both academia as independent faculty, and industry. Every external and internal review compliments us on the quality of our students.

- What are the most significant challenges facing the Center or Institute?

The main challenge is the reinvention of the institute. The Structural Biology Program, founded in 1990, is in its 27th year nearing the lifetime of scientific programs. From the original 10 faculty, only 3 are left and all are either administrators or are over 70 years old. Despite this the Institute is vibrant place, very well funded (well above the average at FSU) and productive. This is mainly done with faculty who are employed by the University independent of the Institute but who we persuade to join afterwards.

Building on our strength in cryo electron microscopy (we have three cryoEM faculty with two more using the method at least 40% of time) we have formulated a vision to expand our expertise and resources to the cellular level. For most part cryoEM is done with isolated protein but we want move the field into a cell. Rather than observing proteins one at a time after careful isolation and purification we would like to observe them in the native environment—a cell. This vision got enthusiastic support from an external reviewer, Prof. Harry Dailey, and enjoys support of our Dean who is looking into a long-term hiring initiative in the field of cryoEM.

Funding –

Please provide the source and amount of expenditures from 2011-2012 to 2015-2016, using the following categories. Please round to the nearest dollar.

Expenditures	2011-2012	2014-2015	2015-2016
University (E&G)	\$1,132,962	\$957,124	\$1,160,973
State (General Revenue Other than E&G)			
State (C&G or other funds)			
Federal (C&G)	\$1,951,935	\$2,610,905	\$1,822,609
Local (C&G)			
Private / nonprofit organization	\$313,207	\$13,423	\$13,000

Endowment proceeds			
Proceeds from patents or royalties			
Sales from services or products	\$20,279	\$5,518	\$5,000
Others (specify)			
Total expenditures	\$3,418,383	\$3,586,970	\$3,001,582

Endowment Information

Is the C/I supported in whole or in part by proceeds from an endowment?

If so:

- What is the amount of the endowment?
- Where is the endowment managed?
- Does the C/I spend only interest earnings?
- Does the C/I spend part of the capital of the endowment?

Contract and Grant Information

	2011-2012	2014-2015	2015-2016
Number of proposals submitted	7	24	20
Number of proposals funded	7	10	8
Proposals Made Jointly with Individuals not Directly associated with the Center / Institute	43	25	22
Total dollar amount of awards	\$2,157,910	\$1,938,074	\$1,822,609

- Are any of the contracts or grants multi-year?
 - FY12 – 12 multi-year
 - FY15 – 14 multi-year
 - FY16 – 14 multi-year
- How many years does the Center or Institute have left on any current contract or grant?
- All grants in Biochemistry/Biophysics are 3-5 years grants. Taking 4 years as average length of the grant ¼ of grants will be expiring in any given year.
 - FY15 – 2 end in FY18
 - FY16 – 4 end in FY18; 3 end in FY19

- Have any contracts or grants been renewed during this reporting period? If yes, how many?

All of the grants are the renewals except for the grants of new faculty, in this survey cycle it would be one grant which was a new award.

Other Center or Institute Activities

- Have any patents or royalties been generated? If so, please describe.
- Has the Center or Institute applied for a patent that has not yet been granted? If so, please describe.

Yang, W., and Zheng, L. Q. (submitted). Methods and apparatus for double-integration orthogonal space tempering. US 20140222398 A1, computational method for drug discovery.

Comments or additional information: _____

Employment —

University Positions associated with your C/I

	2011-2012	2014-2015	2015-2016
Number of Faculty (FTE)	4	5	5
Number of A&P and USPS positions	8.5	7.5	5
Total Positions	12.5	12.5	10

Student Employment (include graduate and undergraduate)

	2011-2012	2014-2015	2015-2016
Number of research assistants ONLY employed (FTE)	20	19	14
Number of teaching assistants ONLY employed (FTE)	3	0	0
Number of assistants being both research and teaching employed (FTE)	4	5	3
Number of students not appointed because of external fellowships	1	0	2
Number of interns (with stipend or OPS)	N/A	N/A	N/A
Number of interns (without pay)	N/A	N/A	N/A
Total student positions	28	24	19

Other Student Financial Benefits (include graduate and undergraduate)

	2011-2012	2011-2012	2014-2015	2014-2015	2015-2016	2015-2016
	Number	\$ Amount	Number	\$ Amount	Number	\$ Amount
Out of state tuition waivers	Fall-15 Spring-14 Summer-15	76971.52 75768.84 76971.52	Fall-10 Spring-8 Summer-6	54000.74 43296.48 32472.36	Fall-6 Spring-6 Summer-6	32472.36 32472.36 32472.36
Student fellowships	2 (AHA, Fulbright)	61054	0	-	4 (AHA, NSF GRFP, NIH)	136297
Scholarships	1 (Legacy fellowship)	10000	3 (Wilson-Auzenne fellowship, Legacy fellowship)	25000	3 (Wilson-Auzenne fellowship, Legacy fellowship)	25000
Post-doctoral support	N/A	-	N/A	-	N/A	-
Amount of student travel support	28	25200	24	21400	19	14200
Amount of registration for	N/A	-	N/A	-	N/A	-
Other support (Health Benefits Subsidy)	19	6567.04	19	6980.00	16	4574.00

Comments or additional information: _____

Research and Extension —

Note: Web-delivered and CD Rom publications are to be counted in these totals.

Publications (in Refereed Journals, Peer-Reviewed Books or Peer-Reviewed Chapters)

Do not include those credited to the faculty member's primary academic department that are unrelated to the C/I mission.

	2011	2012	2014	2015	2016
Number of faculty publications	58	61	47	42	47
Number of student publications	49	55	35	39	38

Number of publications authored jointly with other faculty at FSU	20	29	26	19	23
Number of publications authored jointly with students in the C/I	21	29	20	23	21
Number of publications authored jointly with faculty at locations other than FSU	16	23	21	20	23

Please have a list of relevant publications available if requested.

Other Publications and Conference Papers

	2011*	2012*	2014*	2015*	2016*
Number of extension or outreach publications	-		-		-
Number of <u>national</u> conference papers submitted	29	34	22	15	28
Number of <u>national</u> conference papers accepted	29	34	22	15	27
Date, Conference and Name of presentation(s)	-		-		-
Number of <u>regional</u> conference papers submitted	6	7	6	3	11
Number of <u>regional</u> conference papers accepted	6	7	6	3	11
Date, Conference and Name of presentation(s)	-		-		-

** For this report, we have used the exact year of publication instead of the Fiscal year to tabulate publications. Publications are reported in the calendar year they are published.*

Annual Report

Does the Center or Institute produce an annual report? If so, please have copies available or provide the web link.

Student Publications

	2011-2012	2014-2015	2015-2016
Number of student theses credited to or associated with the C/I	4	7	7
Number of dissertations	3	5	3
Number of any other student papers	55	26	21

Professional Development and Assistance

Consulting

	2011-2012	2014-2015	2015-2016
Number of consulting contracts			
Name of consulting recipient(s)			
Consulting Subject or Topic			
Amount of funding provided through general (not dedicated) funds of the C/I			
Amount of funding obtained through contract in addition to general (not dedicated) C/I funds			

We do not have any consulting activities.

Technical Assistance

	2011-2012	2014-2015	2015-2016
Number of technical assistance sessions or seminars offered			
Name of technical assistance recipient(s)			

Technical Assistance Subject or Topic			
Amount of Funding			

We do not perform any technical assistance outside of normal collaborations.

Conferences or Symposia

- How many conferences or symposia has the Center or Institute sponsored or hosted during this reporting period. Please list.
1. Frontiers in Macromolecular Imaging, December 1-3, 2011
 2. Southeast Regional Collaborative Access Team (SER-CAT) symposium, March 2013
 3. 90th Anniversary of Structural Biology -Jan. 2017

Comments or additional information: _____

Management

- Please provide an organizational chart
- Is the Center or Institute legislatively created?
Yes, Structural Biology was created by Florida legislature in 1989-1990.
- Does the Center or Institute have an advisory board? How often are meetings held?
We do not have board but we have regular outside reviews. In the last period we had one mandated QER review, 2017, in addition in 2013 we had an ad hoc external advisory board reviewing us. The latter board consisted of 3 outside faculty, two of whom were past Presidents of American Biophysical Society.
- Does the board manage the C/I or does it serve in an advisory capacity? Please describe and include a list of current members.
External reviewers in 2013 were Yale Goldman (U. Pennsylvania), Steve Harvey (Georgia Tech) and Lee Makowski (Northeastern U.). External reviewer in 2017 was Harry Dailey (U. Georgia).
- How long has the director served?
The Director has been elected to a 5-year term in 2011, and re-elected to the second term in 2016.

- How does the directorship change hands?
Every 5 years we hold a faculty and staff elections to recommend the new Director to the Dean.
- Are there any issues associated with management transition?
The 2011 elections were the first. The transition was smooth.
- If there are multiple sites, how are they administered? Who has final oversight?

Comments or additional information: _____

Additional Issues

Issues facing the Center or Institute

1 Faculty attrition

We are getting old, currently out of 9 faculty in the Institute, three are either administrators or over 70 (i.e., not exactly at the peak of their research activities). Our younger faculty is continually being recruited away by other Universities. In the last three years half of them (3) were offered places elsewhere, we retained two but might not be so lucky with the third one. From the original 10 faculty, 7 have retired or left but only one has been replaced. We have persuaded 5 of our faculty who were hired by the University independent of the Institute to join us, but this is opportunistic. It guaranteed us a survival as an Institute but it is not the way to build coherent center with a common scientific vision. We want to expand into area of high resolution imaging—cryo electron microscopy. We hope that the new efforts of the Dean of Arts and Sciences will result in the much needed new-blood influx of faculty in the Institute.

2 Administrative and technical staff attrition

Likewise, on the administrative and technical support site we see a dramatic decrease of number of staff positions. In the last two years, we have lost 3 administrative staff (including OPS) and 1 technical support person since the last survey.

3 Graduate student attrition

The graduate program is experiencing the same woes. Our numbers decreased from 30-35 in the previous period to ~20. This decrease is mainly attributed to the level of the institutional support that stays numerically constant since 1990. The funds for the first year support (in subsequent years students are supported by research grants) afforded 10 new students every year, the two-fold increase of stipend levels in the last 30 years stretches the same dollars for support of 5 new students.

Questions for Centers and Institutes (C/I) Review

Mission and C/I activities

1. Please provide contact information, both for management and for budget information.

Name of Center or Institute: **Center for Retail, Merchandising and Product Development**

Address: 120 Convocation Way, Tallahassee, FL 32306-1494

Phone: 850-644-3236

Director: Ms. Ann Langston,
Director e-mail address: alangston@fsu.edu,
Phone: 850-644-3236,

Budget and funding contact: Barbara Koehler
Contact e-mail address: bkoehler@fsu.edu
Phone: 850-644-4236

Web Link: <http://retailcenter.fsu.acsitefactory.com/>

If multidisciplinary, please list departments associated with C/I:

- Retail, Merchandising and Product Development
- Marketing

2. What is the Center's or Institute's mission statement?

The Center will serve as a multidisciplinary center, providing educational programming and research in retail management, merchandising, and fashion design to students, faculty, and industry partners as a means to develop strong future leaders and bridge the academic and business communities.

3. Briefly, what activities are consistently performed that move the C/I toward meeting its established mission? This section should also include activities related to meeting the State Board of Governor's mission. The State Board of Governors mission includes the following:

4. Strengthen Quality and Reputation of Academic Programs and Universities
5. Increase Degree Productivity and Program Efficiency
6. Increase the Number of Degrees Awarded in STEM and Other Areas of Strategic Emphasis
7. Strengthen Quality and Reputation of Scholarship, Research and Innovation
8. Increase Research and Commercialization Activity
9. Increase Collaboration and External Support for Research Activity

10. Strengthen Quality and Recognition of Commitment to Community and Business Engagement
11. Increase Levels of Community and Business Engagement
12. Increase Community and Business Workforce

Activities:

- a. **The Retail Summit** (held each Spring Semester): The Summit encompasses an intense and informative half day conference which educates the students on career opportunities and the ever-changing trends in their chosen retail fields and includes a “speed networking” lunch. Past speakers have included: David Wolf, Creative Director for The Doneger Group; Jeff Rosenthal, President and CEO of Hibbett Sports; Vickie Kunkel, Sr. Director of Retail at Hard Rock; Jim Greene, Manager for Merchandise Planning for Disney and Paco Underhill, the expert on global consumer trends. The Summit is attended by 250-300 students and over 20 companies.
- b. **The Scholarship Dinner** (held each Fall Semester): The dinner is an annual event that is attended by representatives from over 20 companies sponsoring over \$30,000 in scholarships and giving approximately 200 juniors and seniors an opportunity to practice their business proficiency and networking skills with company representatives.
- c. **The Retail Focus Panel** (held each Fall and Spring Semester): The Retail Focus Panel features a panel of mostly Florida State graduates who are currently working for companies that showcase the diversity and broad spectrum of the retail industry. During the event, students hear from the panelists about their careers in the retail industry, and at the end, the students have an opportunity to ask questions of the panel members.
- d. **The Retail Roundtable** (held each Summer): The purpose of the roundtable is to have an open dialogue on FSU’s role in educating future retailers and merchandisers to succeed in internships and career opportunities that the local entrepreneurial retailers offer. We look forward to supporting these businesses through the Center in such ways as visibility and interaction with our students, to provide them with interns and entry level managers, at the same time receiving their support that helps us insure the continued quality of students.
- e. **The NYC Marketing trip** (held Fall and Spring Semester): The purpose of the NYC marketing/retail trip is multifaceted. First, the trip aims to expose students to the variety of retail opportunities that exist in New York. Second, as the Center grows and more trips are undertaken, the presence of FSU graduates in retail-based careers will increase, thus simplifying the planning and organizing of future trips. Finally, the trip builds rapport with our current and future partners.

4. Overall Status

- What is the Center or Institute best known for?
 - Creating an environment where students receive information about, and unparalleled access to, internship and career opportunities in the retail industry
 - Creating an environment where students are developed to be top-choice employees for current and future retail partners
 - Act as an informational clearing house for students looking for careers in retail as well as retailers looking for industry insights and continued education
- What is the greatest strength of the Center or Institute?
 - Offering relevant, innovative and engaging retail-based events
 - Developing students who add true value to the retail industry
- What are the most significant challenges facing the Center or Institute?
 - Recruiting new members and maintaining current members

Funding –

Please provide the source and amount of expenditures from 2011-2012 to 2015-2016, using the following categories. Please round to the nearest dollar.

Expenditures	2011-2012	2014-2015	2015-2016
University (E&G)	0	0	0
State (General Revenue Other than E&G)	0	0	0
State (C&G or other funds)	0	0	0
Federal (C&G)	0	0	0
Local (C&G)	0	0	0
Private / nonprofit organization	\$74,770	\$93,018	\$97,848
Endowment proceeds	\$57,349	\$91,645	\$87,869
Proceeds from patents or royalties	0	0	0
Sales from services or products	0	0	0
Others (specify)	0	0	0
Total expenditures	\$132,119	\$184,663	\$185,717

Endowment Information

Is the C/I supported in whole or in part by proceeds from an endowment? Yes

If so:

- What is the amount of the endowment? \$2,376,196 (3/31/17)
- Where is the endowment managed? FSU Foundation
- Does the C/I spend only interest earnings? Yes
- Does the C/I spend part of the capital of the endowment? No

Contract and Grant Information

	2011-2012	2014-2015	2015-2016
Number of proposals submitted	1	1	0
Number of proposals funded	1	1	0
Proposals Made Jointly with Individuals not Directly associated with the Center / Institute	0	0	0
Total dollar amount of awards	\$7,900	\$3,000	

- Are any of the contracts or grants multi-year? No
- How many years does the Center or Institute have left on any current contract or grant? None
- Have any contracts or grants been renewed during this reporting period? If yes, how many? No

Other Center or Institute Activities

- Have any patents or royalties been generated? No
- If so, please describe.
- Has the Center or Institute applied for a patent that has not yet been granted? If so, please describe. No

Comments or additional information: _____

Employment —

University Positions associated with your C/I

	2011-2012	2014-2015	2015-2016
Number of Faculty (FTE)	.7	1	.8
Number of A&P and USPS positions (FTE)	0	0	0
Total Positions	.7	1	.8

Student Employment (include graduate and undergraduate)

	2011-2012	2014-2015	2015-2016
Number of research assistants employed (FTE)	0	0	0
Number of teaching assistants employed (FTE)	0	0	0
Number of interns (with stipend or OPS)	1	1	0
Number of interns (without pay)	1	1	2
Total student positions	2	2	2

Other Student Financial Benefits (include graduate and undergraduate)

	2011-2012	2011-2012	2014-2015	2014-2015	2015-2016	2015-2016
	Number	\$ Amount	Number	\$ Amount	Number	\$ Amount
Out of state tuition waivers	0	\$0	0	\$0	0	\$0
Student fellowships	0	\$0	0	\$0	0	\$0
Scholarships	2	\$12,000	3	\$16,000	6	\$22,500
Post-doctoral support	0	\$0	0	\$0	0	\$0
Amount of student travel support	1	\$132	0	\$529	5	\$1,171
Amount of registration for student conference attendance	0	\$0	0	\$0	0	\$
Other support (intern stipend)	1	\$900	1	\$3,096	0	\$0

Comments or additional information: _____

Research and Extension —

Note: Web-delivered and CD Rom publications are to be counted in these totals.

Publications (in Refereed Journals, Peer-Reviewed Books or Peer-Reviewed Chapters)

Do not include those credited to the faculty member's primary academic department that are unrelated to the C/I mission.

	2011-2012	2014-2015	2015-2016
Number of faculty publications	0	0	0
Number of student publications	0	0	0
Number of publications authored jointly with other faculty at FSU	0	0	0

Number of publications authored jointly with students in the C/I	0	0	0
Number of publications authored jointly with faculty at locations other than FSU	0	0	0

Please have a list of relevant publications available if requested.

Other Publications and Conference Papers

	2011-2012	2014-2015	2015-2016
Number of extension or outreach publications	0	0	0
Number of <u>national</u> conference papers submitted	0	0	0
Number of <u>national</u> conference papers accepted	0	0	0
Date, Conference and Name of presentation(s)			
Number of <u>regional</u> conference papers submitted	0	0	0
Number of <u>regional</u> conference papers accepted	0	0	0
Date, Conference and Name of presentation(s)			

Annual Report

Does the Center or Institute produce an annual report? If so, please have copies available or provide the web link.

No annual report produced

Student Publications

	2011-2012	2014-2015	2015-2016
Number of student theses credited to or associated with the C/I	0	0	0
Number of dissertations	0	0	0
Number of any other student papers	0	0	0

Professional Development and Assistance**Consulting**

	2011-2012	2014-2015	2015-2016
Number of consulting contracts	0	0	0
Name of consulting recipient(s)			
Consulting Subject or Topic			
Amount of funding provided through general (not dedicated) funds of the C/I	0	0	0
Amount of funding obtained through contract in addition to general (not dedicated) C/I funds	0	0	0

Technical Assistance

	2011-2012	2014-2015	2015-2016
Number of technical assistance sessions or seminars offered	0	0	0
Name of technical assistance recipient(s)			
Technical Assistance Subject or Topic			
Amount of Funding			

Conferences or Symposia

- How many conferences or symposia has the Center or Institute sponsored or hosted during this reporting period. Please list.
 - The Retail Summit 2011-2017

Comments or additional information: _____

Management

- Please provide an organizational chart
 - Co-Directors: Ann Langston reports to:
 - Department Chair in RMPD who reports to:
 - Dean in the College of Human Sciences
- Is the Center or Institute legislatively created?
 - No
- Does the Center or Institute have an advisory board? How often are meetings held?
 - No, but joint center will be creating one in 2018
- Does the board manage the C/I or does it serve in an advisory capacity? Please describe and include a list of current members.
 - N/A
- How long has the director served?
 - Director Ann Langston: 2011-2017
- How does the directorship change hands?
 - The current director is the one director this center has had.

- Are there any issues associated with management transition?
 - No
- If there are multiple sites, how are they administered? Who has final oversight?
 - No multiple sites

Comments or additional information: _____

Additional Issues

Issues facing the Center or Institute

Questions for Centers and Institutes (C/I) Review

Mission and C/I activities

1. Please provide contact information, both for management and for budget information.

Name of Center or Institute: **Center for Advancing Exercise and Nutrition Research on Aging**

Address: Nutrition, Food and Exercise Sciences
426 Sandels Building
Tallahassee, FL 32304-1493

Phone: 850-644-1517

Director: Bahram H. Arjmandi
Director e-mail address: barjmandi@fsu.edu
Phone: 850-644-1517

Budget and funding contact: Barbara Koehler
Contact e-mail address: bkoehler@fsu.edu
Phone: 850-644-4236

Web Link: <http://www.chs.fsu.edu/caenra>

If multidisciplinary, please list departments associated with C/I:

2. What is the Center's or Institute's mission statement?

To develop translational research across disciplines and levels of biological organization through nutrition and exercise to improve the health of our aging population. The Center focuses on analyzing the functional decline in aging bone, brain and muscle cells using magnetic resonance (MR) imaging with the intent to improve the quality of life for aging individuals.

3. Briefly, what activities are consistently performed that move the C/I toward meeting its established mission? This section should also include activities related to meeting the State Board of Governor's mission. The State Board of Governors mission includes the following:

1. Strengthen Quality and Reputation of Academic Programs and Universities
2. Increase Degree Productivity and Program Efficiency
3. Increase the Number of Degrees Awarded in STEM and Other Areas of Strategic Emphasis

4. Strengthen Quality and Reputation of Scholarship, Research and Innovation
5. Increase Research and Commercialization Activity
6. Increase Collaboration and External Support for Research Activity
7. Strengthen Quality and Recognition of Commitment to Community and Business Engagement
8. Increase Levels of Community and Business Engagement
9. Increase Community and Business Workforce

Activities:

- a. Participating in Senior Day for the City of Tallahassee to promote healthy aging.
- b. Participated in speaking in classes for the Osher Lifelong Learning Institute at FSU.
- c. Developing an online course entitled “Functional Foods and Human Health, HUN 4362”.
- d. Chair for ASN RIS Aging and Chronic Disease
- e. Conference organizer
- f. Organizer of the presentation as a major symposium: *Interrelationships between Bone, Muscle, and Fat*. Presentation at Nutritional Approaches for Osteosarcopenic Obesity, the Aging and Chronic Disease RIS, American Society of Nutrition, Experimental Biology, American Society of Nutrition, Experimental Biology, Boston, MA. (National)
- g. As Center Director, has given major speeches, TV, and radio interviews locally, nationally, and internationally. Examples are:
 - (a) Invited Speaker: *Cardioprotective Effects of Berries and the Probable Mechanism of Action*. The 7th Biennial Berry Health benefits Symposium: The National Berry Crops Initiative, Pismo Beach, CA
 - (b) Invited Speaker: *Medicinal Foods and Human Health*. The 2nd International and 14th Iranian Nutrition Congress Organizer: School of Nutritional Sciences and Dietetics, Iranian Nutrition Society, Tehran, Iran.
 - (c) Invited Speaker: *New Research on Micronutrients*. Lecture Series Sponsored by the California Dried Plum Board **1**: International Osteoporosis Foundation meeting, Athens, Italy, UK and Greece; **2**: Media tour, Warsaw, Poland.
 - (d) Session Chair: *Nutritional Approaches for Osteosarcopenic Obesity: Interrelationships between Bone, Muscle, and Fat*. Symposia sponsored by the Aging and Chronic Disease RIS, American Society of Nutrition, Experimental Biology, Boston, MA.

Overall Status

- What is the Center or Institute best known for?
Aging and exercise related research, specifically the beneficial effects of prune supplementation on osteoporosis.
- What is the greatest strength of the Center or Institute?
Having a nationally and internationally known expert team in terms of age related disorders, including the Dean of the college who is internationally known on his work in the effects of aging and exercise training on vascular control mechanisms in skeletal muscle, and the effects of actual and simulated microgravity on microvascular control mechanisms in the brain, splanchnic tissue and skeletal muscle, and how these alterations contribute to health risks associated with spaceflight.
- What are the most significant challenges facing the Center or Institute?
Fundraising, crowdfunding, and having a specific physical location dedicated to the center and it's clinical and basic research studies.

Funding –

Please provide the source and amount of expenditures from 2011-2012 to 2015-2016, using the following categories. Please round to the nearest dollar.

Expenditures	2011-2012	2014-2015	2015-2016
University (E&G)	\$1,598	\$1,522	\$16,010
State (General Revenue Other than E&G)	0	0	0
State (C&G or other funds)	0	0	0
Federal (C&G)	\$34	\$24,080	\$43,376
Local (C&G)	0	0	0
Private / nonprofit organization	\$191,632	\$107,746	\$76,798
Endowment proceeds	\$10,820	\$11,822	\$12,122
Proceeds from patents or royalties	0	0	0
Sales from services or products	0	0	0
Others (CRC)	0	\$1,423	\$2,658
Total expenditures	\$204,084	\$146,593	\$150,964

Endowment Information

Is the C/I supported in whole or in part by proceeds from an endowment? Yes

If so:

- What is the amount of the endowment? \$302.074 (3/31/17)
- Where is the endowment managed? FSU Foundation
- Does the C/I spend only interest earnings? Yes
- Does the C/I spend part of the capital of the endowment? No

Contract and Grant Information

	2011-2012	2014-2015	2015-2016
Number of proposals submitted	4	9	4
Number of proposals funded	3	5	1
Proposals Made Jointly with Individuals not Directly associated with the Center / Institute	0	0	0
Total dollar amount of awards	\$177,034	\$245,595	\$18,000

- Are any of the contracts or grants multi-year?
Yes
- How many years does the Center or Institute have left on any current contract or grant?
We have until 2020 to complete recently funded grants, including one from the USDA.
- Have any contracts or grants been renewed during this reporting period?
If yes, how many?
Four projects were renewed.

Other Center or Institute Activities

- Have any patents or royalties been generated? If so, please describe.
- Has the Center or Institute applied for a patent that has not yet been granted? If so, please describe.

Comments or additional information: _____

Employment —

University Positions associated with your C/I

	2011-2012	2014-2015	2015-2016
Number of Faculty (FTE)	.01	.10	.01
Number of A&P and USPS positions (FTE)	0	0	0
Total Positions	.01	.10	.01

Student Employment (include graduate and undergraduate)

	2011-2012	2014-2015	2015-2016
Number of research assistants employed (FTE)	6	4	2
Number of teaching assistants employed (FTE)	0	0	0
Number of interns (with stipend or OPS)	0	0	0
Number of interns (without pay)	0	0	0
Total student positions	6	4	2

Other Student Financial Benefits (include graduate and undergraduate)

	2011-2012	2011-2012	2014-2015	2014-2015	2015-2016	2015-2016
	Number	\$ Amount	Number	\$ Amount	Number	\$ Amount
Out of state tuition waivers	0	\$0	0	\$0	0	\$0
Student fellowships	0	\$0	0	\$0	0	\$0
Scholarships	0	\$0	0	\$0	0	\$0
Post-doctoral support	0	\$0	1	\$43,270	1	\$4,795
Amount of student travel support	3	\$2,055	2	\$720	4	\$8,445
Amount of registration for student conference attendance	1	\$85	0	\$0	0	\$0
Other support (Stipends)	6	\$18,392	4	\$12,637	2	\$4,756

Comments or additional information: _____

Research and Extension —

Note: Web-delivered and CD Rom publications are to be counted in these totals.

Publications (in Refereed Journals, Peer-Reviewed Books or Peer-Reviewed Chapters)

Do not include those credited to the faculty member's primary academic department that are unrelated to the C/I mission.

	2011-2012	2014-2015	2015-2016
Number of faculty publications	2	1	1
Number of student publications	1		

Number of publications authored jointly with other faculty at FSU	4	1	3
Number of publications authored jointly with students in the C/I	4	6	6
Number of publications authored jointly with faculty at locations other than FSU	1	1	

Please have a list of relevant publications available if requested.

Other Publications and Conference Papers

	2011-2012	2014-2015	2015-2016
Number of extension or outreach publications	0	0	0
Number of <u>national</u> conference papers submitted	0	0	0
Number of <u>national</u> conference papers accepted	0	0	0
Date, Conference and Name of presentation(s)	0	0	0
Number of <u>regional</u>	0	0	0

conference papers submitted			
Number of <u>regional</u> conference papers accepted	0	0	0
Date, Conference and Name of presentation(s)	0	0	0

Annual Report

Does the Center or Institute produce an annual report? If so, please have copies available or provide the web link.

Student Publications

	2011-2012	2014-2015	2015-2016
Number of student theses credited to or associated with the C/I	5	1	0
Number of dissertations	0	2	0
Number of any other student papers	0	0	0

Professional Development and Assistance

Consulting

	2011-2012	2014-2015	2015-2016
Number of consulting contracts	0	0	0
Name of consulting recipient(s)	0	0	0
Consulting Subject or Topic	0	0	0
Amount of funding provided through general (not dedicated) funds of the C/I	0	0	0
Amount of funding obtained through contract in addition to general (not dedicated) C/I funds	0	0	0

Technical Assistance

	2011-2012	2014-2015	2015-2016
Number of technical assistance sessions or seminars offered	1	-	-
Name of technical assistance recipient(s)	Tallahassee Tai Chi Society		
Technical Assistance Subject or Topic	Aging and Osteoporosis		
Amount of Funding	none		

Conferences or Symposia

- How many conferences or symposia has the Center or Institute sponsored or hosted during this reporting period. Please list.

Comments or additional information: _____

Management

- Please provide an organizational chart
- Is the Center or Institute legislatively created?
- Does the Center or Institute have an advisory board? How often are meetings held? Does the board manage the C/I or does it serve in an advisory capacity? Please describe and include a list of current members.
 - List of current members:
 - Graduate Students: Shirin Pourafshar, Negin Navaei, Kelli George, Neda Akhavan, Elizabeth Foley, Joseph Munoz.
 - Participating faculty: Michael Delp, Jeong-su Kim, Arturo Figueroa, Michael Ormsbee, Lynn Panton, Jasminka Ilich-Enrst, Samuel Grant, Victor Schepkin, Cathy Levenson, Sara Chelland Campbell, Sarah Johnson, Bahram H. Arjmandi.
 - Director: Bahram H. Arjmandi
 - Associate Director: Jeong-su Kim
- How long has the director served?
 - Since inception, 8 years.
- How does the directorship change hands?
 - N/A
- Are there any issues associated with management transition?
 - N/A
- If there are multiple sites, how are they administered? Who has final oversight?
 - N/A

Comments or additional information: _____

Additional Issues

Issues facing the Center or Institute

- Center operates as a virtual center at this point, however it would benefit if a sizeable space is assigned to the center. In this way we can have activities related to the center such as posting names of sponsor companies and holding events related to the center.

Questions for Centers and Institutes (C/I) Review

Mission and C/I activities

1. Please provide contact information, both for management and for budget information.

Name of Center or Institute: **Institute of Sports Sciences and Medicine**
<http://issm.fsu.edu>

Address: Florida State University
1104 Spirit Way, Room 144
Tallahassee, FL 32306-1493

Phone: 850-645-1016

Director: Chester A. Ray
Director e-mail address: caray@fsu.edu
Phone: 850-644-1850

Budget and funding contact: Barbara Koehler
Contact e-mail address: bkoehler@fsu.edu
Phone: 850-644-4236

Web Link: www.chs.fsu.edu/ISSM

If multidisciplinary, please list departments associated with C/I:

2. What is the Center's or Institute's mission statement?

The Institute will serve as a multidisciplinary, developmental center, providing research and educational programs in sports sciences, sports medicine, athletic/human performance, and injury prevention to the medical and scientific community and the general public.

3. Briefly, what activities are consistently performed that move the C/I toward meeting its established mission? This section should also include activities related to meeting the State Board of Governor's mission. The State Board of Governors mission includes the following:

1. Strengthen Quality and Reputation of Academic Programs and Universities
2. Increase Degree Productivity and Program Efficiency

3. Increase the Number of Degrees Awarded in STEM and Other Areas of Strategic Emphasis
4. Strengthen Quality and Reputation of Scholarship, Research and Innovation
5. Increase Research and Commercialization Activity
6. Increase Collaboration and External Support for Research Activity
7. Strengthen Quality and Recognition of Commitment to Community and Business Engagement
8. Increase Levels of Community and Business Engagement
9. Increase Community and Business Workforce

Activities:

- a. Significant number of National and International Presentations
- b. Significant number of research publications
- c. Active participation of graduate students in the ISSM
- d. Large number of graduate student research projects
- e. Increase number of Degrees in STEM related areas
- f. Many outreach initiatives to the local community have been carried out.

4. Overall Status

- What is the Center or Institute best known for?

The effects of nutritional supplements on human performance.

- What is the greatest strength of the Center or Institute?

The Human Performance Laboratory is an outstanding facility and is where the ISSM is located. The HPL has state-of-the-art equipment and adequate space to conduct high quality research.

- What are the most significant challenges facing the Center or Institute?

Two challenges: 1) Increase the number of investigators using the ISSM facility; and 2) Increase resources so we can further the activity of the Institute beyond a few investigators. We must have funds to provide research opportunities to new investigators who want to be a part of the ISSM.

Funding –

Please provide the source and amount of expenditures from 2011-2012 to 2015-2016, using the following categories. Please round to the nearest dollar.

Expenditures	2011-2012	2014-2015	2015-2016
University (E&G)	\$20,600	\$28,856	\$37,435
State (General Revenue Other than E&G)	0	0	0
State (C&G or other funds)	0	0	0
Federal (C&G)	0	0	0
Local (C&G)	0	0	0
Private / nonprofit organization	\$88,967	\$175,489	\$145,952
Endowment proceeds	0	0	0
Proceeds from patents or royalties	0	0	0
Sales from services or products	0	0	0
Others (specify)	0	0	0
Total expenditures	\$109,567	\$204,345	\$183,387

Endowment Information

Is the C/I supported in whole or in part by proceeds from an endowment? **No**

If so:

- What is the amount of the endowment?
- Where is the endowment managed?
- Does the C/I spend only interest earnings?
- Does the C/I spend part of the capital of the endowment?

Contract and Grant Information

	2011-2012	2014-2015	2015-2016
Number of proposals submitted	0	2	1
Number of proposals funded	0	2	0
Proposals Made Jointly with Individuals not Directly associated with the Center / Institute	0	0	0

Total dollar amount of awards	0	\$89,665	0
--------------------------------------	---	----------	---

- Are any of the contracts or grants multi-year?
Yes. FY2014-15 %27351
- How many years does the Center or Institute have left on any current contract or grant?
One: %31079 (3/1/17-12/31/18)
- Have any contracts or grants been renewed during this reporting period?
If yes, how many?

Other Center or Institute Activities

- Have any patents or royalties been generated? If so, please describe. **No**
- Has the Center or Institute applied for a patent that has not yet been granted? If so, please describe.
No

Comments or additional information: _____

Employment —

University Positions associated with your C/I

	2011-2012	2014-2015	2015-2016
Number of Faculty (FTE)	.2	.3	.3
Number of A&P and USPS positions (FTE)	0	0	0
Total Positions	.2	.3	.3

Student Employment (include graduate and undergraduate)

	2011-2012	2014-2015	2015-2016
Number of research assistants employed (FTE)	2	2	4
Number of teaching assistants employed (FTE)	0	0	0
Number of interns (with stipend or OPS)	0	0	0
Number of interns (without pay)	0	0	0
Total student positions	2	2	4

Other Student Financial Benefits (include graduate and undergraduate)

	2011-2012	2011-2012	2014-2015	2014-2015	2015-2016	2015-2016
	Number	\$ Amount	Number	\$ Amount	Number	\$ Amount
Out of state tuition waivers	0	0	0	0	0	0
Student fellowships	0	0	0	0	0	0
Scholarships	0	0	0	0	0	0
Post-doctoral support	0	0	0	0	0	0
Amount of student travel support	0	0	2	\$632	1	\$19
Amount of registration for student conference attendance	0	0	0	0	3	\$610

Other support (In-state tuition)	0	0	1	\$9,687	0	0
Other support (Stipends)	2	\$2,935	2	\$13,754	4	\$50,355

Comments or additional information: _____

Research and Extension —

Note: Web-delivered and CD Rom publications are to be counted in these totals.

Publications (in Refereed Journals, Peer-Reviewed Books or Peer-Reviewed Chapters)

Do not include those credited to the faculty member's primary academic department that are unrelated to the C/I mission.

	2011-2012	2014-2015	2015-2016
Number of faculty publications	10	16	20
Number of student publications	3	11	13
Number of publications authored jointly with other faculty at FSU	5	7	9
Number of publications authored jointly with students in the C/I	3	11	13
Number of publications authored jointly with faculty at locations other than FSU	0	0	4

Please have a list of relevant publications available if requested.

Other Publications and Conference Papers

	2011-2012	2014-2015	2015-2016
Number of extension or outreach publications	5	2	0
Number of <u>national</u> conference papers submitted	11	16	8
Number of <u>national</u> conference papers accepted	11	16	8
Date, Conference and Name of presentation(s)	Available upon request	Available upon request	Available upon request
Number of <u>regional</u> conference papers submitted	4	5	8
Number of <u>regional</u> conference papers accepted	4	5	8
Date, Conference and Name of presentation(s)	Available upon request	Available upon request	Available upon request

Annual Report

Does the Center or Institute produce an annual report? If so, please have copies available or provide the web link.

No it does not.

Student Publications

	2011-2012	2014-2015	2015-2016
Number of student theses credited to or associated with the C/I	2	2	3
Number of dissertations	0	1	2
Number of any other student papers	0	0	0

Professional Development and Assistance

Consulting

	2011-2012	2014-2015	2015-2016
Number of consulting contracts	0	0	0
Name of consulting recipient(s)	0	0	0
Consulting Subject or Topic	0	0	0
Amount of funding provided through general (not dedicated) funds of the C/I	0	0	0
Amount of funding obtained through contract in addition to general (not dedicated) C/I funds	0	0	0

Technical Assistance

	2011-2012	2014-2015	2015-2016
Number of technical assistance sessions or seminars offered	0	0	0
Name of technical assistance recipient(s)	0	0	0
Technical Assistance Subject or Topic	0	0	0
Amount of Funding	0	0	0

Conferences or Symposia

- How many conferences or symposia has the Center or Institute sponsored or hosted during this reporting period. Please list. Two

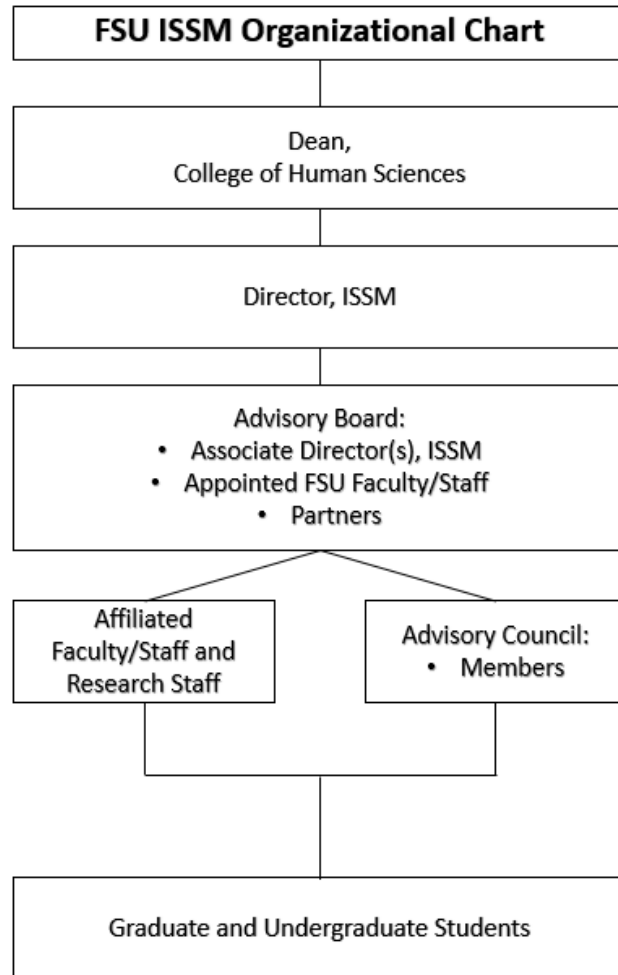
FSU Optimal Human Performance Symposium, International Society of Sports Nutrition (2016).

FSU Optimal Human Performance Symposium, International Society of Sports Nutrition (2014).

Comments or additional information: _____

Management

- Please provide an organizational chart



- Is the Center or Institute legislatively created?
 - No
- Does the Center or Institute have an advisory board?
 - Yes, but has not been active. However, the new director is instituting a new advisory board in the Fall of 2017.
- How often are meetings held?
 - They will occur quarterly.
- Does the board manage the C/I or does it serve in an advisory capacity?
 - Advisory
- Please describe and include a list of current members. N/A
- How long has the director served?
 - Less than 1 year (August 2016)

- How does the directorship change hands?
 - He is appointed by the Dean of the College of Human Sciences
- Are there any issues associated with management transition?
 - No
- If there are multiple sites, how are they administered? Who has final oversight?
 - Currently there are no multiple sites, but final oversight on the workings of the ISSM is the responsibility of the Institute Director.

Comments or additional information: _____

Additional Issues

Issues facing the Center or Institute

Revenue – The new director was left with very little money to advance the ISSM. New sources of money must be generated to improve the activities of the ISSM and increase collaborations across colleges and athletic department.

Questions for Centers and Institutes (C/I) Review

Mission and C/I activities

1. Please provide contact information, both for management and for budget information.

Name of Center or Institute: **Center on Better Health and Life for Underserved Populations**

Physical Address: 2010 Levy Avenue., Building B, Suite 276C

Tallahassee, FL 32310

Mailing Address: Florida State University, MC 1491, Tallahassee, Florida, 32306-1491

Phone: 850-645-8110

Director: Penny A. Ralston

E-mail address: pralston@fsu.edu

Phone: 850-645-8110

Budget contact: Barbara Koehler

E-mail address: bkoehler@fsu.edu

Phone: 850-644-4236

Web Link: <http://www.bhl.fsu.edu>

If multidisciplinary, please list departments associated with C/I:

2. What is the Center's or Institute's mission statement?

The mission of the Center is to improve health of underserved populations through developing and evaluating community-based interventions.

3. Briefly, what activities are consistently performed that move the C/I toward meeting its established mission? This section should also include activities related to meeting the State Board of Governor's mission. The State Board of Governors mission includes the following:

1. Strengthen Quality and Reputation of Academic Programs and Universities
2. Increase Degree Productivity and Program Efficiency
3. Increase the Number of Degrees Awarded in STEM and Other Areas of Strategic Emphasis

4. Strengthen Quality and Reputation of Scholarship, Research and Innovation
5. Increase Research and Commercialization Activity
6. Increase Collaboration and External Support for Research Activity
7. Strengthen Quality and Recognition of Commitment to Community and Business Engagement
8. Increase Levels of Community and Business Engagement
9. Increase Community and Business Workforce

Activities: The activities of the Center focus on the following general objectives.

- a. Conduct research on health disparities with underserved populations to determine needs and inform the program development process;
- b. Develop, implement and evaluate community-based programs to address health disparities of underserved populations;
- c. Develop, implement and evaluate mentoring programs to increase diversity in the health workforce.

4. Overall Status

- What is the Center or Institute best known for?
 - The Center has been recognized by the National Institutes of Health through two funded projects: 1) a \$1.75M award (1R24 MD002807) received in 2008 for “Reducing Cardiovascular Risk in African Americans,” and 2) a \$1.5M award for the follow-on dissemination grant ((2R24 MD002807), “Health for Hearts United Leadership Institute.” The Center averages \$400,000 in research expenditures on an annual basis.
 - We have developed partnerships with other research universities in Florida. One recently completed implementation science project was a collaboration with Dr. Elizabeth Shenkman, who has served as Co-Chair of the Community Engagement Core of the NIH-funded Clinical and Translational Science Institute (CTSI) at the University of Florida. The purpose of the project was to determine the feasibility of an information technology adolescent health risk assessment in a health care center located in an underserved neighborhood in Tallahassee, Florida.
 - In addition to local research efforts, the Center was extensively involved in leading the effort to develop the *Health Disparities Research (HDR) Agenda for Florida* in 2011 (http://cancer.ufl.edu/files/2012/08/FL_CURED.pdf). Specifically, working in collaboration with the Office of Minority Health in the Florida Department of Health, the Biomedical Research Advisory Council and the Florida Center on Universal Research to Eliminate Disease (FL CURED), a Health Disparities Summit, attended by 50 researchers, was held in 2010 to begin developing priorities for a research direction for the state which was followed by the formation of a 31 member HDR Advisory Committee that developed the HDR Agenda in 2011. Subsequently, the

Center director worked in conjunction with several others to secure state funding for the Florida Health Equity Research Institute (FL HERI) that has the mission of implementing the HDR Agenda for Florida through proactive collaborations among academic institutions, health care providers, government organizations, community-based organizations, and funding organizations (for more information, go to: flheri.org). The Center now handles Finance and Operations for FL HERI.

- Finally, the Center also serves as a training site for undergraduate and graduate students from FSU and other educational institutions in the local area. In any given semester, at least 12 students are involved in the Center as volunteers or paid staff. Thus far, the Center has helped facilitate degree completion of 43 students (18 bachelor's, 21 masters', 3 Ph.D.'s and 1 M.D.) and the placement of 32 students (16 in medical school, 5 in doctoral programs, one in dentistry school, 8 employed full-time, including two in higher education academic positions). More broadly, the Center is affiliated with the Sullivan Alliance established by the Honorable Louis Sullivan, MD, former Secretary of the U.S. Department of Health and Human Services, as a result of the 2004 report, *Missing Persons: Minorities in the Health Professions*. Through this affiliation, the Center helped to launch the Florida Alliance for Health Professions Diversity (FAHPD) in 2007 by hosting the inaugural conference for the organization. Since then 18 universities and other stakeholder organizations in the state have joined FAHPD. FAHPD, which now partners with the Florida Health Equity Research Institute to implement the Education and Training Core, has two signature programs to increase diversity in the health workforce, including the Florida Alliance Scholars, a statewide summer research internship for high school through master level students, and the Student Symposium on Health Professions that rotates among different communities around the state. Six students from the Center have served as Florida Alliance Scholars.
- What is the greatest strength of the Center or Institute?
 - One of the major strengths of the Center is that we develop relationships with underserved populations in Leon and surrounding counties and involve local leaders in developing the focus, methods and interpretation of the results for our studies. We involve students throughout this process and have an excellent track record of training health professionals who have had substantive clinical experiences with low income, culturally diverse populations. This community-based approach is consistent with the trend towards interdisciplinary, translational science. We also pride ourselves in developing sustainable relationships, with some of our projects now serving as ongoing programs in the community.
- What are the most significant challenges facing the Center or Institute?
 - Funding is always a challenge.

Funding –

Please provide the source and amount of expenditures from 2011-2012 to 2015-2016, using the following categories. Please round to the nearest dollar.

Expenditures	2011-2012	2014-2015	2015-2016
University (E&G)	0	0	0
State (General Revenue Other than E&G)	0	0	0
State (C&G or other funds)	30,157	4,679	0
Federal (C&G)	478,605	406,155	532,558
Local (C&G)	0	0	0
Private / nonprofit organization	50,370	44,290	67,423
Endowment proceeds	0	0	0
Proceeds from patents or royalties	0	0	0
Sales from services or products	0	0	0
Others (SRAD)	11,980	7,293	30,276
Total expenditures	571,112	462,417	630,257

Endowment Information

Is the C/I supported in whole or in part by proceeds from an endowment? No

If so:

- What is the amount of the endowment?
- Where is the endowment managed?
- Does the C/I spend only interest earnings?
- Does the C/I spend part of the capital of the endowment?

Contract and Grant Information

	2011-2012	2014-2015	2015-2016
Number of proposals submitted	6	0	1
Number of proposals funded	5	0	1
Proposals Made Jointly with Individuals not Directly associated with the Center/ Institute	0	0	0
Total dollar amount of awards	\$124,379	0	\$17,000

- Are any of the contracts or grants multi-year?
- How many years does the Center or Institute have left on any current contract or grant?
 Humana Foundation (subcontract)
 Ralston Co-PI 6/1/2017-12/31/2018
Health Smart for Black Churches in Jacksonville
 The overall goal of this project is to implement the Health Smart intervention with six African American churches in Jacksonville, Florida. (Carolyn Tucker, PI).
- Have any contracts or grants been renewed during this reporting period?
 If yes, how many?
 During this reporting period, three grants have been renewed:
 2R24MD002807, National Institute on Minority Health
 Ralston PI 7/11/2013-2/28/2017
Health for Hearts United Leadership Institute
 The overall goal of this project is to disseminate outcomes of the Reducing CVD Risk Study by implementing and evaluating the Health for Hearts United Leadership Institute (HHU Lead) using a three-phase model: training, coaching and planning, and delivery and recognition.

 1R24MD002807, National Institute on Minority Health
 Ralston PI 6/3/08-1/31/13
Reducing Cardiovascular Risk in Mid-life and Older African Americans
 The overall goal of this project is to reduce CVD risk factors in mid-life and older AAs through implementing and evaluating a church-based health intervention.

Florida Blue Foundation (subcontract)
 Ralston Collaborator 6/1/14-6/30/16
Childhood Obesity Prevention and Education Project
 The purpose of this project is to continue the development and evaluation of Youth Health Leadership Program, which serves as the youth arm of the Childhood Obesity Prevention and Education (COPE) Coalition in Tallahassee/Leon County, Florida. (Cynthia Harris, PI).

Other Center or Institute Activities

- Have any patents or royalties been generated? If so, please describe.
 Not applicable.
- Has the Center or Institute applied for a patent that has not yet been granted? If so, please describe.
 Not applicable.

Comments or additional information: _____

Employment —

University Positions associated with your C/I

	2011-2012	2014-2015	2015-2016
Number of Faculty (FTE)	2.0 FTE	3.0 FTE	3.0 FTE
Number of A&P and USPS positions (FTE)			
Total Positions	2.0 FTE	3.0 FTE	3.0FTE

Student Employment (include graduate and undergraduate)

	2011-2012	2014-2015	2015-2016
Number of research assistants employed (FTE)	1	0	0
Number of teaching assistants employed (FTE)	0	0	0
Number of interns (with stipend or OPS)	0	0	0
Number of interns (without pay)	3	5	4
Total student positions	4	5	4

Number of interns (without pay) are student volunteers in the BHL Center.

Other Student Financial Benefits (include graduate and undergraduate)

	2011-2012	2011-2012	2014-2015	2014-2015	2015-2016	2015-2016
	Number	\$ Amount	Number	\$ Amount	Number	\$ Amount
Out of state tuition waivers	0	0	0	0	0	0
Student fellowships	0	0	0	0	0	0
Scholarships	0	0	0	0	0	0
Post-doctoral support	2	6,622	0	0	0	0
Amount of student travel support	1	172	1	266	0	0
Amount of registration for student conference attendance	0	0	0	0	0	0
Other support (In-state tuition waiver)	1	7,410	0	0	0	0
Other support (In-state tuition waiver)	1	18,300	0	0	0	0

Comments or additional information: _____

Research and Extension —

Note: Web-delivered and CD Rom publications are to be counted in these totals.

Publications (in Refereed Journals, Peer-Reviewed Books or Peer-Reviewed Chapters)

Do not include those credited to the faculty member's primary academic department that are unrelated to the C/I mission.

	2011-2012	2014-2015	2015-2016
Number of faculty publications	2	7	3
Number of student publications	1	2	2
Number of publications authored jointly with other faculty at FSU	1	7	3
Number of publications authored jointly with students in the C/I	1	2	2
Number of publications authored jointly with faculty at locations other than FSU	1	7	3

Please have a list of relevant publications available if requested.

Other Publications and Conference Papers

	2011-2012	2014-2015	2015-2016
Number of extension or outreach publications			
Number of <u>national</u> conference papers submitted	8	3	1
Number of <u>national</u> conference	8	3	1

papers accepted			
Date, Conference and Name of presentation(s)	Available upon request	Available upon request	Available upon request
Number of <u>regional</u> conference papers submitted			
Number of <u>regional</u> conference papers accepted			
Date, Conference and Name of presentation(s)			

Annual Report

Does the Center or Institute produce an annual report? If so, please have copies available or provide the web link.

Student Publications

	2011-2012	2014-2015	2015-2016
Number of student theses credited to or associated with the C/I	0	0	0
Number of dissertations	1	0	0
Number of any other student papers	0	0	0

Professional Development and Assistance

Consulting

	2011-2012	2014-2015	2015-2016
Number of consulting contracts	1	2	2
Name of consulting recipient(s)	Iowa State University	University of Kentucky University of Florida	University of Southern Mississippi University of Florida
Consulting Subject or Topic	Administration in Higher Education	Grant mentoring, Serve on CTSI Advisory Board	Church-based health promotion, Serve on CTSI Advisory Board
Amount of funding provided through general (not dedicated) funds of the C/I	\$4,000	\$1,500, \$100	\$1,500, \$100
Amount of funding obtained through contract in addition to general (not dedicated) C/I funds			

Technical Assistance

	2011-2012	2014-2015	2015-2016
Number of technical assistance sessions or seminars offered	0	0	0
Name of technical assistance recipient(s)	N/A	N/A	N/A
Technical Assistance Subject or Topic	N/A	N/A	N/A
Amount of Funding	N/A	N/A	N/A

Conferences or Symposia

- How many conferences or symposia has the Center or Institute sponsored or hosted during this reporting period. Please list.

Dissemination Symposium on Outcomes of the Reducing Cardiovascular Disease Risk Project, October 5-6, 2012.

Comments or additional information: _____

Management

- Please provide an organizational chart
- Is the Center or Institute legislatively created? No.
- Does the Center or Institute have an advisory board? How often are meetings held? No. We develop advisory groups for each project.
- Does the board manage the C/I or does it serve in an advisory capacity? Not applicable. Please describe and include a list of current members. Not applicable.
- How long has the director served? 10 years.
- How does the directorship change hands? No.
- Are there any issues associated with management transition? No.
- If there are multiple sites, how are they administered? No. Who has final oversight? Not applicable.

Comments or additional information: _____

Additional Issues

Issues facing the Center or Institute

Questions for Centers and Institutes (C/I) Review

Mission and C/I activities

1. *Please provide contact information, both for management and for budget information.*

Name of Center or Institute: **Center for Couple and Family Therapy**

Address: 540 W. Jefferson Street
Tallahassee, FL 32301

Phone: 850-644-1588

Director: Dr. Kristen Greene
Director e-mail address: khgreene@fsu.edu
Phone: (850) 644-1588

Budget and funding contact: Barbara Koehler
Contact e-mail address: bkoehler@fsu.edu
Phone: 850-644-4236

Web Link: <http://ccft.fsu.edu>

If multidisciplinary, please list departments associated with C/I:

2. *What is the Center's or Institute's mission statement?*

Generate, coordinate, and facilitate scholarly research and training in the area of marriage and family through a systematic program of research, development, and evaluation; and, through its Family Therapy Clinic comprehensive training in family psychotherapy.

3. *Briefly, what activities are consistently performed that move the C/I toward meeting its established mission? This section should also include activities related to meeting the State Board of Governor's mission. The State Board of Governors mission includes the following:*

Activites:

The Center for Couple and Family Therapy (CCFT) is operated by the Marriage and Family Therapy Program in the Department of Family and Child Sciences. For more than 40 years, it has served as a critical interface between the university and greater Tallahassee community. The CCFT is staffed primarily by MFT doctoral students who

work with individuals, couples, and families with a variety of presenting problems, including relationship distress, anxiety, grief and loss, parenting, premarital counseling, couple communication, and involvement with the Child Welfare System. Services are available on a sliding fee scale.

The CCFT provides a key context for pursuing the research, training, and service mission of the department, college, and university. The core objectives of the CCFT are as follows:

- 1) To advance research in MFT and related fields
- 2) To train the next generation of doctoral level clinical scientists
- 3) To serve the needs of the community

4. *Overall Status*

What is the Center or Institute best known for?

The Center is a non-profit institution serving individuals, couples, families, children, and public agencies. Therapeutic services are provided on a sliding fee scale to the university communities and the general Tallahassee population. The Center offers best-practices consultation and supervision to doctoral students. Additionally, the Center provides a rich internship experience for undergraduate FSU students interested in the mental health field. The Center participates in a large data consortium that contributes to a diverse clinical database to allow for high-impact MFT research.

What is the greatest strength of the Center or Institute?

The greatest strength is the clinical training for the doctoral program in Marriage and Family Therapy. The CCFT houses the audio and video equipment to provide live supervision to therapist and ensure the highest quality of care for clients. The CCFT is an integral part of the Department of Family and Child Sciences as well as FSU. As a primary referral source for the University Counseling Center, the CCFT serves hundreds of university students struggling with mental health care.

What are the most significant challenges facing the Center or Institute?

Some of the more significant challenges facing the CCFT are high community and student demand for counseling services and the inadequate space and lack of support staff to provide those services. We simply do not have enough space to meet the needs of the community.

Funding –

Please provide the source and amount of expenditures from 2011-2012 to 2015-2016, using the following categories. Please round to the nearest dollar.

Expenditures	2011-2012	2014-2015	2015-2016
University (E&G)	\$0	\$0	\$17,830
State (General Revenue Other than E&G)	\$22,931	\$24,955	\$31,447
State (C&G or other funds)	\$0	\$0	\$0
Federal (C&G)	\$0	\$0	\$0
Local (C&G)	\$0	\$0	\$0
Private / nonprofit organization	\$0	\$0	\$33
Endowment proceeds	\$0	\$0	\$0
Proceeds from patents or royalties	\$0	\$0	\$0
Sales from services or products	\$24,355	\$19,747	\$34,319
Others (specify)			
Total expenditures	\$47,286	\$44,702	\$83,629

Note: Sales from services – fee for clinic services

Is the C/I supported in whole or in part by proceeds from an endowment? No

If so:

- What is the amount of the endowment?
- Where is the endowment managed?
- Does the C/I spend only interest earnings?
- Does the C/I spend part of the capital of the endowment?

Contract and Grant Information

	2011-2012	2014-2015	2015-2016
Number of proposals submitted	0	0	0
Number of proposals funded	0	0	0
Proposals Made Jointly with Individuals not Directly associated with the Center / Institute	0	0	0
Total dollar amount of awards	\$0	\$0	\$0

- Are any of the contracts or grants multi-year? N/A
- How many years does the Center or Institute have left on any current contract or grant? N/A
- Have any contracts or grants been renewed during this reporting period? If yes, how many? N/A

Other Center or Institute Activities

- Have any patents or royalties been generated? If so, please describe. N/A
- Has the Center or Institute applied for a patent that has not yet been granted? If so, please describe. N/A

Comments or additional information: _____

Employment —

University Positions associated with your C/I

	2011-2012	2014-2015	2015-2016
Number of Faculty (FTE)	.5	.5	.5
Number of A&P and USPS positions (FTE)			
Total Positions	.5	.5	.5

Student Employment (include graduate and undergraduate)

	2011-2012	2014-2015	2015-2016
Number of research assistants employed (FTE)	0	0	0

Number of teaching assistants employed (FTE)	0	0	0
Number of interns (with stipend or OPS)	0	0	0
Number of interns (without pay)	Do not have data	8	11
Total student positions	0	8	11

Other Student Financial Benefits (include graduate and undergraduate)

	2011-2012	2011-2012	2014-2015	2014-2015	2015-2016	2015-2016
	Number	\$ Amount	Number	\$ Amount	Number	\$ Amount
Out of state tuition waivers	0	\$0	0	\$0	1	\$14,432
Student fellowships	0	\$0	0	\$0	0	\$0
Scholarships	0	\$0	0	\$0	0	\$0
Post-doctoral support	0	\$0	0	\$0	0	\$0
Amount of student travel support	0	\$0	0	\$0	0	\$0
Amount of registration for student conference attendance	0	\$0	0	\$0	0	\$0
Other support (In-State tuition)	0	\$0	0	\$0	1	\$9,684
Other support (Stipends)	0	\$0	0	\$0	1	\$17,830

Comments or additional information: Stipend and waivers are for the Z9185 (graduate assistant in professional)

Research and Extension —

Note: Web-delivered and CD Rom publications are to be counted in these totals.

Publications (in Refereed Journals, Peer-Reviewed Books or Peer-Reviewed Chapters)

Do not include those credited to the faculty member's primary academic department that are unrelated to the C/I mission.

	2011-2012	2014-2015	2015-2016
Number of faculty publications	n/a	n/a	n/a
Number of student publications	n/a	n/a	n/a
Number of publications authored jointly with other faculty at FSU	n/a	n/a	n/a
Number of publications authored jointly with students in the C/I	n/a	n/a	n/a
Number of publications authored jointly with faculty at locations other than FSU	n/a	n/a	n/a

Please have a list of relevant publications available if requested.

Other Publications and Conference Papers

	2011-2012	2014-2015	2015-2016
Number of extension or outreach publications	n/a	n/a	n/a

Number of <u>national</u> conference papers submitted	n/a	n/a	n/a
Number of <u>national</u> conference papers accepted	n/a	n/a	n/a
Date, Conference and Name of presentation(s)	n/a	n/a	n/a
Number of <u>regional</u> conference papers submitted	n/a	n/a	n/a
Number of <u>regional</u> conference papers accepted	n/a	n/a	n/a
Date, Conference and Name of presentation(s)	n/a	n/a	n/a

Annual Report

Does the Center or Institute produce an annual report? No
If so, please have copies available or provide the web link.

Student Publications

	2011-2012	2014-2015	2015-2016
Number of student theses credited to or associated with the C/I	n/a	n/a	n/a

Number of dissertations	n/a	n/a	n/a
Number of any other student papers	n/a	n/a	n/a

Professional Development and Assistance

Consulting

	2011-2012	2014-2015	2015-2016
Number of consulting contracts	n/a	n/a	n/a
Name of consulting recipient(s)	n/a	n/a	n/a
Consulting Subject or Topic	n/a	n/a	n/a
Amount of funding provided through general (not dedicated) funds of the C/I	n/a	n/a	n/a
Amount of funding obtained through contract in addition to general (not dedicated) C/I funds	n/a	n/a	n/a

Technical Assistance

	2011-2012	2014-2015	2015-2016
Number of technical assistance sessions or seminars offered	n/a	n/a	n/a
Name of technical assistance recipient(s)	n/a	n/a	n/a
Technical Assistance Subject or Topic	n/a	n/a	n/a
Amount of Funding	n/a	n/a	n/a

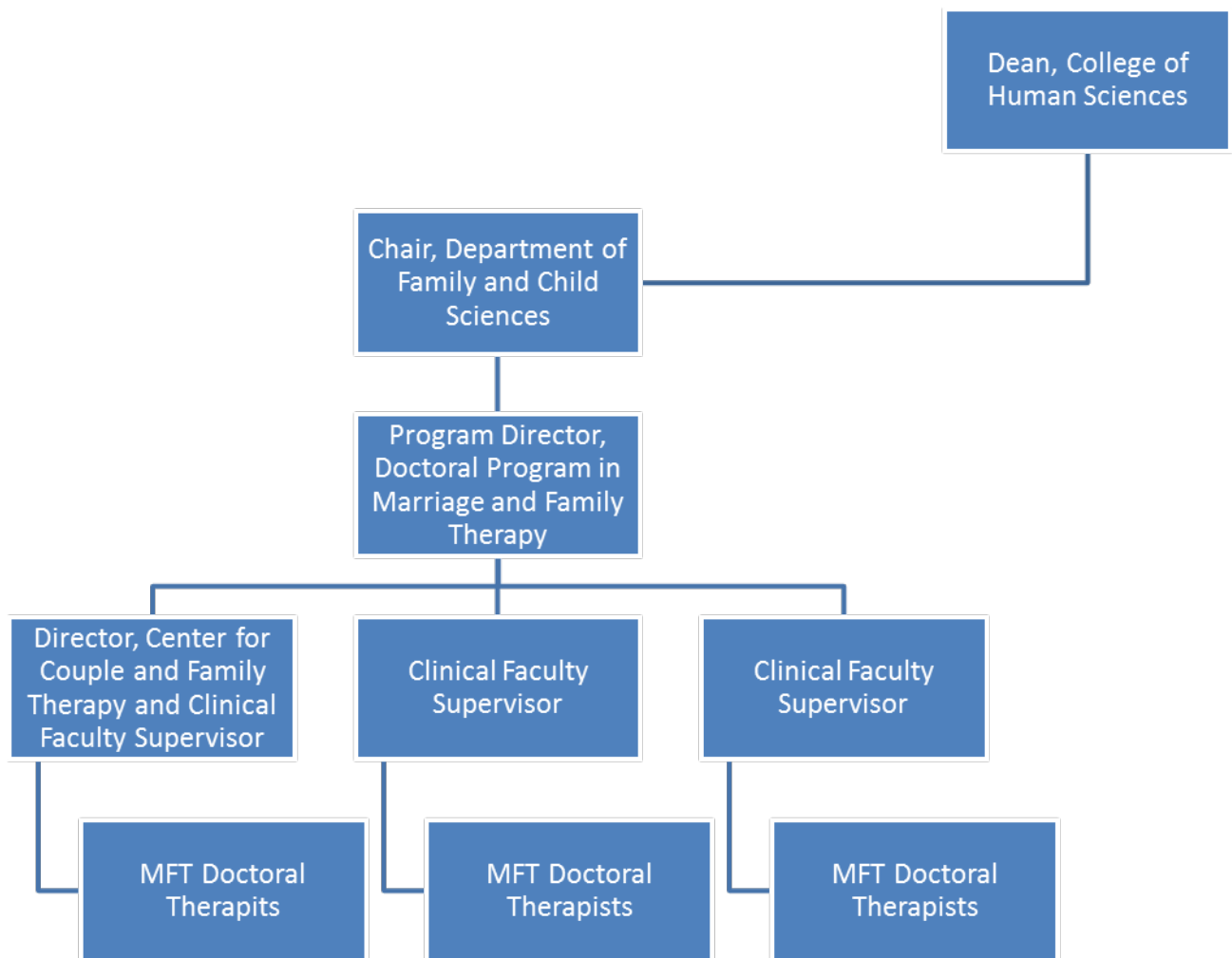
Conferences or Symposia

- How many conferences or symposia has the Center or Institute sponsored or hosted during this reporting period. Please list.

Comments or additional information: _____

Management

- Please provide an organizational chart



- Is the Center or Institute legislatively created? No
- Does the Center or Institute have an advisory board? No
How often are meetings held? The MFT faculty hold meetings at least once a month in which the activities of the Center are discussed.
Does the board manage the C/I or does it serve in an advisory capacity? N/A
Please describe and include a list of current members.
- How long has the director served? 8/2015 – present
- How does the directorship change hands? Hiring Process by FCS Department Chair and Faculty
- Are there any issues associated with management transition? No
- If there are multiple sites, how are they administered? N/A/ Who has final oversight? n/a

Additional Issues

Issues facing the Center or Institute

Personnel/Staffing needs: The CCFT is in need of a part-time administrative assistant. Currently, the front desk is staffed with approximately 6 different undergraduate volunteers each semester. This results in communication and training difficulties that impact the professional quality of the business.

Physical Space: The CCFT is located in a small house with three therapy rooms and inadequate supervision space. We have 10 therapists serving approximately 80 clients a week with only three therapy rooms available. On a daily basis, the director's office is utilized as an overflow therapy room due to lack of space. The CCFT is in need of a therapeutic space with at least 5 therapy rooms, a large waiting area for clients, and an adequate live supervision room that can accommodate the audio/visual equipment necessary for state-of-the-art supervision.

Questions for Centers and Institutes (C/I) Review

Mission and C/I activities

1. Please provide contact information, both for management and for budget information.

Name of Center or Institute: **Florida State University Family Institute**

Address: Florida State University
College of Human Sciences
Longmire Building Room 304
Tallahassee, FL 32306-1491

Phone: 850-644-4914

Director: Dr. Frank Fincham
Director e-mail address: ffincham@fsu.edu
Phone: 850-644-4914

Budget and funding contact: Barbara Koehler
Contact e-mail address: bkoehler@fsu.edu
Phone: 850-644-4236

Web Link: <http://www.chs.fsu.edu/fi>

If multidisciplinary, please list departments associated with C/I:

2. What is the Center's or Institute's mission statement?

The Florida State University Family Institute is a multidisciplinary unit that brings together faculty, students, government, and community resources to provide a centralized source of information, service, research, and critical thinking related to families. Through this collaboration, research, education, policy, and service activities will be carried out. The Institute serves as an important vehicle for bringing together the various talents of those cited above to promote the optimal development of families.

3. Briefly, what activities are consistently performed that move the C/I toward meeting its established mission? This section should also include activities related to meeting the State Board of Governor's mission. The State Board of Governors mission includes the following:

1. Strengthen Quality and Reputation of Academic Programs and Universities

2. Increase Degree Productivity and Program Efficiency
3. Increase the Number of Degrees Awarded in STEM and Other Areas of Strategic Emphasis
4. Strengthen Quality and Reputation of Scholarship, Research and Innovation
5. Increase Research and Commercialization Activity
6. Increase Collaboration and External Support for Research Activity
7. Strengthen Quality and Recognition of Commitment to Community and Business Engagement
8. Increase Levels of Community and Business Engagement
9. Increase Community and Business Workforce

Activities:

- a. Grant proposals are developed and submitted to funding agencies. Such proposals have led to funding with collaborators in different units at FSU as well as with collaborators at other institutions. **This activity contributes to the goal of increasing collaboration and external support for research activity.**
- b. Grant supported research is conducted and published in highly ranked peer review journals. **This strengthens the quality and reputation of scholarship, research and innovation associated with FSU**
- c. Both graduate and undergraduate students are included in research activities. Two undergraduate students have won national awards on the basis of this work. **Graduate student theses and dissertations contribute to the goal of increasing degree productivity and program efficiency.**
- d. Each year significant numbers of undergraduate students participate in the activities of the Family Institute. For example, in 2016, the following 29 undergraduate students gained experience in conducting research: Rebecca Salsbury, Joseph Leonard, Megan Sicard, Courtney Bryant, Orlane Caro, Avery M. Harrison, Gio Ponce, Michael Oh, Madison Daunt, Kendall Hoover, Nicole Hyde, Adline Metayer, Victoria Rosas, Stephen Barbera, Bianca Riffe, Laura La Puente, Tori Reiman, Tara Ghorbani, Fatima Mir, Dorothea Ballai, Madison Daun, Annie L. Kennedy, Carlei M. Atkinson, Haley A. Taylor, Kiffanie M. Tanner, Megan E. Hutchinson, Julie M. Wagner, Amanda Prager, Allison T. Janzen. This provides a unique experience for undergraduate students and this contributes to strengthening the Quality and Reputation of Academic Programs and Universities

4. *Overall Status*

- What is the Center or Institute best known for?
Cutting edge research on relationships, especially family relationships

- What is the greatest strength of the Center or Institute?
Its data gathering infrastructure that consistently supports faculty and student research endeavors.
- What are the most significant challenges facing the Center or Institute?

The total reliance on “soft” (grant) monies for the Institute’s operation leads to fluctuation in its budget making longer term planning extremely difficult. It would benefit tremendously if dedicated lines for personnel and/or hard monies were made available for its operation.

Funding –

Please provide the source and amount of expenditures from 2011-2012 to 2015-2016, using the following categories. Please round to the nearest dollar.

Expenditures	2011-2012	2014-2015	2015-2016
University (E&G)	\$99	\$0	\$0
State (General Revenue Other than E&G)	\$0	\$0	\$0
State (C&G or other funds)	\$0	\$0	\$0
Federal (C&G)	\$128,291	\$9,680	\$9,347
Local (C&G)	\$0	\$0	\$0
Private / nonprofit organization	\$157,447	\$265,183	\$185,285
Endowment proceeds	\$35,337	\$38,609	\$39,590
Proceeds from patents or royalties	\$0	\$0	\$0
Sales from services or products	\$0	\$0	\$0
Others (specify)			
SRAD	\$2,317	\$27,878	\$3,743
Total expenditures	\$323,491	\$341,350	\$237,965

Endowment Information

Is the C/I supported in whole or in part by proceeds from an endowment? In part
If so:

- What is the amount of the endowment? \$986,551.68 (as of 6/2017)
- Where is the endowment managed? FSU Foundation
- Does the C/I spend only interest earnings? Yes
- Does the C/I spend part of the capital of the endowment? No

Contract and Grant Information

	2011-2012	2014-2015	2015-2016
Number of proposals submitted	2	4	2
Number of proposals funded	0	1	1
Proposals Made Jointly with Individuals not Directly associated with the Center / Institute	1	2	1
Total dollar amount of awards	\$0.00	\$280,181	\$724,919

- Are any of the contracts or grants multi-year? Yes
- How many years does the Center or Institute have left on any current contract or grant? Case Western – 2 years (awarded 2015-16) (7/1/2016-6/30/2019)
- Have any contracts or grants been renewed during this reporting period? If yes, how many? None

Other Center or Institute Activities

- Have any patents or royalties been generated? If so, please describe.
- Has the Center or Institute applied for a patent that has not yet been granted? If so, please describe. No

Comments or additional information: _____

Employment —

University Positions associated with your C/I

	2011-2012	2014-2015	2015-2016
Number of Faculty (FTE)	3	1	1
Number of A&P and USPS	0	0	0

positions (FTE)			
Total Positions	3	1	1

Student Employment (include graduate and undergraduate)

	2011-2012	2014-2015	2015-2016
Number of research assistants employed (FTE)	4	1	1
Number of teaching assistants employed (FTE)	0	0	0
Number of interns (with stipend or OPS)	0	0	0
Number of interns (without pay)	3	5	4
Total student positions	7	6	5

Other Student Financial Benefits (include graduate and undergraduate)

	2011-2012	2011-2012	2014-2015	2014-2015	2015-2016	2015-2016
	Number	\$ Amount	Number	\$ Amount	Number	\$ Amount
Out of state tuition waivers	0	\$0.00	0	\$0.00	0	\$0.00
Student fellowships	0	\$0.00	0	\$0.00	0	\$0.00
Scholarships	0	\$0.00	0	\$0.00	0	\$0.00
Post-doctoral support	2	\$37,393.82	2	\$60,569.43	1	\$71,987.52

Amount of student travel support	0	\$0.00	1	\$663.97	2	\$1,244.00
Amount of registration for student conference attendance	0	\$0.00	2	\$410.00	3	\$455.00
Other support (in-state tuition waiver)	2	\$5,492.16	0	\$0.00	0	\$0.00
Other support (RA stipends)	4	\$23,136.28	0	\$0.00	1	\$3,500

Comments or additional information: _____

Research and Extension —

Note: Web-delivered and CD Rom publications are to be counted in these totals.

Publications (in Refereed Journals, Peer-Reviewed Books or Peer-Reviewed Chapters)

Do not include those credited to the faculty member's primary academic department that are unrelated to the C/I mission.

	2011-2012	2014-2015	2015-2016
Number of faculty publications	19	17	24
Number of student publications	All done jointly	All done jointly	All done jointly
Number of publications authored jointly with other faculty at FSU	5	2	1
Number of publications authored jointly with	11	10	9

students in the C/I			
Number of publications authored jointly with faculty at locations other than FSU	8	10	16

Please have a list of relevant publications available if requested.

Other Publications and Conference Papers

	2011-2012	2014-2015	2015-2016
Number of extension or outreach publications	0	0	0
Number of <u>national</u> conference papers submitted	10	10	21
Number of <u>national</u> conference papers accepted	10	10	18
Date, Conference and Name of presentation(s)	Available upon request	Available upon request	Available upon request
Number of <u>regional</u> conference papers submitted	0	0	0
Number of <u>regional</u> conference papers accepted	0	0	0
Date, Conference and Name of presentation(s)	0	0	0

Annual Report

Does the Center or Institute produce an annual report? If so, please have copies available or provide the web link. No

Student Publications

	2011-2012	2014-2015	2015-2016
Number of student theses credited to or associated with the C/I	1	1	0
Number of dissertations	1	2	1
Number of any other student papers	11	10	9

Professional Development and Assistance N/A**Consulting**

	2011-2012	2014-2015	2015-2016
Number of consulting contracts			
Name of consulting recipient(s)			
Consulting Subject or Topic			
Amount of funding provided through general (not dedicated) funds of the C/I			
Amount of funding obtained through contract in addition to general (not dedicated) C/I funds			

Technical Assistance

	2011-2012	2014-2015	2015-2016
Number of technical assistance sessions or seminars offered	0	0	1
Name of technical assistance recipient(s)			Dept of Family and Child Sciences
Technical Assistance Subject or Topic			Dyadic data analysis
Amount of Funding	0	0	0

Conferences or Symposia

- How many conferences or symposia has the Center or Institute sponsored or hosted during this reporting period. Please list. none

Comments or additional information: A monograph resulting from a 2009 hosted conference was published in 2011.

Management

- Please provide an organizational chart. Director answers to Dean of College of Human Sciences and Head of department of Family and Child Sciences
- Is the Center or Institute legislatively created? No
- Does the Center or Institute have an advisory board? How often are meetings held? Does the board manage the C/I or does it serve in an advisory capacity? Please describe and include a list of current members. Yes, Consulted as needed, Kim Halford (Australia)
- How long has the director served? 12 years
- How does the directorship change hands? Dean decision
- Are there any issues associated with management transition? No
- If there are multiple sites, how are they administered? Who has final oversight? N/A

Comments or additional information: _____

Additional Issues

Issues facing the Center or Institute.

Questions for Centers and Institutes (C/I) Review

Mission and C/I activities

1. Please provide contact information, both for management and for budget information.

Name of Center or Institute: **Institute for Social Work Research**

Address: 296 Champions Way Suite 2300UCC

Phone: 850-644-4751

Director: Dr. James Clark

Director e-mail address: jclark5@fsu.edu

Phone:850-644-4752

Budget and funding contact: DeAnn Scarborough

Contact e-mail address: dscarborough@fsu.edu

Phone:850-644-5504

Web Link: <http://csw.fsu.edu/research/institutes-centers>

If multidisciplinary, please list departments associated with C/I:

2. What is the Center's or Institute's mission statement?

The mission of the Institute for Social Work Research (ISWR) is to conduct research and training for government and the private sector on social work related issues. ISWR brings together the expertise of scientists and other professionals throughout the university system, the community and the state. This interdisciplinary approach promotes the development of recommendations related to practice, research, policy formulation and program implementation that can contribute to improving the welfare of Florida's citizens.

3. Briefly, what activities are consistently performed that move the C/I toward meeting its established mission? This section should also include activities related to meeting the State Board of Governor's mission. The State Board of Governors mission includes the following:

1. Strengthen Quality and Reputation of Academic Programs and Universities
2. Increase Degree Productivity and Program Efficiency
3. Increase the Number of Degrees Awarded in STEM and Other Areas of Strategic Emphasis

4. Strengthen Quality and Reputation of Scholarship, Research and Innovation
5. Increase Research and Commercialization Activity
6. Increase Collaboration and External Support for Research Activity
7. Strengthen Quality and Recognition of Commitment to Community and Business Engagement
8. Increase Levels of Community and Business Engagement
9. Increase Community and Business Workforce

Activities:

- a. The ISWR promotes student involvement in research activities by coordinating Graduate Research Assistant assignments to research projects within College of Social Work
- b. ISWR provides support for faculty performing research by monitoring project activity and providing fiscal reporting as requested.
- c. ISWR provides administrative support to faculty for proposal submissions

4. Overall Status

- What is the Center or Institute best known for?
Providing research support for College of Social Work
- What is the greatest strength of the Center or Institute?
The strength of our researchers and the innovative ideas of our students.
- What are the most significant challenges facing the Center or Institute?

Funding –

Please provide the source and amount of expenditures from 2011-2012 to 2015-2016, using the following categories. Please round to the nearest dollar.

Expenditures	2011-2012	2014-2015	2015-2016
University (E&G)	\$53,702	\$61,346	\$64,583
State (General Revenue Other than E&G)			
State (C&G or other funds)	\$12,593	\$42,687	\$77,598
Federal (C&G)	\$65,158	\$216,495	\$279,317
Local (C&G)			

Private / nonprofit organization	\$6,800	\$52,064	\$164,977
Endowment proceeds			
Proceeds from patents or royalties			
Sales from services or products			
Others (specify)			
Total expenditures	\$138,253	\$372,592	\$586,475

Endowment Information

Is the C/I supported in whole or in part by proceeds from an endowment? N/A

If so:

- What is the amount of the endowment?
- Where is the endowment managed?
- Does the C/I spend only interest earnings?
- Does the C/I spend part of the capital of the endowment?

Contract and Grant Information

	2011-2012	2014-2015	2015-2016
Number of proposals submitted	15	12	6
Number of proposals funded	7	6	4
Proposals Made Jointly with Individuals not Directly associated with the Center / Institute			
Total dollar amount of awards	\$384,983	\$367,966	311,292

- Are any of the contracts or grants multi-year? Yes
- How many years does the Center or Institute have left on any current contract or grant? 2 of the FL DCF projects are ongoing. They renew annually by amendments. 1 project with UMD is also multiyear in final year in 16/17.
- Have any contracts or grants been renewed during this reporting period? If yes, how many? 4

Other Center or Institute Activities

- Have any patents or royalties been generated? If so, please describe.
- Has the Center or Institute applied for a patent that has not yet been granted? If so, please describe.

Comments or additional information: _____

Employment —

University Positions associated with your C/I

	2011-2012	2014-2015	2015-2016
Number of Faculty (FTE)	0.6	2.8	2.75
Number of A&P and USPS positions (FTE)	1	1	1
Total Positions	1.6	3.8	3.75

Student Employment (include graduate and undergraduate)

	2011-2012	2014-2015	2015-2016
Number of research assistants employed (FTE)	11@ .25ea	19@.25ea	11 @ 0.25ea
Number of teaching assistants employed (FTE)			
Number of interns (with stipend or OPS)			

Number of interns (without pay)			
Total student positions	11	19	11

Other Student Financial Benefits (include graduate and undergraduate)

	2011-2012	2011-2012	2014-2015	2014-2015	2015-2016	2015-2016
	Number	\$ Amount	Number	\$ Amount	Number	\$ Amount
Out of state tuition waivers	0	0	3	\$19,844	0	0
Student fellowships						
Scholarships						
Post-doctoral support						
Amount of student travel support						
Amount of registration for student conference attendance						
Other support (specify)						

Comments or additional information: Most waivers were in-state. The Institute does not provide scholarships or other forms of student support.

Research and Extension —

Note: Web-delivered and CD Rom publications are to be counted in these totals.

Publications (in Refereed Journals, Peer-Reviewed Books or Peer-Reviewed Chapters) Do not include those credited to the faculty member's primary academic department that are unrelated to the C/I mission.

	2011-2012	2014-2015	2015-2016
Number of faculty publications	89	66	59
Number of student publications			
Number of publications authored jointly with other faculty at FSU			
Number of publications authored jointly with students in the C/I			
Number of publications authored jointly with faculty at locations other than FSU			

Please have a list of relevant publications available if requested.

Other Publications and Conference Papers None.

	2011-2012	2014-2015	2015-2016
Number of extension or outreach publications			
Number of <u>national</u> conference papers submitted			
Number of <u>national</u> conference			

papers accepted			
Date, Conference and Name of presentation(s)			
Number of <u>regional</u> conference papers submitted			
Number of <u>regional</u> conference papers accepted			
Date, Conference and Name of presentation(s)			

Annual Report

Does the Center or Institute produce an annual report? If so, please have copies available or provide the web link.

Student Publications

	2011-2012	2014-2015	2015-2016
Number of student theses credited to or associated with the C/I			
Number of dissertations			
Number of any other student papers			

Professional Development and Assistance

Consulting

	2011-2012	2014-2015	2015-2016
Number of consulting contracts			
Name of consulting recipient(s)			
Consulting Subject or Topic			
Amount of funding provided through general (not dedicated) funds of the C/I			
Amount of funding obtained through contract in addition to general (not dedicated) C/I funds			

Technical Assistance

	2011-2012	2014-2015	2015-2016
Number of technical assistance sessions or seminars offered			
Name of technical assistance recipient(s)			
Technical Assistance Subject or Topic			
Amount of Funding			

Conferences or Symposia

- How many conferences or symposia has the Center or Institute sponsored or hosted during this reporting period. Please list.

Comments or additional information: _____

Management

- Please provide an organizational chart. N/A
- Is the Center or Institute legislatively created? No
- Does the Center or Institute have an advisory board? How often are meetings held? N/A
Does the board manage the C/I or does it serve in an advisory capacity? Please describe and include a list of current members.
- How long has the director served? 2yrs
- How does the directorship change hands? By Dean appointment
- Are there any issues associated with management transition? No
- If there are multiple sites, how are they administered? Who has final oversight?

Comments or additional information:

The Institute for Social Work Research covers the Research activity that is not under the Institute for Family Violence Studies, Florida Institute for Child Welfare or the Multidisciplinary Center.

Additional Issues

Issues facing the Center or Institute.

Questions for Centers and Institutes (C/I) Review

Mission and C/I activities

1. Please provide contact information, both for management and for budget information.

Name of Center or Institute: **Institute for Family Violence Studies**

Address: 296 Champions Way, Rm 2300 UCC
Tallahassee, FL 32306-2570

Phone: 850-644-6303

Director: Karen Oehme

Director e-mail address: koehme@fsu.edu
Phone: 850-644-6303

Budget and funding contact: DeAnn Scarborough

Contact e-mail address: dscarborough@fsu.edu
Phone: 850-644-5504

Web Link: <http://familyvio.csw.fsu.edu/>

If multidisciplinary, please list departments associated with C/I: Faculty from multiple FSU Colleges work with the IFVS, including Law, Medicine, Communication and Information, and the Dept. of Family and Child Sciences

2. What is the Center's or Institute's mission statement?

The mission of the Institute for Family Violence Studies (IFVS) within Florida State University's College of Social Work is to conduct rigorous research, build comprehensive national trainings, and develop and promote sound public policy to support healthy families and reduce all forms of family violence.

3. Briefly, what activities are consistently performed that move the C/I toward meeting its established mission? This section should also include activities related to meeting the State Board of Governor's mission. The State Board of Governors mission includes the following:

1. Strengthen Quality and Reputation of Academic Programs and Universities
2. Increase Degree Productivity and Program Efficiency
3. Increase the Number of Degrees Awarded in STEM and Other Areas of Strategic Emphasis

4. Strengthen Quality and Reputation of Scholarship, Research and Innovation
5. Increase Research and Commercialization Activity
6. Increase Collaboration and External Support for Research Activity
7. Strengthen Quality and Recognition of Commitment to Community and Business Engagement
8. Increase Levels of Community and Business Engagement
9. Increase Community and Business Workforce

Activities:

The activities of the Institute for Family Violence Studies include:

- Building innovative, national scale research-based training projects for at-risk families and for professionals such as social workers, medical professionals, law enforcement, and others who provide interventions to those families
- Conducting and disseminating important research on all aspects of family violence
- Promoting effective legislative solutions for reducing family violence
- Leading the Clearinghouse on Supervised Visitation with training, technical assistance, and research on child welfare and family court interventions
- Maintaining extensive resources on research related to families, violence, and interventions.
- Evaluating the effectiveness of family violence interventions and developing innovative evidence-informed programs
- Advocating for safe and healthy families in the court system
- Collaborating with state, national, and international organizations that support families
- Mentoring FSU students in a supportive environment and building their research, writing, and leadership skills that translate into success in the workplace.

4. Overall Status

- What is the Center or Institute best known for?

The Institute for Family Violence Studies is best known for its national and international training projects.

Clearinghouse on Supervised Visitation

The longest-standing project of the IFVS is the Clearinghouse on Supervised Visitation, funded by the Florida Department of Children and Families since 1996. Supervised visitation between noncustodial parents and their children occurs when courts determine that unmonitored contact between parent and child endangers the child because of allegations of parental abuse, neglect, mental illness, substance abuse, and domestic violence. Development of Clearinghouse training material has resulted in the Clearinghouse offering the largest collection of supervised visitation training materials for all types of case referrals nationally

(<http://familyvio.csw.fsu.edu/Clearinghouse>). The Clearinghouse also has an international presence, with staff having served on the International Supervised Visitation Network for many years. In addition, staff have served on the U.S. Department of Justice's National Safe Haven Supervised Visitation Guiding Principles Board and the IFVS director has frequently traveled across North America to speak about Clearinghouse projects.

Law Enforcement

The IFVS also maintains The Law Enforcement Families Partnership, which provides online training for officers and conducts research on officer trauma and officer-involved domestic violence (OIDV). OIDV is intimate partner violence perpetrated by a criminal justice officer. The International Association of Chiefs of Police (IACP) developed a Model Policy on OIDV recommending that all officers receive training on the issues (IACP, 2003). Through a partnership with the Verizon Foundation, the IFVS offers the only free online prevention training — the National Prevention Toolkit on Officer-Involved Domestic Violence (<http://nationaltoolkit.csw.fsu.edu>) for all criminal justice officers in the U.S.

Medical Professionals

In 2014 the IFVS developed an interactive, graphic rich online training on domestic violence for medical professionals to provide a free resource for first responders of domestic violence. Funded by the Verizon Foundation (<http://dvmedtraining.csw.fsu.edu>), the interactive training teaches medical personnel the dynamics, sign, symptoms, and impact of intimate partner violence, and provides information on screening patients in a respectful, confidential manner. Used by the FSU College of Nursing to train nursing students on an introduction to domestic violence. Through a partnership with the University of Florida Trauma One, emergency medical services (EMS) personnel are provided with continuing education credits to take the training.

Co-Parenting After Divorce

Divorce education is required by many states prior to parents legally ending their marriage. Through a partnership with the Vandermark Foundation, the IFVS team created a Successful Co-Parenting After Divorce online training that is an approved Florida Parent Education and Family Stabilization Course at the Florida Department of Children and Families. The training also offers free CEUs to lawyers, mental health professionals and social workers so that those professionals who are assisting parents through the divorce project have access to co-parenting training. The course is offered in both English and Spanish, and contains a series of videos and skill building exercises created in conjunction with the FSU College of Communication and Information.

LGBTQ Issues

One of the newest project of the IFVS is the LGBTQ Family Life Project. The project's mission is to conduct research on national issues that affect the lives of sexual and gender minorities, including parenting, child custody, adoption, school

safety, employment, housing, and family dynamics. Through an analysis of appellate court decisions, we have suggested a test to determine whether family courts exhibit anti-gay bias in child custody decisions after the Supreme Court's Obergefell decision legalizing same-sex marriages.

- What is the greatest strength of the Center or Institute?

The greatest strength is our students. The Institute is more than the aggregate of its projects. Its core values include the obligation to mentor students who are interested in family violence issues and the responsibility to participate in community service to inform and ground our research. Undergraduate researchers may require more intensive interaction and training than graduate students, but their college experience is richer when they participate in research.

- What are the most significant challenges facing the Center or Institute?

Funding is the most significant challenge. Student work and faculty affiliates provide the backbone of the IFVS. The director's position is funded 95% by grants, with 5% funded by the College of Social Work. IFVS staff positions are OPS funded solely by grants. The Dean of Social work has funded a new half time OPS position in 2016 to expand the IFVS. There are only two full time employees, the director and an OPS project coordinator. Four other part time OPS staff paid by grants provide computer design, programming, and help desk support for the online databases and trainings.

Funding –

Please provide the source and amount of expenditures from 2011-2012 to 2015-2016, using the following categories. Please round to the nearest dollar.

Expenditures	2011-2012	2014-2015	2015-2016
University (E&G)	\$4,476	0	\$5,998
State (General Revenue Other than E&G)	0	0	0
State (C&G or other funds)	0	0	0
Federal (C&G)	\$188,524	\$130,000	\$131,261
Local (C&G)	0		0
Private / nonprofit organization	\$9,074	\$120,000	\$111,200
Endowment proceeds	0	0	0
Proceeds from patents or royalties	0	0	0
Sales from services or products	0	0	0
Others (specify)	0	0	0
Total expenditures	\$202,074	\$250,000	\$248,409

Endowment Information

Is the C/I supported in whole or in part by proceeds from an endowment?

If so: FSU Foundation

- What is the amount of the endowment? \$86,810
- Where is the endowment managed? FSU Foundation
- Does the C/I spend only interest earnings? Yes.
- Does the C/I spend part of the capital of the endowment? No.

Contract and Grant Information

	2011-2012	2014-2015	2015-2016
Number of proposals submitted	3	3	3
Number of proposals funded	2	2	1
Proposals Made Jointly with Individuals not Directly associated with the Center / Institute			
Total dollar amount of awards	\$450,000	\$495,000	\$245,000

- Are any of the contracts or grants multi-year? Yes
- How many years does the Center or Institute have left on any current contract or grant? One year on DCF Florida Clearinghouse for Supervised Visitation (IFVS is sole source provider)
- Have any contracts or grants been renewed during this reporting period? If yes, how many? DCF Clearinghouse and two foundation projects Verizon Foundation for LEFP project and Vandermark Foundation for Toolkit for Successful Co-Parenting

Other Center or Institute Activities:

- Have any patents or royalties been generated? If so, please describe.
- Has the Center or Institute applied for a patent that has not yet been granted? If so, please describe.

Comments or additional information: _____

Employment —

University Positions associated with your C/I

	2011-2012	2014-2015	2015-2016
Number of Faculty (FTE)	1	1	1
Number of A&P and USPS positions (FTE)	0	1	0
Total Positions	1	2	1

In Year 2016, we added a half time OPS position.

Student Employment (include graduate and undergraduate)

	2011-2012	2014-2015	2015-2016
Number of research assistants employed (FTE)	0	3 (0.75FTE)	5(1.25FTE)
Number of teaching assistants employed (FTE)	0	0	0
Number of interns (with stipend or OPS)	4(1.0FTE)	0	0
Number of interns (without pay)		1	1
Total student positions	4	4	6

Other Student Financial Benefits (include graduate and undergraduate)

	2011-2012	2011-2012	2014-2015	2014-2015	2015-2016	2015-2016
	Number	\$ Amount	Number	\$ Amount	Number	\$ Amount
Out of state tuition waivers	0	0	0	0	0	0
Student fellowships	0	0	0	0	0	0
Scholarships	1	\$500.00	0	0	0	0
Post-doctoral support	0	0	0	0	0	0
Amount of student travel support	0	0	0	0	0	0
Amount of registration for student conference attendance	0	0	0	0	0	0
Other support (specify)	0	0	0	0	0	0

Comments or additional information: The College of Social Work Provides waivers for qualified graduate assistants.

Research and Extension —

Note: Web-delivered and CD Rom publications are to be counted in these totals.

Publications (in Refereed Journals, Peer-Reviewed Books or Peer-Reviewed Chapters)

Do not include those credited to the faculty member's primary academic department that are unrelated to the C/I mission.

	2011-2012	2013-2014	2015-2016
Number of faculty publications	5	6	10
Number of student publications	0	0	0

Number of publications authored jointly with other faculty at FSU	1	2	4
Number of publications authored jointly with students in the C/I	4	1	3
Number of publications authored jointly with faculty at locations other than FSU	2	3	7

Please have a list of relevant publications available if requested.

Other Publications and Conference Papers

	2011-2012	2013-2014	2015-2016
Number of extension or outreach publications	0	0	1
Number of <u>national</u> conference papers submitted	2	5	4
Number of <u>national</u> conference papers accepted	2	5	4
Date, Conference and Name of presentation(s)	- September 2012, 17th Annual International	- September 2014, 19th Annual Conference on Violence,	- October 2016, Presentation at the meeting of Annual

	<p>Conference on Violence, Abuse and Trauma, Alliant International University, San Diego, CA. <i>The National Toolkit on Officer-Involved Domestic Violence</i></p> <p>- September 2011, 16th Annual International Conference on Violence, Abuse and Trauma, IVAT at Alliant International University, San Diego, CA. <i>Florida's Officer-Involved Domestic</i></p>	<p>Abuse, and Trauma, San Diego, CA. <i>Lessons from the National Prevention Toolkit on Officer-Involved Domestic Violence.</i></p> <p>- April 2014, meeting of Council of Governments Meeting, Washington, D.C. <i>New Strategies to Prevent Officer-Involved Domestic Violence.</i></p> <p>- March 2014, 99th Annual Meeting, American Medical Women's Association. <i>Are Medical Professionals Screening for</i></p>	<p>Meeting of the Major Cities Chiefs Association, San Diego, CA. <i>Officer-Involved Domestic Violence: Effects of a Web-Based Training.</i></p> <p>- May 2016, 25th Annual Supervised Visitation Network Conference, Supervised Visitation Network. <i>Successful Co-Parenting After Divorce.</i></p> <p>- May 2015, Annual Supervised Visitation Network Conference, The Supervised Visitation Network, Clearwater Beach, Florida. <i>From Research to</i></p>
--	--	--	---

	<i>c Violence Project</i>	<i>Domestic Violence?</i> - October 2013, Major Cities Chiefs Association Meeting, Major Cities Chiefs Association. <i>Preventing Officer-Involved Domestic Violence.</i> Presentation. - September 2013, 18th Annual International Conference on Violence Abuse and Trauma, Institute on Violence Abuse and Trauma. <i>Screening for Domestic Violence by Medical Professionals.</i>	<i>Practice: Six Protective Factors Strengthen Vulnerable Families.</i> - April 2015, Conference on Sexual Assault, Domestic Violence and Campus Responses, End Violence Against Women International, New Orleans, LA. <i>Domestic Violence Committed by Police Officers</i>
Number of regional	1	2	1

conference papers submitted			
Number of <u>regional</u> conference papers accepted	1	2	1
Date, Conference and Name of presentation(s)	<ul style="list-style-type: none"> - May 2012, 21st Annual Supervised Visitation Network Conference, Supervised Visitation Network, Orlando, Florida. <i>Using Supervised Visitation to Improve Family Economic Wellbeing.</i> 	<ul style="list-style-type: none"> - August 2014, The meeting of Florida Office of the State Court Administrator, Orlando, FL. <i>Domestic Violence: What Florida Mediators Need to Know.</i> - May 2013, 50th Eastern Regional Interstate Child Support Association Annual Conference, Eastern Regional Interstate Child Support Association. <i>Domestic Violence and</i> 	<ul style="list-style-type: none"> - November 2016, New York Conference, Supervised Visitation Network. <i>Protective Factors in Supervised Visitation.</i>

		<i>Supervised Visitation.</i>	
--	--	-------------------------------	--

Annual Report

Does the Center or Institute produce an annual report? No. If so, please have copies available or provide the web link.

Student Publications

	2011-2012	2014-2015	2015-2016
Number of student theses credited to or associated with the C/I	0	0	0
Number of dissertations	0	0	0
Number of any other student papers	1	1	2

Professional Development and Assistance

Consulting N/A

	2011-2012	2014-2015	2015-2016
Number of consulting contracts			
Name of consulting recipient(s)			
Consulting Subject or Topic			
Amount of funding provided through general (not dedicated) funds of the C/I			

Amount of funding obtained through contract in addition to general (not dedicated) C/I funds			
--	--	--	--

Technical Assistance: DCF Clearinghouse on Supervised Visitation

	2011-2012	2014-2015	2015-2016
Number of technical assistance sessions or seminars offered	12	12	14
Name of technical assistance recipient(s)	Supervised visitation programs in Florida	Supervised visitation programs in FL	Supervised Visitation Programs in FL
Technical Assistance Subject or Topic	See website: familyvio.csw.fsu.edu/clearinghouse	Same	Same
Amount of Funding	\$140,000	\$140,000	\$140,000

Conferences or Symposia

- How many conferences or symposia has the Center or Institute sponsored or hosted during this reporting period. Please list.

We have not been funded to host conferences.

Comments or additional information: _____

Management

- Please provide an organizational chart The Institute has the Director as the sole person formally assigned to the Institute. All personnel are grant funded at the Director's discretion. In 2011-2012 the Institute utilized Research Graduate Assistants under the direction of the Institute for Social Work Research.
- Is the Center or Institute legislatively created? No
- Does the Center or Institute have an advisory board? Yes How often are meetings held? Twice a year. Does the board manage the C/I or does it serve in an advisory capacity? Advisory capacity Please describe and include a list of current members.

- How long has the director served? 10 years
- How does the directorship change hands? Appointed by College of Social Work Dean
- Are there any issues associated with management transition? No
- If there are multiple sites, how are they administered? NA Who has final oversight?

Comments or additional information: _____

Additional Issues

Issues facing the Center or Institute