

FLORIDA STATE UNIVERSITY

Centers and Institutes Review 2012

SEPTEMBER 2013

EXECUTIVE SUMMARY

The purpose of this review is to assess the activities of 12 Centers and Institutes at FSU. Two are from the College of Arts & Sciences, one is from the College of Communication & Information and three are from the College of Medicine. The remainder are not housed within a College—five are housed within the Institute of Science and Public Affairs (ISPA) and one is a stand-alone entity.

This review contains the following Centers and Institutes:

- Center for Biomedical and Toxicological Research (CBTR)
- Institute for Cooperative Environmental Research (ICER)
- Florida Center for Prevention Research
- Center for Advancement of Learning and Assessment (CALA)
- Center for Information Management and Educational Services (CIMES)
- Winthrop-King Institute for Contemporary French and Francophone Studies
- Institute on Napoleon & the French Revolution
- Center for Academic and Professional Development (CAPD)
- Information Use Management and Policy Institute
- Center of Excellence for Patient Safety
- Center for Medicine and Public Health
- Center for Strategic Public Health Preparedness

The Centers and Institutes in this year's report cover a wide range of topics of interest, from environmental research to historical research to development of strategies to manage and present information in a meaningful way. Two of the Centers and Institutes in this year's report focus on France and French history. Four of the Centers are involved with research and service related to public health and safety. One of them is dedicated to reducing medical errors and adverse events through research and dissemination of the results and other information through continuing medical education for healthcare professionals. Another works to enhance collaboration between the private medical sector and the public health sector that fosters prevention and improved community health. Yet another of the Centers focuses its efforts on the prevention of substance abuse through county-level prevention coalitions and through the provision of subject matter expertise where needed. The fourth focuses its efforts on preparedness through assessment and evaluation of plans, training, education and technical assistance.

Two of them are working to assist with effective information management and presentation. One accomplishes this through the use of clearinghouses, information technology, web design and architecture. Its partners include the Board of Governors, the US Chamber of Commerce, AT&T and several FSU Colleges. The other works with state and national partners and has assisted local entities to identify broadband needs and worked to improve the success of the Florida Electronic Library in meeting the information needs of Florida residents. Two are centered on environmental contamination, risk assessment and waste management—one within the United States and the other in Europe. One is centered on research which facilitates the development of training and assessment strategies to support successful learning through instructional design, psychometrics, graphic design and web and multimedia development. One is focused on providing outreach and educational opportunities to non-traditional students and the general public.

A detailed survey and assessment was conducted between February 2013 and April 2013. The following information was collected:

- Contact information
- Mission statement
- Activities in support of the mission (the Center or Institute's as well as the Board of Governors mission)
- Strengths and challenges
- Funding
- Benefits to students
- Opportunities for faculty
- Information and assistance to the community
- Specific issues facing the Center or Institute

The Centers and Institutes in this year's report, like the range of activities they conduct, operate under a variety of funding mechanisms. Six of them receive no E&G funding. The other six average between 14 cents and \$63 as a return on their E&G investment. They are funded with a blend of funds from federal, state, local, private sources and endowment proceeds. Two of them are primarily funded through endowment proceeds, two are funded primarily through federal funds, one is funded primarily through sales of services and the last is funded by an approximately even split between state and federal sources.

These Centers and Institutes strengthen the quality and reputation of Florida State, increase degree productivity (including STEM degrees), and strengthen the quality and reputation of scholarship, research and innovation. Their research applications have enhanced partnerships with federal, state and local governments, private companies and the public at large. Nine of the Centers and Institutes are productive and actively engaged in activities that support their mission. One is recommended to go to Inactive

status, one has been recommended for termination, and another has been recommended for termination and reclassification.

DESCRIPTION OF CENTER OR INSTITUTE

CENTER FOR BIOMEDICAL AND TOXICOLOGICAL RESEARCH (CBTR)

Director: Roy Herndon

The mission of the Center for Biomedical and Toxicological Research (CBTR) is to conduct research, provide education and training, and to assist state agencies and local governmental units in Florida in the areas of toxicology, risk assessment, environmental contamination and waste management.

INSTITUTE FOR COOPERATIVE ENVIRONMENTAL RESEARCH (ICER)

Director: Roy Herndon

The mission of the Institute for Cooperative Environmental Research (ICER) is to conduct research, and provide education and training in the areas of environmental technology identification, development, evaluation and deployment in the United States and other regions of the world. The parent organization of the Institute for Cooperative Environmental Research is the Center for Biomedical and Toxicological Research.

FLORIDA CENTER FOR PREVENTION RESEARCH

Director: Steven G. Brooks

The mission of the Florida Center for Prevention Research is to provide innovative research, education, training, and technological solutions to address the challenges of substance abuse prevention and other health and social issues among Florida's population.

CENTER FOR ADVANCEMENT OF LEARNING AND ASSESSMENT (CALA)

Director: Faranak Rohani

CALA's mission is to develop and improve evidence-based assessment procedures that enhance learning. It seeks nontraditional alternatives that effectively and efficiently integrate assessment and instruction, take advantage of technological advancements, involve stakeholders, and inform policy makers and educators. The Center

builds on its research findings to design training and assessment tools that support successful learning.

CENTER FOR INFORMATION MANAGEMENT & EDUCATIONAL SERVICES (CIMES)

Director: Rebecca Augustyniak

CIMES is a multidisciplinary applied research and development center. The Center is committed to leading agencies through the knowledge economy to better serve their target populations through the effective use of information and communication technologies. Its systematic approach to information assets and outreach enables organizations to exceed their strategic and operational goals by transforming complex information into effective communication and learning. CIMES accomplishes its mission by offering a wide variety of customized products and services in the following areas: information management, clearinghouses, knowledge management, information technology (IT), Web design and architecture, instructional design and training, and marketing and product development.

WINTHROP-KING INSTITUTE FOR FRENCH AND FRANCOPHONE STUDIES

Director: Martin Munro

Florida State University's Institute for Contemporary French and Francophone Studies is a center for interdisciplinary scholarship on France and the wider French-speaking world. Its interests have a contemporary focus combined with a keen awareness of the historical forces which have shaped the modern world. Through its program of distinguished guest speakers, visiting professors and conferences, together with undergraduate and graduate scholarships, the Institute offers outstanding opportunities in support of teaching and research in French and Francophone studies. While grounded in French and Francophone studies, it seeks to make new connections with other disciplines, within and beyond F.S.U. As fields of interest grow and diversify, so the Winthrop-King Institute aims to be at the forefront of new developments, and to continue to play a leading role in promoting French and Francophone studies locally, nationally, and internationally.

INSTITUTE ON NAPOLEON AND THE FRENCH REVOLUTION

Director: Rafe Blaufarb

The Institute on Napoleon and the French Revolution (INFR) is dedicated to advancing the historical understanding of the

revolutionary era (1750-1850). It does so primarily by offering graduate degrees (MA and Ph.D.) in this area of history, encouraging innovative archival research and publication, and participating in national and international professional associations of revolutionary-era historians. The Institute also pursues its mission by offering a range of popular undergraduate courses at FSU. Outside of France, the INFR is the only research center and MA/doctoral program specifically focused on the age of Napoleon and the French Revolution.

CENTER FOR ACADEMIC & PROFESSIONAL DEVELOPMENT

Director: Bill Lindner

The mission of the Center for Academic and Professional Development is to extend the resources of the University to promote learning for life. To this end, the Center, through the operation of the FSU Conference Center, provides 200 educational and outreach programs per year. These are often focused on the non-traditional student and the general public.

INFORMATION USE MANAGEMENT AND POLICY INSTITUTE

Director: Charles R. McClure

The mission of the Institute is to develop and implement applied research and policy studies that improve the quality, effectiveness, and productivity of individuals and organizations' use and management of information resources and services. The Institute is especially interested in the social and behavioral aspects regarding access to, the use of, and management of information and information technology.

CENTER OF EXCELLENCE FOR PATIENT SAFETY

Director: Dennis Tsilimingras

The Center of Excellence for Patient Safety was established to promote and conduct innovative research designed to reduce medical errors and adverse events in all venues of care. The Center disseminates scholarly research on patient safety to medical directors, physicians, policymakers, the media, and other organizations interested in improving patient safety and quality of care both locally and nationally. It also provides continuing medical education for healthcare professionals.

CENTER FOR MEDICINE AND PUBLIC HEALTH

Director: Les Beitsch

The Center for Medicine and Public Health is dedicated to the study and enhancement of collaboration between the private medical sector and the public health sector at all levels of practice (federal, state, and local), via research, policy change, and service that fosters prevention and improved community health.

**CENTER FOR STRATEGIC PUBLIC HEALTH
PREPAREDNESS**

Director: Michael P. Smith

The mission of the Center for Strategic Public Health Preparedness is to serve as a resource for the education of public health care workers and the public in the area of public health preparedness. The Center assesses and evaluates public health preparedness, offers training to organizations and provides technical assistance including public health response assistance.

CENTER FOR BIOMEDICAL AND TOXICOLOGICAL RESEARCH (CBTR)

2035 East Paul Dirac Dr.
Suite 226 HMB
Tallahassee, FL 32310

Phone: (850) 645-7912
Director: Dr. Roy C. Herndon
rherndon@fsu.edu
(850) 645-7913
Budget and funding contact: Alan Davis
adavis@fsu.edu
(850) 645-7912
Web site: <http://www.cbtr.fsu.edu>

If multidisciplinary, please list departments associated with C/I.

Institute for Cooperative Environmental Research (ICER)

MISSION AND ACTIVITIES

What is the Center's or Institute's mission statement?

The mission of the Center for Biomedical and Toxicological Research (CBTR) is to conduct research, provide education and training, and to assist state agencies and local governmental units in Florida in the areas of toxicology, risk assessment, environmental contamination and waste management. The CBTR is also the parent organization for the internationally-based research and training conducted by the Institute for Cooperative Environmental Research (ICER).

Briefly, what activities are consistently performed that move the Center/Institute toward meeting its established mission? This section should also include activities related to meeting the State Board of Governor's mission. The State Board of Governors mission includes the following:

1. *Strengthen Quality & Reputation of Academic Programs and Universities*
2. *Increase Degree Productivity and Program Efficiency*
3. *Increase the Number of Degrees Awarded in STEM and Other Areas of Strategic Emphasis*
4. *Strengthen Quality and Reputation of Scholarship, Research and Innovation*
5. *Increase Research and Commercialization Activity*
6. *Increase Collaboration and External Support for Research Activity*
7. *Strengthen Quality and Recognition of Commitment to Community and Business Engagement*
8. *Increase Levels of Community and Business Engagement*
9. *Increase Community and Business Workforce*

Activities:

- a. Student intern selection, support and supervision for the Florida Department of Environmental Protection.

A variety of ongoing services are performed including the identification, appointment and management of technical interns for assigned tasks in the Waste Management Program at the Florida Department of Environmental Protection. These students receive training and familiarization with the regulatory programs, and contribute to the quality and reputation of Florida State University, as well as supporting degree productivity in STEM areas.

- b. Organization, coordination, development of technical training materials for personnel health and safety courses per Florida Department of Environmental Protection contract.

These courses, provided on a regular basis at the specific request of the Florida Department of Environmental Protection by the CBTR staff for 24 years, strengthen the quality and reputation of Florida State University, increase technical collaboration, and contribute technical expertise to the state regulatory and technical community.

- c. Ongoing presentation of technical research at national and international meetings and symposia.

Each year, the CBTR staff prepares, submits, presents and publishes technical papers in the fields of environmental science, toxicology and health risk assessment. These activities strengthen the quality of scholarship and the research reputation of Florida State University, increase technical collaboration with other academic institutions and the business community, and promote community and business engagement due to the focused and practical nature of the research projects conducted by the CBTR.

- d. Development of undergraduate and graduate teaching materials and participation in courses offered in FSU academic departments.

Each academic semester, the CBTR staff provides, at the request of FSU Departmental faculty, lectures and instruction in relevant areas of undergraduate and graduate courses. These activities enhance collaboration, increase degree productivity (specifically in STEM and related areas) and strengthen the quality of Florida State University academic programs.

- e. Interaction with local and state businesses, community groups and media on ongoing basis.

The Center for Biomedical and Toxicological Research staff responds to specific requests from the public and private sectors for information and technical support on issues related to environmental affairs, pollution, air quality, and health risk, as well as other areas. These interactions strengthen the quality and reputation of Florida State University, increase technical collaboration and contribute technical expertise to the State regulatory and technical communities.

What is the Center or Institute best known for?

The Center for Biomedical and Toxicological Research is well-known for research and training expertise in toxicology, human health and environmental risk assessment and various aspects of waste management, including recycling and resource reuse.

What is the greatest strength of the Center or Institute?

The greatest strength of the Center for Biomedical and Toxicological Research is the development, production and publication of quality technical analyses, assessments and training in toxicology, human health, health & safety, environmental risk assessment, waste management, recycling and resource reuse. These activities are conducted on a firm scientific foundation, with specific attention to staying within budget, while maintaining the necessary schedules for the research and training activities of the CBTR.

What are the most significant challenges facing the Center or Institute?

Ongoing limitations and competition for funding by state and federal programs, as well as private organizations, will continue to be challenging to the maintenance and continuation of the research and training programs of the CBTR.

FUNDING (2007–2008 THROUGH 2011–2012)

What is the source and amount of expenditures from 2007-2008 to 2011-2012 for the Center/Institute using the following categories?

Expenditures	2007–2008	2010–2011	2011–2012
University (E&G)	\$276,238	\$426,513	\$422,229
State (General Revenue Other than E&G)	0	0	0
State (C&G)	\$40,275	\$41,242	0
Federal	\$1,516	\$0	\$26,389
Local	0	0	0
Private / nonprofit organization	\$14,680	\$42,938	0
Endowment proceeds	0	0	0
Proceeds from patents or royalties	0	0	0
Sales from services or products	0	\$6,513	\$33,023
Others (specify)	0	0	0
Total expenditures	\$332,809	\$517,205	\$481,641

ENDOWMENT INFORMATION

Is the Center/Institute supported in whole or in part by proceeds from an endowment? No

What is the amount of the endowment? NA

Where is the endowment managed? NA

Does the C/I spend only interest earnings? NA

Does the C/I spend part of the capital of the endowment? NA

CONTRACT AND GRANT INFORMATION

	2007–2008	2010–2011	2011–2012
Number of proposals submitted	1	3	1
Number of proposals funded	1	0	2
Proposals Made Jointly with Individuals not Directly associated with the Center / Institute	0	0	0
Total amount of awards	\$46,935	\$0	\$91,448

****NOTE:** Proposals submitted during a fiscal year are not necessarily funded in the same fiscal year or are awards and/or transfers from an existing award. Therefore, the number of proposals funded and total amount of awards includes data on all proposal funding received for this period of time.

Were any of the contracts or grants multi-year? Yes

How many years does the Center or Institute have left on any current contract or grant? 1

Have any contracts or grants been renewed in the reporting period and, if so, how many? No

OTHER CENTER OR INSTITUTE ACTIVITIES

Has the Center/Institute generated any patents or royalties? No

Has the Center or Institute applied for a patent that has not yet been granted? If so, please describe. No

EMPLOYMENT
(2007–2008 THROUGH 2011–2012)

UNIVERSITY POSITIONS ASSOCIATED WITH THE C/I:

	2007–2008	2010–2011	2011–2012
Number of Faculty (FTE)	2.22	2	1.49
Number of A&P and USPS positions (FTE)	.79	1	1
Total Positions	3.01	3	2.49

STUDENT EMPLOYMENT (INCLUDE GRADUATE AND UNDERGRADUATE):

	2007–2008	2010–2011	2011–2012
Number of research assistants employed (FTE)	0.46	1.03	0.30
Number of teaching assistants employed (FTE)	0	0	0
Number of interns (with stipend or OPS)	0	0	0
Number of interns (without pay)	0	0	0
Total student positions	0.46	1.03	0.30

OTHER STUDENT FINANCIAL BENEFITS
(INCLUDING GRADUATE AND UNDERGRADUATE):

	2007–2008	2010–2011	2011–2012
	Number/Amount	Number/Amount	Number/Amount
Out of state tuition waivers	0/0	0/0	0/0
Student fellowships	0/0	0/0	0/0
Scholarships	0/0	0/0	0/0
Post-doctoral support	0/0	0/0	0/0
Amt of student travel support	0/0	0/0	0/0
Amt of registration for student conference attendance	0/0	0/0	0/0
Other support	0/0	0/0	0/0

Comments or additional information

RESEARCH AND EXTENSION (2007–2008 THROUGH 2011–2012)

Note: web-delivered and CD-Rom publications are counted in these totals.

PUBLICATIONS IN REFEREED JOURNALS

Note: Do not include those credited to a faculty member's primary academic department that are unrelated to the C/I mission.

	2007–2008	2010–2011	2011–2012
Number of faculty publications	3	3	4
Number of student publications	0	0	0
Number of publications authored jointly with other faculty at FSU	0	0	0
Number of publications authored jointly with students in the C/I	0	0	0
Number of publications authored jointly with faculty at locations other than FSU	3	2	4

Please have a list of relevant publications available if requested.

OTHER PUBLICATIONS AND CONFERENCE PAPERS

	2007–2008	2010–2011	2011–2012
Number of extension or outreach publications	0	0	0
Number of national conference papers submitted	5	1	1
Number of national conference papers accepted	5	1	1
<i>DATE, CONFERENCE AND NAME OF PRESENTATION(S)</i>	*	*	*
Number of regional conference papers submitted	4	3	2
Number of regional conference papers accepted	4	3	2
<i>DATE, CONFERENCE AND NAME OF PRESENTATION(S)</i>	*	*	*

*Available upon request

ANNUAL REPORT

Does the Center or Institute produce an annual report? If so, please have copies available or provide the web link.

No

STUDENT PUBLICATIONS

	2007–2008	2010–2011	2011–2012
Number of student theses credited to or associated with the C/I	0	0	0
Number of dissertations	0	0	0
Number of any other student papers	0	0	0

PROFESSIONAL DEVELOPMENT AND ASSISTANCE

Consulting

	2007–2008	2010–2011	2011–2012
Number of consulting contracts	0	0	0
Name of consulting recipient(s)	N/A	N/A	N/A
Consulting Subject or Topic	N/A	N/A	N/A
Amount of funding provided through general funds of the C/I	0	0	0
Amount of funding obtained through contract in addition to general C/I funds	0	0	0

Technical Assistance

	2007–2008	2010–2011	2011–2012
Number of technical assistance sessions or seminars offered	1	0	2
Name of technical assistance recipient(s)	*	N/A	*
Technical Assistance Subject or Topic	**	N/A	**
Amount of Funding	\$15,000	N/A	\$15,000

*Florida Department of Environmental Protection (FDEP)

**OSHA training and other RCRA related activities

CONFERENCES OR SYMPOSIA

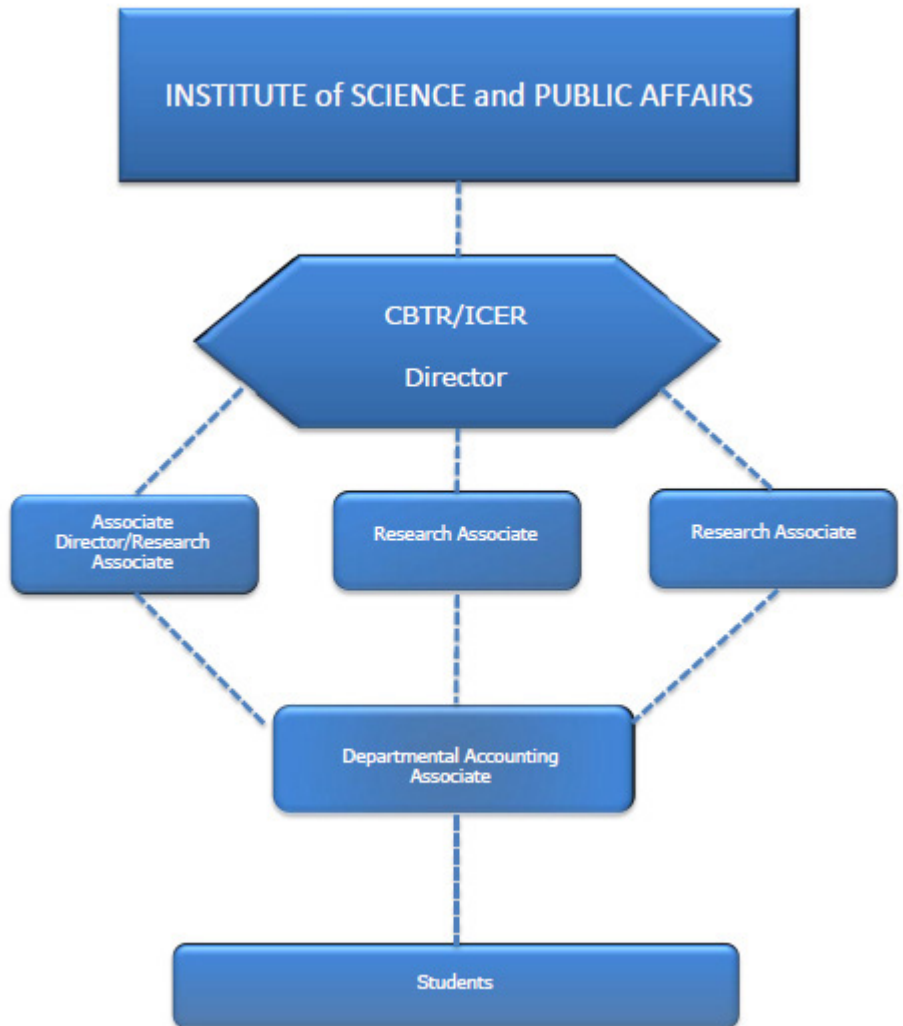
How many conferences or symposia has the Center or Institute sponsored or hosted during this reporting period? Please list.

None

Comments or additional information

MANAGEMENT

Center/Institute organizational chart



Is the Center or Institute legislatively created?

No

Does the Center/Institute have an advisory board?

No

How often are meetings held?

N/A

Does the board manage the C/I or does it serve in an advisory capacity?

N/A

Please describe and include a list of current members.

N/A

<i>How long has the Center/Institute director served?</i>	37 years
<i>How does the Center/Institute directorship change?</i>	The directorship changes through FSU's standard hiring process, with the Institute director's immediate supervisor, currently Dr. Stephen Hodge, Interim Director of the Institute of Science and Public Affairs, making the hiring decision.
<i>Are there other issues associated with management transition?</i>	No
<i>If there are multiple sites, how are they administered? Who has the final oversight?</i>	N/A
<i>Comments or additional information</i>	

ADDITIONAL ISSUES

<i>Issues facing the Center or Institute</i>	Ongoing limitations and competition for funding by state and federal programs, as well as private organizations, will continue to be challenging to the maintenance and continuation of CBTR research and training programs. Providing high quality technical support and training, on time and within budget, will remain the principal goals for all of the CBTR's activities.
--	--

OVERALL EVALUATION

- ✓ The Center for Biomedical and Toxicological Research (CBTR) is meeting its mission of conducting research, providing education and training, and assisting state agencies and others in the areas of toxicology, risk assessment, environmental contamination and waste management. CBTR organizes, coordinates and develops technical training materials for the Florida Department of Environmental Protection; prepares, submits, presents and publishes technical papers both nationally and internationally in the fields of environmental science, toxicology and health risk assessment; and responds to specific requests from the public and private sectors for information and technical support on issues related to environmental affairs, pollution, air quality, and health risk.
- ✓ The return on E&G investment is 1:.14. That is, for each dollar invested, a return of \$0.14 is realized. The ROI has been much higher in past years. The Center is recovering after loss of funding from United States Department of Education.
- ✓ The work of the CBTR should continue. It provides assistance and expertise to state agencies and to FSU students through internships with the Florida Department of Environmental Protection and through the development of materials and participation in classes for both undergraduate and graduate students at FSU. Federal contracts (such as with OSHA) are also part of the Center's activities. CBTR is involved on a continuing basis in presentations at national and international conferences and meetings. These activities enhance collaboration, increase degree productivity (specifically in STEM and related areas) and strengthen the quality of and reputation of Florida State University academic programs.
- ✓ There is no need to change its mission or organizational structure.
- ✓ CBTR is funded primarily through E&G. It, like many Centers and Institutes, faces fiscal challenges in these economic times. Their reputation assists them in obtaining funding from other sources such as a long-standing contract with the Florida Department of Environmental Protection and other contracts with the federal government. It is expected this funding will continue to support the activities of CBTR.
- ✓ No change in classification is needed.
- ✓ Retain active status and diversify proposed portfolio.

INSTITUTE FOR COOPERATIVE ENVIRONMENTAL RESEARCH (ICER)

2035 East Paul Dirac Dr.
Suite 226 HMB
Tallahassee, FL 32310

Phone: (850) 645-7912
Director: Dr. Roy C. Herndon
rherndon@fsu.edu
(850) 645-7913
Budget and funding contact: Alan Davis
adavis@fsu.edu
(850) 645-7912
Web site: <http://www.cbtr.fsu.edu>

If multidisciplinary, please list departments associated with C/I.

The parent organization of the Institute for Cooperative Environmental Research (ICER) is the Center for Biomedical and Toxicological Research (CBTR).

NOTE: The following Centers, previously established under ICER, were terminated in February 2013:

- Czech/American Joint Center for Environmental Research;
- Hungarian/American Joint Center for Environmental Research;
- Polish/American Joint Center for Environmental Research; and
- Russian/American Joint Center for Environmental Research.

MISSION AND ACTIVITIES

What is the Center's or Institute's mission statement?

The mission of the Institute for Cooperative Environmental Research (ICER) is to conduct research, and provide education and training in the areas of environmental technology identification, development, evaluation and deployment in the United States and other regions of the world. The parent organization of the Institute for Cooperative Environmental Research is the Center for Biomedical and Toxicological Research.

Briefly, what activities are consistently performed that move the Center/Institute toward meeting its established mission? This section should also include activities related to meeting the State Board of Governor's mission. The State Board of Governors mission includes the following:

- 1. Strengthen Quality & Reputation of Academic Programs and Universities*
- 2. Increase Degree Productivity and Program Efficiency*
- 3. Increase the Number of Degrees Awarded in STEM and Other Areas of Strategic Emphasis*
- 4. Strengthen Quality and Reputation of Scholarship, Research and Innovation*
- 5. Increase Research and Commercialization Activity*
- 6. Increase Collaboration and External Support for Research Activity*
- 7. Strengthen Quality and Recognition of Commitment to Community and Business Engagement*
- 8. Increase Levels of Community and Business Engagement*
- 9. Increase Community and Business Workforce*

What is the Center or Institute best known for?

What is the greatest strength of the Center or Institute?

What are the most significant challenges facing the Center or Institute?

Activities: N/A

No international activities have been conducted by the Institute for Cooperative Environmental Research since 2006-2007.

The Institute for Cooperative Environmental Research is best known for conducting a series of international symposia on environmental contamination in Central and Eastern Europe and conducting international research projects in Poland, Hungary and the Czech Republic.

The greatest strength of the Institute for Cooperative Environmental Research is its experience in writing and implementing contracts between U.S. organizations and institutions in Central and Eastern Europe, and conducting research projects and conferences in Central and Eastern Europe.

The most significant challenge facing the Institute for Cooperative Environmental Research is the ongoing limitation and competition for funding by federal programs, as well as private organizations, for international environmental projects.

FUNDING (2007–2008 THROUGH 2011–2012)

What is the source and amount of expenditures from 2007-2008 to 2011-2012 for the Center/Institute using the following categories?

Expenditures	2007–2008	2010–2011	2011–2012
University (E&G)	0	0	0
State (General Revenue Other than E&G)	0	0	0
State (C&G)	0	0	0
Federal	0	0	0
Local	0	0	0
Private / nonprofit organization	0	0	0
Endowment proceeds	0	0	0
Proceeds from patents or royalties	0	0	0
Sales from services or products	0	0	0
Others (specify)	0	0	0
Total expenditures	0	0	0

ENDOWMENT INFORMATION

Is the Center/Institute supported in whole or in part by proceeds from an endowment? No

What is the amount of the endowment? NA

Where is the endowment managed? NA

Does the C/I spend only interest earnings? NA

Does the C/I spend part of the capital of the endowment? NA

CONTRACT AND GRANT INFORMATION

	2007–2008	2010–2011	2011–2012
Number of proposals submitted	0	0	0
Number of proposals funded	0	0	0
Proposals Made Jointly with Individuals not Directly associated with the Center / Institute	0	0	0
Total amount of awards	0	0	0

****NOTE:** Proposals submitted during a fiscal year are not necessarily funded in the same fiscal year or are awards and/or transfers from an existing award. Therefore, the number of proposals funded and total amount of awards includes data on all proposal funding received for this period of time.

Were any of the contracts or grants multi-year? N/A

How many years does the Center or Institute have left on any current contract or grant? N/A

Have any contracts or grants been renewed in the reporting period and, if so, how many? N/A

OTHER CENTER OR INSTITUTE ACTIVITIES

Has the Center/Institute generated any patents or royalties? No

Has the Center or Institute applied for a patent that has not yet been granted? If so, please describe. No

Comments or additional information No international activities have been conducted by the Institute for Cooperative Environmental Research since 2006-2007.

EMPLOYMENT
(2007–2008 THROUGH 2011–2012)

UNIVERSITY POSITIONS ASSOCIATED WITH THE C/I:

	2007–2008	2010–2011	2011–2012
Number of Faculty (FTE)	0	0	0
Number of A&P and USPS positions (FTE)	0	0	0
Total Positions	0	0	0

STUDENT EMPLOYMENT (INCLUDE GRADUATE AND UNDERGRADUATE):

	2007–2008	2010–2011	2011–2012
Number of research assistants employed (FTE)	0	0	0
Number of teaching assistants employed (FTE)	0	0	0
Number of interns (with stipend or OPS)	0	0	0
Number of interns (without pay)	0	0	0
Total student positions	0	0	0

OTHER STUDENT FINANCIAL BENEFITS
(INCLUDING GRADUATE AND UNDERGRADUATE):

	2007–2008 Number/Amount	2010–2011 Number/Amount	2011–2012 Number/Amount
Out of state tuition waivers	0/0	0/0	0/0
Student fellowships	0/0	0/0	0/0
Scholarships	0/0	0/0	0/0
Post-doctoral support	0/0	0/0	0/0
Amt of student travel support	0/0	0/0	0/0
Amt of registration for student conference attendance	0/0	0/0	0/0
Other support	0/0	0/0	0/0

Comments or additional information

No international activities have been conducted by the Institute for Cooperative Environmental Research since 2006-2007.

RESEARCH AND EXTENSION (2007–2008 THROUGH 2011–2012)

Note: web-delivered and CD-Rom publications are counted in these totals.

PUBLICATIONS IN REFEREED JOURNALS

Note: Do not include those credited to a faculty member's primary academic department that are unrelated to the C/I mission.

	2007–2008	2010–2011	2011–2012
Number of faculty publications	0	0	0
Number of student publications	0	0	0
Number of publications authored jointly with other faculty at FSU	0	0	0
Number of publications authored jointly with students in the C/I	0	0	0
Number of publications authored jointly with faculty at locations other than FSU	0	0	0

Please have a list of relevant publications available if requested.

OTHER PUBLICATIONS AND CONFERENCE PAPERS

	2007–2008	2010–2011	2011–2012
Number of extension or outreach publications	0	0	0
Number of national conference papers submitted	0	0	0
Number of national conference papers accepted	0	0	0
<i>DATE, CONFERENCE AND NAME OF PRESENTATION(S)</i>	0	0	0
Number of regional conference papers submitted	0	0	0
Number of regional conference papers accepted	0	0	0
<i>DATE, CONFERENCE AND NAME OF PRESENTATION(S)</i>	0	0	0

ANNUAL REPORT

Does the Center or Institute produce an annual report? If so, please have copies available or provide the web link.

No

STUDENT PUBLICATIONS

	2007–2008	2010–2011	2011–2012
Number of student theses credited to or associated with the C/I	0	0	0
Number of dissertations	0	0	0
Number of any other student papers	0	0	0

PROFESSIONAL DEVELOPMENT AND ASSISTANCE

Consulting

	2007–2008	2010–2011	2011–2012
Number of consulting contracts	0	0	0
Name of consulting recipient(s)	N/A	N/A	N/A
Consulting Subject or Topic	N/A	N/A	N/A
Amount of funding provided through general funds of the C/I	0	0	0
Amount of funding obtained through contract in addition to general C/I funds	0	0	0

Technical Assistance

	2007–2008	2010–2011	2011–2012
Number of technical assistance sessions or seminars offered	0	0	0
Name of technical assistance recipient(s)	N/A	N/A	N/A
Technical Assistance Subject or Topic	N/A	N/A	N/A
Amount of Funding	0	0	0

CONFERENCES OR SYMPOSIA

How many conferences or symposia has the Center or Institute sponsored or hosted during this reporting period? Please list.

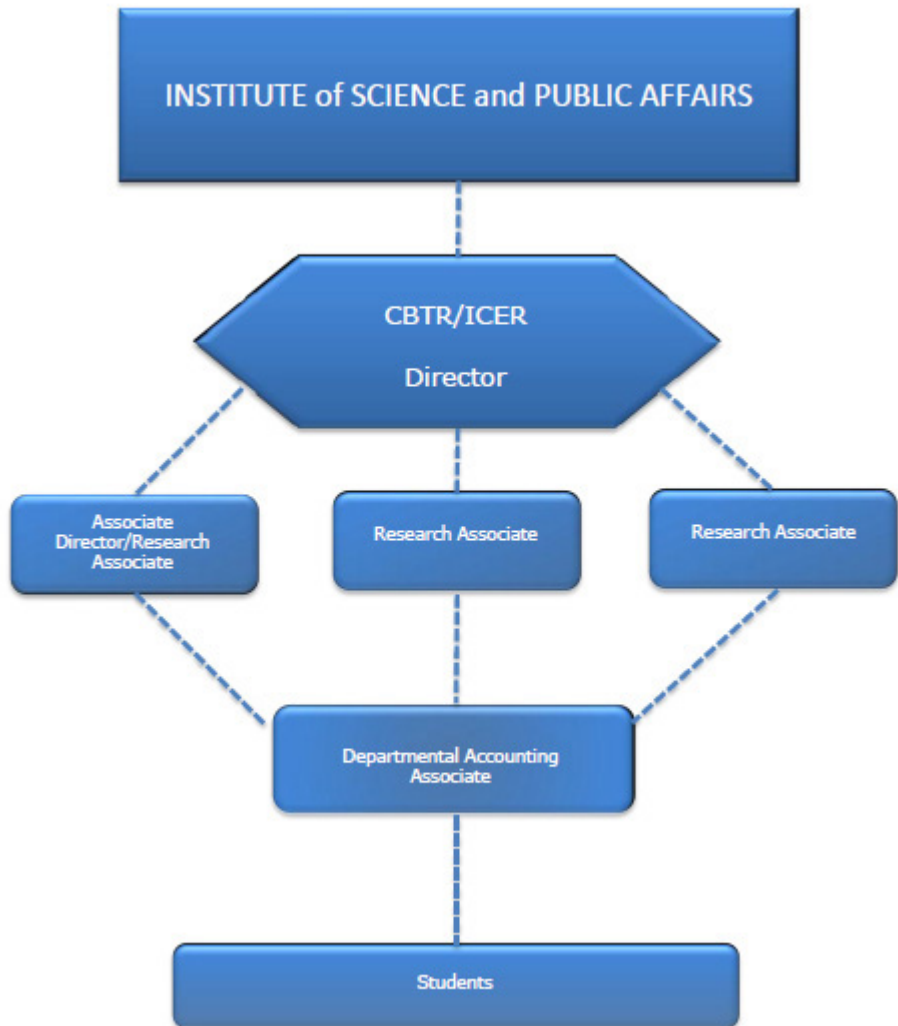
None

Comments or additional information

No international activities have been conducted by the Institute of Cooperative Environmental Research since 2006-2007.

MANAGEMENT

Center/Institute organizational chart



Note: The Center for Biomedical & Toxicological Research (CBTR) is the parent organization of the Institute for Cooperative Environmental Research (ICER).

Is the Center or Institute legislatively created? No

Does the Center/Institute have an advisory board? No

How often are meetings held? N/A

Does the board manage the C/I or does it serve in an advisory capacity? N/A

Please describe and include a list of current members. N/A

<i>How long has the Center/Institute director served?</i>	20 years
<i>How does the Center/Institute directorship change?</i>	The directorship changes through FSU's standard hiring process, with the Institute director's immediate supervisor, currently Dr. Stephen Hodge, Interim Director of the Institute of Science and Public Affairs, making the hiring decision.
<i>Are there other issues associated with management transition?</i>	No
<i>If there are multiple sites, how are they administered? Who has the final oversight?</i>	N/A
<i>Comments or additional information</i>	No international activities have been conducted by the Institute for Cooperative Environmental Research since 2006-2007.

ADDITIONAL ISSUES

<i>Issues facing the Center or Institute</i>	<p>Significantly reduced funding for international environmental projects by federal programs and private organizations.</p> <p>The Center for Biomedical and Toxicological Research (CBTR) is the primary administrative unit used for the research and training activities in the areas of toxicology and risk assessment in the US. Several years ago, Department of Energy (DOE) was directly supporting our international activities in Central and Eastern Europe and Russia. ICER was used to develop and conduct cooperative environmental projects in Poland, The Czech Republic, Hungary and other Central and Eastern European countries. The research and training activities that were conducted primarily in the US were done under the CBTR unit.</p> <p>Once the DOE cooperative funding ended most of our activities were centered in the US and new sources of funding (through federal or private means) for the international aspects of our program have not been secured.</p>
--	---

OVERALL EVALUATION

- ✓ The mission of the Institute for Cooperative Environmental Research (ICER) is to conduct research, and provide education and training in the areas of environmental technology identification, development, evaluation and deployment in the United States and other regions of the world.
- ✓ There are no E&G expenditures so a return on E&G investment is not applicable. Personnel overlap with another center and this unit exists to realize opportunities as they arise.
- ✓ Due to lack of funding, no activities are reported.
- ✓ No change in mission or administrative structure is needed.
- ✓ While no funds are currently available for ICER, the CBTR continues to search for future funding of the Institute through the use of funding resource searchable databases [i.e. Grants.gov, GrantFoward, InfoEd.Spin]
- ✓ No change in classification is needed.
- ✓ Recommend inactive status until funding is obtained; at that time, recommend reactivation of the Institute for Cooperative Environmental Research.

FLORIDA CENTER FOR PREVENTION RESEARCH (FCPR)

3200 Commonwealth Blvd.
Suite 1
Tallahassee, FL 32303

Phone: (850) 644-3016
Director: Steven G. Brooks
sbrooks@fsu.edu
(850) 644-3016
Budget and funding contact: Lee Howell
rlh02@my.fsu.edu
(850) 644-0842
Web site: fcpr.fsu.edu

*If multidisciplinary, please list
departments associated with C/I.*

N/A

MISSION AND ACTIVITIES

*What is the Center's or Institute's
mission statement?*

The mission of the Florida Center for Prevention Research is to provide innovative research, education, training, and technological solutions to address the challenges of substance abuse prevention and other health and social issues among Florida's population.

Briefly, what activities are consistently performed that move the Center/Institute toward meeting its established mission? This section should also include activities related to meeting the State Board of Governor's mission. The State Board of Governors mission includes the following:

- 1. Strengthen Quality & Reputation of Academic Programs and Universities*
- 2. Increase Degree Productivity and Program Efficiency*
- 3. Increase the Number of Degrees Awarded in STEM and Other Areas of Strategic Emphasis*
- 4. Strengthen Quality and Reputation of Scholarship, Research and Innovation*
- 5. Increase Research and Commercialization Activity*
- 6. Increase Collaboration and External Support for Research Activity*
- 7. Strengthen Quality and Recognition of Commitment to Community and Business Engagement*
- 8. Increase Levels of Community and Business Engagement*
- 9. Increase Community and Business Workforce*

Activities:

- a. Program administration
- b. Instructional development
- c. Social Norms research
- d. Program evaluation
- e. Web-based application development
- f. Web site design and development
- g. Graphic design
- h. Training and workshops

What is the Center or Institute best known for?

The Center is probably best known for its support of State-wide substance abuse prevention efforts, to include sixty-seven substance abuse prevention coalitions throughout the State from 2003 – 2012. The Center has also served as a Statewide subject matter expert in the deployment of the social norms model to reduce alcohol abuse and sexual violence in 27 high schools, 22 middle schools and on the FSU campus.

What is the greatest strength of the Center or Institute?

Perhaps the Center's greatest strength is its ability to adapt its mission and subject matter expertise, where needed, to accommodate opportunities outside the scope of prevention. This strength has enabled the Center to weather the significant challenges noted below

What are the most significant challenges facing the Center or Institute?

The greatest challenge facing the Center is one of fiscal survivability in an environment of reduced State and Federal funding directed at prevention. During the past three years the number of State and Federal funded grants has greatly diminished, resulting in the necessity to reduce staff FTE, or eliminate positions altogether.

FUNDING (2007–2008 THROUGH 2011–2012)

What is the source and amount of expenditures from 2007-2008 to 2011-2012 for the Center/Institute using the following categories?

Expenditures	2007–2008	2010–2011	2011–2012
University (E&G)	\$34,760	\$31,267	\$27,563
State (General Revenue Other than E&G)	0	0	0
State (C&G)	\$326,790	\$343,081	\$425,249
Federal	\$2,705,968	\$2,890,333	\$1,107,645
Local	\$326,111	\$68,539	\$10,169
Private / nonprofit organization	\$61,608	\$39,956	\$192,018
Endowment proceeds	0	0	0
Proceeds from patents or royalties	0	0	0
Sales from services or products	0	0	0
Others (specify)	0	0	0
Total expenditures	\$3,455,237	\$3,373,176	\$1,762,644

ENDOWMENT INFORMATION

Is the Center/Institute supported in whole or in part by proceeds from an endowment? No

What is the amount of the endowment? NA

Where is the endowment managed? NA

Does the C/I spend only interest earnings? NA

Does the C/I spend part of the capital of the endowment? NA

CONTRACT AND GRANT INFORMATION

	2007–2008	2010–2011	2011–2012
Number of proposals submitted	20	13	8
Number of proposals funded	19	22	11
Proposals Made Jointly with Individuals not Directly associated with the Center / Institute	2	5	0
Total amount of awards	\$5,431,930	\$3,141,179	\$896,222

****NOTE:** Proposals submitted during a fiscal year are not necessarily funded in the same fiscal year or are awards and/or transfers from an existing award. Therefore, the number of proposals funded and total amount of awards includes data on all proposal funding received for this period of time.

Were any of the contracts or grants multi-year? Yes

How many years does the Center or Institute have left on any current contract or grant? 1

Have any contracts or grants been renewed in the reporting period and, if so, how many? Yes, 21

OTHER CENTER OR INSTITUTE ACTIVITIES

Has the Center/Institute generated any patents or royalties?

Yes. Variable Height Information Center – U.S. Patent Number 12/229,201 Filed 08/12/2008. This invention relates to a kiosk that will be field installed and capable of allowing a person to interact with a program, such as the Medicaid program, or communicate directly with a counselor for the Medicaid program, so that the person may enroll, change health plans, review benefits, etc., within the program from a remote location.

Has the Center or Institute applied for a patent that has not yet been granted? If so, please describe.

Yes. Novel Peak Flow Meter (PFM) - Provisional – Filed 06/14/2012. This PFM is a data input device that measures an individual's pulmonary function level with a positive displacement device. The PFM must be coupled with a smart phone and will record the persons peak flow as a result of a positive displacement device. Uses include, determining pre and post flow after taking medication or a breathing treatment, alerting a patient's primary care physician if the peak flow indicates that a medical intervention is required and, monitoring the progression of COPD to determine if other types of medications or treatments are more effective in disease treatment.

EMPLOYMENT (2007–2008 THROUGH 2011–2012)

UNIVERSITY POSITIONS ASSOCIATED WITH THE C/I:

	2007–2008	2010–2011	2011–2012
Number of Faculty (FTE)	3.69	3	3.52
Number of A&P and USPS positions (FTE)	5.32	6.06	6
Total Positions	9.01	9.06	9.52

STUDENT EMPLOYMENT (INCLUDE GRADUATE AND UNDERGRADUATE):

	2007–2008	2010–2011	2011–2012
Number of research assistants employed (FTE)	.97	.24	.73
Number of teaching assistants employed (FTE)	0	0	0
Number of interns (with stipend or OPS)	0	0	0
Number of interns (without pay)	0	0	0
Total student positions	.97	.24	.73

**OTHER STUDENT FINANCIAL BENEFITS
(INCLUDING GRADUATE AND UNDERGRADUATE):**

	2007–2008	2010–2011	2011–2012
	Number/Amount	Number/Amount	Number/Amount
Out of state tuition waivers	0/0	0/0	0/0
Student fellowships	0/0	0/0	0/0
Scholarships	0/0	0/0	0/0
Post-doctoral support	0/0	0/0	0/0
Amt of student travel support	0/0	0/0	0/0
Amt of registration for student conference attendance	0/0	0/0	0/0
Other support	0/0	0/0	0/0

Comments or additional information

**RESEARCH AND EXTENSION
(2007–2008 THROUGH 2011–2012)**

Note: web-delivered and CD-Rom publications are counted in these totals.

PUBLICATIONS IN REFEREED JOURNALS

Note: Do not include those credited to a faculty member's primary academic department that are unrelated to the C/I mission.

	2007–2008	2010–2011	2011–2012
Number of faculty publications	0	0	0
Number of student publications	0	0	0
Number of publications authored jointly with other faculty at FSU	0	0	0
Number of publications authored jointly with students in the C/I	0	0	0
Number of publications authored jointly with faculty at locations other than FSU	0	0	0

Please have a list of relevant publications available if requested.

OTHER PUBLICATIONS AND CONFERENCE PAPERS

	2007–2008	2010–2011	2011–2012
Number of extension or outreach publications	0	0	0
Number of national conference papers submitted	2	1	0
Number of national conference papers accepted	2	1	0
<i>DATE, CONFERENCE AND NAME OF PRESENTATION(S)</i>	*	*	0
Number of regional conference papers submitted	0	2	0
Number of regional conference papers accepted	0	2	0
<i>DATE, CONFERENCE AND NAME OF PRESENTATION(S)</i>	0	**	0

*2007-2008: 07/16/07; National Conference on the Social Norms Approach; Reducing Florida's Panhandle Teenage Alcohol Abuse

01/15/08; GRAA, 9th National Technical Assistance Conference; Opportunities and Challenges in Rural Prevention

2010-2011: 07/12/10; National Conference on the Social Norms Approach; A Social Norms Approach to Sexual Violence Prevention at FSU

** 2010-2011: 09/30/10; Florida Statewide Prevention Conference; Alcohol Reduction Strategies Used in 15 NE Florida Middle Schools

06/6/11; Florida Statewide Prevention Conference; Application of the Social Norms Approach as an Alcohol Prevention Strategy

ANNUAL REPORT

Does the Center or Institute produce an annual report? If so, please have copies available or provide the web link.

No

STUDENT PUBLICATIONS

	2007–2008	2010–2011	2011–2012
Number of student theses credited to or associated with the C/I	0	0	0
Number of dissertations	0	0	0
Number of any other student papers	0	0	0

PROFESSIONAL DEVELOPMENT AND ASSISTANCE

Consulting

	2007–2008	2010–2011	2011–2012
Number of consulting contracts	0	0	0
Name of consulting recipient(s)	N/A	N/A	N/A
Consulting Subject or Topic	N/A	N/A	N/A
Amount of funding provided through general funds of the C/I	0	0	0
Amount of funding obtained through contract in addition to general C/I funds	0	0	0

Technical Assistance

	2007–2008	2010–2011	2011–2012
Number of technical assistance sessions or seminars offered	0	0	0
Name of technical assistance recipient(s)	N/A	N/A	N/A
Technical Assistance Subject or Topic	N/A	N/A	N/A
Amount of Funding	0	0	0

CONFERENCES OR SYMPOSIA

How many conferences or symposia has the Center or Institute sponsored or hosted during this reporting period? Please list.

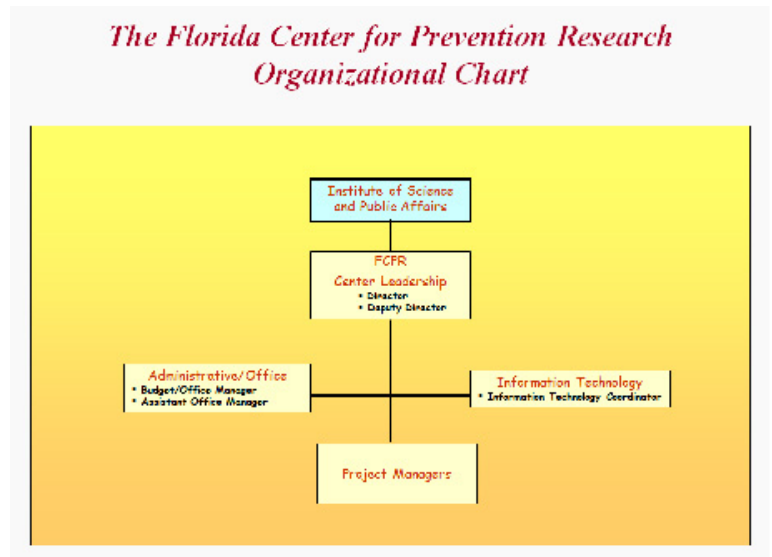
Five

- 2010 Bio Florida 13th Annual Conference – Bio Science Track
- 2011 Bio Florida 14th Annual Conference – Bio Science Track
- 2012 Bio Florida 15th Annual Conference – Bio Science Track
- Phase 1 Health Disparities Research for Florida
- Economics of Disease Prioritization for Incremental Population Health Improvements

Comments or additional information

MANAGEMENT

Center/Institute organizational chart



Is the Center or Institute legislatively created?

No

Does the Center/Institute have an advisory board?

No

How often are meetings held?

N/A

Does the board manage the C/I or does it serve in an advisory capacity?

N/A

Please describe and include a list of current members.

N/A

<i>How long has the Center/Institute director served?</i>	Six years
<i>How does the Center/Institute directorship change?</i>	The directorship changes through FSU's standard hiring process, with the Institute director's immediate supervisor, currently Dr. Stephen Hodge, Interim Director of the Institute of Science and Public Affairs, making the hiring decision.
<i>Are there other issues associated with management transition?</i>	No
<i>If there are multiple sites, how are they administered? Who has the final oversight?</i>	N/A
<i>Comments or additional information</i>	

ADDITIONAL ISSUES

<i>Issues facing the Center or Institute</i>	None
--	------

OVERALL EVALUATION

- ✓ The Florida Center for Prevention Research is meeting its mission of providing innovative research, education, training, and technological solutions to address the challenges of substance abuse prevention and other health and social issues among Florida's population. Its activities include: support of statewide substance abuse prevention efforts, serving as a statewide subject matter expert on reducing alcohol abuse and sexual violence in schools and universities, developing instructional tools, and developing tools that aid with medical interaction and patient alerts, resulting in two patents.
- ✓ In 2011-2012, the Center received \$27,563 of E&G funding, and the return on E&G investment is 1:63. That is, for each dollar of E&G funding, the Center brings in \$63 from other sources.
- ✓ The Center should continue its work. It provides valuable assistance in conformance with several Board of Governors mission statements: strengthening quality and reputation of scholarship, research and innovation; increasing collaboration and levels of community engagement and to increase external support for research activity. It supports almost 9 FTE and provides opportunities to students for research assistantships. Its work also supports substance abuse prevention statewide and has resulted in several conference presentations as well as the ability to host 5 conferences. It has been granted a patent for a Variable Height Information Center which allows for easier access to state programs (such as Medicaid) and has another application pending.
- ✓ No changes are necessary to its mission or organizational structure.
- ✓ The Center is funded by federal, state, local, and private/nonprofit funds. Although it has been challenged by the current fiscal climate, reducing their expenditures by almost half, its ability to adapt its mission to new projects, and its fundraising efforts indicate that funding is expected to continue.
- ✓ No change in classification is needed.
- ✓ Retain active status.

CENTER FOR ADVANCEMENT OF LEARNING AND ASSESSMENT (CALA)

210-B Sliger Building
2035 E. Paul Dirac Dr.
Tallahassee, FL 32306-2801

Phone: (850) 645-2252
Director: Faranak Rohani, Ph.D.
frohani@cala.fsu.edu
(850) 644-5371
Budget and funding contact: Katie Brock
brock@ispa.fsu.edu
(850) 644-4564
Web site: <http://www.cala.fsu.edu>

Note: CALA was established in July 2008. Information requested for 2007-2008 is not applicable.

If multidisciplinary, please list departments associated with CI.

N/A

MISSION AND ACTIVITIES

What is the Center's or Institute's mission statement?

CALA's mission is to develop and improve evidence-based assessment procedures that enhance learning. We seek nontraditional alternatives that effectively and efficiently integrate assessment and instruction, take advantage of technological advancements, involve stakeholders, and inform policy makers and educators. The Center builds on its research findings to design training and assessment tools that support successful learning.

Briefly, what activities are consistently performed that move the Center/Institute toward meeting its established mission? This section should also include activities related to meeting the State Board of Governor's mission. The State Board of Governors mission includes the following:

1. *Strengthen Quality & Reputation of Academic Programs and Universities*
2. *Increase Degree Productivity and Program Efficiency*
3. *Increase the Number of Degrees Awarded in STEM and Other Areas of Strategic Emphasis*
4. *Strengthen Quality and Reputation of Scholarship, Research and Innovation*
5. *Increase Research and Commercialization Activity*
6. *Increase Collaboration and External Support for Research Activity*
7. *Strengthen Quality and Recognition of Commitment to Community and Business Engagement*
8. *Increase Levels of Community and Business Engagement*
9. *Increase Community and Business Workforce*

The following activities support the following BOG mission in the following areas: strengthen the quality & reputation of academic programs and universities; strengthen quality and reputation of scholarship, research and innovation; increase research and commercialization activity; and strengthen quality and recognition of commitment to community and business engagement.

Activities:

The following are the major goals and associated activities of our Center:

- a. **Conducting research on the nature of knowledge and learning.** Our research for the U.S. Department of Education's Institute of Education Sciences (IES) entitled "An Alternate Statewide Assessment Strategy that Uses Test Results to Support Learning and Includes Measures of Problem Solving" is designed to enhance the teaching of science concepts and to accurately measure student learning. A number of papers have been written by the CALA research staff on this subject and have been submitted for publication. A sample of these articles can be found at <http://www.cala.fsu.edu/ies/publications/>.
- b. **Conducting research on how technology can be used effectively in the field of assessment.** As part of our ongoing research on the effective use of technology in the field of education, we are in the process of developing a mobile application for the delivery of learning modules for the Florida Teacher Certification Examinations. The app is planned for free dissemination through the myFSU Mobile page at the iTunes Store.
- c. **Developing instruction and training, using advanced technologies, that address the different learning modalities.** CALA has developed interactive training materials related to types of knowledge and complex assessments used to estimate a learner's proficiency with competencies that cannot be evaluated using conventional written tests. Samples are available at <http://www.cala.fsu.edu/ies/training/>.
- d. **Developing assessment techniques that can accurately measure types of cognitive capabilities and knowledge.** A great deal of research has been conducted on an appropriate framework for the development of performance assessment specifications and formative and summative assessment worksheets for middle-school science. These frameworks provide the foundation for the internal and external assessments of science competencies in our IES project.

- e. **Working with organizations to maximize the effectiveness of their training and assessment programs**
The Florida Fish and Wildlife Conservation Commission online course and examination developed and maintained by CALA and the development of Job Task Analysis for the Florida Highway Patrol are examples of services in support of training and assessment for state organizations.
- f. **Producing research-based reports to serve as guides for policy makers and educators.** The work associated with the quality control project related to FCAT for the past 12 years has provided the Florida Department of Education and the legislature with the types of reports that are used for making policy decisions.
- g. **Serving as a constant resource for private, governmental, and nonprofit agencies while providing professional-level work experience for graduate and undergraduate students.** CALA has provided a constant training ground for undergraduate and graduate students. We average five to six assistantships per year.

What is the Center or Institute best known for?

Our Center is best known for research and test development in learning and assessment.

What is the greatest strength of the Center or Institute?

The core strength of the Center is our small yet dedicated staff. Throughout our history, we have maintained a remarkably stable team of specialists ready to create and serve. Our staff possess years of experience and high levels of expertise. We are a one-stop shop that offers an extensive knowledge base in assessment and evaluation, instructional design, psychometrics, educational research, software engineering, writing, editing, graphic design, and web and multimedia development.

What are the most significant challenges facing the Center or Institute?

Our most significant challenge is securing funding, due to state budget cuts and economic down times.

FUNDING (2007–2008 THROUGH 2011–2012)

What is the source and amount of expenditures from 2007-2008 to 2011-2012 for the Center/Institute using the following categories?

Expenditures	2007–2008	2010–2011	2011–2012
University (E&G)	N/A	\$273,684	0
State (General Revenue Other than E&G)	N/A	0	0
State (C&G)	N/A	\$595,898	\$621,586
Federal	N/A	\$94,651	\$653,878
Local	N/A	0	0
Private / nonprofit organization	N/A	\$115,702	\$1,095
Endowment proceeds	N/A	0	0
Proceeds from patents or royalties	N/A	0	0
Sales from services or products	N/A	0	0
Others (specify)	N/A	0	0
Total expenditures	N/A	\$1,079,935	\$1,276,559

ENDOWMENT INFORMATION

Is the Center/Institute supported in whole or in part by proceeds from an endowment? No

What is the amount of the endowment? NA

Where is the endowment managed? NA

Does the C/I spend only interest earnings? NA

Does the C/I spend part of the capital of the endowment? NA

CONTRACT AND GRANT INFORMATION

	2007–2008	2010–2011	2011–2012
Number of proposals submitted	N/A	4	5
Number of proposals funded	N/A	4	6
Proposals Made Jointly with Individuals not Directly associated with the Center / Institute	N/A	1	0
Total amount of awards	N/A	\$540,741	\$782,656

****NOTE:** Proposals submitted during a fiscal year are not necessarily funded in the same fiscal year or are awards and/or transfers from an existing award. Therefore, the number of proposals funded and total amount of awards includes data on all proposal funding received for this period of time.

Were any of the contracts or grants multi-year? Yes

How many years does the Center or Institute have left on any current contract or grant? 2

Have any contracts or grants been renewed in the reporting period and, if so, how many? 8

OTHER CENTER OR INSTITUTE ACTIVITIES

Has the Center/Institute generated any patents or royalties? No

Has the Center or Institute applied for a patent that has not yet been granted? If so, please describe. N/A

EMPLOYMENT
(2007–2008 THROUGH 2011–2012)

UNIVERSITY POSITIONS ASSOCIATED WITH THE C/I:

	2007–2008	2010–2011	2011–2012
Number of Faculty (FTE)	N/A	5	5
Number of A&P and USPS positions (FTE)	N/A	8.1	6.66
Total Positions	N/A	13.1	11.66

STUDENT EMPLOYMENT (INCLUDE GRADUATE AND UNDERGRADUATE):

	2007–2008	2010–2011	2011–2012
Number of research assistants employed (FTE)	N/A	.11	2.35
Number of teaching assistants employed (FTE)	N/A	0	0
Number of interns (with stipend or OPS)	N/A	0	0
Number of interns (without pay)	N/A	0	0
Total student positions	N/A	.11	2.35

OTHER STUDENT FINANCIAL BENEFITS
(INCLUDING GRADUATE AND UNDERGRADUATE):

	2007–2008	2010–2011	2011–2012
	Number/Amount	Number/Amount	Number/Amount
Out of state tuition waivers	N/A/N/A	0/0	0/0
Student fellowships	N/A/N/A	0/0	0/0
Scholarships	N/A/N/A	0/0	0/0
Post-doctoral support	N/A/N/A	0/0	0/0
Amt of student travel support	N/A/N/A	0/0	0/0
Amt of registration for student conference attendance	N/A/N/A	0/0	0/0
Other support	N/A/N/A	4/\$2,678	6/\$34,369

Comments or additional information

RESEARCH AND EXTENSION (2007–2008 THROUGH 2011–2012)

Note: web-delivered and CD-Rom publications are counted in these totals.

PUBLICATIONS IN REFEREED JOURNALS

Note: Do not include those credited to a faculty member's primary academic department that are unrelated to the C/I mission.

	2007–2008	2010–2011	2011–2012
Number of faculty publications	N/A	1	0
Number of student publications	N/A	0	0
Number of publications authored jointly with other faculty at FSU	N/A	0	0
Number of publications authored jointly with students in the C/I	N/A	0	0
Number of publications authored jointly with faculty at locations other than FSU	N/A	0	0

Please have a list of relevant publications available if requested.

OTHER PUBLICATIONS AND CONFERENCE PAPERS

	2007–2008	2010–2011	2011–2012
Number of extension or outreach publications	N/A	5	6
Number of national conference papers submitted	N/A	0	2
Number of national conference papers accepted	N/A	0	2
<i>DATE, CONFERENCE AND NAME OF PRESENTATION(S)</i>	N/A	N/A	*
Number of regional conference papers submitted	N/A	0	0
Number of regional conference papers accepted	N/A	0	0
<i>DATE, CONFERENCE AND NAME OF PRESENTATION(S)</i>	N/A	0	0

*1. January 2012, Association for Science Teacher Education 2012 International Conference, "Science Competencies That Go Unassessed."

2. March 2012, National Association for Research in Science Teaching Annual International Conference, "Performance Assessment of Science Competencies That Normally Go Unassessed."

ANNUAL REPORT

Does the Center or Institute produce an annual report? If so, please have copies available or provide the web link.

No

STUDENT PUBLICATIONS

	2007–2008	2010–2011	2011–2012
Number of student theses credited to or associated with the C/I	N/A	0	0
Number of dissertations	N/A	0	0
Number of any other student papers	N/A	0	0

PROFESSIONAL DEVELOPMENT AND ASSISTANCE**Consulting**

	2007–2008	2010–2011	2011–2012
Number of consulting contracts	N/A	0	0
Name of consulting recipient(s)	N/A	N/A	N/A
Consulting Subject or Topic	N/A	N/A	N/A
Amount of funding provided through general funds of the C/I	N/A	0	0
Amount of funding obtained through contract in addition to general C/I funds	N/A	0	0

Technical Assistance

	2007–2008	2010–2011	2011–2012
Number of technical assistance sessions or seminars offered	N/A	0	2
Name of technical assistance recipient(s)	N/A	N/A	N/A
Technical Assistance Subject or Topic	N/A	N/A	N/A
Amount of Funding	N/A	0	0

CONFERENCES OR SYMPOSIA

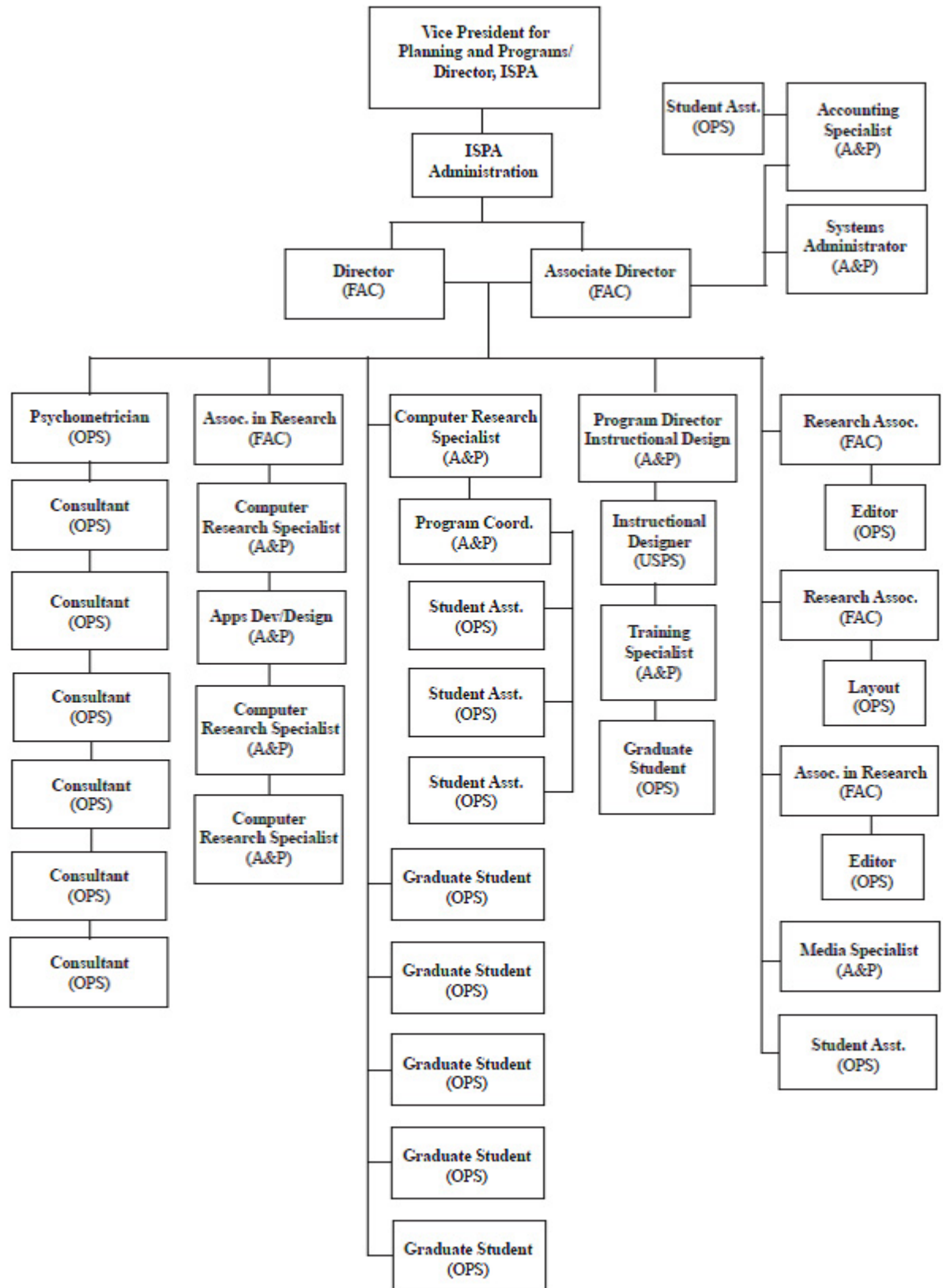
How many conferences or symposia has the Center or Institute sponsored or hosted during this reporting period? Please list.

None

Comments or additional information

MANAGEMENT

Center/Institute organizational chart



Note: All positions are funded by Contracts and Grants.

<i>Is the Center or Institute legislatively created?</i>	No
<i>Does the Center/Institute have an advisory board?</i>	No
<i>How often are meetings held?</i>	N/A
<i>Does the board manage the C/I or does it serve in an advisory capacity?</i>	N/A
<i>Please describe and include a list of current members.</i>	N/A
<i>How long has the Center/Institute director served?</i>	The director has served since the center was established in 2008.
<i>How does the Center/Institute directorship change?</i>	The directorship changes through FSU's standard hiring process, with the Institute director's immediate supervisor, currently Dr. Stephen Hodge, Interim Director of the Institute of Science and Public Affairs, making the hiring decision.
<i>Are there other issues associated with management transition?</i>	No
<i>If there are multiple sites, how are they administered? Who has the final oversight?</i>	N/A
<i>Comments or additional information</i>	
ADDITIONAL ISSUES	
<i>Issues facing the Center or Institute</i>	None

OVERALL EVALUATION

- ✓ CALA is meeting its mission to develop and improve evidence-based assessment procedures that enhance learning. It has developed strategies to enhance the teaching of science concepts and to accurately measure student learning; developed a mobile application for the delivery of learning modules for the Florida Teacher Certification Examinations; developed interactive training materials related to types of knowledge and complex assessments used to estimate a learner's proficiency with competencies that cannot be evaluated using conventional written tests and provided numerous student employment and research opportunities.
- ✓ There is no E&G in CALA's budget; therefore, no return on E&G investment is calculated. The Center brings in over a \$1 million per year with no expenditure by the university.
- ✓ The Center should continue its work. It provides an extensive knowledge base in assessment and evaluation, instructional design, psychometrics, educational research, software engineering, writing, editing, graphic design, and web and multimedia development. It supports 5 faculty FTE and five to six assistantships per year for graduate and undergraduate students.
- ✓ Funding for CALA is split between state and federal sources. CALA serves an array of public sector clients. They include the US Department of Education, the Florida Fish and Wildlife Conservation Commission, the Florida Highway Patrol and the State Department of Education. It is anticipated the success of its partnerships and wide variety of expertise available will assist in continuing funding for the Center.
- ✓ No change in classification is needed.
- ✓ Retain active status.

CENTER FOR INFORMATION MANAGEMENT & EDUCATIONAL SERVICES (CIMES)

210-A Sliger Building
2035 E. Paul Dirac Dr.
Tallahassee, FL 32306-2802

Phone: (850) 645-0830
Director: Rebecca Augustyniak
raugustyniak@admin.fsu.edu
(850) 644-5602
Budget and funding contact: Amber Whetstone
awhetstone@fsu.edu
(850) 645-9542
Web site: <http://www.cimes.fsu.edu>

Note: CIMES was established in July 2008. Information requested for 2007-2008 is not applicable.

If multidisciplinary, please list departments associated with C/I.

N/A

MISSION AND ACTIVITIES

What is the Center's or Institute's mission statement?

CIMES is a multidisciplinary applied research and development center. The Center is committed to leading agencies through the knowledge economy to better serve their target populations through the effective use of information and communication technologies. Our systematic approach to information assets and outreach enables organizations to exceed their strategic and operational goals by transforming complex information into effective communication and learning. CIMES accomplishes its mission by offering a wide variety of customized products and services in the following areas: information management, clearinghouses, knowledge management, information technology (IT), Web design and architecture, instructional design and training, and marketing and product development.

Briefly, what activities are consistently performed that move the Center/Institute toward meeting its established mission?

This section should also include activities related to meeting the State Board of Governor's mission.

The State Board of Governors mission includes the following:

1. *Strengthen Quality & Reputation of Academic Programs and Universities*
2. *Increase Degree Productivity and Program Efficiency*
3. *Increase the Number of Degrees Awarded in STEM and Other Areas of Strategic Emphasis*
4. *Strengthen Quality and Reputation of Scholarship, Research and Innovation*
5. *Increase Research and Commercialization Activity*
6. *Increase Collaboration and External Support for Research Activity*
7. *Strengthen Quality and Recognition of Commitment to Community and Business Engagement*
8. *Increase Levels of Community and Business Engagement*
9. *Increase Community and Business Workforce*

The following provides a list of BOG mission goals with CIMES related projects and activities listed under the appropriate area:

1. Strengthen Quality & Reputation of Academic Programs and Universities
 - DOE/Board of Governors- Florida ExpertNet
 - AT&T – Inventory of Academic Programs
 - U.S. Chamber of Commerce, Economic Development Administration- Enhancing Florida ExpertNet to Support Economic Development
 - FSU Film School – Motion Portal
 - FSU College of Medicine – Web Site and Content Management System
 - Florida Institute for the Commercialization of Public Research - Web Site and Content Management System
2. Increase Degree Productivity and Program Efficiency
 - FSU Film School - Motion Portal
 - FSU Center for Intensive English Studies – Business Management and Student Portal
3. Strengthen Quality and Reputation of Scholarship, Research and Innovation
 - DOE/Board of Governors- Florida ExpertNet
 - DOE/Board of Governors- Centers/Institutes Online Reporting System
 - AT&T – Inventory of Academic Programs
 - U.S. Chamber of Commerce, Economic Development Administration- Enhancing Florida ExpertNet to Support Economic Development
 - Florida Institute for the Commercialization of Public Research - Web Site and Content Management System
4. Increase Research and Commercialization Activity
 - DOE/Board of Governors- Florida ExpertNet
 - DOE/Board of Governors- Centers/Institutes Online Reporting System
 - AT&T – Inventory of Academic Programs
 - U.S. Chamber of Commerce, Economic Development Administration- Enhancing Florida ExpertNet to Support Economic Development
 - Florida Institute for the Commercialization of Public Research - Web Site and Content Management System
5. Increase Collaboration and External Support for Research Activity
 - DOE/Board of Governors- Florida ExpertNet
 - DOE/Board of Governors- Centers/Institutes Online Reporting System

- AT&T – Inventory of Academic Programs
 - U.S. Chamber of Commerce, Economic Development Administration - Enhancing Florida ExpertNet to Support Economic Development
 - Florida Institute for the Commercialization of Public Research
6. Strengthen Quality and Recognition of Commitment to Community and Business Engagement
 - DOE/Board of Governors, Florida ExpertNet
 - Contributed to Building Bridges: University Community Service, Engagement and Collaboration – Chapter IV – Section B. No. 4. Build Upon the ExpertNet Website as a Portal to Support Community Service and Engagement.
 - U.S. Chamber of Commerce, Economic Development Administration
 - Enhancing Florida ExpertNet to Support Economic Development
 7. Increase Levels of Community and Business Engagement
 - DOE/Board of Governors, Florida ExpertNet
 8. Increase Community and Business Workforce
 - U.S. Chamber of Commerce, Economic Development Administration
 - Enhancing Florida ExpertNet to Support Economic Development

Activities:

The following provides sponsors and funded projects categorized by the primary activities included in CIMES mission statement:

- a. Research, design, and develop customized information and knowledge management systems using leading edge technologies.

DOE/Florida Board of Governors

- Florida ExpertNet
- Centers/Institutes Online Reporting System
- Graduate Recruitment Identification System

Description: CIMES develops and operates these systems to support the Board of Governors mission. These systems provide tools for managing and publishing information about the expertise and innovation within Florida's university system.

Florida Department of Education

Division of Food and Nutrition, Food and Nutrition Resource Center

- Online Library Catalog and Content Management System

Description: Developed an online library catalog and management system to serve the public and targeted audiences.

Division of Curriculum and Instruction, Office of Instructional Materials

- Review & Evaluation for Adoption of Learning Materials Web Portal and WBT Training Modules

Description: Designed and developed an interactive web-based portal for managing the textbook adoption training and communication.

Florida Department of Transportation

- Freight Forecasting: System Analysis and Recommendations

Description: Researched existing freight data management systems and databases and provided a recommendation to meet Florida's needs.

Florida State University

- Center for Intensive English Studies - Business Management and Student Portal

Description: Designed and developed a business management portal to support course management, people, registration, and accounting processes.

FSU College of Medicine

- COM Web Development and Implementation

Description: Designed and developed a public web site and content management system to support the needs of the College's target audiences.

FSU Film School

- Film School Project Portal

Description: Designed and developed a portal to support program management and student assessment.

FSU Florida Center for Prevention Research

- Dashboard Webinar and Consultation Services

Description: Provided a webinar on Dashboards for Children and Families (CF) managers to facilitate decision-making for developing a CF dashboard.

Florida Institute for the Commercialization of Public Research

- Web and Content Management Development Services

Description: Designed and developed a customized system for managing and publishing information.

California Department of Health, California Tobacco Control Program

- California Tobacco Control Web-based System Development and Maintenance

Description: Designed and developed a portal that supports the grants management life cycle process.

AT&T

- Statewide Academic Program Inventory

Description: Created the TalentNet Web system to support managing and publishing a catalog of post-secondary programs.

U.S. Chamber of Commerce, Economic Development Administration

- Enhancing Florida ExpertNet to Foster Economic Development in Florida

Description: Provide enhancements to Florida ExpertNet to make it a more powerful tool for businesses and industry in order to promote economic development in Florida.

University of Maryland at Baltimore, Hilltop Institute

- Tobacco Program Information and Tracking System

Description: Provided consultation services for developing a Tobacco Control Web-based management system.

Nebraska Department of Health

- Nebraska Local Monitoring System Development

Description: Designed and developed a customized portal for managing tobacco control programs and grants.

- b. Research and develop instructional strategies and materials to meet agencies training needs.

Florida Department of Education, Division of Curriculum and Instruction, Office of Instructional Materials

- Review & Evaluation for Adoption of Learning Materials Web Portal and WBT Training Modules

Description: Designed and developed web-based training modules to train textbook adoption committees around the state.

Florida Department of Transportation, Transportation Statistics Office

- Applying Instructional Design Practices to Evaluate and Improve the RCI Training Curriculum

- Road Characteristics Inventory Web-based Training Curriculum Development • Highway Performance Monitoring System Web-based Training Development and Implementation
- Traffic Forecasting Web-based Training Discovery, Analysis, Prototype
- Evaluation of Roadway Characteristics Inventory WBT

Description: Conducted research to determine a strategy for designing instructional material for training target audiences. Designed, developed, produced, and implemented Web-based training modules.

c. Design, create, and implement outreach and marketing campaigns

DOE/Florida Board of Governors

- Florida ExpertNet
- CIMES Instructional Design Services

Description: Designed marketing and outreach campaigns towards targeted audiences. CIMES received an APEX national award for the CIMES Instructional Design Services campaign materials.

Awards

Marketing & Public Relations Campaigns, Programs & Plans

APEX: Awards for Publication Excellence
2012

CIMES Instructional Design Services Marketing Campaign

CIMES staff, Margaret Armstrong (writer) and Loren Rice (graphic designer), were awarded the APEX Award for Publication Excellence in the category of Marketing & Public Relations Campaigns, Programs, & Plans for a marketing campaign they created and designed for CIMES instructional design services.

Electronic Media and Video

APEX: Awards for Publication Excellence
2010

State Instructional Materials Committee Training Course
Florida Department of Education, Office of Instructional Materials

The award in excellence for Electronic Media and Video was presented for a series of Web-based training modules designed by Iskandaria Masduki to educate Florida's instructional materials adoption committee members on the priorities for evaluating materials for statewide adoption.

Design and Illustration

APEX: Awards for Publication Excellence

2010

Priorities for Evaluating Instructional Materials: Research Update

Florida Department of Education Office of Instructional Materials

The award for Design and Illustration was received in recognition for the cover designed by Loren Rice for *Priorities for Evaluating Instructional Materials: Research Update*.

What is the Center or Institute best known for?

The Center for Information Management and Educational Services is well-known for research, design, and customized development expertise in the areas of information management and information technology and instructional design and training.

What is the greatest strength of the Center or Institute?

CIMES greatest strength is the ability to provide cost-effective, innovative, high quality solutions to meet a wide range of needs. As an applied research facility, we do more than provide products and services—we help organizations inform and better serve people.

What are the most significant challenges facing the Center or Institute?

One of the greatest challenges for CIMES is acquiring additional contiguous office space to accommodate a growing staff.

FUNDING (2007–2008 THROUGH 2011–2012)

What is the source and amount of expenditures from 2007-2008 to 2011-2012 for the Center/Institute using the following categories?

Expenditures	2007–2008	2010–2011	2011–2012
University (E&G)	N/A	N/A	N/A
State (General Revenue Other than E&G)	N/A	N/A	N/A
State (C&G)	N/A	\$122,378	\$194,949
Federal	N/A	0	0
Local	N/A	\$564,878	\$415,713
Private / nonprofit organization	N/A	\$59,373	\$70,790
Endowment proceeds	N/A	0	0
Proceeds from patents or royalties	N/A	N/A	N/A
Sales from services or products	N/A	*	*
Others (specify)	N/A	N/A	N/A
Total expenditures	N/A	\$764,629	\$681,452

***NOTE: Sales from Services or Products** – CIMES has several agreements with various departments at FSU. In 2010- 2011 the agreements equaled \$163,662 in funding and in 2011-2012 it was \$95,038. These funds are reported as part of the FREAC auxiliary account.

ENDOWMENT INFORMATION

Is the Center/Institute supported in whole or in part by proceeds from an endowment? No

What is the amount of the endowment? NA

Where is the endowment managed? NA

Does the C/I spend only interest earnings? NA

Does the C/I spend part of the capital of the endowment? NA

CONTRACT AND GRANT INFORMATION

	2007–2008	2010–2011	2011–2012
Number of proposals submitted	N/A	4	10
Number of proposals funded	N/A	3	8
Proposals Made Jointly with Individuals not Directly associated with the Center / Institute	N/A	0	0
Total amount of awards	N/A	\$633,015	\$835,190

****NOTE:** Proposals submitted during a fiscal year are not necessarily funded in the same fiscal year or are awards and/or transfers from an existing award. Therefore, the number of proposals funded and total amount of awards includes data on all proposal funding received for this period of time.

Were any of the contracts or grants multi-year? Yes

How many years does the Center or Institute have left on any current contract or grant? 4.5

Have any contracts or grants been renewed in the reporting period and, if so, how many? 4

OTHER CENTER OR INSTITUTE ACTIVITIES

Has the Center/Institute generated any patents or royalties? No

Has the Center or Institute applied for a patent that has not yet been granted? If so, please describe. No

EMPLOYMENT
(2007–2008 THROUGH 2011–2012)

UNIVERSITY POSITIONS ASSOCIATED WITH THE C/I:

	2007–2008	2010–2011	2011–2012
Number of Faculty (FTE)	N/A	1.9	1.5
Number of A&P and USPS positions (FTE)	N/A	3.81	6.46
Total Positions	N/A	5.71	7.96

STUDENT EMPLOYMENT (INCLUDE GRADUATE AND UNDERGRADUATE):

	2007–2008	2010–2011	2011–2012
Number of research assistants employed (FTE)	N/A	0	.66
Number of teaching assistants employed (FTE)	N/A	0	0
Number of interns (with stipend or OPS)	N/A	0	0
Number of interns (without pay)	N/A	0	0
Total student positions	N/A	0	.66

OTHER STUDENT FINANCIAL BENEFITS
(INCLUDING GRADUATE AND UNDERGRADUATE):

	2007–2008	2010–2011	2011–2012
	Number/Amount	Number/Amount	Number/Amount
Out of state tuition waivers	N/A/N/A	0/0	0/0
Student fellowships	N/A/N/A	0/0	0/0
Scholarships	N/A/N/A	0/0	0/0
Post-doctoral support	N/A/N/A	0/0	0/0
Amt of student travel support	N/A/N/A	0/0	0/0
Amt of registration for student conference attendance	N/A/N/A	0/0	0/0
Other support	N/A/N/A	0/0	0/0

Comments or additional information

RESEARCH AND EXTENSION (2007–2008 THROUGH 2011–2012)

Note: web-delivered and CD-Rom publications are counted in these totals.

PUBLICATIONS IN REFEREED JOURNALS

Note: Do not include those credited to a faculty member's primary academic department that are unrelated to the C/I mission.

	2007–2008	2010–2011	2011–2012
Number of faculty publications	N/A	0	0
Number of student publications	N/A	0	0
Number of publications authored jointly with other faculty at FSU	N/A	0	0
Number of publications authored jointly with students in the C/I	N/A	0	0
Number of publications authored jointly with faculty at locations other than FSU	N/A	0	0

Please have a list of relevant publications available if requested.

OTHER PUBLICATIONS AND CONFERENCE PAPERS

	2007–2008	2010–2011	2011–2012
Number of extension or outreach publications	N/A	0	0
Number of national conference papers submitted	N/A	0	2
Number of national conference papers accepted	N/A	0	2
<i>DATE, CONFERENCE AND NAME OF PRESENTATION(S)</i>	N/A	N/A	*
Number of regional conference papers submitted	N/A	0	0
Number of regional conference papers accepted	N/A	0	0
<i>DATE, CONFERENCE AND NAME OF PRESENTATION(S)</i>	N/A	0	0

*Learning Solutions March, 2012, Conference in Orlando –

- How to Design Scenario-based Assessments
- Immersive Learning Conference and Symposium, January 18-20, 2012, in New Orleans
- How to Convert Linear to Branching Simulation: FDOT Case Study

Project Reports

CIMES has developed and produced dozens of project-related reports (research, curriculum, and final) as part of its funded project deliverables.

ANNUAL REPORT

Does the Center or Institute produce an annual report? If so, please have copies available or provide the web link. No

STUDENT PUBLICATIONS

	2007–2008	2010–2011	2011–2012
Number of student theses credited to or associated with the C/I	N/A	0	0
Number of dissertations	N/A	0	0
Number of any other student papers	N/A	0	0

PROFESSIONAL DEVELOPMENT AND ASSISTANCE**Consulting**

	2007–2008	2010–2011	2011–2012
Number of consulting contracts	N/A	0	0
Name of consulting recipient(s)	N/A	0	0
Consulting Subject or Topic	N/A	0	0
Amount of funding provided through general funds of the C/I	N/A	0	0
Amount of funding obtained through contract in addition to general C/I funds	N/A	0	0

Technical Assistance

	2007–2008	2010–2011	2011–2012
Number of technical assistance sessions or seminars offered	N/A	1	0
Name of technical assistance recipient(s)	N/A	*	0
Technical Assistance Subject or Topic	N/A	*	0
Amount of Funding	N/A	\$2500	0

* Rebecca Augustyniak, CIMES director, presented a webinar on dashboard development to local and state substance abuse prevention organizations. The goal was to align stakeholders' expectations of a state, region, and community dashboard. Participants realized the many benefits of using a dashboard based on key indicators to drive state and community improvement.

CONFERENCES OR SYMPOSIA

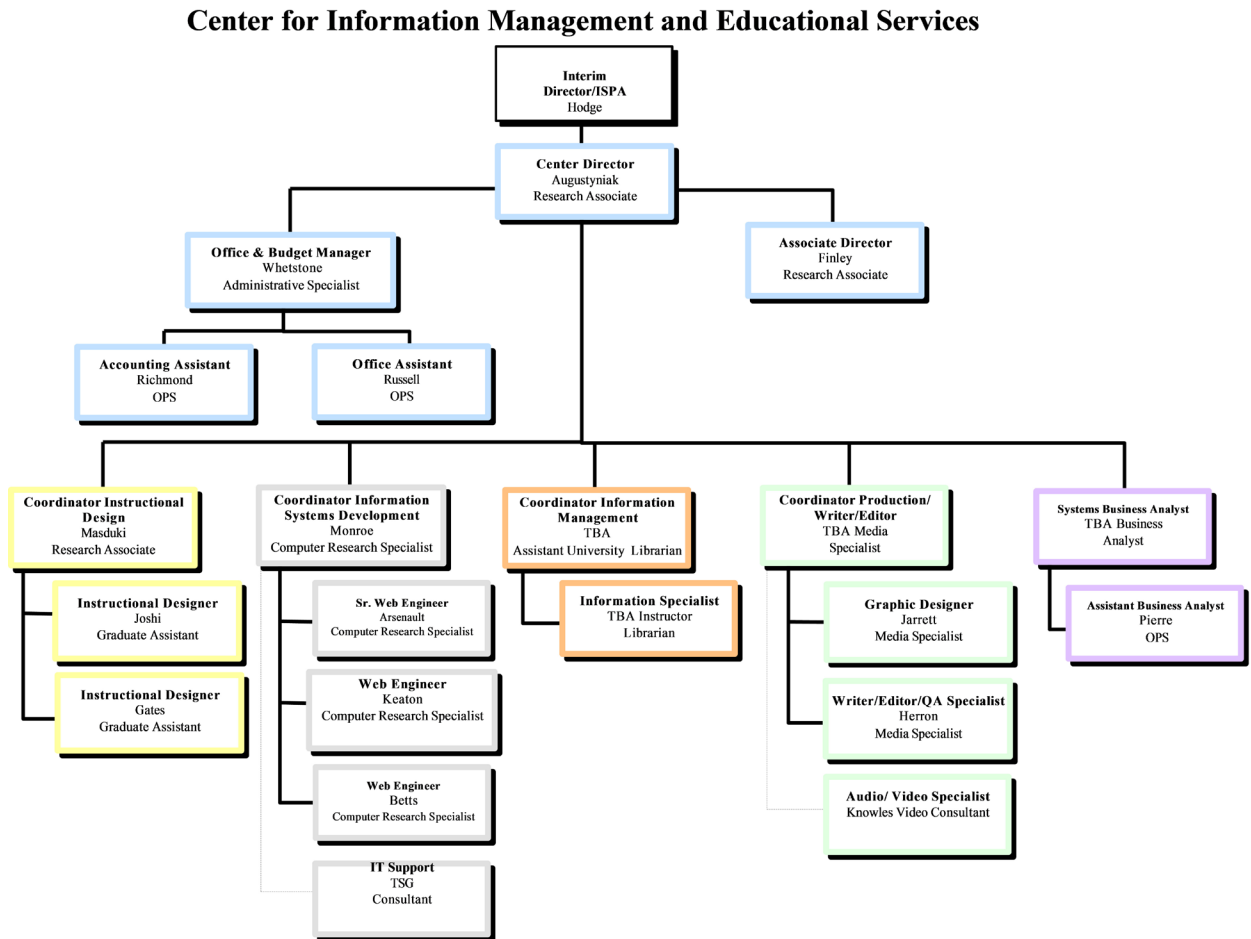
How many conferences or symposia has the Center or Institute sponsored or hosted during this reporting period? Please list.

None

Comments or additional information

MANAGEMENT

Center/Institute organizational chart



<i>Is the Center or Institute legislatively created?</i>	No; however, CIMES faculty and staff provide support to the Leadership Board for Applied Research and Public Service.
<i>Does the Center/Institute have an advisory board?</i>	No
<i>How often are meetings held?</i>	N/A
<i>Does the board manage the C/I or does it serve in an advisory capacity?</i>	N/A
<i>Please describe and include a list of current members.</i>	N/A
<i>How long has the Center/Institute director served?</i>	Since the establishment of the center in July, 2008
<i>How does the Center/Institute directorship change?</i>	The directorship changes through FSU's standard hiring process, with the Institute director's immediate supervisor, currently Dr. Stephen Hodge, Interim Director of the Institute of Science and Public Affairs, making the hiring decision.
<i>Are there other issues associated with management transition?</i>	No
<i>If there are multiple sites, how are they administered? Who has the final oversight?</i>	N/A
<i>Comments or additional information</i>	
ADDITIONAL ISSUES	
<i>Issues facing the Center or Institute</i>	The biggest hurdle facing CIMES is not funding but rather the acquisition of contiguous office space for the growth of CIMES staff.

OVERALL EVALUATION

- ✓ The Center is meeting its mission of assisting agencies to better serve their target populations through the effective use of information and communication technologies and turning complex information into information and learning. Its activities include information management, development of clearinghouses, web design and architecture, instructional design and training, and marketing and product development for FSU, the Board of Governors and numerous Florida agencies as well as out-of-state and private sector clients.
- ✓ CIMES receives no E&G funding so there is no return on an E&G investment. The Center brings in several hundred thousand dollars per year without state expenditures.
- ✓ The Center should continue its work. It provides valuable assistance in conformance with several Board of Governors mission statements: strengthening the quality and reputation of academic programs and universities; increasing degree productivity and program efficiency; strengthening quality and reputation of scholarship, research and innovation; and increasing research and commercialization activity. It has received numerous awards for its work on public relations marketing campaigns, development of a training course and for design and illustration. Finally, it provides employment for almost 8 FTE and provides students with the opportunity to be employed as research assistants.
- ✓ No changes are necessary to its mission or organizational structure.
- ✓ The Center is funded by state, local and private funds. With numerous projects and award-winning work, it is expected the Center will continue to receive funding from these sources. Its primary challenge is not funding, but finding contiguous space for staff.
- ✓ No change in classification is needed.
- ✓ Retain active status.

WINTHROP-KING INSTITUTE FOR FRENCH AND FRANCOPHONE STUDIES

625 University Way
362 Diffenbaugh Bldg

Phone: (850) 644-7636
Director: Martin Munro
mmunro@fsu.edu
(850) 644-8559
Budget and funding contact: Racha Sattati
rsattati@fsu.edu
(850) 644-7636
Web site: winthropking.fsu.edu

*If multidisciplinary, please list
departments associated with C/I.*

Modern Languages and Linguistics

MISSION AND ACTIVITIES

*What is the Center's or Institute's
mission statement?*

Funded by a generous bequest from the late Mrs. Ada Belle Winthrop-King, Florida State University's Institute for Contemporary French and Francophone Studies is a center for interdisciplinary scholarship on France and the wider French-speaking world. Our interests have a contemporary focus combined with a keen awareness of the historical forces which have shaped the modern world. Through its program of distinguished guest speakers, visiting professors and conferences, together with undergraduate and graduate scholarships, the Institute offers outstanding opportunities in support of teaching and research in French and Francophone studies. While we are grounded in French and Francophone studies, we seek to make new connections with other disciplines, within and beyond F.S.U. As our fields of interest grow and diversify, so the Winthrop-King Institute aims to be at the forefront of new developments, and to continue to play a leading role in promoting French and Francophone studies locally, nationally, and internationally.

Briefly, what activities are consistently performed that move the Center/Institute toward meeting its established mission? This section should also include activities related to meeting the State Board of Governor's mission. The State Board of Governors mission includes the following:

1. *Strengthen Quality & Reputation of Academic Programs and Universities*
2. *Increase Degree Productivity and Program Efficiency*
3. *Increase the Number of Degrees Awarded in STEM and Other Areas of Strategic Emphasis*
4. *Strengthen Quality and Reputation of Scholarship, Research and Innovation*
5. *Increase Research and Commercialization Activity*
6. *Increase Collaboration and External Support for Research Activity*
7. *Strengthen Quality and Recognition of Commitment to Community and Business Engagement*
8. *Increase Levels of Community and Business Engagement*
9. *Increase Community and Business Workforce*

What is the Center or Institute best known for?

What is the greatest strength of the Center or Institute?

Activities:

- a. Strengthen the quality of the French Division of the Department of Modern Languages and Linguistics, and of the University more broadly. This is done through a program of distinguished speakers and international conferences.
- b. Support graduate students and faculty across the Department through conference and research travel. This also strengthens the quality and reputation of scholarship, research, and innovation.
- c. Publication of books and journals from our conference proceedings, which indicates increased research activity.
- d. Provision of events and conferences to create collaborations between faculty within the university, nationally, and internationally.
- e. Sponsoring of outreach activities, such as inviting high school students of French to our events, to increase levels of community engagement.

The Institute is best known for its high-profile and innovative program of events, and for the scholarships that support the work of students (undergraduate and graduate) and faculty (in French and other language divisions).

The greatest strength is its ability to host world-leading events that gather together prominent scholars, writers, and artists. Its ability to support the work of faculty and students in the Department of Modern Languages is also a great strength.

What are the most significant challenges facing the Center or Institute?

We need to ensure we remain at the forefront of French and Francophone studies. Our most significant challenge relates to the shortage of tenure-track faculty members in the French Division—at the end of this semester we will have lost three faculty members in two years, without being replaced. This creates real problems in ensuring the good health of the French program, without which the Institute will suffer and not fulfill its full potential.

FUNDING (2007–2008 THROUGH 2011–2012)

What is the source and amount of expenditures from 2007-2008 to 2011-2012 for the Center/Institute using the following categories?

Expenditures	2007–2008	2010–2011	2011–2012
University (E&G)	\$165,339	\$178,683	\$162,326
State (General Revenue Other than E&G)	0	0	0
State (C&G)	0	0	0
Federal	0	0	0
Local	0	0	0
Private / nonprofit organization	\$112,601	\$333,173	\$370,748
Endowment proceeds	\$55,518	\$96,958	\$119,095
Proceeds from patents or royalties	0	0	0
Sales from services or products	0	0	0
Others (specify)	0	0	0
Total expenditures	\$333,458	\$608,814	\$652,169

ENDOWMENT INFORMATION

Is the Center/Institute supported in whole or in part by proceeds from an endowment?

Yes

What is the amount of the endowment?

\$15,792,658

Where is the endowment managed?

FSU Foundation

Does the C/I spend only interest earnings?

Yes

Does the C/I spend part of the capital of the endowment?

No

CONTRACT AND GRANT INFORMATION

	2007–2008	2010–2011	2011–2012
Number of proposals submitted	0	0	0
Number of proposals funded	0	0	0
Proposals Made Jointly with Individuals not Directly associated with the Center / Institute	0	0	0
Total amount of awards	0	0	0

****NOTE:** Proposals submitted during a fiscal year are not necessarily funded in the same fiscal year or are awards and/or transfers from an existing award. Therefore, the number of proposals funded and total amount of awards includes data on all proposal funding received for this period of time.

Were any of the contracts or grants multi-year? N/A

How many years does the Center or Institute have left on any current contract or grant? N/A

Have any contracts or grants been renewed in the reporting period and, if so, how many? N/A

OTHER CENTER OR INSTITUTE ACTIVITIES

Has the Center/Institute generated any patents or royalties? No

Has the Center or Institute applied for a patent that has not yet been granted? If so, please describe. No

EMPLOYMENT (2007–2008 THROUGH 2011–2012)

UNIVERSITY POSITIONS ASSOCIATED WITH THE C/I:

	2007–2008	2010–2011	2011–2012
Number of Faculty (FTE)	1	1	1
Number of A&P and USPS positions (FTE)	1	1	1
Total Positions	2	2	2

STUDENT EMPLOYMENT (INCLUDE GRADUATE AND UNDERGRADUATE):

	2007–2008	2010–2011	2011–2012
Number of research assistants employed (FTE)	0	0	0
Number of teaching assistants employed (FTE)	0	0	0
Number of interns (with stipend or OPS)	0	0	0
Number of interns (without pay)	0	0	0
Total student positions	0	0	0

OTHER STUDENT FINANCIAL BENEFITS (INCLUDING GRADUATE AND UNDERGRADUATE):

	2007–2008 Number/Amount	2010–2011 Number/Amount	2011–2012 Number/Amount
Out of state tuition waivers	N/A/N/A	N/A/N/A	N/A/N/A
Student fellowships	N/A/N/A	N/A/N/A	N/A/N/A
Scholarships	31/\$180,183	47/\$215,149	47/\$222,653
Post-doctoral support	N/A/N/A	N/A/N/A	N/A/N/A
Amt of student travel support	13*/\$10,399	14/\$17,257	16/\$16,241
Amt of registration for student conference attendance	**/**	**/**	**/**
Other support	0/0	16/\$27,498	13/\$28,978

*Estimate

**Travel funds are disbursed as reimbursement from the FSU Foundation as one lump sum.

Comments or additional information

RESEARCH AND EXTENSION (2007–2008 THROUGH 2011–2012)

Note: web-delivered and CD-Rom publications are counted in these totals.

PUBLICATIONS IN REFEREED JOURNALS

Note: Do not include those credited to a faculty member's primary academic department that are unrelated to the C/I mission.

	2007–2008	2010–2011	2011–2012
Number of faculty publications	5	4	1
Number of student publications	0	0	1
Number of publications authored jointly with other faculty at FSU	2	1	0
Number of publications authored jointly with students in the C/I	0	0	0
Number of publications authored jointly with faculty at locations other than FSU	3	3	1

Please have a list of relevant publications available if requested.

OTHER PUBLICATIONS AND CONFERENCE PAPERS

	2007–2008	2010–2011	2011–2012
Number of extension or outreach publications	0	0	0
Number of national conference papers submitted	0	0	0
Number of national conference papers accepted	0	0	0
<i>DATE, CONFERENCE AND NAME OF PRESENTATION(S)</i>	N/A	N/A	N/A
Number of regional conference papers submitted	0	0	0
Number of regional conference papers accepted	0	0	0
<i>DATE, CONFERENCE AND NAME OF PRESENTATION(S)</i>	N/A	N/A	N/A

ANNUAL REPORT

Does the Center or Institute produce an annual report? If so, please have copies available or provide the web link.

Yes. Copies of the annual report are sent to the Dean's office at the end of each fiscal year.

STUDENT PUBLICATIONS

	2007–2008	2010–2011	2011–2012
Number of student theses credited to or associated with the C/I	0	0	0
Number of dissertations	0	0	0
Number of any other student papers	0	0	0

PROFESSIONAL DEVELOPMENT AND ASSISTANCE**Consulting**

	2007–2008	2010–2011	2011–2012
Number of consulting contracts	0	0	0
Name of consulting recipient(s)	N/A	N/A	N/A
Consulting Subject or Topic	N/A	N/A	N/A
Amount of funding provided through general funds of the C/I	0	0	0
Amount of funding obtained through contract in addition to general C/I funds	0	0	0

Technical Assistance

	2007–2008	2010–2011	2011–2012
Number of technical assistance sessions or seminars offered	0	0	0
Name of technical assistance recipient(s)	N/A	N/A	N/A
Technical Assistance Subject or Topic	N/A	N/A	N/A
Amount of Funding	0	0	0

CONFERENCES OR SYMPOSIA

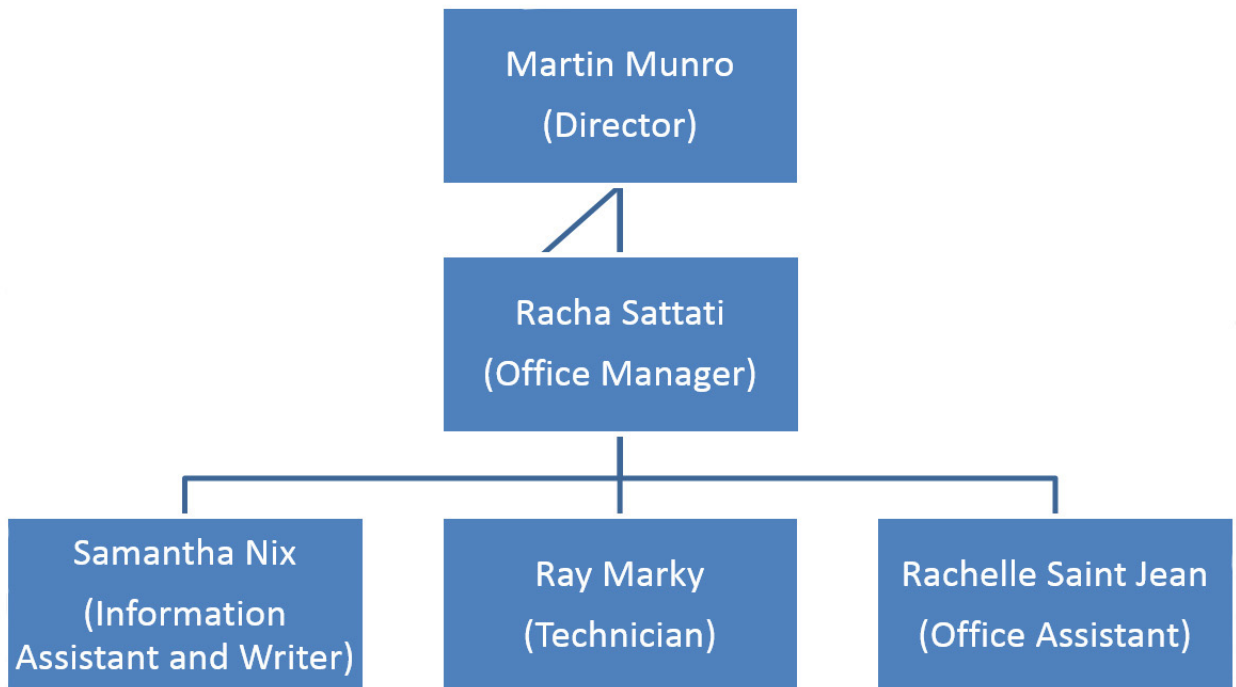
How many conferences or symposia has the Center or Institute sponsored or hosted during this reporting period? Please list.

32. Listing available upon request.

Comments or additional information

MANAGEMENT

Center/Institute organizational chart



<i>Is the Center or Institute legislatively created?</i>	No
<i>Does the Center/Institute have an advisory board?</i>	Yes
<i>How often are meetings held?</i>	Yearly
<i>Does the board manage the C/I or does it serve in an advisory capacity?</i>	Advisory
<i>Please describe and include a list of current members.</i>	N/A
<i>How long has the Center/Institute director served?</i>	One year
<i>How does the Center/Institute directorship change?</i>	Recruitment process
<i>Are there other issues associated with management transition?</i>	No
<i>If there are multiple sites, how are they administered? Who has the final oversight?</i>	N/A
<i>Comments or additional information</i>	
ADDITIONAL ISSUES	
<i>Issues facing the Center or Institute</i>	None

OVERALL EVALUATION

- ✓ The Winthrop-King Institute for French and Francophone Studies is meeting its mission of being a center for interdisciplinary scholarship on France and the wider French-speaking world, being at the forefront of developments in the field, and continuing to play a leading role in promoting French and Francophone studies locally, nationally, and internationally. Its activities include: supporting research which has resulted in numerous publications, supporting graduate students and faculty through conference and research grants, providing extensive events and conferences that increase collaboration among disciplines, and sponsoring outreach opportunities locally for high school students.
- ✓ In 2011-2012, the Institute received \$162,326 of E&G funding, and the return on E&G investment is 1:4.
- ✓ The Center should continue its work. The Institute has been very active in providing valuable assistance in conformance with several Board of Governors mission statements: strengthening quality and reputation of scholarship, research, academic programs, and universities; increasing collaboration and levels of community engagement, and to increase external support for research activity. The Institute distributes a significant amount of support to students through scholarships and travel grants.
- ✓ No changes are necessary to its mission or organizational structure.
- ✓ The Institute is funded by university, state, and private/nonprofit funds. Because they received funds from an endowment, they expect their funding will continue, but have challenges supporting their activities with the recent loss of faculty.
- ✓ No change in classification is needed.
- ✓ Retain active status.

INSTITUTE ON NAPOLEON AND THE FRENCH REVOLUTION

401 Bellamy
Tallahassee, FL 32306-2200

Phone: (850) 644-5888
Director: Rafe Blaufarb
rblaufarb@fsu.edu
(850) 644-5888
Budget and funding contact: Carmen Bernal
cbernal@fsu.edu
(850) 644-5888
Web site: www.fsu.edu/~Napoleon

*If multidisciplinary, please list
departments associated with C/I.*

N/A

MISSION AND ACTIVITIES

*What is the Center's or Institute's
mission statement?*

The Institute on Napoleon and the French Revolution (INFR) is dedicated to advancing the historical understanding of the revolutionary era (1750-1850). It does so primarily by encouraging graduate degrees (MA and Ph.D.) in this area of history, encouraging innovative archival research and publication, and participating in national and international professional associations of revolutionary-era historians. The Institute also pursues its mission by offering a range of popular undergraduate courses at FSU. Outside of France, the INFR is the only research center and MA/doctoral program specifically focused on the age of Napoleon and the French Revolution.

Briefly, what activities are consistently performed that move the Center/Institute toward meeting its established mission? This section should also include activities related to meeting the State Board of Governor's mission. The State Board of Governors mission includes the following:

1. *Strengthen Quality & Reputation of Academic Programs and Universities*
2. *Increase Degree Productivity and Program Efficiency*
3. *Increase the Number of Degrees Awarded in STEM and Other Areas of Strategic Emphasis*
4. *Strengthen Quality and Reputation of Scholarship, Research and Innovation*
5. *Increase Research and Commercialization Activity*
6. *Increase Collaboration and External Support for Research Activity*
7. *Strengthen Quality and Recognition of Commitment to Community and Business Engagement*
8. *Increase Levels of Community and Business Engagement*
9. *Increase Community and Business Workforce*

The activities described below support the following elements of the Board of Governors Mission: strengthen quality and reputation of academic programs and universities; strengthen quality and reputation of scholarship, research and innovation; increase collaboration and external support for research activity; and increase levels of community and business engagement.

Activities:

- a. Supervising doctoral dissertations and MA theses. Since the establishment of the INFR by the Florida Board of Regents in 1990, INFR students have successfully completed about 50 doctoral dissertations and 60 MA theses. There are currently over 20 MA and doctoral students in the INFR.
- b. Preparing future history faculty for successful academic careers. Since the inception of the INFR, its doctoral graduates have taken positions at a wide range of colleges and universities, from California to New York, from Michigan to Louisiana. Over a dozen have taught in the history department at the U.S. Military Academy at West Point.
- c. Sponsoring lectures and seminars by prominent national and international scholars. Since 2007 revolutionary and Napoleonic historians from leading universities in the United States and Europe have been invited to the INFR for this purpose. These scholars have come from universities such as Harvard, Princeton, the Sorbonne, the University of Exeter, and the University of Amsterdam to guest-teach courses, give public talks, and conduct research at the INFR and the Napoleon Collection in the Strozier Library.
- d. Participating in national and international professional organizations. FSU, through the INFR, is a founding member of the Consortium on the Revolutionary Era, the leading national association of revolutionary-era historians. The director of the INFR sits on the board of directors of the Consortium, and INFR students have presented hundreds of papers at its annual meeting. FSU has hosted the Consortium's annual meeting six times since its foundation in 1971, most recently in March 2011.
- e. Fundraising. The director of the INFR is actively involved in seeking gifts from private donors to increase the existing endowments, particularly those which pay for graduate student stipends. Since 2007, he has raised approximately \$140,000, and gift agreements have been arranged between private donors and the FSU Foundation for a further \$80,000 to be paid over the next several years.

- f. Public outreach. The faculty of the INFR have engaged in public outreach to spread understanding of and interest in the history of the revolutionary and Napoleonic period. They have made numerous radio and television appearances in the United States, Europe, South America, and Australia. They have written pieces for many newspapers and popular magazines, ranging from The New York Times and Wall Street Journal to Military History magazine. They have given scores of public lectures and have also made several podcasts available on the internet.

What is the Center or Institute best known for?

Founded in 1990, the Institute enjoys an international reputation as the leading graduate program in the history of the revolutionary and Napoleonic era in the English-speaking world. It has attracted students from all across the United States, as well as from abroad (Canada, Israel, Russia, and Georgia). Since the inception of the INFR, its students have completed well over 100 doctoral dissertations and MA theses. Its graduates have gone on to successful academic careers, teaching at colleges and universities across the United States.

What is the greatest strength of the Center or Institute?

The Institute's greatest strength is to generate a critical intellectual mass by bringing together professors, graduate students, and visiting specialists all dedicated to the study of the revolutionary and Napoleonic era. This concentration of energy and expertise creates the dynamic environment required for a successful graduate program, for innovative research, and vigorous publication. Since its establishment, the Institute faculty, graduates, and graduate students have published dozens of academic monographs, scores of refereed articles, and made hundreds of conference presentations.

What are the most significant challenges facing the Center or Institute?

The Institute has no dedicated administrative support staff. This means that the director has to spend valuable time handling routine bureaucratic matters instead of teaching, conducting research, fundraising, and engaging in outreach. A dedicated administrative assistant would be a very helpful addition. A dedicated administrative assistant with competency in web-design and web-maintenance would help further enhance the INFR's profile.

FUNDING (2007–2008 THROUGH 2011–2012)

What is the source and amount of expenditures from 2007-2008 to 2011-2012 for the Center/Institute using the following categories?

Expenditures	2007–2008	2010–2011	2011–2012
University (E&G)	\$20,000	\$20,000	\$20,000
State (General Revenue Other than E&G)	0	0	0
State (C&G)	0	0	0
Federal	0	0	0
Local	0	0	0
Private / nonprofit organization	\$480	\$5,363	\$5,000
Endowment proceeds	\$64,893	\$120,418	\$75,072
Proceeds from patents or royalties	0	0	0
Sales from services or products	0	0	0
Others (specify)	0	0	0
Total expenditures	\$85,373	\$145,781	\$100,072

ENDOWMENT INFORMATION

<i>Is the Center/Institute supported in whole or in part by proceeds from an endowment?</i>	Yes
<i>What is the amount of the endowment?</i>	\$2,076,500
<i>Where is the endowment managed?</i>	FSU Foundation
<i>Does the C/I spend only interest earnings?</i>	Yes
<i>Does the C/I spend part of the capital of the endowment?</i>	No

CONTRACT AND GRANT INFORMATION

	2007–2008	2010–2011	2011–2012
Number of proposals submitted	N/A	N/A	N/A
Number of proposals funded	N/A	N/A	N/A
Proposals Made Jointly with Individuals not Directly associated with the Center / Institute	N/A	N/A	N/A
Total amount of awards	N/A	N/A	N/A

Were any of the contracts or grants multi-year? N/A

How many years does the Center or Institute have left on any current contract or grant? N/A

Have any contracts or grants been renewed in the reporting period and, if so, how many? N/A

OTHER CENTER OR INSTITUTE ACTIVITIES

Has the Center/Institute generated any patents or royalties? No

Has the Center or Institute applied for a patent that has not yet been granted? If so, please describe. N/A

EMPLOYMENT
(2007–2008 THROUGH 2011–2012)

UNIVERSITY POSITIONS ASSOCIATED WITH THE C/I:

	2007–2008	2010–2011	2011–2012
Number of Faculty (FTE)	2	2	2
Number of A&P and USPS positions (FTE)	0	0	0
Total Positions	2	2	2

STUDENT EMPLOYMENT (INCLUDE GRADUATE AND UNDERGRADUATE):

	2007–2008	2010–2011	2011–2012
Number of research assistants employed (FTE)	3	5	4
Number of teaching assistants employed (FTE)	0	0	0
Number of interns (with stipend or OPS)	0	0	0
Number of interns (without pay)	0	0	0
Total student positions	3	5	4

OTHER STUDENT FINANCIAL BENEFITS
(INCLUDING GRADUATE AND UNDERGRADUATE):

	2007–2008	2010–2011	2011–2012
	Number/Amount	Number/Amount	Number/Amount
Out of state tuition waivers	0/0	0/0	1/\$6,316
Student fellowships	0/0	0/0	0/0
Scholarships	0/0	0/0	0/0
Post-doctoral support	0/0	0/0	0/0
Amt of student travel support including conference registration	2/\$1,630	6/\$20,097	3/\$6,000
Other support	0/0	0/0	0/0

Comments or additional information

RESEARCH AND EXTENSION (2007–2008 THROUGH 2011–2012)

Note: web-delivered and CD-Rom publications are counted in these totals.

MONOGRAPHS (SINGLE-AUTHORED BOOKS BASED ON PRIMARY RESEARCH) PUBLISHED

Note: Do not include those credited to a faculty member's primary academic department that are unrelated to the C/I mission.

Number of faculty publications	0	0	1
Number of student publications	0	0	0

EDITED VOLUMES PUBLISHED

Note: Do not include those credited to a faculty member's primary academic department that are unrelated to the C/I mission.

	2007–2008	2010–2011	2011–2012
Number of faculty publications	1	1	1
Number of student publications	0	1	0

PUBLICATIONS IN REFEREED JOURNALS

Note: Do not include those credited to a faculty member's primary academic department that are unrelated to the C/I mission.

	2007–2008	2010–2011	2011–2012
Number of faculty publications	6	6	0
Number of student publications	2	1	1
Number of publications authored jointly with other faculty at FSU	0	0	0
Number of publications authored jointly with students in the C/I	0	0	0
Number of publications authored jointly with faculty at locations other than FSU	0	0	0

Please have a list of relevant publications available if requested.

OTHER PUBLICATIONS AND CONFERENCE PAPERS

	2007–2008	2010–2011	2011–2012
Number of extension or outreach publications	1	0	0
Number of national conference papers submitted	3	2	2
Number of national conference papers accepted	3	2	2
<i>DATE, CONFERENCE AND NAME OF PRESENTATION(S)</i>	*	*	*
Number of inter. conference papers submitted	7	0	4
Number of inter. conference papers accepted	7	0	4
<i>DATE, CONFERENCE AND NAME OF PRESENTATION(S)</i>	**	0	**

**National Conference Presentations by Faculty:

2007-2008:

1. Western Society for French History (November 2007)
2. Consortium on the Revolutionary Era (February 2008)
3. Liberty Fund (February 2008)

2010-2011:

1. Western Society for French History (October 2010)
2. Newberry Library Legal History Symposium (April 2011)

2011-2012

1. 2 papers at the American Historical Association (January 2012)

**International Conference Presentations by Faculty:

2007-2008:

1. Napoleon and the Americas Conference, University of Toulouse, France (June 2007)
2. 12th International Congress on the Enlightenment, University of Montpellier, France (July 2007)\
3. Society for French History, University of St. Andrews, Scotland (July 2007)
4. Conference on the French Revolution, University of Sussex, England (July 2007)
5. 29th Journees Internationales d'Histoire, Abbe de Flaran, France (October 2007)
6. Conference on the Quest for Stability after War, University of Utrecht, The Netherlands (December 2007)
7. The Napoleonic Empire and the Creation of Modern Political Culture, Centro de Estudios Politicos, Madrid, Spain (April 2008)

NATIONAL KEYNOTE SPEECHES & INVITED LECTURES (FACULTY)

2007-2008:

1. University of New England (September 2007)
2. Brandeis University (October 2007)
3. Salk Institute (October-November 2007)
4. Consortium on the Revolutionary Era (February 2008)

2010-2011:

1. Tulane University (September 2010)
2. Stanford University (October 2010)
3. Harvard University (December 2010)
4. 2 speeches at the University of Pennsylvania (January 2011)

2011-2012:

1. Aspen Ideals Festival (June 2011)
2. Florida Department of Health Dependency Summit (August 2011) – over 3,000 in the audience

INTERNATIONAL KEYNOTE SPEECHES & INVITED LECTURES (FACULTY)

2007-2008:

1. Culturgest, Lisbon, Portugal (May 2007)
2. Globo Universidade, Rio de Janeiro, Brazil (June 2007)

2010-2011:

1. University of Amsterdam, Amsterdam, The Netherlands (April 2011)
2. University of Bordeaux, Bordeaux, France (April 2011)
3. University of Grenoble, Grenoble, France (May 2011)
4. University of Aberdeen, Aberdeen, Scotland (June 2011)

2011-2012:

1. University of Oxford, Oxford, England (November 2011)
2. Czech Academy of Sciences, Prague, Czech Republic (December 2011)
3. Institute on Historical Research, London, England (January 2012)
4. University of London, London, England (February 2012)
5. Institute on Historical Research, London, England (March 2012)
6. University of Oxford, Oxford, England (May 2012)
7. University of Amsterdam, Amsterdam, The Netherlands (May 2012)
8. Ecole des Hautes Etudes en Sciences Sociales, Paris, France (May 2012)

INVITED PROFESSORSHIPS HELD BY FACULTY

2008-2009:

- Ecole des Hautes Etudes en Sciences Sociales, Paris, France (February 2009)
University of Limoges, Limoges, France (March 2009)
Institut National de Recherches Agronomiques, Paris, France (Spring 2009 semester)
University of Rouen, Rouen, France (May 2009)

2009-2011:

- Ecole Normale Supérieure, Paris, France (Full Academic year)

2010-2011:

- University of Bordeaux, Bordeaux, France (April 2011)
University of Grenoble, Grenoble, France (May and June 2011)

2011-2012:

University of York (Fall 2011 Semester)

University of Potsdam, Berlin, Germany (Full academic year)

FACULTY HONORS & AWARDS**2007-2008:**

International Napoleonic Society Book Prize

FSU Graduate Teaching Award

2010-2011:

Alexander Humboldt Fellowship for Experienced Researchers

2010-2011:

William Koren Prize of the Society for French Historical Studies for the Best Peer-Reviewed Journal Article in French History Published in 2010

NATIONAL CONFERENCE PRESENTATIONS BY GRADUATE STUDENTS**2007-2008:**

1. 2 papers at the Consortium on the Revolutionary Era (February 2008)

2010-2011:

1. 3 papers at the Western Society for French History (October 2010)

2. 1 paper at the Consortium on the Revolutionary Era (March 2011)

2011-2012

1. New Directions in Haitian Studies Conference, NYU (January 2012)

2. Consortium on the Revolutionary Era (February 2012)

INTERNATIONAL CONFERENCE PRESENTATIONS BY GRADUATE STUDENTS**2010-2011:**

1. 7th International Napoleonic Society, Montreal, Canada (June 2010)

2011-2012:

1. Napoleon's Continental System, International Institute of Social History, Amsterdam, The Netherlands (May 2011)

ANNUAL REPORT

Does the Center or Institute produce an annual report? If so, please have copies available or provide the web link.

Yes. Copies available upon request.

STUDENT PUBLICATIONS

	2007–2008	2010–2011	2011–2012
Number of student theses credited to or associated with the C/I	1	2	1
Number of dissertations	1	1	0
Number of any other student papers	0	3	0

PROFESSIONAL DEVELOPMENT AND ASSISTANCE

Consulting

	2007–2008	2010–2011	2011–2012
Number of consulting contracts	0	0	0
Name of consulting recipient(s)	N/A	N/A	N/A
Consulting Subject or Topic	N/A	N/A	N/A
Amount of funding provided through general funds of the C/I	0	0	0
Amount of funding obtained through contract in addition to general C/I funds	0	0	0

Technical Assistance

	2007–2008	2010–2011	2011–2012
Number of technical assistance sessions or seminars offered	0	0	0
Name of technical assistance recipient(s)	N/A	N/A	N/A
Technical Assistance Subject or Topic	N/A	N/A	N/A
Amount of Funding	0	0	0

CONFERENCES OR SYMPOSIA

How many conferences or symposia has the Center or Institute sponsored or hosted during this reporting period? Please list.

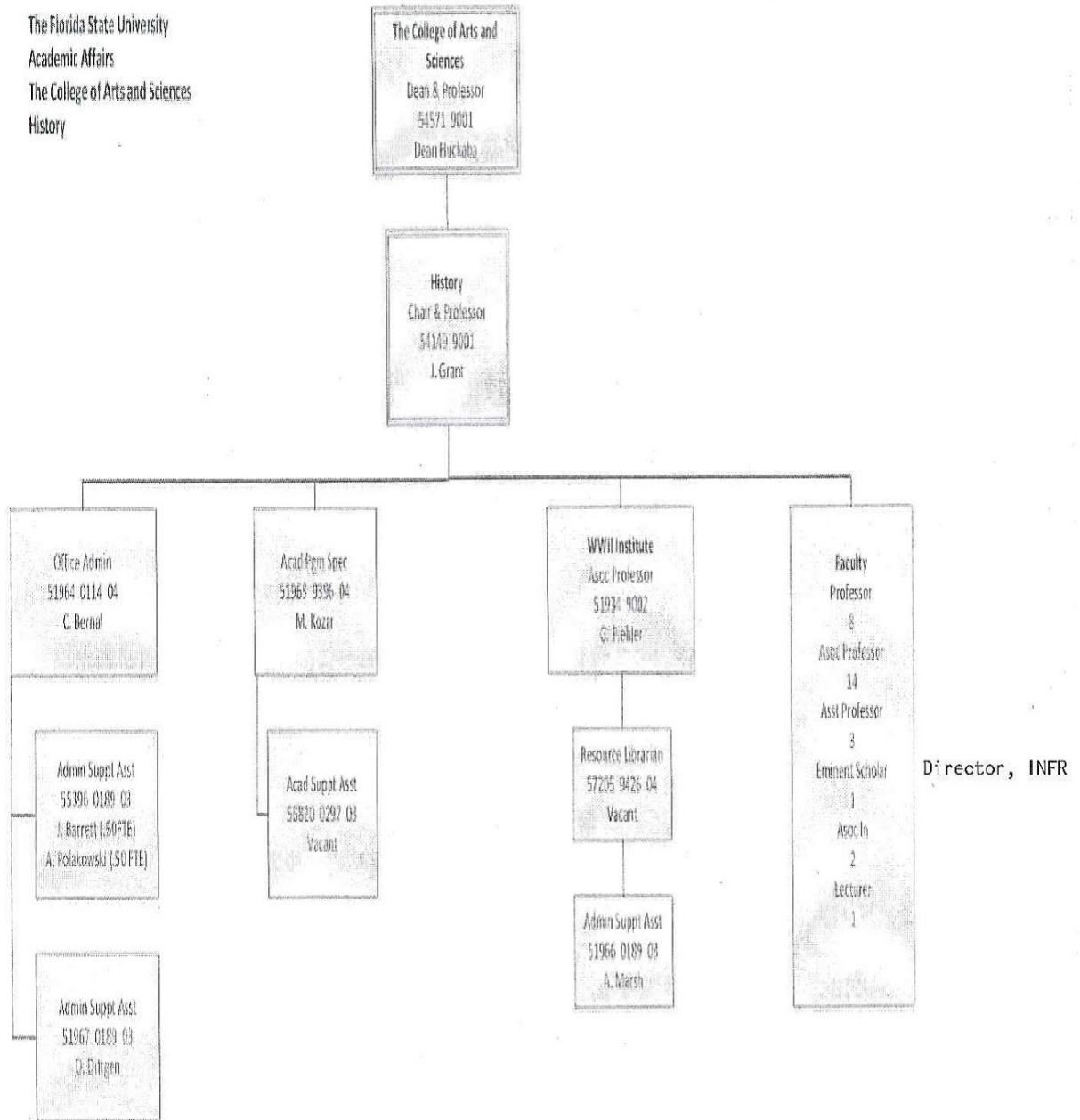
Two

1. Workshop on the Revolutionary Atlantic (Tallahassee, May 2007): brought together about 12 distinguished scholars from the US and abroad to discuss current research trends concerning the history of the Haitian Revolution
2. Consortium on the Revolutionary Era (Tallahassee, March 2011): annual conference of the leading US conference on the study of the revolutionary era, 1750-1850. 175 attendees.

Comments or additional information

MANAGEMENT

Center/Institute organizational chart



<i>Is the Center or Institute legislatively created?</i>	No
<i>Does the Center/Institute have an advisory board?</i>	No
<i>How often are meetings held?</i>	N/A
<i>Does the board manage the C/I or does it serve in an advisory capacity?</i>	N/A
<i>Please describe and include a list of current members.</i>	N/A
<i>How long has the Center/Institute director served?</i>	Since August 2006
<i>How does the Center/Institute directorship change?</i>	The director is a faculty member, the holder of the Ben Weider Eminent Scholar Chair. The directorship would change if that faculty member resigned or retired and was replaced by the history department's normal hiring process.
<i>Are there other issues associated with management transition?</i>	No
<i>If there are multiple sites, how are they administered? Who has the final oversight?</i>	N/A
<i>Comments or additional information</i>	
ADDITIONAL ISSUES	
<i>Issues facing the Center or Institute</i>	None

OVERALL EVALUATION

- ✓ The Institute on Napoleon and the French Revolution is meeting its mission of advancing the historical understanding of the revolutionary era (1750-1850). It sponsors numerous presentations to national and international conferences and brings noted scholars to campus from the United States and Europe. These interactions support the development of monographs and articles in refereed-journals in addition to masters theses and doctoral dissertations. Public outreach activities are also an important part of the Institute's activities, including radio and television appearances in the United States, Europe, South America and Australia.
- ✓ The return on E&G investment is 1:4. That is, for each dollar of E&G, the Institute generates an additional four dollars.
- ✓ The Institute should continue its work. In support of its mission, assistance to masters and doctoral students is provided, through employment of research assistants, student travel grants and presentations at national and international conferences. It has resulted in numerous keynote speeches and invited lectures for faculty, increasing the visibility of FSU's scholarly community. Finally, outside of France, it is the only research center and graduate program specifically focused on the age of Napoleon and the French Revolution.
- ✓ There is no need to change their mission or organizational structure.
- ✓ The Institute is funded primarily through endowment proceeds, along with some E&G and private funding. This funding structure is expected to continue, with the Director continuing to encourage gifts from private donors to increase the size of the endowment. Addition of administrative support would be helpful.
- ✓ No change in classification is needed.
- ✓ Retain active status.

CENTER FOR ACADEMIC & PROFESSIONAL DEVELOPMENT

555 W. Pensacola St.
Tallahassee, FL 32306-1640

Phone: (850) 644-3801
Director: Bill Lindner
blindner@fsu.edu
(850) 644-7572
Budget and funding contact: Leslie Sawyer
lsawyer@fsu.edu
(850) 644-9949
Web site: learningforlife.fsu.edu

*If multidisciplinary, please list
departments associated with C/I.*

N/A

MISSION AND ACTIVITIES

*What is the Center's or Institute's
mission statement?*

The mission of the Center for Academic and Professional Development is to extend the resources of the University to promote learning for life.

Briefly, what activities are consistently performed that move the Center/Institute toward meeting its established mission? This section should also include activities related to meeting the State Board of Governor's mission. The State Board of Governors mission includes the following:

1. *Strengthen Quality & Reputation of Academic Programs and Universities*
2. *Increase Degree Productivity and Program Efficiency*
3. *Increase the Number of Degrees Awarded in STEM and Other Areas of Strategic Emphasis*
4. *Strengthen Quality and Reputation of Scholarship, Research and Innovation*
5. *Increase Research and Commercialization Activity*
6. *Increase Collaboration and External Support for Research Activity*
7. *Strengthen Quality and Recognition of Commitment to Community and Business Engagement*
8. *Increase Levels of Community and Business Engagement*
9. *Increase Community and Business Workforce*

Activities:

- a. The Center for Academic and Professional Development (CAPD) is the instructional outreach arm of the University. As such, it is responsible for developing, coordinating and managing educational outreach activities sponsored by the University. The Center works to bring together outstanding resources from the University and beyond for the purpose of offering life-long learning opportunities, at an academic and/or content level which complements and extends the offerings of secondary and lower division postsecondary institutions, to meet personal aspirations for professional development and advancement for life enrichment.
- b. The FSU Conference Center, operated by CAPD, is intended for academic conferences, government meetings, association programs, corporate seminars and other numerous professional development events. The Florida State Conference Center provides government agencies, non-profit and private sector groups a state-of-the-art facility while promoting FSU to our community. The Center staff continues to expand programs with a continued focus on FSU academic meetings and conferences and partnership opportunities with FSU faculty, alumni and professionals in the community.
- c. Through social media and other marketing strategies, the Center works to attract a new customer base to the programs, facility offerings, and FSU campus. CAPD utilizes technology as a strategy to expand the reach beyond campus space with live and on-demand webcasting to capture important events, presentations, and discussions. It leverages on-site events to encourage the professional development training opportunities and extend their lifespan with event and learning engagement.
- d. The Center is designated as the continuing education arm of FSU and offers the more non-traditional students an opportunity to study and receive academic credit or CEUs during the year. Sponsored credit institutes, in conjunction with University colleges, provide educators and professionals an excellent opportunity to study during the summer in intensive workshops for credit or continuing education options on campus.
- e. The Center offers continuing education courses for professionals to meet the requirements needed to maintain their licenses as well as workshops, online courses and certification programs tailored to provide the skills needed to be successful in today's workforce.

What is the Center or Institute best known for?

The Center is best known for its role as the continuing education arm of FSU and the management of the FSU Conference Center.

What is the greatest strength of the Center or Institute?

Its people and their commitment to the non-traditional student and customer service.

What are the most significant challenges facing the Center or Institute?

Trying to keep cutting edge and offer stimulating programs with diminishing resources.

FUNDING **(2007–2008 THROUGH 2011–2012)**

What is the source and amount of expenditures from 2007-2008 to 2011-2012 for the Center/Institute using the following categories?

Expenditures	2007–2008	2010–2011	2011–2012
University (E&G)	\$1,088,208	\$933,884	\$792,191
State (General Revenue Other than E&G)	N/A	0	0
State (C&G)	N/A	\$10,000	\$8,750
Federal	0	0	0
Local	0	0	0
Private / nonprofit organization	\$102,793	\$57,899	\$43,144
Endowment proceeds	0	0	0
Proceeds from patents or royalties	0	0	0
Sales from services or products	\$3,569,091	\$5,560,901	\$4,607,156
Others (specify)	0	0	0
Total expenditures	\$4,760,092	\$6,562,684	\$5,451,241

ENDOWMENT INFORMATION

Is the Center/Institute supported in whole or in part by proceeds from an endowment? No

What is the amount of the endowment? NA

Where is the endowment managed? NA

Does the C/I spend only interest earnings? NA

Does the C/I spend part of the capital of the endowment? NA

CONTRACT AND GRANT INFORMATION

	2007–2008	2010–2011	2011–2012
Number of proposals submitted	0	1	1
Number of proposals funded	0	1	1
Proposals Made Jointly with Individuals not directly associated with the Center / Institute	0	0	0
Total amount of awards	0	\$10,000	\$8,750

****NOTE:** Proposals submitted during a fiscal year are not necessarily funded in the same fiscal year or are awards and/or transfers from an existing award. Therefore, the number of proposals funded and total amount of awards includes data on all proposal funding received for this period of time.

Were any of the contracts or grants multi-year? No

How many years does the Center or Institute have left on any current contract or grant? None

Have any contracts or grants been renewed in the reporting period and, if so, how many? No

OTHER CENTER OR INSTITUTE ACTIVITIES

Has the Center/Institute generated any patents or royalties? No

Has the Center or Institute applied for a patent that has not yet been granted? If so, please describe. No

EMPLOYMENT
(2007–2008 THROUGH 2011–2012)
UNIVERSITY POSITIONS ASSOCIATED WITH THE C/I:

	2007–2008	2010–2011	2011–2012
Number of Faculty (FTE)	1	6	6
Number of A&P and USPS positions (FTE)	22	30.5	31.5
Total Positions	23	36.5	37.5

STUDENT EMPLOYMENT (INCLUDE GRADUATE AND UNDERGRADUATE):

	2007–2008	2010–2011	2011–2012
Number of research assistants employed (FTE)	0	0	0
Number of teaching assistants employed (FTE)	0	0	0
Number of interns (with stipend or OPS)	0	0	0
Number of interns (without pay)	0	2	0
Total student positions	0	2	0

**OTHER STUDENT FINANCIAL BENEFITS
(INCLUDING GRADUATE AND UNDERGRADUATE):**

	2007–2008	2010–2011	2011–2012
	Number/Amount	Number/Amount	Number/Amount
Out of state tuition waivers	0/0	0/0	0/0
Student fellowships	0/0	0/0	0/0
Scholarships	16/\$21,184	17/\$28,292	4/\$8,917
Post-doctoral support	0/0	0/0	0/0
Amt of student travel support	0/0	0/0	0/0
Amt of registration for student conference attendance	0/0	0/0	0/0
Other support	0/0	0/0	0/0

Comments or additional information

**RESEARCH AND EXTENSION
(2007–2008 THROUGH 2011–2012)**

Note: web-delivered and CD-Rom publications are counted in these totals.

PUBLICATIONS IN REFEREED JOURNALS

Note: Do not include those credited to a faculty member's primary academic department that are unrelated to the C/I mission.

	2007–2008	2010–2011	2011–2012
Number of faculty publications	0	0	0
Number of student publications	0	0	0
Number of publications authored jointly with other faculty at FSU	0	0	0
Number of publications authored jointly with students in the C/I	0	0	0
Number of publications authored jointly with faculty at locations other than FSU	0	0	0

Please have a list of relevant publications available if requested.

OTHER PUBLICATIONS AND CONFERENCE PAPERS

	2007–2008	2010–2011	2011–2012
Number of extension or outreach publications	0	0	0
Number of national conference papers submitted	0	0	0
Number of national conference papers accepted	0	0	0
<i>DATE, CONFERENCE AND NAME OF PRESENTATION(S)</i>	0	0	0
Number of regional conference papers submitted	0	0	0
Number of regional conference papers accepted	0	0	0
<i>DATE, CONFERENCE AND NAME OF PRESENTATION(S)</i>	0	0	0

ANNUAL REPORT

Does the Center or Institute produce an annual report? If so, please have copies available or provide the web link.

No

STUDENT PUBLICATIONS

	2007–2008	2010–2011	2011–2012
Number of student theses credited to or associated with the C/I	0	0	0
Number of dissertations	0	0	0
Number of any other student papers	0	0	0

PROFESSIONAL DEVELOPMENT AND ASSISTANCE

Consulting

	2007–2008	2010–2011	2011–2012
Number of consulting contracts	0	0	0
Name of consulting recipient(s)	N/A	N/A	N/A
Consulting Subject or Topic	N/A	N/A	N/A
Amount of funding provided through general funds of the C/I	0	0	0
Amount of funding obtained through contract in addition to general C/I funds	0	0	0

Technical Assistance

	2007–2008	2010–2011	2011–2012
Number of technical assistance sessions or seminars offered	0	0	0
Name of technical assistance recipient(s)	N/A	N/A	N/A
Technical Assistance Subject or Topic	N/A	N/A	N/A
Amount of Funding	0	0	0

CONFERENCES OR SYMPOSIA

How many conferences or symposia has the Center or Institute sponsored or hosted during this reporting period? Please list.

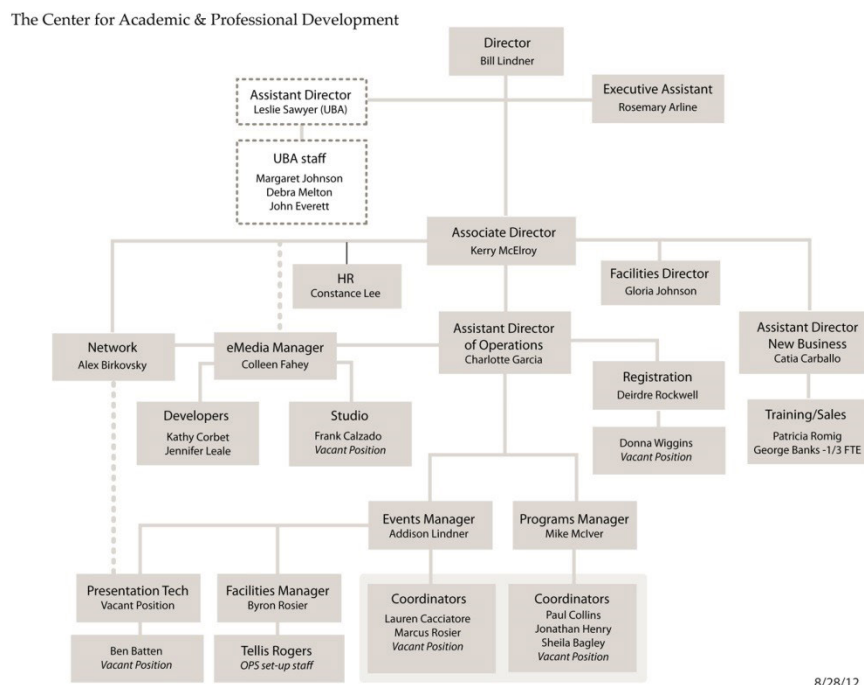
Approximately 500 total. List available on request.

Comments or additional information

The Center manages the Florida State Conference Center. Organizing and hosting conferences or symposia is a primary part of the Center's mission. It typically hosts about 200 each year. During part of the reporting period, the Center was being rebuilt and hosted little. The programs at the time fell under professional development/online courses rather than conferences and symposia.

MANAGEMENT

Center/Institute organizational
chart



8/28/12

Is the Center or Institute
legislatively created?

Yes

Does the Center/Institute have an
advisory board?

No

How often are meetings held?

N/A

Does the board manage the C/I
or does it serve in an advisory
capacity?

N/A

Please describe and include a list of
current members.

N/A

How long has the Center/Institute
director served?

Since 1999

How does the Center/Institute
directorship change?

By appointment from FSU executive administration

Are there other issues associated with management transition? No

If there are multiple sites, how are they administered? Who has the final oversight? N/A

Comments or additional information

ADDITIONAL ISSUES

Issues facing the Center or Institute None

OVERALL EVALUATION

- ✓ The Center for Academic & Professional Development (CAPD) is meeting its broad mission of promoting learning for life in several ways. Through its operation of the FSU Conference Center, numerous academic conferences, government meetings, association programs, corporate seminars and other professional development events are offered. The Florida State Conference Center provides government agencies, non-profit and private sector groups a state-of-the-art facility in which to host their educational events. CAPD also coordinates continuing education activities at FSU.
- ✓ The E&G return on investment is 1:5.88.
- ✓ The Center should continue its work. It employs over 37 FTE and provides over 200 opportunities each year for learning through the use of the FSU Conference Center. These conferences and symposia offer instruction to non-traditional students and to the general public.
- ✓ There is no need to change their organizational mission or structure.
- ✓ The majority of CAPD's funding is through sales from the use of the Conference Center. A smaller amount of E&G funding is also available. There appears to be no need to change this funding structure, as it appears capable of supporting the Center's activities.
- ✓ No change in classification is needed.
- ✓ Retain active status. The center is not an academic unit, but an operational arm of the university facilitating professional development and continuing education. It should be deleted from the Center list, retain its name and continue in its operational role.

INFORMATION USE MANAGEMENT AND POLICY INSTITUTE

142 Collegiate Loop
P.O. Box 3062100
Tallahassee, FL 32306-2100

Phone: (850) 645-5683
Director: Dr. Charles R. McClure
cmcclure@lis.fsu.edu
(850) 644-8109
Budget and funding contact: Shonda Sampson
srsampson@admin.fsu.edu
(850) 644-3744
Web site: <http://ii.fsu.edu>

*If multidisciplinary, please list
departments associated with C/I.*

The School of Library and Information Studies and the
College of Communication and Information

MISSION AND ACTIVITIES

*What is the Center's or Institute's
mission statement?*

The mission of the Institute is to develop and implement applied research and policy studies that improve the quality, effectiveness, and productivity of individuals and organizations' use and management of information resources and services. The Institute is especially interested in the social and behavioral aspects regarding access to, the use of, and management of information and information technology.

Briefly, what activities are consistently performed that move the Center/Institute toward meeting its established mission? This section should also include activities related to meeting the State Board of Governor's mission. The State Board of Governors mission includes the following:

1. *Strengthen Quality & Reputation of Academic Programs and Universities*
2. *Increase Degree Productivity and Program Efficiency*
3. *Increase the Number of Degrees Awarded in STEM and Other Areas of Strategic Emphasis*
4. *Strengthen Quality and Reputation of Scholarship, Research and Innovation*
5. *Increase Research and Commercialization Activity*
6. *Increase Collaboration and External Support for Research Activity*
7. *Strengthen Quality and Recognition of Commitment to Community and Business Engagement*
8. *Increase Levels of Community and Business Engagement*
9. *Increase Community and Business Workforce*

Activities:

The Information Institute engages in a number of activities to accomplish its mission, as well as to support the mission described by the State Board of Governors. Some examples of these activities include the following:

- **Conducting Ongoing Externally Funded Research.** As described later in this report, the Information Institute has had many funded research projects and a number of initiatives. Funding agencies include foundations, state library agencies, the U.S. Institute of Museum and Library Services, the American Library Association, and others. Since the Information Institute's inception in 1999 it has obtained \$5.3 million to support applied and policy research, student assistantships, Institute staff positions, and more. This increases research, increases external support for research activity, and strengthens quality and reputation of scholarship, research, and innovation.
- **Obtaining National and International Visibility.** Over the years, the Information Institute has been invited to participate in high visibility events sponsored by, for example, the Bill & Melinda Gates Foundation, the Northumbria Conference in Performance Measurement (UK), the American Library Association Washington D.C. Office, and others. This visibility has contributed to supporting the overall visibility and credibility of the School of Library and Information Studies (SLIS), the College of Communication & Information (CCI), and the Florida State University. This visibility and credibility is represented in SLIS' recent national ranking as the 13th best information studies program in the nation. This increases the quality and reputation of academic programs and the university.
- **Providing Service to the State of Florida.** During 2011-2012, for example, the Information Institute completed broadband telecommunications needs assessments for rural counties in Florida through the North Florida Rural Broadband Authority (NFBA) and the Florida Rural Broadband Alliance (FRBA). These projects had Information Institute staff conducting on-site broadband needs assessments throughout rural counties, assisting them with improving their broadband and computing capacity, and improving the competitiveness of these rural counties to attract and create technology related jobs.

The Institute also completed 3 projects for the Department of State, State Library of Florida as part of the Service to the State of Florida:

1. The overall goals of the 2007-2008 efforts were to:
 - (1) improve the success by which the Florida Electronic Library (FEL) meets the information needs of the residents of the state of Florida, the library community, and other users of the FEL;
 - (2) assist in ongoing data collection, reporting strategies, and analysis of that data to describe the status and success of the FEL; and
 - (3) offer recommendations and possible strategies to increase the impact and use of the FEL. These goals were to help assure the establishment of ongoing assessment, fine-tuning, and improvement of the FEL.
2. The goal of the second project was to assist the State Library in
 - (1) collecting and analyzing usage and retrieval data from four data sets evaluating outputs,
 - (2) using outputs and datasets to create an outline for an Access (or other type of) database, and
 - (3) using the resultant data for providing recommendations to guide marketing efforts to end users.
3. The goal of the third project was to assist the Florida Division of Library and Information Services (Division) to assess the Gale-Cengage database portfolio within the Florida Electronic Library.

These activities increase the levels of and strengthen the quality and recognition of the commitment to community and business engagement. They also increase the community workforce.

- Promoting Economic Development and the Florida Workforce. The broadband telecommunications needs assessment projects with NFBA and FRBA had as a goal the promotion of economic development and jobs creation. In addition, the Information Institute recently submitted a \$1.1 million proposal to the National Science Foundation to collaborate with two Florida community colleges to assess the degree to which their information technology programs meet employer needs. This increases the community workforce.

- Producing High Quality and Broad-ranging Scholarship. The Information Institute has made significant contributions to the research base in specific areas such as digital services planning and evaluation, broadband telecommunications deployment for economic development, access to and use of E-government services, hurricane and disaster preparedness and response, and performance/outcomes assessment in a range of digital services and especially in the area of digital literacy. This track record of performance of publications in nationally recognized refereed journals, books, and other outlets is significant and is summarized later.
- Extending Collaborations and Student Research Participation. The Information Institute has collaborated with a number of other research organizations in the public and academic sectors. The Information Institute's funded research projects have supported many graduate students with remitted tuition, stipends, and scholarships. The various publications resulting from Information Institute funded projects indicate a significant degree of collaboration and co-authorship with other faculty and with these graduate students.

What is the Center or Institute best known for?

The Information Institute is best known for its work in planning and evaluation of digital services and products; in broadband telecommunications and deployment; and in planning and assessing of E-government services.

What is the greatest strength of the Center or Institute?

The greatest strengths of the Information Institute are the high quality staff and students who have worked here over the years, as well as the successful external funding that the Information Institute has received.

What are the most significant challenges facing the Center or Institute?

See response to this question as part of the last question in this document.

FUNDING (2007–2008 THROUGH 2011–2012)

What is the source and amount of expenditures from 2007-2008 to 2011-2012 for the Center/Institute using the following categories?

Expenditures	2007–2008	2010–2011	2011–2012
University (E&G)	\$75,181	\$100,500	\$111,146
State (General Revenue Other than E&G)	0	0	0
State (C&G)	\$34,228	\$73,176	\$28,175
Federal	\$92,937	0	\$56,170
Local	0	\$177,239	\$159,102
Private / nonprofit organization	\$410,324	\$28,070	\$39,356
Endowment proceeds	\$32,571	\$26,638	\$21,608
Proceeds from patents or royalties	0	0	0
Sales from services or products	0	0	0
Others (specify)	0	0	0
Total expenditures	\$645,241	\$405,623	\$415,557

ENDOWMENT INFORMATION

Is the Center/Institute supported in whole or in part by proceeds from an endowment?

Yes

What is the amount of the endowment?

\$40,000 per year

Where is the endowment managed?

FSU Research Foundation

Does the C/I spend only interest earnings?

N/A – there is no interest on the amount awarded for the endowment.

Does the C/I spend part of the capital of the endowment?

NA

CONTRACT AND GRANT INFORMATION

	2007–2008	2010–2011	2011–2012
Number of proposals submitted	2	7	3
Number of proposals funded	2	3	2
Proposals Made Jointly with Individuals not Directly associated with the Center / Institute	0	2	0
Total amount of awards	\$60,000	\$297,481	\$93,854

****NOTE:** Proposals submitted during a fiscal year are not necessarily funded in the same fiscal year or are awards and/or transfers from an existing award. Therefore, the number of proposals funded and total amount of awards includes data on all proposal funding received for this period of time.

Were any of the contracts or grants multi-year? Yes

How many years does the Center or Institute have left on any current contract or grant? None

Have any contracts or grants been renewed in the reporting period and, if so, how many? No

OTHER CENTER OR INSTITUTE ACTIVITIES

Has the Center/Institute generated any patents or royalties? No

Has the Center or Institute applied for a patent that has not yet been granted? If so, please describe. N/A

EMPLOYMENT
(2007–2008 THROUGH 2011–2012)

UNIVERSITY POSITIONS ASSOCIATED WITH THE C/I:

	2007–2008	2010–2011	2011–2012
Number of Faculty (FTE)	.92	.55	.59
Number of A&P and USPS positions (FTE)	1.00	1.00	1.00
Total Positions	1.92	1.55	1.59

STUDENT EMPLOYMENT (INCLUDE GRADUATE AND UNDERGRADUATE):

	2007–2008	2010–2011	2011–2012
Number of research assistants employed (FTE)	11 (6.19)	9 (5.00)	7 (4.00)
Number of teaching assistants employed (FTE)	N/A	0	0
Number of interns (with stipend or OPS)	N/A	0	0
Number of interns (without pay)	N/A	0	0
Total student positions	11	9	7

OTHER STUDENT FINANCIAL BENEFITS
(INCLUDING GRADUATE AND UNDERGRADUATE):

	2007–2008	2010–2011	2011–2012
	Number/Amount	Number/Amount	Number/Amount
Out of state tuition waivers	0/0	0/0	0/0
Student fellowships	0/0	0/0	1/\$5,000
Scholarships	0/0	0/0	0/0
Post-doctoral support	0/0	0/0	0/0
Amt of student travel support	6/\$3,044	1/\$2,760	4/\$8,208
Amt of registration for student conference attendance	3/\$150	1/\$395	3/\$921
Other support	12 (fees)/\$9,610	5 (fees)/\$4,615	1 (fees)/\$899

Comments or additional information

RESEARCH AND EXTENSION (2007–2008 THROUGH 2011–2012)

Note: web-delivered and CD-Rom publications are counted in these totals.

PUBLICATIONS IN REFEREED JOURNALS

Note: Do not include those credited to a faculty member's primary academic department that are unrelated to the C/I mission.

	2007–2008	2010–2011	2011–2012
Number of faculty publications	0	0	0
Number of student publications	0	1	3
Number of publications authored jointly with other faculty at FSU	1	0	0
Number of publications authored jointly with students in the C/I	1	4	1
Number of publications authored jointly with faculty at locations other than FSU	2	1	0

Please have a list of relevant publications available if requested.

OTHER PUBLICATIONS AND CONFERENCE PAPERS

	2007–2008	2010–2011	2011–2012
Number of extension or outreach publications	3	5	4
Number of national conference papers submitted	0	3	1
Number of national conference papers accepted	0	3	1
DATE, CONFERENCE AND NAME OF PRESENTATION(S)	N/A	*	*
Number of regional conference papers submitted	0	1	1
Number of regional conference papers accepted	0	1	1
DATE, CONFERENCE AND NAME OF PRESENTATION(S)	N/A	*	*

*Available upon request

ANNUAL REPORT

Does the Center or Institute produce an annual report? If so, please have copies available or provide the web link.

YES. The annual report can be found at: www.expertnet.org/bor/Login.cfm under password and login, and is available upon request.

STUDENT PUBLICATIONS

	2007–2008	2010–2011	2011–2012
Number of student theses credited to or associated with the C/I	0	0	0
Number of dissertations	0	1	1
Number of any other student papers	15	14	7

PROFESSIONAL DEVELOPMENT AND ASSISTANCE**Consulting**

	2007–2008	2010–2011	2011–2012
Number of consulting contracts	1	1	0
Name of consulting recipient(s)	*	**	N/A
Consulting Subject or Topic	*	**	N/A
Amount of funding provided through general funds of the C/I	0	0	0
Amount of funding obtained through contract in addition to general C/I funds	0	0	0

*Michelle Howard/FL Libraries & E-Government

**Ruth O'Donnell/IMLS Grant Review

Technical Assistance

	2007–2008	2010–2011	2011–2012
Number of technical assistance sessions or seminars offered	0	0	0
Name of technical assistance recipient(s)	0	0	0
Technical Assistance Subject or Topic	0	0	0
Amount of Funding	0	0	0

CONFERENCES OR SYMPOSIA

How many conferences or symposia has the Center or Institute sponsored or hosted during this reporting period? Please list.

Two

FY 2007/2008

- Meeting on open Government titled the *21st Century Right to Know Project Conference*. Held April 2008.

FY 2010/2011

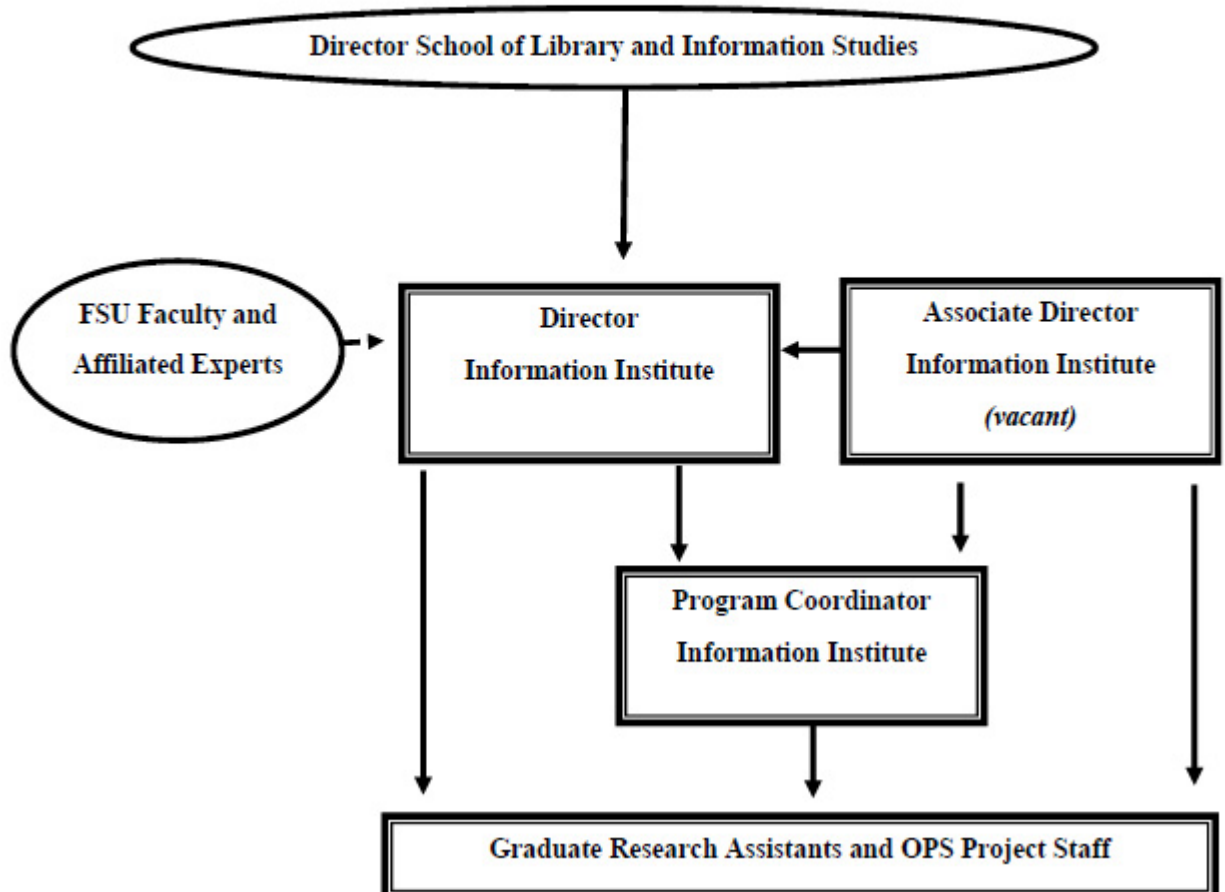
- Webinar titled *Public Library – Emergency Management Emergency partnerships at OCLC’s Webjunction*. Held August 2010.

Comments or additional information

MANAGEMENT

Center/Institute organizational chart

ORGANIZATION CHART



<i>Is the Center or Institute legislatively created?</i>	No
<i>Does the Center/Institute have an advisory board?</i>	No. The Information Institute does not have a formally appointed advisory board although the director regularly solicits advice and input from colleagues here at FSU, the Dean of the College and the Director of the school, other academic institutions, and the public and private sectors.
<i>How often are meetings held?</i>	N/A
<i>Does the board manage the C/I or does it serve in an advisory capacity?</i>	N/A
<i>Please describe and include a list of current members.</i>	N/A
<i>How long has the Center/Institute director served?</i>	13 years
<i>How does the Center/Institute directorship change?</i>	It does not change hands.
<i>Are there other issues associated with management transition?</i>	N/A
<i>If there are multiple sites, how are they administered? Who has the final oversight?</i>	N/A
<i>Comments or additional information</i>	

ADDITIONAL ISSUES*Issues facing the Center or Institute*

Despite the overall success of the Information Institute there are a number of issues we currently face regarding its future development and health.

- **Competition for External Funding.** The competition for all types of external funding has increased significantly at the same time that dollar amounts for available funding are being reduced. This is true at the state and federal level, and at foundations we have approached. Thus, careful consideration will be needed to determine which funding opportunities have, in fact, a good chance of being realized.
- **Reduced Resource Support within FSU and from the State of Florida.** During the last 3-4 years FSU – as with other higher education institutions in Florida – has seen its funding seriously eroded. It is unlikely that the Information Institute can adequately compensate for that loss of resources.
- **Soft Money Operation.** With some exceptions, the Information Institute operates largely on soft money. Thus the return on investment for FSU from the Information Institute has been significant – since FSU provides little direct support. This model for operation may not support the Information Institute in the future.
- **Inadequate Administrative Support.** Though the University Business Administrators (UBA) Program does assist with some administrative support activities related to the Institute, the Institute's Program Coordinator still spends about 50% of her time on administrative activities.

OVERALL EVALUATION

- ✓ The Information Use Management and Policy Institute is meeting its mission of developing and implementing applied research and policy studies that improve the quality, effectiveness, and productivity of individuals and organizations' use and management of information resources and services. The Institute is especially interested in the social and behavioral aspects regarding access to, the use of, and management of information and information technology. Its activities include: conducting externally funded research, conducting assessments of information infrastructures, improving the competitiveness of rural communities to attract and create technology jobs, and providing avenues for student research.
- ✓ The Institute receives \$415,557 of university E&G funding with a 1:2.7 return on this E&G investment.
- ✓ The Institute should continue its work. It provides valuable assistance in conformance with several Board of Governors mission statements: increasing externally funded research; strengthening quality and reputation of scholarship, research and innovation; increasing collaboration for research activity and strengthen reputation of scholarship; strengthen quality and reputation of academic programs and universities; and increasing levels of community and business engagement. Their activities have resulted in numerous publications and projects, community outreach, and numerous student Research Assistant positions and related opportunities to participate in research.
- ✓ No changes are necessary to its mission or organizational structure.
- ✓ The Institute is funded by university, state C&G, federal, state, local, private/nonprofit funds, and endowment proceeds. Although it faces pressure from the current fiscal climate, it has been aggressive in seeking sources of outside funding, and has increased total expenditures from the previous year. It is expected that funding will continue, both to support the Institute's activities and to provide additional administrative support.
- ✓ No change in classification is needed.
- ✓ Retain active status.

CENTER OF EXCELLENCE FOR PATIENT SAFETY

FSU College of Medicine
1115 West Call Street
Tallahassee, FL 32306-4300

Phone: (850) 644-2362
Director: Dennis Tsilimingras, M.D., M.P.H.
dennis.tsilimingras@med.fsu.edu
(850) 644-2362
Budget and funding contact: Joshua Jordan
Joshua.jordan@med.fsu.edu
(850) 644-3516
Web site: <http://med.fsu.edu/index.cfm?page=patientsafety.home>

If multidisciplinary, please list departments associated with C/I.

N/A

MISSION AND ACTIVITIES

What is the Center's or Institute's mission statement?

The Center of Excellence for Patient Safety was established to promote and conduct innovative research designed to reduce medical errors and adverse events in all venues of care.

Briefly, what activities are consistently performed that move the Center/Institute toward meeting its established mission? This section should also include activities related to meeting the State Board of Governor's mission. The State Board of Governors mission includes the following:

- 1. Strengthen Quality & Reputation of Academic Programs and Universities*
- 2. Increase Degree Productivity and Program Efficiency*
- 3. Increase the Number of Degrees Awarded in STEM and Other Areas of Strategic Emphasis*
- 4. Strengthen Quality and Reputation of Scholarship, Research and Innovation*
- 5. Increase Research and Commercialization Activity*
- 6. Increase Collaboration and External Support for Research Activity*
- 7. Strengthen Quality and Recognition of Commitment to Community and Business Engagement*
- 8. Increase Levels of Community and Business Engagement*
- 9. Increase Community and Business Workforce*

What is the Center or Institute best known for?

What is the greatest strength of the Center or Institute?

What are the most significant challenges facing the Center or Institute?

Activities:

- a. The Center expands scholarly research on patient safety. In this reporting period, the Center received a federal R01 grant from the Agency for Healthcare Research and Quality (AHRQ) to study adverse events after discharge from a community hospital (ClinicalTrials.gov Identifier: NCT01536340). This relates to the State Board of Governor's mission to strengthen quality and reputation of research, and increase external support for research activity.
- b. The Center disseminates scholarly research on patient safety to medical directors, physicians, policymakers, the media, and other organizations interested in improving patient safety and quality of care both locally and nationally. This relates to the State Board of Governor's mission to increase levels of community engagement, and strengthen quality of reputation of research.
- c. The Center provides continuing medical education for healthcare professionals on patient safety issues such as medical errors and adverse events. This relates to the State Board of Governor's mission to increase levels of community engagement.

The Center is best known for its expertise in patient safety at the FSU College of Medicine and the local community including the Tallahassee Memorial Hospital.

The greatest strength of the Center is its ability to disseminate scholarly research on adverse events resulting from medical errors at the time of discharge from the hospital.

The most significant challenges facing the Center are the development of interventions to reduce the risk of medical errors and adverse events in the hospital and ambulatory settings.

FUNDING (2007–2008 THROUGH 2011–2012)

What is the source and amount of expenditures from 2007-2008 to 2011-2012 for the Center/Institute using the following categories?

Expenditures	2007–2008	2010–2011	2011–2012
University (E&G)	\$40,000	\$170,186	0
State (General Revenue Other than E&G)	0	0	0
State (C&G)	0	\$24,963	0
Federal	\$425,000	0	\$162,417
Local	0	0	0
Private / nonprofit organization	0	0	0
Endowment proceeds	0	0	0
Proceeds from patents or royalties	0	0	0
Sales from services or products	0	0	0
Others (specify)	0	0	0
Total expenditures	\$465,000	\$195,149	\$162,417

ENDOWMENT INFORMATION

Is the Center/Institute supported in whole or in part by proceeds from an endowment? No

What is the amount of the endowment? NA

Where is the endowment managed? NA

Does the C/I spend only interest earnings? NA

Does the C/I spend part of the capital of the endowment? NA

CONTRACT AND GRANT INFORMATION

	2007–2008	2010–2011	2011–2012
Number of proposals submitted	3	2	1
Number of proposals funded	0	1	1
Proposals Made Jointly with Individuals not Directly associated with the Center / Institute	0	0	0
Total amount of awards	0	\$908,105	0

****NOTE:** Proposals submitted during a fiscal year are not necessarily funded in the same fiscal year or are awards and/or transfers from an existing award. Therefore, the number of proposals funded and total amount of awards includes data on all proposal funding received for this period of time.

Were any of the contracts or grants multi-year?

Yes

How many years does the Center or Institute have left on any current contract or grant?

1

Have any contracts or grants been renewed in the reporting period and, if so, how many?

The grant awarded was proposed in 2010-2011, awarded in September 2011, and renewed into 2012-2013.

OTHER CENTER OR INSTITUTE ACTIVITIES

Has the Center/Institute generated any patents or royalties?

No

Has the Center or Institute applied for a patent that has not yet been granted? If so, please describe.

N/A

EMPLOYMENT
(2007–2008 THROUGH 2011–2012)

UNIVERSITY POSITIONS ASSOCIATED WITH THE C/I:

	2007–2008	2010–2011	2011–2012
Number of Faculty (FTE)	3.00	1.00	0.37
Number of A&P and USPS positions (FTE)	0.10	0	0
Total Positions	3.10	1.00	0.37

STUDENT EMPLOYMENT (INCLUDE GRADUATE AND UNDERGRADUATE):

	2007–2008	2010–2011	2011–2012
Number of research assistants employed (FTE)	0	0	0
Number of teaching assistants employed (FTE)	0	0	0
Number of interns (with stipend or OPS)	0	0	0
Number of interns (without pay)	0	0	0
Total student positions	0	0	0

OTHER STUDENT FINANCIAL BENEFITS
(INCLUDING GRADUATE AND UNDERGRADUATE):

	2007–2008	2010–2011	2011–2012
	Number/Amount	Number/Amount	Number/Amount
Out of state tuition waivers	0/0	0/0	0/0
Student fellowships	0/0	0/0	0/0
Scholarships	0/0	0/0	0/0
Post-doctoral support	0/0	0/0	/\$30,098
Amt of student travel support	0/0	0/0	0/0
Amt of registration for student conference attendance	0/0	0/0	0/0
Other support	0/0	0/0	0/0

Comments or additional information

RESEARCH AND EXTENSION (2007–2008 THROUGH 2011–2012)

Note: web-delivered and CD-Rom publications are counted in these totals.

PUBLICATIONS IN REFEREED JOURNALS

Note: Do not include those credited to a faculty member's primary academic department that are unrelated to the C/I mission.

	2007–2008	2010–2011	2011–2012
Number of faculty publications	7	1	1
Number of student publications	0	0	0
Number of publications authored jointly with other faculty at FSU	2	1	1
Number of publications authored jointly with students in the C/I	0	0	0
Number of publications authored jointly with faculty at locations other than FSU	2	1	1

Please have a list of relevant publications available if requested.

OTHER PUBLICATIONS AND CONFERENCE PAPERS

	2007–2008	2010–2011	2011–2012
Number of extension or outreach publications	0	1	3
Number of national conference papers submitted	0	0	3
Number of national conference papers accepted	4	0	3
<i>DATE, CONFERENCE AND NAME OF PRESENTATION(S)</i>	*	N/A	**
Number of regional conference papers submitted	0	0	0
Number of regional conference papers accepted	0	0	0
<i>DATE, CONFERENCE AND NAME OF PRESENTATION(S)</i>	N/A	N/A	N/A

*2008 May, Pediatric Academic Societies' Annual Meeting, The Use of Health Information Technologies by Children's Hospitals in the U.S.

2008 August (submitted in FY 07-08), Americas Conference on Information Systems (AMCIS) annual meeting, Measuring Returns on IT Investments in Healthcare

2008 June, AcademyHealth Annual Research Meeting, Ambulatory Surgery Centers' Structure and Process Characteristics Associated with Quality Outcomes after Outpatient Procedures

2008 August (submitted and accepted in FY 07-08), Academy of Management Annual Meeting, The Effects of Health Information Technology Adoption on Nurse Vacancy Rates in US Nursing Homes

**2012 September (submitted and accepted in FY 11-12), Agency for Healthcare Research and Quality (AHRQ) Annual Conference. Identifying Adverse Events After Discharge from a Community Hospital.

2012 October (submitted and accepted in FY 11-12), American Public Health Association (APHA), Vitamin D deficiency, insufficiency and pulse pressure.

2012 October (submitted and accepted in FY 11-12), American Public Health Association (APHA) Annual Meeting, Identifying Adverse Events After Discharge from a Community Hospital.

ANNUAL REPORT

Does the Center or Institute produce an annual report? If so, please have copies available or provide the web link.

No

STUDENT PUBLICATIONS

	2007–2008	2010–2011	2011–2012
Number of student theses credited to or associated with the C/I	0	0	0
Number of dissertations	0	0	0
Number of any other student papers	0	0	0

PROFESSIONAL DEVELOPMENT AND ASSISTANCE

Consulting

	2007–2008	2010–2011	2011–2012
Number of consulting contracts	0	0	0
Name of consulting recipient(s)	0	0	0
Consulting Subject or Topic	0	0	0
Amount of funding provided through general funds of the C/I	0	0	0
Amount of funding obtained through contract in addition to general C/I funds	0	0	0

Technical Assistance

	2007–2008	2010–2011	2011–2012
Number of technical assistance sessions or seminars offered	0	0	0
Name of technical assistance recipient(s)	0	0	0
Technical Assistance Subject or Topic	0	0	0
Amount of Funding	0	0	0

CONFERENCES OR SYMPOSIA

How many conferences or symposia has the Center or Institute sponsored or hosted during this reporting period? Please list.

None

Comments or additional information

MANAGEMENT

<i>Center/Institute organizational chart</i>	Dr. Dennis Tsilimingras serves as Director.
<i>Is the Center or Institute legislatively created?</i>	No
<i>Does the Center/Institute have an advisory board?</i>	No
<i>How often are meetings held?</i>	N/A
<i>Does the board manage the C/I or does it serve in an advisory capacity?</i>	N/A
<i>Please describe and include a list of current members.</i>	N/A
<i>How long has the Center/Institute director served?</i>	Dr. Dennis Tsilimingras became director 2009.
<i>How does the Center/Institute directorship change?</i>	The directorship is exchanged through an internal process at the College of Medicine. It would usually be granted to a faculty member specialized in patient safety.
<i>Are there other issues associated with management transition?</i>	No
<i>If there are multiple sites, how are they administered? Who has the final oversight?</i>	N/A
<i>Comments or additional information</i>	

ADDITIONAL ISSUES

<i>Issues facing the Center or Institute</i>	None
--	------

OVERALL EVALUATION

- ✓ The Center of Excellence for Patient Safety is meeting its mission of promoting and conducting innovative research designed to reduce medical errors and adverse events in all venues of care. Its activities include: expanding scholarly research on patient safety; disseminating scholarly research to key players interested in improving patient safety and quality of care, both locally and nationally; and providing continuing medical education for healthcare professionals on patient safety issues.
- ✓ This last year, the Center received no E&G funding so there is no return on an E&G investment. The Center typically brings in over \$100,000 per year without state support.
- ✓ The Center should continue its work, which is designed to improve health and safety of the population. It provides valuable assistance in conformance with several Board of Governors mission statements: strengthening quality and reputation of scholarship, research and innovation; increasing collaboration and levels of community engagement and increasing external support for research activity. It also provides post-doctoral financial support.
- ✓ No changes are necessary to its mission or organizational structure.
- ✓ The Center is funded by federal funds. Its primary federal grant has been renewed and there is an additional year left on the grant. Grant funding will continue to be sought.
- ✓ No change in classification is needed.
- ✓ Retain active status.

CENTER FOR MEDICINE AND PUBLIC HEALTH

FSU College of Medicine
1115 West Call Street
Tallahassee, FL 32306-4300

Phone: (850) 645-1830
Director: Leslie M. Beitsch, MD, JD
les.beitsch@med.fsu.edu
(850) 645-1830
Budget and funding contact: Joshua Jordan
Joshua.jordan@med.fsu.edu
(850) 644-3516
Web site: <http://med.fsu.edu/index.cfm?page=medicinePublichealth.home>

If multidisciplinary, please list departments associated with C/I.

N/A

MISSION AND ACTIVITIES

What is the Center's or Institute's mission statement?

The Center for Medicine and Public Health is dedicated to the study and enhancement of collaboration between the private medical sector and the public health sector at all levels of practice (federal, state, and local), via research, policy change, and service that fosters prevention and improved community health.

Briefly, what activities are consistently performed that move the Center/Institute toward meeting its established mission? This section should also include activities related to meeting the State Board of Governor's mission. The State Board of Governors mission includes the following:

1. *Strengthen Quality & Reputation of Academic Programs and Universities*
2. *Increase Degree Productivity and Program Efficiency*
3. *Increase the Number of Degrees Awarded in STEM and Other Areas of Strategic Emphasis*
4. *Strengthen Quality and Reputation of Scholarship, Research and Innovation*
5. *Increase Research and Commercialization Activity*
6. *Increase Collaboration and External Support for Research Activity*
7. *Strengthen Quality and Recognition of Commitment to Community and Business Engagement*
8. *Increase Levels of Community and Business Engagement*
9. *Increase Community and Business Workforce*

The following activities support the following BOG mission in the following areas: strengthen the quality & reputation of academic programs and universities; strengthen quality and reputation of scholarship, research and innovation; increase research and commercialization activity; and strengthen quality and recognition of commitment to community and business engagement.

Activities:

- a. The Center collaborates with a wide range of partners in Florida, and across the U.S., with organizations such as the Centers for Disease Control and Prevention (CDC), the Association of State and Territorial Health Officials, the National Association of County and City Health Officials, the National Network of Public Health Institutes, the Public Health Foundation, the Florida Medical Association (FMA), Capital Medical Society, and state and local health departments. This relates to the State Board of Governor's mission to increase collaboration for research activity and strengthen reputation of scholarship.
- b. The Center serves on committees, councils and boards to provide expertise to the community, state, and nation. For example, the Center served on the National Academies of Science Institute of Medicine committee examining the future of public health practice in a reformed health care system. The Center participated in the FMA Council on Public Health to promote a shared understanding of the common goals of medicine and public health within Florida. This relates to the State Board of Governor's mission to strengthen reputation of scholarship.
- c. The Center advances the practice of quality improvement in public health through research and service. Recently, the Center analyzed organizational networks of local health departments in Florida with the intent of studying the networks for siloed structures, and relayed the results to the department managers with the intent of improving their performance. These activities relate to the State Board of Governor's mission to strengthen reputation of scholarship, and to increase levels of community engagement.

What is the Center or Institute best known for?

The Center collaborates with the medical and public health communities on research, practice, and technical assistance. Much of our work in recent years has related to quality improvement methods for improving efficiency and effectiveness of service delivery.

What is the greatest strength of the Center or Institute?

The Center maintains strong relationships with medical and public health practice based organizations. In addition, there are cordial relationships with public and private funders, as well as local, state, and federal governments.

What are the most significant challenges facing the Center or Institute?

The past few years have been associated with significant resource limitations, which will only be magnified by the current sequester environment. Competitive proposals now face a more formidable bar to achieve funding than ever before. Despite strong relationships that have been developed and fostered over many years, the partnerships presently in place are with organizations confronting similar fiscal climates.

FUNDING (2007–2008 THROUGH 2011–2012)

What is the source and amount of expenditures from 2007-2008 to 2011-2012 for the Center/Institute using the following categories?

Expenditures	2007–2008	2010–2011	2011–2012
University (E&G)	0	0	0
State (General Revenue Other than E&G)	0	0	0
State (C&G)	0	0	\$65,771
Federal	0	0	0
Local	0	0	0
Private / nonprofit organization	\$85,000	\$78,270	\$46,611
Endowment proceeds	0	0	0
Proceeds from patents or royalties	0	0	0
Sales from services or products	0	0	0
Others (specify)	0	0	0
Total expenditures	\$85,000	\$78,270	\$112,382

ENDOWMENT INFORMATION

<i>Is the Center/Institute supported in whole or in part by proceeds from an endowment?</i>	No
<i>What is the amount of the endowment?</i>	NA
<i>Where is the endowment managed?</i>	NA
<i>Does the C/I spend only interest earnings?</i>	NA
<i>Does the C/I spend part of the capital of the endowment?</i>	NA

CONTRACT AND GRANT INFORMATION

	2007–2008	2010–2011	2011–2012
Number of proposals submitted	3	8	5
Number of proposals funded	2	5	3
Proposals Made Jointly with Individuals not Directly associated with the Center / Institute	1	5	2
Total amount of awards	\$132,148	\$177,719	\$185,000

****NOTE:** Proposals submitted during a fiscal year are not necessarily funded in the same fiscal year or are awards and/or transfers from an existing award. Therefore, the number of proposals funded and total amount of awards includes data on all proposal funding received for this period of time.

<i>Were any of the contracts or grants multi-year?</i>	Yes. Contract with the National Network of Public Health Institutes (NNPHI).
<i>How many years does the Center or Institute have left on any current contract or grant?</i>	1
<i>Have any contracts or grants been renewed in the reporting period and, if so, how many?</i>	1

OTHER CENTER OR INSTITUTE ACTIVITIES

Has the Center/Institute generated any patents or royalties? No

Has the Center or Institute applied for a patent that has not yet been granted? If so, please describe. N/A

EMPLOYMENT (2007–2008 THROUGH 2011–2012)

UNIVERSITY POSITIONS ASSOCIATED WITH THE C/I:

	2007–2008	2010–2011	2011–2012
Number of Faculty (FTE)	0.5	0.3	0.31
Number of A&P and USPS positions (FTE)	0	0	0.27
Total Positions	0.5	0.3	0.58

STUDENT EMPLOYMENT (INCLUDE GRADUATE AND UNDERGRADUATE):

	2007–2008	2010–2011	2011–2012
Number of research assistants employed (FTE)	0	0	0
Number of teaching assistants employed (FTE)	0	0	0
Number of interns (with stipend or OPS)	0	0	0
Number of interns (without pay)	0	0	0
Total student positions	0	0	0

OTHER STUDENT FINANCIAL BENEFITS (INCLUDING GRADUATE AND UNDERGRADUATE):

	2007–2008 Number/Amount	2010–2011 Number/Amount	2011–2012 Number/Amount
Out of state tuition waivers	0/0	0/0	0/0
Student fellowships	0/0	0/0	0/0
Scholarships	0/0	0/0	0/0
Post-doctoral support	0/0	0/0	0/0
Amt of student travel support	0/0	0/0	0/0
Amt of registration for student conference attendance	0/0	0/0	0/0
Other support	0/0	0/0	0/0

Comments or additional information

RESEARCH AND EXTENSION (2007–2008 THROUGH 2011–2012)

Note: web-delivered and CD-Rom publications are counted in these totals.

PUBLICATIONS IN REFEREED JOURNALS

Note: Do not include those credited to a faculty member's primary academic department that are unrelated to the C/I mission.

	2007–2008	2010–2011	2011–2012
Number of faculty publications	4	4	4
Number of student publications	0	0	0
Number of publications authored jointly with other faculty at FSU	0	0	1
Number of publications authored jointly with students in the C/I	0	0	0
Number of publications authored jointly with faculty at locations other than FSU	4	4	3

Please have a list of relevant publications available if requested.

OTHER PUBLICATIONS AND CONFERENCE PAPERS

	2007–2008	2010–2011	2011–2012
Number of extension or outreach publications	0	0	0
Number of national conference papers submitted	3	11	8
Number of national conference papers accepted	3	11	8
<i>DATE, CONFERENCE AND NAME OF PRESENTATION(S)</i>	*	*	*
Number of regional conference papers submitted	5	4	0
Number of regional conference papers accepted	5	4	0
<i>DATE, CONFERENCE AND NAME OF PRESENTATION(S)</i>	*	*	N/A

*Available upon request

ANNUAL REPORT

Does the Center or Institute produce an annual report? If so, please have copies available or provide the web link.

No

STUDENT PUBLICATIONS

	2007–2008	2010–2011	2011–2012
Number of student theses credited to or associated with the C/I	0	0	0
Number of dissertations	0	0	0
Number of any other student papers	0	0	0

PROFESSIONAL DEVELOPMENT AND ASSISTANCE

Consulting

	2007–2008	2010–2011	2011–2012
Number of consulting contracts	0	0	0
Name of consulting recipient(s)	N/A	N/A	N/A
Consulting Subject or Topic	N/A	N/A	N/A
Amount of funding provided through general funds of the C/I	0	0	0
Amount of funding obtained through contract in addition to general C/I funds	0	0	0

Technical Assistance

	2007–2008	2010–2011	2011–2012
Number of technical assistance sessions or seminars offered	0	0	0
Name of technical assistance recipient(s)	N/A	N/A	N/A
Technical Assistance Subject or Topic	N/A	N/A	N/A
Amount of Funding	0	0	0

CONFERENCES OR SYMPOSIA

How many conferences or symposia has the Center or Institute sponsored or hosted during this reporting period? Please list.

None

Comments or additional information

MANAGEMENT

Center/Institute organizational chart

Leslie Beitsch serves as Director.

Is the Center or Institute legislatively created?

No

Does the Center/Institute have an advisory board?

No

How often are meetings held?

N/A

Does the board manage the C/I or does it serve in an advisory capacity?

N/A

Please describe and include a list of current members.

N/A

How long has the Center/Institute director served?

The director has served since November 2003.

How does the Center/Institute directorship change?

The directorship is exchanged through an internal process at the College of Medicine. It would usually be granted to a faculty member specialized in public health.

Are there other issues associated with management transition?

No

If there are multiple sites, how are they administered? Who has the final oversight?

N/A

Comments or additional information

ADDITIONAL ISSUES*Issues facing the Center or Institute*

None

OVERALL EVALUATION

- ✓ The Center for Medicine and Public Health is meeting its mission of advancing prevention and improved community health through research, policy change, and the enhancement of collaboration between private medical sector and public health sector at all levels. Its activities include: serving on committees to provide expertise; outreach across a wide range of state and national health organizations; research; and performance analysis of local health departments.
- ✓ The Center receives no E&G funding so there is no return on an E&G investment.
- ✓ The Center should continue its work. It provides valuable assistance in conformance with several Board of Governors mission statements: strengthening quality and reputation of scholarship, research and innovation; increasing collaboration for research activity and strengthen reputation of scholarship; and increasing levels of Community and Business Engagement.
- ✓ No changes are necessary to its mission or organizational structure.
- ✓ The Center is funded by state and private funds. Although it faces pressure from the current fiscal climate, it maintains strong ties with medical and public health organizations and therefore is expected to continue to receive funding from these and other sources. It has increased funding in this last year.
- ✓ No change in classification is needed.
- ✓ Retain active status.

CENTER FOR STRATEGIC PUBLIC HEALTH PREPAREDNESS

FSU College of Medicine
1115 West Call Street
Tallahassee, FL 32306-4300

Phone: (850) 645-1830
Director: Michael P. Smith, MA, MPA
mpsmith@med.fsu.edu
(850) 645-7151
Budget and funding contact: Joshua Jordan
Joshua.Jordan@med.fsu.edu
(850) 644-3516
Web site: <http://med.fsu.edu/index.cfm?page=strategicPublicHealthPreparedness.home>

If multidisciplinary, please list departments associated with CI.

N/A

NOTE: The Dean of the College of Medicine has requested termination of this Center effective September 2013.

MISSION AND ACTIVITIES

What is the Center's or Institute's mission statement?

The mission of the Center for Strategic Public Health Preparedness is to serve as a resource for the education of public health care workers and the public in the area of public health preparedness.

Briefly, what activities are consistently performed that move the Center/Institute toward meeting its established mission? This section should also include activities related to meeting the State Board of Governor's mission. The State Board of Governors mission includes the following:

1. *Strengthen Quality & Reputation of Academic Programs and Universities*
2. *Increase Degree Productivity and Program Efficiency*
3. *Increase the Number of Degrees Awarded in STEM and Other Areas of Strategic Emphasis*
4. *Strengthen Quality and Reputation of Scholarship, Research and Innovation*
5. *Increase Research and Commercialization Activity*
6. *Increase Collaboration and External Support for Research Activity*
7. *Strengthen Quality and Recognition of Commitment to Community and Business Engagement*
8. *Increase Levels of Community and Business Engagement*
9. *Increase Community and Business Workforce*

The following activities support the following BOG mission in the following areas: strengthen the quality & reputation of academic programs and universities; strengthen quality and reputation of scholarship, research and innovation; increase research and commercialization activity; and strengthen quality and recognition of commitment to community and business engagement.

Activities:

- a. The Center engages in applied research including surveillance, epidemic analysis, information and communications systems development, intervention strategies, manpower utilization, and business process application. This relates to the State Board of Governor's mission to strengthen reputation of scholarship.
- b. The Center assesses and evaluates public health preparedness including after action facilitation, process and outcome evaluation, assessment according to established plans, assessment and evaluation plan development, on-site evaluation reviews, and budget performance analysis. This relates to the State Board of Governor's mission to strengthen reputation of scholarship.
- c. The Center trains and educates organizations on public health preparedness. Activities include course design and production, multi-media presentations, hands-on and site-specific training, drills and exercises (from table top to full scale), HSEEP standards, public health for incident command, and CDC and DHS standards training. This relates to the State Board of Governor's mission to strengthen reputation of scholarship.
- d. The Center provides technical assistance including public health response assistance, program development facilitation, information systems development, program management support, grant writing and reporting, and business support. This relates to the State Board of Governor's mission to strengthen reputation of scholarship and to increase collaboration.
- e. The Center engages in policy development including statute and rule analysis and development; operating protocols; PHEP plan development; state-specific command and control; federal, state and local integration; standards of care; and emergency public health authorities. This relates to the State Board of Governor's mission to strengthen reputation of scholarship and to increase community engagement.

What is the Center or Institute best known for?

Serving as a resource for state agencies, the legislature, and Florida business community on all aspects of public health preparedness

What is the greatest strength of the Center or Institute?

Ability to organize a team of public health experts to address needs of Florida and its citizens on very short notice

What are the most significant challenges facing the Center or Institute?

The most significant challenge facing the Center is to attract funding and/or sponsorship.

FUNDING (2007–2008 THROUGH 2011–2012)

What is the source and amount of expenditures from 2007-2008 to 2011-2012 for the Center/Institute using the following categories?

Expenditures	2007–2008	2010–2011	2011–2012
University (E&G)	0	0	0
State (General Revenue Other than E&G)	0	0	0
State (C&G)	\$49,500	0	0
Federal	0	0	0
Local	0	0	0
Private / nonprofit organization	0	0	0
Endowment proceeds	0	0	0
Proceeds from patents or royalties	0	0	0
Sales from services or products	0	0	0
Others (specify)	0	0	0
Total expenditures	\$49,500	0	0

ENDOWMENT INFORMATION

Is the Center/Institute supported in whole or in part by proceeds from an endowment? No

What is the amount of the endowment? NA

Where is the endowment managed? NA

Does the C/I spend only interest earnings? NA

Does the C/I spend part of the capital of the endowment? NA

CONTRACT AND GRANT INFORMATION

	2007–2008	2010–2011	2011–2012
Number of proposals submitted	1	1	0
Number of proposals funded	1	0	0
Proposals Made Jointly with Individuals not Directly associated with the Center / Institute	0	0	0
Total amount of awards	\$198,440	0	0

****NOTE:** Proposals submitted during a fiscal year are not necessarily funded in the same fiscal year or are awards and/or transfers from an existing award. Therefore, the number of proposals funded and total amount of awards includes data on all proposal funding received for this period of time.

Were any of the contracts or grants multi-year? No

How many years does the Center or Institute have left on any current contract or grant? N/A

Have any contracts or grants been renewed in the reporting period and, if so, how many? N/A

OTHER CENTER OR INSTITUTE ACTIVITIES

Has the Center/Institute generated any patents or royalties? No

Has the Center or Institute applied for a patent that has not yet been granted? If so, please describe. N/A

EMPLOYMENT (2007–2008 THROUGH 2011–2012)

UNIVERSITY POSITIONS ASSOCIATED WITH THE C/I:

	2007–2008	2010–2011	2011–2012
Number of Faculty (FTE)	0.4	0	0
Number of A&P and USPS positions (FTE)	0	0	0
Total Positions	0.4	0	0

STUDENT EMPLOYMENT (INCLUDE GRADUATE AND UNDERGRADUATE):

	2007–2008	2010–2011	2011–2012
Number of research assistants employed (FTE)	0	0	0
Number of teaching assistants employed (FTE)	0	0	0
Number of interns (with stipend or OPS)	0	0	0
Number of interns (without pay)	0	0	0
Total student positions	0	0	0

**OTHER STUDENT FINANCIAL BENEFITS
(INCLUDING GRADUATE AND UNDERGRADUATE):**

	2007–2008	2010–2011	2011–2012
	Number/Amount	Number/Amount	Number/Amount
Out of state tuition waivers	N/A/N/A	0/0	0/0
Student fellowships	N/A/N/A	0/0	0/0
Scholarships	N/A/N/A	0/0	0/0
Post-doctoral support	N/A/N/A	0/0	0/0
Amt of student travel support	N/A/N/A	0/0	0/0
Amt of registration for student conference attendance	N/A/N/A	0/0	0/0
Other support	N/A/N/A	0/0	0/0

Comments or additional information

Student was awarded FSU grant to study reemergence of Dengue Fever in Florida during summer of 2012.

**RESEARCH AND EXTENSION
(2007–2008 THROUGH 2011–2012)**

Note: web-delivered and CD-Rom publications are counted in these totals.

PUBLICATIONS IN REFEREED JOURNALS

Note: Do not include those credited to a faculty member's primary academic department that are unrelated to the C/I mission.

	2007–2008	2010–2011	2011–2012
Number of faculty publications	1	0	0
Number of student publications	0	0	0
Number of publications authored jointly with other faculty at FSU	0	0	0
Number of publications authored jointly with students in the C/I	0	0	0
Number of publications authored jointly with faculty at locations other than FSU	0	0	0

Please have a list of relevant publications available if requested.

OTHER PUBLICATIONS AND CONFERENCE PAPERS

	2007–2008	2010–2011	2011–2012
Number of extension or outreach publications	0	0	0
Number of national conference papers submitted	0	0	0
Number of national conference papers accepted	0	0	0
DATE, CONFERENCE AND NAME OF PRESENTATION(S)	N/A	N/A	N/A
Number of regional conference papers submitted	1	0	0
Number of regional conference papers accepted	1	0	0
DATE, CONFERENCE AND NAME OF PRESENTATION(S)	*	0	0

*December 11, 2008; satellite teleconference and live webinar co-sponsored by the Alabama Department of Public Health and the South Central Center for Public Health Preparedness; Strengthening Public Health Capacity to Serve the Community: Applying Accreditation and QI Tools

ANNUAL REPORT

Does the Center or Institute produce an annual report? If so, please have copies available or provide the web link. No

STUDENT PUBLICATIONS

	2007–2008	2010–2011	2011–2012
Number of student theses credited to or associated with the C/I	0	0	0
Number of dissertations	0	0	0
Number of any other student papers	0	0	1

PROFESSIONAL DEVELOPMENT AND ASSISTANCE

Consulting

	2007–2008	2010–2011	2011–2012
Number of consulting contracts	0	0	0
Name of consulting recipient(s)	0	0	0
Consulting Subject or Topic	0	0	0
Amount of funding provided through general funds of the C/I	0	0	0
Amount of funding obtained through contract in addition to general C/I funds	0	0	0

Technical Assistance

	2007–2008	2010–2011	2011–2012
Number of technical assistance sessions or seminars offered	0	0	0
Name of technical assistance recipient(s)	0	0	0
Technical Assistance Subject or Topic	0	0	0
Amount of Funding	0	0	0

CONFERENCES OR SYMPOSIA

How many conferences or symposia has the Center or Institute sponsored or hosted during this reporting period? Please list.

Comments or additional information

MANAGEMENT

Center/Institute organizational chart

Michael P. Smith serves as Director.

Is the Center or Institute legislatively created?

No

Does the Center/Institute have an advisory board?

No

How often are meetings held?

N/A

Does the board manage the C/I or does it serve in an advisory capacity?

N/A

Please describe and include a list of current members.

N/A

How long has the Center/Institute director served?

Michael P. Smith became director in 2010.

How does the Center/Institute directorship change?

The directorship is exchanged through an internal process at the College of Medicine. It would usually be granted to a faculty member specialized in emergency management and public health.

Are there other issues associated with management transition?

No

If there are multiple sites, how are they administered? Who has the final oversight?

N/A

Comments or additional information

ADDITIONAL ISSUES

Issues facing the Center or Institute

Funding

OVERALL EVALUATION

- ✓ With the exception of a small student grant, no activity has occurred within the Center for the last two years. The Dean of the College of Medicine has requested termination of this Center effective September 2013.