

FLORIDA STATE UNIVERSITY

Centers and Institutes Review 2011

SEPTEMBER 2012

EXECUTIVE SUMMARY

The purpose of this review is to assess the activities of 15 Centers and Institutes at FSU. Some are within the Colleges of Arts and Sciences and Engineering. One is within the College of Human Sciences. The Institute of Science and Public Affairs is not housed within a college and contains several of the entities reviewed during this cycle. This is consistent with the Florida Board of Governors (BOG) requirement that each Center and Institute is evaluated in depth every 7 years.

This review contains the following Centers and Institutes:

- Middle East Center
- Institute on World War II and the Human Experience
- Center for Intelligent Systems, Control and Robotics
- High Performance Materials Institute
- Florida Center for Advanced Aero-Propulsion
- Energy and Sustainability Center
- Center on Better Health and Life for Underserved Populations
- Institute of Science and Public Affairs
- Center for Economic Forecasting and Analysis
- Center for Higher Education Research, Teaching and Innovation
- Center for Prevention and Early Intervention Policy
- Florida Conflict Resolution Consortium (FCRC) and FCRC Consensus Center
- Florida Resources and Environmental Analysis Center
- Beaches and Shores Resource Center
- Center for the Advancement of Human Rights

The Centers and Institutes in this year's report offer opportunities for student support, community involvement and research collaboration. One of them uses a wide interdisciplinary approach to focus attention on the Middle East through community education programs and academic study. Four of them provide technical assistance and consultation on topics such as health and underserved populations, child development, human rights and the economics of public policy issues. One of the Centers focuses on research on topics of importance to higher education. One of them assembles and provides artifacts from World War II to researchers, students and the public. Another, legislatively created, focuses on conflict resolution and consensus. One of the institutes provides

administrative support and coordination for several of the other Centers and Institutes reviewed here.

Several of the Centers focus their efforts primarily on research. Two of the Centers and Institutes are performing research on composite materials or aerospace technologies that has resulted in the awarding of patents. Another is doing research on robotics which has yielded practical results leading to a patent application. Others focus on environmental issues such as the reduction of CO₂ emissions, preservation of coastline resources and prevention of coastal property damage and the availability of a large geographic digital library with information available to public and private entities, along with web design and desktop publishing expertise.

A detailed survey was conducted in February 2012 eliciting the following information:

- Contact information
- Mission statement
- Activities in support of the mission
- Strengths and challenges
- Funding
- Benefits to students
- Opportunities for faculty
- Information and assistance to the community

The Centers and Institutes in this year's report have varied funding schemes. Nine of this year's Centers and Institutes receive no E&G funding. The other six average from 60 cents to \$35.20 in additional funding for each dollar of E&G funding. None of them are funded exclusively with E&G. Three of them receive funding from sales of products or services; four of them have funds managed through the FSU Foundation; four are funded primarily through federal sources, and one is exclusively funded with federal dollars. Two are funded primarily with state funds. Most of them have funding from a mix of state, federal and private/nonprofit sources. All the centers and institutes are productive and actively engaged in promoting scholarship and the prosperity of the state.

DESCRIPTION OF CENTER OR INSTITUTE

MIDDLE EAST CENTER

Director: Peter P. Garretson

The Middle East Center (MEC) at Florida State University (FSU) is an interdisciplinary center dedicated to the scholarly study of the Middle East. Its mission is to bridge a variety of disciplines on campus in order to provide a rich academic environment for

students who are seeking a greater understanding of the Middle East. The Center administers an interdisciplinary Bachelor of Arts in Middle Eastern Studies, as well as three minors in Arabic, Middle Eastern Studies, and Hebrew. The Center has a very active outreach program fostering an interest in the Modern Middle East at the K-12 and Community College levels. It provides an ongoing resource for those in Florida interested in activities within the Middle East. Furthermore, its yearly film festival and lecture series provide educational opportunities for students and community members who are interested in the Middle East.

INSTITUTE ON WORLD WAR II AND THE HUMAN EXPERIENCE

Director: G. Kurt Piehler

The focus of the Institute on World War II and the Human Experience is collecting, preserving and facilitating the study of the memories of the men and women who participated in all the military branches, service with the Merchant Marine, Red Cross, USO, workers and volunteers on the Home Front (e.g., ship-building yards, defense plants, YMCA and other clubs) during the WWII era and the immediate post-war period (i.e., 1939 - 1949). The purpose of collecting and preserving this memorabilia is to make it available to college students and scholars from Florida State University as well as other universities, documentaries (The History Channel), scholar researchers, genealogy research, History Fair projects, public school classrooms, displays and for other research (e.g., Army Medical Department Regiment).

CENTER FOR INTELLIGENT SYSTEMS, CONTROL AND ROBOTICS (CISCOR)

Director: Emmanuel G. Collins

The vision of the Center for Intelligent Systems, Control, and Robotics (CISCOR) is to use state-of-the-art technology to develop practical solutions to problems in systems, control and robotics for applications in industry and government. The Center provides a focus for engineering activities centered on robotics by faculty and students at FSU and FAMU. It works to foster innovation and commercialization of sophisticated robotics devices.

HIGH-PERFORMANCE MATERIALS INSTITUTE (HPMI)

Director: W. Frank Allen

The mission of the Institute is to conduct and promote a broad range of multidisciplinary research and integration to improve the performance and affordability of advanced composite materials and structures. It seeks to expand the pool of well-educated and

multidisciplinary-trained engineers and scientists for a technology sector of national and global significance and works with technology transfer and economic development professionals in commercializing composite technology and increasing economic impact. It works with the Economic Development Council, Enterprise Florida and Florida Great Northwest to encourage industry to move and develop in Florida. It also identifies areas for expansion of research, most recently using composites for making prosthetics lighter and more comfortable.

FLORIDA CENTER FOR ADVANCED AERO-PROPULSION (FCAAP)

Director: Farrukh Alvi

FCAAP aims to be a technical educational focal point as well as a resource & ‘solutions’ center for Florida and the nation in aerospace, aviation and related areas. This is accomplished by, among other things, pursuing opportunities in research and education and developing educational and outreach programs; creating stronger ties with Industry and other aerospace stakeholders by marketing the Center’s collective resources; and strategically investing in infrastructure and personnel to ‘fill in the gaps’ and enhance FCAAP’s intellectual and physical capital available for efforts related to aerospace-related engineering and sciences. It has had significant success in state and national collaboration efforts as evidenced by joint research with the Federal Aviation Administration, the National Science Foundation, the Universities of Florida and Central Florida and Embry-Riddle Aeronautical University.

ENERGY & SUSTAINABILITY CENTER (FORMERLY SUSTAINABLE ENERGY SCIENCE AND ENGINEERING CENTER OR SESEC)

Director: Anjaneyulu Krothapalli

The Energy and Sustainability Center (formerly Sustainable Energy Science and Engineering Center) addresses challenging alternative energy issues through innovative solutions for consumers and industry. The need for energy systems that have lower emissions of CO₂ and other greenhouse materials is of paramount importance. The research conducted by the Center, focused primarily on technologies that have immediate relevance for commercialization, has resulted in the development of biofuels, techniques for affordable solar power and technology for water purification.

**CENTER ON BETTER HEALTH AND LIFE FOR
UNDERSERVED POPULATIONS**

Director: Penny A. Ralston

The mission of the Center is to improve health of underserved populations through developing and testing community-based interventions. This is accomplished through developing, implementing and evaluating community-based programs to address health disparities of vulnerable populations and to increase the number of qualified students for the health professions. The Center is also conducting research on health disparities and vulnerable populations to inform the program development process.

INSTITUTE OF SCIENCE AND PUBLIC AFFAIRS (ISPA)

Director: Robert B. Bradley

The overriding mission of the Institute of Science and Public Affairs is to apply university resources to the solution of critical public problems. ISPA provides administrative and support services for specialized centers. These centers were established to respond to public and private needs through programs in education, training, and applied research. The centers provide practical experience and training for students in problem-solving environments under the supervision of experienced faculty and staff.

**CENTER FOR ECONOMIC FORECASTING AND ANALYSIS
(CEFA)**

Director: Julie A. Harrington

The FSU Center for Economic Forecasting and Analysis (CEFA) specializes in conducting economic research and performing economic analyses to examine public policy issues across a spectrum of research areas. CEFA provides advanced research and training in energy, aerospace, environmental economics, and economic development, among other areas. FSU CEFA also serves as a foundation for training students on applied economics, using modeling software and other econometric and statistical tools. FSU CEFA's role is to assist national, state and local government and private and non-sector sector interests in examining and understanding the economic side of current public policy issues facing Florida and the nation.

**CENTER FOR HIGHER EDUCATION RESEARCH,
TEACHING AND INNOVATION (CHERTI)**

Director: T.K. Wetherell

The mission of the Center for Higher Education Research, Teaching and Innovation (CHERTI) is to conduct and promote research on significant issues facing higher education in the State of Florida. This new Center serves these systems by growing and developing faculty resources, student opportunities, and supporting a robust academic community.

**CENTER FOR PREVENTION AND EARLY INTERVENTION
POLICY (CPEIP)**

Director: Mimi Graham

The Center provides leadership for effective prevention and early intervention policy for young children. Neuroscientific research supports the need for universal access to prevention and early intervention services. Its vision is that one day all children will be healthy, equipped to learn, and nurtured to develop their full potential. The Center investigates effective interventions, translates research into public policy and programs, and evaluates long term program impacts. The CPEIP's work combines education, research, and community service.

**FLORIDA CONFLICT RESOLUTION CONSORTIUM
(FCRC) AND FCRC CONSENSUS CENTER**

Director: Robert M. Jones

The FCRC Consensus Center serves as an independent public resource facilitating consensus solutions and supporting collaborative action. It assists citizens and public and private interests in Florida to seek cost-effective solutions to public disputes and problems through the use of consensus building and alternative dispute resolution. It has worked on issues ranging from efforts to insure compatible uses of military airspace to protection of fishery resources.

**FLORIDA RESOURCES AND ENVIRONMENTAL
ANALYSIS CENTER (FREAC)**

Director: James R. Anderson, Jr.

FREAC provides critical support and analysis on Florida's geographic, natural and environmental resources. It provides support to other university centers and departments as well as

conducting its own research activities. Staff members, skilled in cartography, geographic information systems, multimedia programming, web design, and desktop publishing are utilized to complete projects dealing with resource management, environmental analysis, data analysis and formatting, and providing technical support to other university researchers. Through its Florida Natural Areas Inventory Program, services are offered in the areas of Natural Resource Inventory, Ecospatial Analysis, Conservation Planning, and Ecological Monitoring. The Center maintains a large inventory of digital data that is available to government agencies and the private sector.

BEACHES AND SHORES RESOURCE CENTER (BSRC)

Director: Todd L. Walton, Jr.

The center's purpose/mission is to apply its expertise in solving coastal engineering problems to assist state agencies in management of beach resources. It maps the mean high water line for the coast of Florida and studies the factors affecting the coastline. Other examples include longshore sediment transport, beach-dune erosion and extreme storm/hurricane water level return periods.

CENTER FOR THE ADVANCEMENT OF HUMAN RIGHTS (CAHR)

Director: Terence Coonan

The Center for the Advancement of Human Rights engages in interdisciplinary advocacy, education and research on persistent and emerging issues of human rights. It aims to make significant contributions to the promotion, understanding and protection of human rights in this country and abroad. Its primary focus is on training of human rights advocates and serving as a resource center to educate, inform and link students, organizations, lawyers, policymakers, and those engaged in human rights work worldwide. It has worked closely with law enforcement agencies on issues of Human Trafficking.

MIDDLE EAST CENTER

Department of History
Florida State University
Tallahassee, FL 32306-2200

Phone: (850) 644-9516
Director: Professor Peter P. Garretson
pgarretson@fsu.edu
(850) 645-9516
Budget and funding contact: Vicky Bernal
cbernal@fsu.edu
(850) 644-9525
Web site: www.fsu.edu/~mec/

*If multidisciplinary, please list
departments associated with the
C/I*

Within the College of Arts and Sciences: Departments of Classics, Economics, English, Geography, History and Modern Languages (including, Arabic, French and Hebrew) and Religion; College of Law; and within the College of Social Sciences: Departments of Political Science and Urban and Regional Planning.

MISSION AND ACTIVITIES

*What is the Center's or Institute's
mission statement?*

The Middle East Center (MEC) at Florida State University (FSU) is an interdisciplinary center dedicated to the scholarly study of the Middle East. Its mission is to bridge a variety of disciplines on campus in order to provide a rich academic environment for students who are seeking a greater understanding of the Middle East. The Center administers an interdisciplinary Bachelor of Arts in Middle Eastern Studies, as well as three minors in Arabic, Middle Eastern Studies, and Hebrew. The Center has a very active outreach program fostering an interest in the Modern Middle East at the K-12 and Community College levels. Furthermore, its yearly film festival and lecture series provide educational opportunities for students and community members who are interested in the Middle East. The Middle East Center at Florida State University is deeply committed to tolerance and civility.

Briefly, what activities are consistently performed that move the Center/Institute toward meeting its established mission?

- a. The Middle East Center has successfully encouraged interdisciplinary study of the Middle East among faculty and students which has led to greater understanding of the Middle East.
- b. The center includes a Middle East major which has grown from no majors in 2002 to about 45 in 2012. It has a broad range of courses covering many disciplines and has also had a steady number of students minoring in Arabic and Middle East studies.
- c. Throughout its existence the Middle East Center has held successful symposia and film festivals.
- d. The outreach program, largely funded by ARAMCO (the Arabian American Oil company), has successfully been carried out in kindergarten through twelfth grades in many local schools.
- e. The various activities of the Center have fostered tolerance and civility on and off campus.

What is the Center or Institute best known for?

- Coordination of Middle Eastern activities on campus
- Middle East major
- Outreach in the community

What is the greatest strength of the Center or Institute?

The Middle East major. The BA degree in Middle Eastern Studies is the first of its kind in the State of Florida.

What are the most significant challenges facing the Center or Institute?

- Budget constraints
- Lack of staff

FUNDING

(2006–2007 THROUGH 2010–2011)

What is the source and amount of expenditures from 2006-2007 to 2010-2011 for the Center/Institute using the following categories?

Expenditures	2006–2007	2009–2010	2010–2011
University (E&G)	0	0	0
State (General Revenue Other than E&G)	0	0	0
State (C&G)	0	0	0
Federal	\$43,993	0	0
Local	0	0	0
Private / nonprofit organization	\$5,312	\$3,511	\$457
Endowment proceeds	0	0	0
Proceeds from patents or royalties	0	0	0
Sales from services or products	0	0	0
Others (specify)	0	0	0
Total expenditures	\$49,305	\$3,511	\$457

ENDOWMENT INFORMATION

Is the Center/Institute supported in whole or in part by proceeds from an endowment? No

What is the amount of the endowment?

Where is the endowment managed?

Does the C/I spend only interest earnings?

Does the C/I spend part of the capital of the endowment?

CONTRACT AND GRANT INFORMATION

	2006–2007	2009–2010	2010–2011
Number of proposals submitted	1	1	1
Number of proposals funded	1	1	1
Proposals Made Jointly with Individuals not Directly associated with the Center / Institute	0	0	0
Total amount of awards	\$10,000	\$15,000	\$15,000

*Were any of the contracts or grants
multi-year?*

*How many years does the Center
or Institute have left on any current
contract or grant (past 2010-2011)?*

*Have any contracts or grants been
renewed in the period from 2006-
2007 to 2010-2011 and, if so, how
many?*

ARAMCO, once each year

OTHER CENTER OR INSTITUTE ACTIVITIES

Has the Center/Institute generated any patents or royalties?

Has the Center or Institute applied for a patent that has not yet been granted? If so, please describe.

Comments or additional information.

EMPLOYMENT

(2006–2007 THROUGH 2010–2011)

UNIVERSITY POSITIONS ASSOCIATED WITH THE C/I:

	2006–2007	2009–2010	2010–2011
Number of Faculty (FTE)	0	0	0
Number of A&P and USPS positions (FTE)	0	0	0
Total Positions	0	0	0

STUDENT EMPLOYMENT (INCLUDE GRADUATE AND UNDERGRADUATE):

	2006–2007	2009–2010	2010–2011
Number of research assistants employed (FTE)	0	0	0
Number of teaching assistants employed (FTE)	0	0	0
Number of interns (with stipend or OPS)	0	0	0
Number of interns (without pay)	0	0	0
Total student positions	0	0	0

**OTHER STUDENT FINANCIAL BENEFITS
(INCLUDING GRADUATE AND UNDERGRADUATE):**

	2006–2007	2009–2010	2010–2011
	Number/Amount	Number/Amount	Number/Amount
Out of state tuition waivers	0/0	0/0	0/0
Student fellowships	0/0	0/0	0/0
Scholarships	0/0	0/0	0/0
Post-doctoral support	0/0	0/0	0/0
Amt of student travel support	0/0	0/0	0/0
Amt of registration for student conference attendance	0/0	0/0	0/0
Other support (specify)	0/0	0/0	0/0

Comments or additional information

**RESEARCH AND EXTENSION
(2006–2007 THROUGH 2010–2011)**

Note: web-delivered and CD-Rom publications are counted in these totals.

PUBLICATIONS IN REFEREED JOURNALS

Note: Do not include those credited to a faculty member's primary academic department that are unrelated to the C/I mission.

	2006–2007	2009–2010	2010–2011
Number of faculty publications	0	0	0
Number of student publications	0	0	0
Number of publications authored jointly with other faculty at FSU	0	0	0
Number of publications authored jointly with students in the C/I	0	0	0
Number of publications authored jointly with faculty at locations other than FSU	0	0	0

Please have a list of relevant publications available if requested.

OTHER PUBLICATIONS AND CONFERENCE PAPERS

	2006–2007	2009–2010	2010–2011
Number of extension or outreach publications	0	0	0
Number of national conference papers submitted	~20	~15	~10
Number of national conference papers accepted	16	13	9
DATE, CONFERENCE AND NAME OF PRESENTATION(S)	N/A	N/A	N/A
Number of regional conference papers submitted	0	0	0
Number of regional conference papers accepted	0	0	0
DATE, CONFERENCE AND NAME OF PRESENTATION(S)	N/A	N/A	N/A

ANNUAL REPORT

Does the Center or Institute
produce an annual report? If so,
please have copies available or
provide the web link.

No

STUDENT PUBLICATIONS

	2006–2007	2009–2010	2010–2011
Number of student theses credited to or associated with the C/I	0	0	0
Number of dissertations	0	0	0
Number of any other student papers	0	0	0

PROFESSIONAL DEVELOPMENT AND ASSISTANCE

Consulting

	2006–2007	2009–2010	2010–2011
Number of consulting contracts	0	0	0
Name of consulting recipient(s)	0	0	0
Consulting Subject or Topic	N/A	N/A	N/A
Amount of funding provided through general funding of the C/I	0	0	0
Amount of funding obtained through contract in addition to general C/I funds	0	0	0

Technical Assistance

	2006–2007	2009–2010	2010–2011
Number of technical assistance sessions or seminars offered	0	0	0
Name of technical assistance recipient(s)	N/A	N/A	N/A
Technical Assistance Subject or Topic	N/A	N/A	N/A
Amount of Funding	0	0	0

CONFERENCES OR SYMPOSIA

How many conferences or symposia has the Center or Institute sponsored or hosted from 2006-2007 through 2010-2011? Please list.

The Middle East Center has sponsored four symposia during these two periods.

Comments or additional information

Lack of funding prevented further activities

MANAGEMENT

Center/Institute organizational chart

Dean of Arts and Sciences
 Department of History
 Director (Middle East Center)
 Core faculty committee
 Participating Departments

Is the Center or Institute legislatively created?

No

Does the Center/Institute have an advisory board?

No

How often are meetings held?

Does the board manage the C/I or does it serve in an advisory capacity?

Please describe and include a list of current members.

How long has the Center/Institute director served?

Ten years

How does the Center/Institute directorship change?

The Dean of Arts and Sciences makes the final decision.

Are there other issues associated with management transition?

Being a new system, issues do occur, however, they are being managed.

If there are multiple sites, how are they administered? Who has the final oversight?

Comments or additional information

ADDITIONAL ISSUES

Issues facing the Center or Institute

1. The imminent retirement of the long time director and identification of a new director
2. Lack of significant budgetary support

OVERALL EVALUATION

- ✓ The Middle East Center is fulfilling its mission within the university through the establishment of a degree program and associated minors and within the community through symposia and presentations in the public schools
- ✓ There are no E&G funds expended; ROI is not applicable.
- ✓ The Middle East Center encourages interdisciplinary study of the Middle East among faculty and students and should continue.
- ✓ No changes in mission or organizational structure are needed
- ✓ Budget constraints continue to be a problem. However, the Center is successfully coordinating resources from a wide variety of disciplines across campus.
- ✓ No change in classification is needed.
- ✓ Retain active status.

INSTITUTE ON WORLD WAR II AND THE HUMAN EXPERIENCE

401 Bellamy Bldg.
113 Collegiate Loop
Tallahassee, FL 32306-2200

Phone: (850) 644-9545 (Anne Marsh)
Director: Dr. G. Kurt Piehler
kpiehler@fsu.edu
(850) 644-9541
Budget and funding contact: Anne Marsh
amarsh@fsu.edu
(850) 644-9545
Web site: <http://ww2.fsu.edu>

*If multidisciplinary, please list
departments associated with C/I*

History, but the Institute is not multidisciplinary

MISSION AND ACTIVITIES

*What is the Center's or Institute's
mission statement?*

The focus of the Institute on World War II and the Human Experience is collecting and preserving the memories of the men and women who participated in all the military branches, service with the Merchant Marine, Red Cross, USO, workers and volunteers on the Home Front (e.g., ship-building yards, defense plants, YMCA and other clubs) during the WWII era and the immediate post-war period (i.e., 1939 - 1949). The purpose of collecting and preserving this memorabilia is to make it available to college students from Florida State University as well as other universities, documentaries (The History Channel), scholar researchers, genealogy research, History Fair projects, public school classrooms, displays and for other research (e.g., Army Medical Department Regiment).

Briefly, what activities are consistently performed that move the Center/Institute toward meeting its established mission?

- a. Collecting memorabilia – 2011: 90 Collections donated; 2010: 91 Collections donated; 2009: 179 Collections donated; and 2008: 189 Collections donated. The Institute has over 6,600 collections.
- b. Arranging and writing summaries to make collections available to researchers.
- c. Making collections available through a reference room to university students, researchers from other universities, history fair students, as well as outside scholars.
Academic Year
2006 – 2007
Undergraduates: 24
Graduates: 1
History Fair (6 grade) 4
2009 – 2010
Undergraduates: 27
Graduates: 5
Outside researchers: 1
2010 – 2011
Undergraduates: 26
Graduates: 6
Outside researchers: 2
- d. Speaking at WWII reunions, church groups, clubs, retirement communities.
- e. Giving tours to visitors (family, WWII veterans, potential donors, students, etc.).

What is the Center or Institute best known for?

Founded in 1997, the Institute on World War II and the Human Experience is best known for preserving the history of this global conflict. With more than 6,600 individual collections, the Institute maintains one of the nation's largest archives documenting the human dimension of the Second World War with an emphasis on the role of American servicemen and servicewomen, as well as those serving on the home front. The most widely known collection in the Institute was donated by television journalist Tom Brokaw. Scholars and students from a variety of disciplines have used the collections for their books, articles, dissertations, and papers.

What is the greatest strength of the Center or Institute?

It is one of the leading collections documenting the human experience of World War II and a resource for students, scholars, and the general public. The Institute is poised to sponsor a range of scholarly and public programs to increase its visibility. In Fall 2011, the Institute created a work- in-progress seminar that offered a venue for scholars to present their original research related to World War II. In Spring 2012 it held its first annual public lecture and plans call for holding another one in Fall 2012. In November 2012, in conjunction with the Religion Department at Florida State University, the Institute will sponsor a two and half day conference examining the Religious History of World War II. The Institute will soon announce the establishment of a grants-in-aid program to encourage outside scholars and advanced graduate students to use the collection.

What are the most significant challenges facing the Center or Institute?

The Institute must replace its long serving archivist who had to abruptly retire for health reasons with a comparably capable professional. Although much of the Institute's collections have been properly processed and archived, the Institute lacks a searchable catalogue that is accessible to outside scholars and students. Moreover, the Institute's facilities do not meet approved standards for preservation established by the Society of American Archivists. Plans call for the Institute to be housed in a newly proposed Veterans Legacy Complex and the Institute Director has recently submitted a National Endowment Challenge Grant to support the funding of this new building that would provide state of the art archival facilities for the Institute.

FUNDING

(2006–2007 THROUGH 2010–2011)

What is the source and amount of expenditures from 2006-2007 to 2010-2011 for the Center/Institute using the following categories?

Expenditures	2006–2007	2009–2010	2010–2011
University (E&G)	\$13,987	\$10,711	\$13,916
State (General Revenue Other than E&G)	0	0	0
State (C&G)	0	0	0
Federal	\$5,000	0	0
Local	0	0	0
Private / nonprofit organization	0	0	0
Endowment proceeds	\$17,844	\$6,077	\$3,052
Proceeds from patents or royalties	0	0	0
Sales from services or products	0	0	0
Others (Non Endowment)	\$7,468	\$6,000	\$7,502
Total expenditures	\$44,299	\$22,738	\$24,470

ENDOWMENT INFORMATION

Is the Center/Institute supported in whole or in part by proceeds from an endowment?

Yes

What is the amount of the endowment?

Tallahassee Branch of the University of Florida* (TBUF)
 Acquisitions Original Endowment \$25,352.00
 TBUF Fellowship Original Endowment \$21,928.00
 Rintels Original Endowment \$187,500.00
 Langford Original Endowment \$150,000.00
 Bohnstedt Original Endowment \$45,723.00
 Tyner Original Endowment \$145,045.00
 Gibbons Original Endowment \$150,000.00

*When World War II was over and all the G.I.s were going back to school University of Florida could not take any G.I.s they were filled to the max. So they sent the G.I.s to Florida State College for Women (FSCW) so the branch was called TBUF until May 15, 1947 when the Governor signed an act making it Co-educational and changed its name from the FSCW to Florida State University.

Where is the endowment managed? FSU Foundation

Does the C/I spend only interest earnings? Yes

Does the C/I spend part of the capital of the endowment? No

CONTRACT AND GRANT INFORMATION

	2006–2007	2009–2010	2010–2011
Number of proposals submitted	2	0	0
Number of proposals funded	1	0	0
Proposals Made Jointly with Individuals not Directly associated with the Center / Institute	0	0	0
Total amount of awards	\$5,000	0	0

Were any of the contracts or grants multi-year? 0

How many years does the Center or Institute have left on any current contract or grant (past 2010-2011)? 0

Have any contracts or grants been renewed in the period from 2006-2007 to 2010-2011 and, if so, how many? 0

OTHER CENTER OR INSTITUTE ACTIVITIES

Has the Center/Institute generated any patents or royalties? No

Has the Center or Institute applied for a patent that has not yet been granted? If so, please describe. No

Comments or additional information.

EMPLOYMENT

(2006–2007 THROUGH 2010–2011)

UNIVERSITY POSITIONS ASSOCIATED WITH THE C/I:

	2006–2007	2009–2010	2010–2011
Number of Faculty (FTE)	1	Fall/Spr 1 Summer .88	Fall/Spr 1 Summer .5
Number of A&P and USPS positions (FTE)	2	2	2
Total Positions	3	3	3

STUDENT EMPLOYMENT (INCLUDE GRADUATE AND UNDERGRADUATE):

	2006–2007	2009–2010	2010–2011
Number of research assistants employed (FTE)	Fall 3* Spring 4* Summer 5*	Fall 1* Spring 1* Summer 3*	Fall 1* Spring 1* Summer 6*
Number of teaching assistants employed (FTE)	0	0	0
Number of interns (with stipend or OPS)	Fall 0** Spr 0** Sum 0**	Fall 6* Spr 6** Sum 0**	Fall 5** Spr 4* Sum 0**
Number of interns (Volunteers)	Fall 0 Spr 0 Sum 0	Fall 4 (Vol.) Spr 6 (Vol.) Sum 7 (Vol.)	Fall 7 (Vol.) Spr 3 (Vol.) Sum 4 (Vol.)
Total student positions	12	34	31

*Graduate Assistants

**Federal Work Study Students

**OTHER STUDENT FINANCIAL BENEFITS
(INCLUDING GRADUATE AND UNDERGRADUATE):**

	2006–2007	2009–2010	2010–2011
	Number/Amount	Number/Amount	Number/Amount
Out of state tuition waivers	0/0	0/0	28/\$7,216
Student fellowships	0/0	0/0	0/0
Scholarships	0/0	0/0	0/0
Post-doctoral support	0/0	0/0	0/0
Amt of student travel support	0/0	0/0	0/0
Amt of registration for student conference attendance	0/0	0/0	0/0
Other support (specify)	0/0	0/0	0/0

Comments or additional information

**RESEARCH AND EXTENSION
(2006–2007 THROUGH 2010–2011)**

Note: web-delivered and CD-Rom publications are counted in these totals.

PUBLICATIONS IN REFEREED JOURNALS

Note: Do not include those credited to a faculty member's primary academic department that are unrelated to the C/I mission.

	2006–2007	2009–2010	2010–2011
Number of faculty publications	0	0	0
Number of student publications	0	0	0
Number of publications authored jointly with other faculty at FSU	0	0	0
Number of publications authored jointly with students in the C/I	0	0	0
Number of publications authored jointly with faculty at locations other than FSU	0	0	0

Please have a list of relevant publications available if requested.

OTHER PUBLICATIONS AND CONFERENCE PAPERS

	2006–2007	2009–2010	2010–2011
Number of extension or outreach publications	0	0	1*
Number of national conference papers submitted	0	0	0
Number of national conference papers accepted	0	0	0
DATE, CONFERENCE AND NAME OF PRESENTATION(S)	N/A	N/A	N/A
Number of regional conference papers submitted	0	0	0
Number of regional conference papers accepted	0	0	0
DATE, CONFERENCE AND NAME OF PRESENTATION(S)	NA	NA	N/A

*Book: *Hello Honey: World War II Letters of An American "Everyman" Captain Joseph Upchurch*, Edited by William Oldson

ANNUAL REPORT

Does the Center or Institute produce an annual report? If so, please have copies available or provide the web link.

No

STUDENT PUBLICATIONS

	2006–2007	2009–2010	2010–2011
Number of student theses credited to or associated with the C/I	1	1*	0
Number of dissertations	0	0	1
Number of any other student papers	0	0	0

*Honor Thesis

PROFESSIONAL DEVELOPMENT AND ASSISTANCE

Consulting

	2006–2007	2009–2010	2010–2011
Number of consulting contracts	0	0	0
Name of consulting recipient(s)	0	0	0
Consulting Subject or Topic	N/A	N/A	N/A
Amount of funding provided through general funds of the C/I	0	0	0
Amount of funding obtained through contract in addition to general C/I funds	0	0	0

Technical Assistance

	2006–2007	2009–2010	2010–2011
Number of technical assistance sessions or seminars offered	0	0	0
Name of technical assistance recipient(s)	N/A	N/A	N/A
Technical Assistance Subject or Topic	N/A	N/A	N/A
Amount of Funding	0	0	0

CONFERENCES OR SYMPOSIA

How many conferences or symposia has the Center or Institute sponsored or hosted from 2006-2007 through 2010-2011?
Please list.

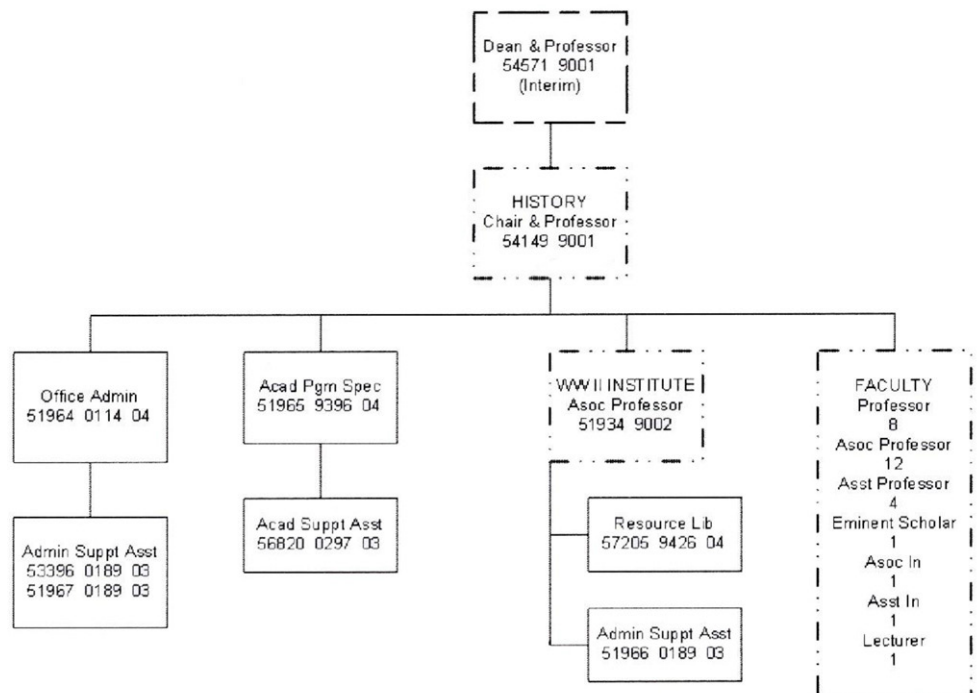
0

Comments or additional information

MANAGEMENT

Center/Institute organizational chart

**Institute on World War II and the Human Experience
Organizational Chart**



*Is the Center or Institute
legislatively created?*

No

*Does the Center/Institute have an
advisory board?*

Advisory Board was established in 2006 to assist in promoting the mission and goals of the Institute on WWII. The Advisory Board has consisted of individuals who have made major gifts to the Institute and/or serve as a source of expertise. Newly appointed director G. Kurt Piehler has been working in cooperation with the Assistant Dean for Development for the College of Arts and Sciences, Nancy Smilowitz, to hold semi-annual meetings. The Institute Advisory Board is expected to take a leadership role in the capital campaign to fund a new home for the Institute.

How often are meetings held?

Semi-annually

*Does the board manage the C/I
or does it serve in an advisory
capacity?*

They serve in advisory capacity as well as helping with development activities (fund raising) and recruiting additional board members.

*Please describe and include a list
of current members*

Mrs. Portia Ackerman (2006 - Present)

In 1943 Portia Ackerman graduated from Florida State College for Women with a double major in English and Library Science. She has donated her husband's memorabilia. He was a B24 pilot in WWII in the European theatre, flying out of Norwich, England.

Mr. Tom Brokaw (National Honorary Chairman) (2006 - Present)

Tom Brokaw, a native of South Dakota, graduated from the University of South Dakota with a degree in political science. He began his journalism career in Omaha and Atlanta before joining NBC News in 1966. As Brokaw's third book in the Greatest Generation series, *Album of Memories: Personal Histories from the Greatest Generation* was released, Brokaw announced that he would donate his correspondence with veterans and their families to the Institute on World War II and the Human Experience. In 2001, he shipped more than 1,300 veteran's correspondences.

Mr. Joseph Brown (2006 - Present)

Colonel Joseph Brown (USA Ret.) had two careers – first as an Infantry officer and then as president of a defense consulting company. His career began as a Distinguished Military Graduate from Georgia Tech, and after Ranger and Airborne training he completed an assignment to the

101st Airborne Division. Subsequent assignments included two tours of combat duty in Vietnam, two Pentagon assignments, a teaching position at West Point, and command of a research and development organization. During his military career he obtained two master's degrees.

Mrs. Theresa Brown (2006 – Present)

After spending time as a high school exchange student in Germany, Theresa Brown attended Agnes Scott College and graduated from FSU with a degree in International Relations and History. A military wife for 25 years, Theresa's career has been a combination of journalism and travel. Her accomplishments include writing a daily column for the Thomasville Times Enterprise, the weekly column West Point Bulletin, and the family column for the military – wide Infantry Journal. In addition she covered the Carter Inauguration, and was named Military Wife of the Year on three separate occasions.

Mrs. Anne Coloney (2006 – Present)

Anne Coloney was raised in Tallahassee, a town that changed immensely with the advent of World War II when Dale Mabry Field and Camp Gordon Johnson brought an influx of soldiers and wives. When she married a G.I., at that point that war really came alive for her.

Mr. Wayne Coloney (2006 – Present)

A Florida native, Wayne comes from a family having a strong military background with ancestors who fought in the Revolution, the Mexican War and the Civil War. A graduate of Georgia Tech, he has practiced engineering in Venezuela, Guatemala, the Bahamas, Bermuda, New York City and Europe. Wayne H. Coloney Company, Inc. designed and manufactured weapons support systems for U.S. and foreign military services. The Coloney Ammo Handling System for the A-10 aircraft is scheduled for use through the year 2020.

Mrs. Mart Hill (2006 – Present)

Mart is a 1942 graduate of Florida State College for Women with a degree in English. Mart has served as a member of the Fine Arts Council of Florida, President of the Tallahassee Junior League and President of the Tallahassee museum.

Mr. George Langford (2006 – Present)

George Langford, a Tallahassee businessman with a Juris Doctor degree from the University of Virginia, is well known for his civic activities and his dedication to Florida State University programs. The Langford's' academic and

athletic enthusiasm led them to give \$2 million for eminent scholar chairs in the Department of Classics and in the College of Law as well as \$1 million to the construction of Langford Green adjacent to Doak Stadium. Continuing their spirit of philanthropy, the Langfords conferred a \$100,000 endowment gift to the Institute on World War II and the Human Experience. Mr. Langford's own wartime experience prompted this gift. He served in Europe as a U.S. Army combat engineer during the War, but more importantly, he wanted to honor his brother who was killed in the Philippines just before the surrender of the Axis powers in Europe. He has designated that his gift be used for promotional travel and national exhibit tours. Mr. Langford has also contributed his own collection of artifacts and letters saved by his mother from all four of her children serving abroad during the War.

Mr. Brooks Pettit (2011 – Present)

Brooks Pettit graduated from Harvard College in 1964 with a B.A. in Germanic Languages and Literature. He then received his masters in 1968 from the Middlebury College Graduate Language Program, specializing in German language and Literature. He attended Boston University for two years of course work toward a Ph.D. in literature in the Reformation. He served in the United States Marine Corps from 1958-61. Mr. Pettit is an avid volunteer. At the FSU School of Theatre, he has been the Chair of Major Gifts Committee and the Patrons Association. He is a founding member of the Community Foundation of North Florida (2001-2010). During that time he was president, and vice president, on the Executive Committee and the Investment Committee. He was a board member and fundraiser for the Boys Choir of Tallahassee. He and his wife, Almena, were selected as Philanthropists of the Year in 2009. Currently, he consults occasionally and informally with local non-profits regarding annual giving and capital campaigns. He is a member of the FSU President's Club, member of the Westcott Society and a Seminole Boosters contributor.

Mr. Robert Porter (2007 – Present)

Grandson of a career World War II, USAAF veteran, Robert Porter has been an avid scholar of the WWII effort throughout his entire life. Robert spent a brief period in the United States Air Force upon graduation from the Georgia Institute of Technology with a degree in Management. Upon discharge from the Air Force, Robert went on to pursue a career as a marketing professional in the furniture industry. His considerable understanding of things related to the "The War" coupled with his marketing and technical affords ample opportunity to promote and preserve the

legacy of his true Primary Passion – America’s Greatest Generation.

Mr. Harold Ronson (2006 – Present)

Harold Ronson graduated from the Philadelphia Textile Institute in 1951 with a degree in Chemistry and Dyeing. Mr. Ronson served in World War II from 1944 to 1946 as a member of the United States Navy in the Landing Craft Infantry unit.

Mr. Arthur Stern (2006 – Present)

Arthur L. Stern III is a practicing attorney in Tallahassee, concentrating in estate and tax planning and commercial litigation. He graduated from Harvard Law School in 1965, and has lived and worked in Tallahassee, Florida since 1993. He serves as the representative for the Rintels Foundation that is active with the Institute for World War II and the Human Experience.

How long has the Center/Institute director served?

The first director served as director from the beginning of the Institute (1997) until April 2011 when Dr. Oldson retired from the university. The current director, Dr. G. Kurt Piehler was appointed Fall 2011.

How does the Center/Institute directorship change?

The directorship is appointed by the History Department. The director holds tenured faculty rank.

Are there other issues associated with management transition?

No

If there are multiple sites, how are they administered? Who has the final oversight?

Comments or additional information

ADDITIONAL ISSUES

Issues facing the Center or Institute

OVERALL EVALUATION

- ✓ The Institute is meeting its mission of acting as a repository of memorabilia from the WWII era for the purpose of providing information to FSU students, scholars and the general public for research and information purposes. Its users have produced documentaries, conducted genealogy research and offered public schools a resource for instruction. The Institute also sponsors tours of the facility and lectures on topics related to the era.
- ✓ The average rate of return on its E&G investment is 1:1:35.
- ✓ As a primary source for this information, the Institute should continue. With over 6,600 collections to date, it provides a wealth of knowledge about this time in our history. It remains a valuable asset to FSU and other private and public users.
- ✓ No changes are necessary to its mission or organizational structure. There has been a change in leadership but the Institute is working to find a permanent Director.
- ✓ The Institute is funded by E&G and endowment proceeds. Its funding structure is not expected to change, though efforts are underway to obtain a permanent structure for its collections that is appropriate for archival purposes.
- ✓ No change in classification is needed.
- ✓ Retain active status.

CENTER FOR INTELLIGENT SYSTEMS, CONTROL, AND ROBOTICS (CISCOR)

2003 Levy Ave.
Tallahassee, FL 32310
Mailing Address:
2525 Pottsdamer St.
Rm. A229
Tallahassee, FL 32310

Phone: (850) 410-6373
Director: Emmanuel G. Collins
ecollins@eng.fsu.edu
(850) 410-6373
Budget and funding contact: Jon Cloos
cloos@eng.fsu.edu
(850) 410-6333
Web site: <http://www.eng.fsu.edu/ciscor/>

*If multidisciplinary, please list
departments associated with C/I*

Mechanical Engineering, Electrical Engineering, Computer
Science

MISSION AND ACTIVITIES

*What is the Center's or Institute's
mission statement?*

The vision of the Center for Intelligent Systems, Control, and Robotics (CISCOR) is to use state-of-the-art technology to develop practical solutions to problems in systems, control and robotics for applications in industry and government.

*Briefly, what activities are
consistently performed that move
the Center/Institute toward meeting
its established mission?*

- a. Proposal Writing
- b. Publications in Refereed Journals and Technical Conferences
- c. Graduation of PhD and MS Students
- d. Collaboration with World Class Researchers Outside of FSU
- e. Providing Lab Tours

What is the Center or Institute best known for?

It is best known for designing and building robots to traverse difficult terrains and developing robot intelligence that provides these robots with autonomy.

What is the greatest strength of the Center or Institute?

The Center has a very collaborative environment and strong research staff and graduate students.

What are the most significant challenges facing the Center or Institute?

We need more faculty researchers. Of course, it is always difficult to sustain funding, although we are currently doing well.

FUNDING (2006–2007 THROUGH 2010–2011)

What is the source and amount of expenditures from 2006-2007 to 2010-2011 for the Center/Institute using the following categories?

Expenditures	2006–2007	2009–2010	2010–2011
University (E&G)	0	0	0
State (General Revenue Other than E&G)	\$25,000	0	0
State (C&G)	0	0	0
Federal	\$50,000	\$265,000	\$420,000
Local	0	0	0
Private / nonprofit organization	0	0	0
Endowment proceeds	0	0	0
Proceeds from patents or royalties	0	0	0
Sales from services or products	0	0	0
Others (Specify)	0	0	0
Total expenditures	\$75,000	\$265,000	\$420,000

ENDOWMENT INFORMATION

Is the Center/Institute supported in whole or in part by proceeds from an endowment? No

What is the amount of the endowment?

Where is the endowment managed? FSU Foundation

Does the C/I spend only interest earnings?

Does the C/I spend part of the capital of the endowment?

CONTRACT AND GRANT INFORMATION

	2006–2007	2009–2010	2010–2011
Number of proposals submitted	3	5	7
Number of proposals funded	2	3	3
Proposals Made Jointly with Individuals not Directly associated with the Center / Institute	0	2	3
Total amount of awards	\$450,000	\$950,000	\$525,000

Were any of the contracts or grants multi-year? Yes

How many years does the Center or Institute have left on any current contract or grant (past 2010-2011)? 6 years

Have any contracts or grants been renewed in the period from 2006-2007 to 2010-2011 and, if so, how many? 4

OTHER CENTER OR INSTITUTE ACTIVITIES

Has the Center/Institute generated any patents or royalties?

No

Has the Center or Institute applied for a patent that has not yet been granted? If so, please describe.

Sampling Based Trajectory Generation for a Manipulator. This invention generally relates to the control of manipulators, and more particularly to sampling-based methodology for direct trajectory planning of manipulators with heavy loads.

Comments or additional information.

EMPLOYMENT

(2006–2007 THROUGH 2010–2011)

UNIVERSITY POSITIONS ASSOCIATED WITH THE C/I:

	2006–2007	2009–2010	2010–2011
Number of Faculty (FTE)	0	1	1
Number of A&P and USPS positions (FTE)	0	0	0
Total Positions	0	1	1

STUDENT EMPLOYMENT (INCLUDE GRADUATE AND UNDERGRADUATE):

	2006–2007	2009–2010	2010–2011
Number of research assistants employed (FTE)	2	4	4
Number of teaching assistants employed (FTE)	0	0	0
Number of interns (with stipend or OPS)	0	3	3
Number of interns (Volunteers)	0	0	0
Total student positions	2	7	7

**OTHER STUDENT FINANCIAL BENEFITS
(INCLUDING GRADUATE AND UNDERGRADUATE):**

	2006–2007	2009–2010	2010–2011
	Number/Amount	Number/Amount	Number/Amount
Out of state tuition waivers	2/\$1,203	4/\$3,661	4/\$3,626
Student fellowships	0/0	0/0	0/0
Scholarships	0/0	0/0	0/0
Post-doctoral support	0/0	1/\$50,000	1/\$55,000
Amt of student travel support	N/A/\$2,000	N/A/\$5,000	N/A/\$5,000
Amt of registration for student conference attendance	N/A/\$200	N/A/\$500	N/A/\$500
Other support (specify)	0/0	0/0	0/0

Comments or additional information

**RESEARCH AND EXTENSION
(2006–2007 THROUGH 2010–2011)**

Note: web-delivered and CD-Rom publications are counted in these totals.

PUBLICATIONS IN REFEREED JOURNALS

Note: Do not include those credited to a faculty member's primary academic department that are unrelated to the C/I mission.

	2006–2007	2009–2010	2010–2011
Number of faculty publications	3	4	4
Number of student publications	0	0	0
Number of publications authored jointly with other faculty at FSU	2	3	2
Number of publications authored jointly with students in the C/I	3	4	4
Number of publications authored jointly with faculty at locations other than FSU	1	1	1

Please have a list of relevant publications available if requested.

OTHER PUBLICATIONS AND CONFERENCE PAPERS

	2006–2007	2009–2010	2010–2011
Number of extension or outreach publications	0	1	3
Number of national conference papers submitted	*	*	*
Number of national conference papers accepted	7	7	12
DATE, CONFERENCE AND NAME OF PRESENTATION(S)	**	**	**
Number of regional conference papers submitted	0	*	0
Number of regional conference papers accepted	0	2	0
DATE, CONFERENCE AND NAME OF PRESENTATION(S)	N/A	**	N/A

*Not tracked

**Available upon request

ANNUAL REPORT

Does the Center or Institute
produce an annual report? If so,
please have copies available or
provide the web link.

No

STUDENT PUBLICATIONS

	2006–2007	2009–2010	2010–2011
Number of student theses credited to or associated with the C/I	0	0	1
Number of dissertations	1	2	5
Number of any other student papers	0	0	0

*Honor Thesis

PROFESSIONAL DEVELOPMENT AND ASSISTANCE

Consulting

	2006–2007	2009–2010	2010–2011
Number of consulting contracts	0	0	0
Name of consulting recipient(s)	N/A	N/A	N/A
Consulting Subject or Topic	N/A	N/A	N/A
Amount of funding provided through general funding of the C/I	0	0	0
Amount of funding obtained through contract in addition to general C/I funds	0	0	0

Technical Assistance

	2006–2007	2009–2010	2010–2011
Number of technical assistance sessions or seminars offered	0	0	0
Name of technical assistance recipient(s)	N/A	N/A	N/A
Technical Assistance Subject or Topic	N/A	N/A	N/A
Amount of Funding	0	0	0

CONFERENCES OR SYMPOSIA

How many conferences or symposia has the Center or Institute sponsored or hosted from 2006-2007 through 2010-2011? Please list.

0

Comments or additional information

MANAGEMENT

Center/Institute organizational chart

Dr. Emmanuel Collins serves as Director of CISCOR. Dr. Jonathan Clark serves as Associate Director. There are currently 8 faculty in the departments of Mechanical Engineering, Electrical and Computer Engineering, and Computer Science who are member researchers in CISCOR. CISOGR also has one Assistant Scholar Scientist.

Is the Center or Institute legislatively created?

No

Does the Center/Institute have an advisory board?

No

How often are meetings held?

Does the board manage the C/I or does it serve in an advisory capacity?

Please describe and include a list of current members

How long has the Center/Institute director served?

The Director has served since August 2003.

How does the Center/Institute directorship change?

There is currently no process for this, other than the standard process within this College.

Are there other issues associated with management transition?

No

If there are multiple sites, how are they administered? Who has the final oversight?

Comments or additional information

ADDITIONAL ISSUES

Issues facing the Center or Institute

OVERALL EVALUATION

- ✓ The Center is performing activities consistent with its mission, through research, publications and presentations. It also has a patent pending for a sampling-based methodology for direct trajectory planning of manipulators with heavy loads.
- ✓ There is no University E&G funding for the Center; an ROI calculation is not applicable.
- ✓ The Center serves a valuable purpose, both in industry applications and opportunities for faculty and student research. It provides employment for one faculty member and several student researchers. That research has culminated in several doctorates.
- ✓ For the past two years, CISCOR has been funded exclusively through federal grants. The Center will continue to pursue research grant opportunities.
- ✓ No change in classification is recommended.
- ✓ Retain active status.

HIGH-PERFORMANCE MATERIALS INSTITUTE (HPMI)

Materials Research Building
2005 Levy Ave.
Tallahassee, FL 32310

Phone: (850) 645-8984
Director: Operations Director: W. Frank Allen
fallen@fsu.edu
(850) 645-8984
Budget and funding contact: John Taylor
jotaylor@eng.fsu.edu
(850) 410-6341
Web site: www.hpmi.net

MISSION AND ACTIVITIES

What is the Center's or Institute's mission statement?

- Conduct and promote a broad range of multidisciplinary research and integration to improve the performance and affordability of advanced composite materials and structures;
- Expand the pool of well-educated and multidisciplinary-trained engineers and scientists for a technology sector of national and global significance; and
- Work with technology transfer and economic development professionals in commercializing composite technology and increasing economic impact.

Briefly, what activities are consistently performed that move the Center/Institute toward meeting its established mission?

- Seek partners to further advance materials research.
- Select and train student researchers to enter the high tech engineering workforce.
- Work with the Economic Development Council, Enterprise Florida and Florida Great Northwest to encourage industry to move and develop in Florida.
- Encourage publishing in peer reviewed journals and promote our research at various conferences.
- Identify need for expanding our research, such as using composites for making prosthetics lighter and more comfortable.

What is the Center or Institute best known for?

HPMI research works to make materials, especially composite materials, stronger, lighter, multifunctional and more affordable. HPMI is known for its work involving nanotechnology through the use of buckypaper, which are thin sheets of nanotubes.

What is the greatest strength of the Center or Institute?

Access to cutting edge research equipment totaling to approximately \$20 million.

What are the most significant challenges facing the Center or Institute?

The institute is undergoing a leadership change following its former director recently moving to Georgia Tech earlier this year. Although the director is on a 12-month leave of absence, we do not expect him to return.

FUNDING (2006–2007 THROUGH 2010–2011)

What is the source and amount of expenditures from 2006-2007 to 2010-2011 for the Center/Institute using the following categories?

Expenditures	2006–2007	2009–2010	2010–2011
University (E&G)	N/A	N/A	N/A
State (General Revenue Other than E&G)	N/A	N/A	N/A
State (C&G)	\$26,179	\$255,347	\$362,040
Federal	\$1,772,620	\$2,404,881	\$1,699,186
Local	\$13,236	\$106,763	N/A
Private / nonprofit organization	\$222,065	\$471,709	\$532,588
Endowment proceeds	N/A	N/A	N/A
Proceeds from patents or royalties	N/A	N/A	N/A
Sales from services or products	N/A	N/A	N/A
Others (specify)	N/A	N/A	N/A
Total expenditures	\$2,020,864	\$3,131,937	\$2,593,814

ENDOWMENT INFORMATION

Is the Center/Institute supported in whole or in part by proceeds from an endowment? No

What is the amount of the endowment?

Where is the endowment managed?

Does the C/I spend only interest earnings?

Does the C/I spend part of the capital of the endowment?

CONTRACT AND GRANT INFORMATION

	2006–2007	2009–2010	2010–2011
Number of proposals submitted	25	50	26
Number of proposals funded	8	10	11
Proposals Made Jointly with Individuals not Directly associated with the Center / Institute	9	10	2
Total amount of awards	\$3,454,787	\$3,428,374	\$4,679,308

Were any of the contracts or grants multi-year? Of current contracts, only ~5 are not multiyear

How many years does the Center or Institute have left on any current contract or grant (past 2010-2011)? 5 expire 2012
5 expire 2013
5 expire 2014

Have any contracts or grants been renewed in the period from 2006-2007 to 2010-2011 and, if so, how many? ~7

OTHER CENTER OR INSTITUTE ACTIVITIES

Has the Center/Institute generated any patents or royalties?

Yes

- A Method Functionalization of Nanoscale Fibers and Nanoscale Fiber Films U.S. Patent 7862766
- Vacuum-Assisted Resin Transfer Molding Flow-Tracking Process and System US Patent 7797075
- Method for Mechanically Chopping Carbon Nanotube and Nanoscale Fibrous Materials US Patent 7641829
- A Method for Continuous Fabrication of Carbon Nanotube Networks or Membrane Materials US Patent 7459121

Has the Center or Institute applied for a patent that has not yet been granted? If so, please describe.

Yes

- Nanofiber Flame and Smoke Shield for Fiber Reinforced Polymer Composites Provisional Application Serial No. 61/325,009
- Method for Making High-Performance Carbon Nanotube Reinforced Polymer Composites Provisional Application Serial No. 61/326,011
- Functionalization of Nanoscale Fibers and Functionalized Nanoscale Fiber Films Provisional Application Serial No. 61/312,563
- Methods of Fabricating Ceramic Preforms with 2-D Channels and Structures Produced Thereby 19585-0126
- Carbon Nanotube Honeycomb and Methods of Making and Use Thereof Provisional Patent Application No. 611362,500
- Binder-Free Nanocomposite Material and Method of Manufacture Provisional Application Serial No. 611259,599
- Method for Functionalization of Nanoscale Fibers and Nanoscale Fiber Films Provisional Patent Application No. 61/147,942
- Electromagnetic Interference Shielding Structure Including Carbon Nanotube or Nanofiber Film Composites Provisional Patent Application No. 61/147,939
- Alignment of Nanoscale Fibers by Mechanical Stretching Provisional Patent Application No. 61/145,849
- A Method to Increase Through-Thickness Thermal Conductivity in Composites through Stitching Approach U.S. Provisional Patent Application No. 61/083,786
- Carbon Nanotube and Nanofiber Film Based Membrane Electrode Assemblies for Fuel Cells U.S. Provisional Patent Application No. 61/081,851

- A Sensor and a Method of Making Sensor U.S. Provisional Patent Application No. 61/057,353
- Nanoscale Fiber Prepreg Films and Methods U.S. Provisional Application Serial No. 61/048,383
- A Method to Fabricate Carbon Nanotube and Nanofiber Buckypaper/Solid Electrolyte Actuator Devices to Work without Liquid Electrolyte (Actuator Device Including Carbon Nanotube Films) U.S. Provisional Patent Application No. 61/048,380
- Fabrication of Fire Retardant Polymer Composites with Nanotubes U.S. Provisional Patent Application No. 60/982,959
- A Method to Fabricate Lightweight EMI Shielding Structures Using Carbon Nanotube and Nanofiber Film Materials U.S. Patent Application No. 11/751,655
- A Method To Fabricate Multiple-Walled Carbon Nanotube And Nanofiber Film Materials U.S. Patent Application No. 11/670,687

Comments or additional information.

EMPLOYMENT

(2006–2007 THROUGH 2010–2011)

UNIVERSITY POSITIONS ASSOCIATED WITH THE C/I:

	2006–2007	2009–2010	2010–2011
Number of Faculty (FTE)	1.27	2.82	2.32
Number of A&P and USPS positions (FTE)	1	1	1
Total Positions	2.27	3.82	3.32

STUDENT EMPLOYMENT (INCLUDE GRADUATE AND UNDERGRADUATE):

	2006–2007	2009–2010	2010–2011
Number of research assistants employed (FTE)	39	49	45
Number of teaching assistants employed (FTE)	0	0	0
Number of interns (with stipend or OPS)	0	14	14
Number of interns (without pay)	N/A	N/A	1
Total student positions	39	49	45

**OTHER STUDENT FINANCIAL BENEFITS
(INCLUDING GRADUATE AND UNDERGRADUATE):**

	2006–2007	2009–2010	2010–2011
	Number/Amount	Number/Amount	Number/Amount
Out of state tuition waivers	N/A/N/A	28/\$333,232	28/\$326,304
Student fellowships	N/A/N/A	N/A/N/A	N/A/1
Scholarships	0/0	0/0	0/0
Post-doctoral support	7/7	6/6	5/5
Amt of student travel support	NA/NA	NA/NA	NA/NA
Amt of registration for student conference attendance	NA/NA	NA/NA	NA/NA
Other support (specify)	N/A/N/A	N/A/N/A	N/A/N/A

Comments or additional information

**RESEARCH AND EXTENSION
(2006–2007 THROUGH 2010–2011)**

Note: web-delivered and CD-Rom publications are counted in these totals.

PUBLICATIONS IN REFEREED JOURNALS

Note: Do not include those credited to a faculty member's primary academic department that are unrelated to the C/I mission.

	2006–2007	2009–2010	2010–2011
Number of faculty publications	2	1	1
Number of student publications	0	0	0
Number of publications authored jointly with other faculty at FSU	1	1	1
Number of publications authored jointly with students in the C/I	9	6	11
Number of publications authored jointly with faculty at locations other than FSU	2	8	6

Please have a list of relevant publications available if requested.

OTHER PUBLICATIONS AND CONFERENCE PAPERS

	2006–2007	2009–2010	2010–2011
Number of extension or outreach publications	0	0	0
Number of national conference papers submitted	~20	~15	~10
Number of national conference papers accepted	16	13	9
DATE, CONFERENCE AND NAME OF PRESENTATION(S)	*	*	*
Number of regional conference papers submitted	0	0	0
Number of regional conference papers accepted	0	0	0
DATE, CONFERENCE AND NAME OF PRESENTATION(S)	NA	NA	N/A

*Available on request

ANNUAL REPORT

Does the Center or Institute
produce an annual report? If so,
please have copies available or
provide the web link.

No

STUDENT PUBLICATIONS

	2006–2007	2009–2010	2010–2011
Number of student theses credited to or associated with the C/I	14	7	7
Number of dissertations	5	4	2
Number of any other student papers	0	2	2

PROFESSIONAL DEVELOPMENT AND ASSISTANCE

Consulting

	2006–2007	2009–2010	2010–2011
Number of consulting contracts	0	0	0
Name of consulting recipient(s)	N/A	N/A	N/A
Consulting Subject or Topic	N/A	N/A	N/A
Amount of funding provided through general funding of the C/I	0	0	0
Amount of funding obtained through contract in addition to general C/I funds	0	0	0

Technical Assistance

	2006–2007	2009–2010	2010–2011
Number of technical assistance sessions or seminars offered	14	12	17
Name of technical assistance recipient(s)	*	*	*
Technical Assistance Subject or Topic	**	**	**
Amount of Funding	N/A	N/A	N/A

*Florida Law Enforcement, Florida Adult Educators

**Human Trafficking

CONFERENCES OR SYMPOSIA

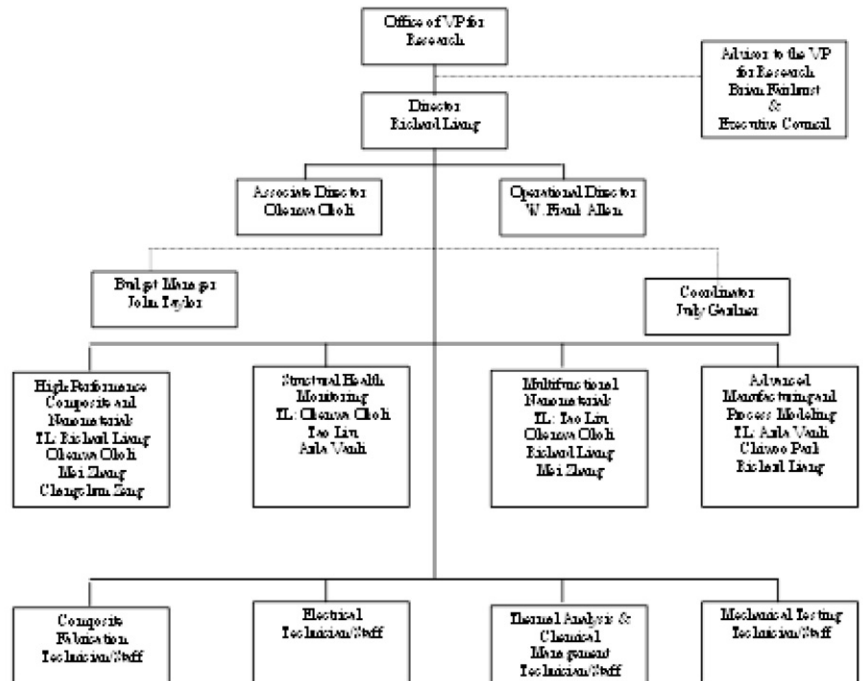
How many conferences or symposia has the Center or Institute sponsored or hosted from 2006-2007 through 2010-2011? Please list.

Hosted NSF Sponsored Multifunctional Composites Workshop February 23–24, 2011

Comments or additional information

MANAGEMENT

Center/Institute organizational
chart



Is the Center or Institute
legislatively created?

No

Does the Center/Institute have an
advisory board?

How often are meetings held?

Does the board manage the C/I
or does it serve in an advisory
capacity?

Please describe and include a list
of current members.

How long has the Center/Institute director served?

Prior to his leave of absence, the director served since its creation in 2006. He started his leave of absence in January 2012.

How does the Center/Institute directorship change?

Based on a recommendation by the FSU VP for Research and the PIs, a leadership team was established. Dr. Richard Liang was recently named as director.

Are there other issues associated with management transition?

Being a new system, issues do occur, however, they are being managed.

If there are multiple sites, how are they administered? Who has the final oversight?

Comments or additional information

ADDITIONAL ISSUES

Issues facing the Center or Institute

As with probably every C/I, due to the economy we have seen a decline in grants over recent years; however, we have been finding additional opportunities with private business, such as Raytheon, Boeing and ATK.

We are also providing additional information to the Veterans Administration for a large grant to apply in prosthetics research.

OVERALL EVALUATION

- ✓ The High Performance Materials Institute (HPMI) demonstrates consistency with its mission statement through development of materials and strategies worthy of patents (4 patents held and 14 patents applied for), a very strong research component and partnerships with major private corporations supporting application of research results.
- ✓ There are no state E&G funds included in HPMT's budget; a return on investment calculation is not applicable.
- ✓ The Institute should continue its work. Through its research component, it is providing a wealth of transferrable information as evidenced by its patent activity. Also, through its research component, it provides employment for over 3 faculty and professional positions and 45 student research assistants. Along with its 15 internships, the total student employment is approximately 60 per year. These opportunities have resulted in numerous theses and dissertations. Scientists at HPMT publish their findings and present at national conferences regularly.
- ✓ There is no need to change their mission or organizational structure.
- ✓ HPMT is continuing to seek grants to continue its work. Recent efforts have focused on corporations such as Raytheon and Boeing. It is also working to provide additional information to the US Veterans Administration for a grant to work on prosthetics.
- ✓ No change in classification is needed.
- ✓ Retain active status.

FLORIDA CENTER FOR ADVANCED AERO-PROPULSION (FCAAP)

2003 Levy Ave
Tallahassee, FL 32310

Phone: (850) 645-2631
Director: Dr. Farrukh Alvi
alvi@eng.fsu.edu
(850) 644-0053
Budget and funding contact: Nicole Lawrence
enlawrence@admin.fsu.edu
(850) 645-0130
Web site: <http://www.fcaap.com/>

*If multidisciplinary, please list
departments associated with C/I*

MISSION AND ACTIVITIES

*What is the Center's or Institute's
mission statement?*

To be a technical educational focal point, as well as a resource & 'solutions' center for Florida and the nation in aerospace, aviation and related areas.

*Briefly, what activities are
consistently performed that move
the Center/Institute toward meeting
its established mission?*

- a. Developing a Center-focused approach to pursuing opportunities in research and education and developing educational and outreach programs.
- b. Creating stronger ties with Industry and other aerospace stakeholders by marketing the Center's collective resources.
- c. Strategically investing in infrastructure and personnel to 'fill in the gaps' and enhance FCAAP's intellectual and physical capital.
- d. Significant success in winning large, FCAAP-wide (multi-institutional) awards, eg. FAA COE on Commercial Space, and NSF-MRI among others. The Center works with the Universities of Florida, Central Florida and Embry-Riddle Aeronautical University (ERAU).
- e. Established FCAAP headquarters at the new Aeropropulsion, Mechatronics and Energy (AME) research building.

What is the Center or Institute best known for?

Unique collection of advanced testing and computational resources and expertise in aerospace-related engineering and sciences.

What is the greatest strength of the Center or Institute?

Our collective resources which give us the ability to tackle a broader array of problems.

What are the most significant challenges facing the Center or Institute?

The Center funding from the state was reduced by 25% in the first year (2008). A continued base-level of funding is needed to maintain the minimum infrastructure and personnel which is critical to the continued cohesion and growth of FCAAP.

FUNDING (2006–2007 THROUGH 2010–2011)

What is the source and amount of expenditures from 2006-2007 to 2010-2011 for the Center/Institute using the following categories?

Expenditures	2006–2007	2009–2010	2010–2011
University (E&G)	N/A	0	0
State (General Revenue Other than E&G)	N/A	0	0
State (C&G)	N/A	\$2,257,228	\$1,933,984
Federal	N/A	\$3,550,000	\$3,400,000
Local	N/A	0	0
Private / nonprofit organization	N/A	\$888,000	\$850,000
Endowment proceeds	N/A	0	0
Proceeds from patents or royalties	N/A	0	0
Sales from services or products	N/A	0	0
Others (Specify)	N/A	0	0
Total expenditures	N/A	\$6,695,228	\$6,183,984

ENDOWMENT INFORMATION

Is the Center/Institute supported in whole or in part by proceeds from an endowment? No

What is the amount of the endowment?

Where is the endowment managed?

Does the C/I spend only interest earnings?

Does the C/I spend part of the capital of the endowment?

CONTRACT AND GRANT INFORMATION

	2006–2007	2009–2010	2010–2011
Number of proposals submitted	N/A	31	54
Number of proposals funded	N/A	18	64
Proposals Made Jointly with Individuals not Directly associated with the Center / Institute	N/A	0	23*
Total amount of awards	N/A	\$4,545,218	\$13,372,298

*Some proposals submitted FY 09-10 received funding in 2011.

Were any of the contracts or grants multi-year? Yes

How many years does the Center or Institute have left on any current contract or grant (past 2010-2011)? 3 years on a large number of grants

Have any contracts or grants been renewed in the period from 2006-2007 to 2010-2011 and, if so, how many? Yes, 8

OTHER CENTER OR INSTITUTE ACTIVITIES

Has the Center/Institute generated any patents or royalties?

2, no royalties

- Use of Distributed Supersonic Microjets for Flow Control (with C. Shih & A Krothapalli) – Patent number 6,837,456
- Cavity Flow Control via Supersonic Microjets (with C. Shih & A Krothapalli) – Patent number 7,213,788

Has the Center or Institute applied for a patent that has not yet been granted? If so, please describe.

- Dynamic Lances Utilizing Fluidic Techniques - Filed November 2009 (by AirLiquide Inc.; F. Alvi a co-inventor along with Air Liquide personnel)
- Dynamic Control Of Lances Utilizing Counterflow Fluidic Techniques - Filed November 2009 (by AirLiquide Inc.; F. Alvi a co-inventor along with Air Liquide personnel)
- High Frequency Pulsed Microjet Actuation ,(with Oates & Clarke) - utility patent filed in March 2011.
- Microjet Control for Flow & Noise Reduction in Automotive Applications – provisional patent application filed, Feb. 2010, conversion to utility patent filed March 2011.
- High Bandwidth & Control Authority Micro-Actuators for Active Flow & Noise Control (with R. Kumar & J. Solomon) – provisional patent application filed, May 2009, conversion to utility patent filed May 2010
- Active-Adaptive Shock Shaping using Microjet Actuators for Noise and Flow Control – provisional patent application filed, May 2008; conversion to utility patent filed May 2009
- Flow Separation and Distortion Control using Microjets – Patent application pending; provisional patent in effect.

Comments or additional information.

EMPLOYMENT (2006–2007 THROUGH 2010–2011)

UNIVERSITY POSITIONS ASSOCIATED WITH THE C/I:

	2006–2007	2009–2010	2010–2011
Number of Faculty (FTE)	N/A	5.43	13.36
Number of A&P and USPS positions (FTE)	N/A	4.31	2.87
Total Positions	N/A	9.74	16.23

STUDENT EMPLOYMENT (INCLUDE GRADUATE AND UNDERGRADUATE):

	2006–2007	2009–2010	2010–2011
Number of research assistants employed (FTE)	N/A	63	34
Number of teaching assistants employed (FTE)	N/A	3-5*	3-5*
Number of interns (with stipend or OPS)	N/A	0	0
Number of interns (Volunteers)	N/A	0	0
Total student positions	N/A	66-68	37-39

*Teaching assistant number is minimal, and availability varies. The teaching assistants come primarily from the Mechanical Engineering department.

OTHER STUDENT FINANCIAL BENEFITS (INCLUDING GRADUATE AND UNDERGRADUATE):

	2006–2007 Number/Amount	2009–2010 Number/Amount	2010–2011 Number/Amount
Out of state tuition waivers	N/A/N/A	6/\$32,472	4/\$21,648
Student fellowships	N/A/N/A	3-5/*	3-5/*
Scholarships	N/A/N/A	0/0	0/0
Post-doctoral support	N/A/N/A	4-6/\$200,000- \$300,000	4-6/\$200,000- \$300,000
Amt of student travel support	N/A/N/A	0/0	0/0
Amt of registration for student conference attendance	N/A/N/A	0/0	0/0
Other support (specify)	N/A/N/A	0/0	0/0

Comments or additional information

The tuition waiver numbers are based on Florida State University, primarily in the Mechanical Engineering department.

RESEARCH AND EXTENSION

(2006–2007 THROUGH 2010–2011)

*Note: web-delivered and CD-Rom publications are counted in these totals.***PUBLICATIONS IN REFEREED JOURNALS***Note: Do not include those credited to a faculty member's primary academic department that are unrelated to the C/I mission.*

	2006–2007	2009–2010	2010–2011
Number of faculty publications	N/A	42*	53*
Number of student publications	N/A	42*	53*
Number of publications authored jointly with other faculty at FSU	N/A	42*	53*
Number of publications authored jointly with students in the C/I	N/A	42*	53*
Number of publications authored jointly with faculty at locations other than FSU	N/A	15-20%**	15-20%**

*Almost all publications are co-authored by students and faculty.

**Exact number not available

*Please have a list of relevant publications available if requested.***OTHER PUBLICATIONS AND CONFERENCE PAPERS**

	2006–2007	2009–2010	2010–2011
Number of extension or outreach publications	N/A	0	0
Number of national conference papers submitted	N/A	*	*
Number of national conference papers accepted	N/A	~60-70	~100-110
DATE, CONFERENCE AND NAME OF PRESENTATION(S)	N/A	**	**
Number of regional conference papers submitted	N/A	0	0
Number of regional conference papers accepted	N/A	0	0
DATE, CONFERENCE AND NAME OF PRESENTATION(S)	N/A	N/A	N/A

*Not tracked

**AIAA Fluid Dynamics, AIAA Aerospace Sciences, APS-DFD, AIAA Aeroacoustics, AIAA Flow Control, ASME-IGTI, IUTAM, ASME Fluids and more

ANNUAL REPORT

Does the Center or Institute
produce an annual report? If so,
please have copies available or
provide the web link.

No

STUDENT PUBLICATIONS

	2006–2007	2009–2010	2010–2011
Number of student theses credited to or associated with the C/I	N/A	8-10	12-15
Number of dissertations	N/A	8-10	12-15
Number of any other student papers *Honor Thesis	N/A	Not tracked	Not tracked

PROFESSIONAL DEVELOPMENT AND ASSISTANCE**Consulting**

	2006–2007	2009–2010	2010–2011
Number of consulting contracts	N/A	Not tracked	Not tracked
Name of consulting recipient(s)	N/A	Not tracked	Not tracked
Consulting Subject or Topic	N/A	Not tracked	Not tracked
Amount of funding provided through general funding of the C/I	N/A	Not tracked	Not tracked
Amount of funding obtained through contract in addition to general C/I funds	N/A	Not tracked	Not tracked

Technical Assistance

	2006–2007	2009–2010	2010–2011
Number of technical assistance sessions or seminars offered	N/A	0	0
Name of technical assistance recipient(s)	N/A	N/A	N/A
Technical Assistance Subject or Topic	N/A	N/A	N/A
Amount of Funding	N/A	N/A	N/A

CONFERENCES OR SYMPOSIA

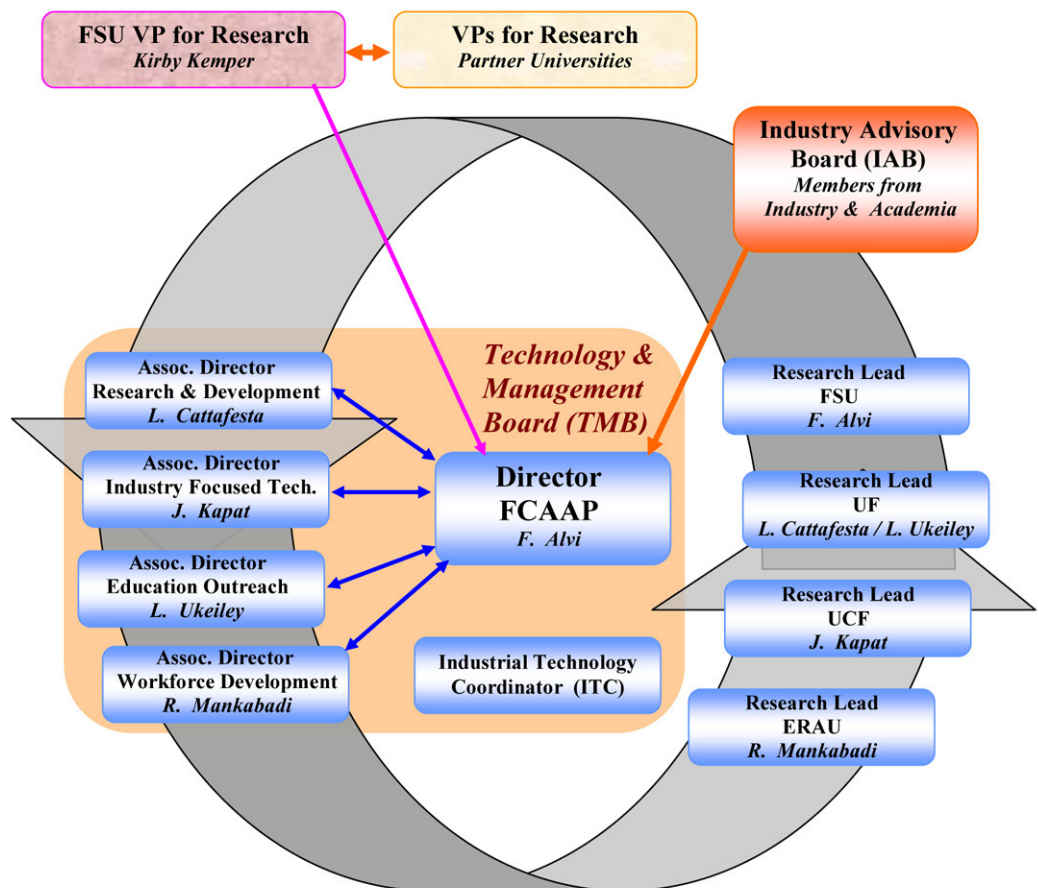
How many conferences or symposia has the Center or Institute sponsored or hosted from 2006-2007 through 2010-2011?
Please list.

FCAAP has hosted three annual symposiums for the Center and co-hosted three Program reviews/technical meetings (FAA & NSF)

Comments or additional information

MANAGEMENT

Center/Institute organizational chart



Is the Center or Institute legislatively created?

Yes

<i>Does the Center/Institute have an advisory board?</i>	Yes
<i>How often are meetings held?</i>	1 to 2 per year
<i>Does the board manage the C/I or does it serve in an advisory capacity?</i>	Advisory
<i>Please describe and include a list of current members</i>	NASA Kennedy Space Center, NASA Glenn Research Center, Lockheed Martin, Seimens, Air Force Research Laboratory and Boeing (board is being re-formulated)
<i>How long has the Center/Institute director served?</i>	Since Center inception
<i>How does the Center/Institute directorship change?</i>	Directorship remains unchanged
<i>Are there other issues associated with management transition?</i>	N/A
<i>If there are multiple sites, how are they administered? Who has the final oversight?</i>	See organization chart
<i>Comments or additional information</i>	

ADDITIONAL ISSUES

Issues facing the Center or Institute

OVERALL EVALUATION

- ✓ The Florida Center for Advanced Aero-Propulsion (FCAAP) is performing activities consistent with its mission to provide technical and educational assistance for Florida and the nation in aerospace, aviation and related areas. This is evidenced through its work with other Florida universities along with its association with major national governmental entities as well as private industry leaders. It has received or applied for 9 patents and its members present extensively at national conferences.
- ✓ There is no E&G funding; a return on investment is not applicable.
- ✓ The FCAAP provides assistance to a wide variety of partners and identifies FSU as an important resource in the field of aero-propulsion. It employs a large number of faculty and professional persons (over 16 FTE) and employs 37-39 research and graduate assistants in furtherance of its mission. FCAAP also provides support for 4-6 post-doctoral positions. It provides significant opportunities for students to perform research jointly with faculty members. Finally, it has hosted three technical meetings connected with the Federal Aeronautical Administration and the National Science Foundation. Its efforts should continue.
- ✓ There is no need to change their mission or organizational structure. It is functional to involve its various partners and advisory board.
- ✓ The Center is funded primarily through federal sources, with significant additional funding from state and private sources. Other than retaining this grant support, the Center has no pressing budget issues.
- ✓ No change in classification is needed.
- ✓ Retain active status.

ENERGY AND SUSTAINABILITY CENTER

Bldg. 114
Florida State University

Phone: (850) 644-5885
Director: Dr. Anjaneyulu Krothapalli
akrothapalli@fsu.edu
(850) 644-5885
Budget and funding contact: Jon Cloos
cloos@fsu.edu
(850) 410-6333
Web site: esc.fsu.edu

*If multidisciplinary, please list
departments associated with C/I*

MISSION AND ACTIVITIES

*What is the Center's or Institute's
mission statement?*

The Energy and Sustainability Center (formerly Sustainable Energy Science and Engineering Center) addresses challenging alternative energy issues through innovative solutions for consumers and industry. The need for energy systems that have lower emissions of CO₂ and other greenhouse materials is of paramount importance.

Briefly, what activities are consistently performed that move the Center/Institute toward meeting its established mission?

- Development of Off Grid Zero Emission Building technologies
- Development of biofuels using variety of biomass feedstocks
- Affordable concentrating solar technologies for medium temperature heat generation
- Multi-generation Distributed power systems for rural development
- Development of Air gap membrane distillation technology for water purification

What is the Center or Institute best known for?

Off Grid Zero Emission Building

What is the greatest strength of the Center or Institute?

Research focused on technologies that have immediate relevance for commercialization.

What are the most significant challenges facing the Center or Institute?

Minimal Institutional funding

FUNDING (2006–2007 THROUGH 2010–2011)

What is the source and amount of expenditures from 2006-2007 to 2010-2011 for the Center/Institute using the following categories?

Expenditures	2006–2007	2009–2010	2010–2011
University (E&G)	\$50,000	0	\$25,000
State (General Revenue Other than E&G)	0	0	0
State (C&G)	0	\$100,000	\$90,000
Federal	0	\$50,000	\$150,000
Local	0	0	0
Private / nonprofit organization	0	0	0
Endowment proceeds	0	\$75,000	\$50,000
Proceeds from patents or royalties	0	0	0
Sales from services or products	0	0	0
Others (Specify)	0	0	0
Total expenditures	\$50,000	\$225,000	\$315,000

ENDOWMENT INFORMATION

<i>Is the Center/Institute supported in whole or in part by proceeds from an endowment?</i>	Yes
<i>What is the amount of the endowment?</i>	\$1,000,000 Fuqua Chair endowment used in part to fund Center activities
<i>Where is the endowment managed?</i>	FSU Foundation
<i>Does the C/I spend only interest earnings?</i>	Yes
<i>Does the C/I spend part of the capital of the endowment?</i>	No

CONTRACT AND GRANT INFORMATION

	2006–2007	2009–2010	2010–2011
Number of proposals submitted	0	2	1
Number of proposals funded	0	1	1
Proposals Made Jointly with Individuals not Directly associated with the Center / Institute	0	0	0
Total amount of awards	N/A	\$50,000	\$150,000

<i>Were any of the contracts or grants multi-year?</i>	2
<i>How many years does the Center or Institute have left on any current contract or grant (past 2010-2011)?</i>	1 year
<i>Have any contracts or grants been renewed in the period from 2006-2007 to 2010-2011 and, if so, how many?</i>	1

OTHER CENTER OR INSTITUTE ACTIVITIES

Has the Center/Institute generated any patents or royalties?

No

Has the Center or Institute applied for a patent that has not yet been granted? If so, please describe.

No

Comments or additional information.

EMPLOYMENT

(2006–2007 THROUGH 2010–2011)

UNIVERSITY POSITIONS ASSOCIATED WITH THE C/I:

	2006–2007	2009–2010	2010–2011
Number of Faculty (FTE)	0	0	0
Number of A&P and USPS positions (FTE)	0	0	0
Total Positions	0	0	0

STUDENT EMPLOYMENT (INCLUDE GRADUATE AND UNDERGRADUATE):

	2006–2007	2009–2010	2010–2011
Number of research assistants employed (FTE)	0	6	4
Number of teaching assistants employed (FTE)	0	1	1
Number of interns (with stipend or OPS)	0	1	0
Number of interns (Volunteers)	0	0	0
Total student positions	0	8	5

**OTHER STUDENT FINANCIAL BENEFITS
(INCLUDING GRADUATE AND UNDERGRADUATE):**

	2006–2007	2009–2010	2010–2011
	Number/Amount	Number/Amount	Number/Amount
Out of state tuition waivers	0/0	6/\$5,492	4/\$3,626
Student fellowships	0/0	0/0	0/0
Scholarships	0/0	0/0	0/0
Post-doctoral support	0/0	0/0	0/0
Amt of student travel support	0/0	0/0	0/0
Amt of registration for student conference attendance	0/0	0/0	0/0
Other support (specify)	0/0	0/0	0/0

Comments or additional information

**RESEARCH AND EXTENSION
(2006–2007 THROUGH 2010–2011)**

Note: web-delivered and CD-Rom publications are counted in these totals.

PUBLICATIONS IN REFEREED JOURNALS

Note: Do not include those credited to a faculty member's primary academic department that are unrelated to the C/I mission.

	2006–2007	2009–2010	2010–2011
Number of faculty publications	5	2	3
Number of student publications	0	0	0
Number of publications authored jointly with other faculty at FSU	0	0	0
Number of publications authored jointly with students in the C/I	0	0	0
Number of publications authored jointly with faculty at locations other than FSU	5	2	32

Please have a list of relevant publications available if requested.

OTHER PUBLICATIONS AND CONFERENCE PAPERS

	2006–2007	2009–2010	2010–2011
Number of extension or outreach publications	0	0	0
Number of national conference papers submitted	2	4	1
Number of national conference papers accepted	0	0	0
DATE, CONFERENCE AND NAME OF PRESENTATION(S)	N/A	N/A	N/A
Number of regional conference papers submitted	0	0	0
Number of regional conference papers accepted	0	0	0
DATE, CONFERENCE AND NAME OF PRESENTATION(S)	N/A	N/A	N/A

ANNUAL REPORT

Does the Center or Institute produce an annual report? If so, please have copies available or provide the web link.

No

STUDENT PUBLICATIONS

	2006–2007	2009–2010	2010–2011
Number of student theses credited to or associated with the C/I	1	1	3
Number of dissertations	0	0	0
Number of any other student papers	0	0	0
*Honor Thesis			

PROFESSIONAL DEVELOPMENT AND ASSISTANCE

Consulting

	2006–2007	2009–2010	2010–2011
Number of consulting contracts	0	0	0
Name of consulting recipient(s)	0	0	0
Consulting Subject or Topic	N/A	N/A	N/A
Amount of funding provided through general funding of the C/I	0	0	0
Amount of funding obtained through contract in addition to general C/I funds	0	0	0

Technical Assistance

	2006–2007	2009–2010	2010–2011
Number of technical assistance sessions or seminars offered	0	0	0
Name of technical assistance recipient(s)	N/A	N/A	N/A
Technical Assistance Subject or Topic	N/A	N/A	N/A
Amount of Funding	0	0	0

CONFERENCES OR SYMPOSIA

How many conferences or symposia has the Center or Institute sponsored or hosted from 2006-2007 through 2010-2011? Please list.

0

Comments or additional information

MANAGEMENT

Center/Institute organizational chart

Dr. Anjaneyulu Krothapalli serves as Center Director and Dr. Juan Ordonez serves as Associate Director. The Director reports to the Office of the VP for Research. There are currently 3 Graduate Research Assistants working on ESC projects.

Is the Center or Institute legislatively created?

No

Does the Center/Institute have an advisory board?

No

How often are meetings held?

Does the board manage the C/I or does it serve in an advisory capacity?

Please describe and include a list of current members

How long has the Center/Institute director served?

Since inception

How does the Center/Institute directorship change?

No formal process has been established other than the usual university process.

Are there other issues associated with management transition?

No

If there are multiple sites, how are they administered? Who has the final oversight?

Comments or additional information

ADDITIONAL ISSUES

Issues facing the Center or Institute

OVERALL EVALUATION

- ✓ The Center's activities are consistent with its mission. It has developed strategies to address alternative energy issues. Examples include the Off Grid Zero Emission Building technologies and the development of biofuels.
- ✓ The Center's return on investment is 1:9.6. This does not include endowment proceeds.
- ✓ The Energy & Sustainability Center provides an important service to the university community and to the public and is recommended for continuation. It provides an opportunity for employment of research assistants, faculty publications (most are authored jointly with colleagues from institutions other than FSU) and student theses. Its products offer an opportunity for commercialization and access by a wider audience.
- ✓ Other than the need to continue pursuit of grant funding, no budget issues are present.
- ✓ No change in classification is needed.
- ✓ Retain active status.

CENTER ON BETTER HEALTH AND LIFE FOR UNDERSERVED POPULATIONS

2010 Levy Avenue
Building B
Suite 288

Phone: (850) 645-8110
Director: Penny A. Ralston, Ph.D.
pralston@fsu.edu
(850) 645-8110
Budget and funding contact: B Koehler
bkoehler@fsu.edu
(850) 644-4236
Web site: www.bhlcenter.fsu.edu

*If multidisciplinary, please list
departments associated with C/I*

MISSION AND ACTIVITIES

*What is the Center's or Institute's
mission statement?*

The mission of the Center is to improve health of underserved populations through developing and testing community-based interventions.

*Briefly, what activities are
consistently performed that move
the Center/Institute toward meeting
its established mission?*

- Develop, implement and evaluate community-based programs to address health disparities of vulnerable populations;
- Conduct research on health disparities and vulnerable populations to inform the program development process; and
- Develop, implement and evaluate mentoring programs to increase the number of qualified students for the health professions.

What is the Center or Institute best known for?

The Center has been recognized by the National Institutes of Health through a \$1.75M research award (R24 MD002807) received in 2008, is an official partner of the Office of Minority Health, Florida Department of Health and, through its work with the Florida Alliance for Health Professions Diversity, is affiliated with the Sullivan Alliance which was established by the Honorable Louis Sullivan, MD, former Secretary of the U.S. Department of Health and Human Services as a result of the 2004 report, Missing Persons: Minorities in the Health Professions.

What is the greatest strength of the Center or Institute?

We conduct studies using community-based participatory research approaches. This approach requires strong relationships with and trust from the community.

What are the most significant challenges facing the Center or Institute?

Funding is always a challenge.

FUNDING (2006–2007 THROUGH 2010–2011)

What is the source and amount of expenditures from 2006-2007 to 2010-2011 for the Center/Institute using the following categories?

Expenditures	2006–2007	2009–2010	2010–2011
University (E&G)	0	0	0
State (General Revenue Other than E&G)	0	0	0
State (C&G)	0	\$18,111	\$7,124
Federal	\$8,371	\$354,658	\$415,102
Local	0	0	0
Private / nonprofit organization	\$32,786	\$32,738	\$38,741
Endowment proceeds	0	0	0
Proceeds from patents or royalties	0	0	0
Sales from services or products	0	0	0
Others (SRAD-FSU Internal)	\$5,661	\$7,111	\$13,660
Total expenditures	\$46,818	\$412,618	\$474,627

ENDOWMENT INFORMATION

Is the Center/Institute supported in whole or in part by proceeds from an endowment? No

What is the amount of the endowment?

Where is the endowment managed?

Does the C/I spend only interest earnings?

Does the C/I spend part of the capital of the endowment?

CONTRACT AND GRANT INFORMATION

	2006–2007	2009–2010	2010–2011
Number of proposals submitted	7	5	6
Number of proposals funded	1	3	5
Proposals Made Jointly with Individuals not Directly associated with the Center / Institute	0	1	1
Total amount of awards	\$32,001	\$388,300	\$409,506

Were any of the contracts or grants multi-year?

Yes. Ralston, P., Ilich-Ernst, J., Wickrama, K.A.S., & Harris, C. “Reducing Cardiovascular Risk in African Americans.” National Institute on Minority Health and Health Disparities. \$1,758,305. 2008-2013. (Award R24 MD002807)

How many years does the Center or Institute have left on any current contract or grant (past 2010-2011)?

3 ending in 2013

Have any contracts or grants been renewed in the period from 2006-2007 to 2010-2011 and, if so, how many?

Yes, the NIH grant has been renewed annually since 2008.

OTHER CENTER OR INSTITUTE ACTIVITIES

Has the Center/Institute generated any patents or royalties? No

Has the Center or Institute applied for a patent that has not yet been granted? If so, please describe. No

Comments or additional information.

EMPLOYMENT

(2006–2007 THROUGH 2010–2011)

UNIVERSITY POSITIONS ASSOCIATED WITH THE C/I:

	2006–2007	2009–2010	2010–2011
Number of Faculty (FTE)	1.0	1.0	1.0
Number of A&P and USPS positions (FTE)	1.0	1.0	1.0
Total Positions	2.0	2.0	2.0

STUDENT EMPLOYMENT (INCLUDE GRADUATE AND UNDERGRADUATE):

	2006–2007	2009–2010	2010–2011
Number of research assistants employed (FTE)	0	2	.5
Number of teaching assistants employed (FTE)	0	0	0
Number of interns (with stipend or OPS)	0	0	1
Number of interns (Volunteers)	0	5 (FSU)	3 (FSU) 1 (FAMU)
Total student positions	0	7	5.5

**OTHER STUDENT FINANCIAL BENEFITS
(INCLUDING GRADUATE AND UNDERGRADUATE):**

	2006–2007	2009–2010	2010–2011
	Number/Amount	Number/Amount	Number/Amount
Out of state tuition waivers	0/0	0/0	0/0
Student fellowships	0/0	0/0	0/0
Scholarships	2/\$5,000	0/0	0/0
Post-doctoral support	0/0	0/0	1/\$41,000
Amt of student travel support	0/0	5/\$642	6/\$1,536
Amt of registration for student conference attendance	0/0	2/\$198	1/\$206
Other support (specify)	0/0	0/0	0/0

Comments or additional information

**RESEARCH AND EXTENSION
(2006–2007 THROUGH 2010–2011)**

Note: web-delivered and CD-Rom publications are counted in these totals.

PUBLICATIONS IN REFEREED JOURNALS

Note: Do not include those credited to a faculty member's primary academic department that are unrelated to the C/I mission.

	2006–2007	2009–2010	2010–2011
Number of faculty publications	1	2	3
Number of student publications	0	0	3
Number of publications authored jointly with other faculty at FSU	0	1	1
Number of publications authored jointly with students in the C/I	0	1	1
Number of publications authored jointly with faculty at locations other than FSU	1	1	3

Please have a list of relevant publications available if requested.

OTHER PUBLICATIONS AND CONFERENCE PAPERS

	2006–2007	2009–2010	2010–2011
Number of extension or outreach publications	0	0	0
Number of national conference papers submitted	0	7	7
Number of national conference papers accepted	0	7	7
DATE, CONFERENCE AND NAME OF PRESENTATION(S)	N/A	*	*
Number of regional conference papers submitted	0	0	0
Number of regional conference papers accepted	0	0	0
DATE, CONFERENCE AND NAME OF PRESENTATION(S)	N/A	N/A	N/A

*Not tracked

*Available upon request

ANNUAL REPORT

Does the Center or Institute
produce an annual report? If so,
please have copies available or
provide the web link.

No

STUDENT PUBLICATIONS

	2006–2007	2009–2010	2010–2011
Number of student theses credited to or associated with the C/I	0	0	0
Number of dissertations	0	0	1
Number of any other student papers	0	2	3

PROFESSIONAL DEVELOPMENT AND ASSISTANCE

Consulting

	2006–2007	2009–2010	2010–2011
Number of consulting contracts	1	1	1
Name of consulting recipient(s)	*	**	***
Consulting Subject or Topic	Strategic Plan	Prog. Review	Speech
Amount of funding provided through general funds of the C/I	0	0	0
Amount of funding obtained through contract in addition to general C/I funds	\$32,001	\$1,000	\$1,000

*Prairie View A&M University

**University of Wyoming

***Black Coalition in Family & Consumer Sciences

Technical Assistance

	2006–2007	2009–2010	2010–2011
Number of technical assistance sessions or seminars offered	0	0	0
Name of technical assistance recipient(s)	N/A	N/A	N/A
Technical Assistance Subject or Topic	N/A	N/A	N/A
Amount of Funding	N/A	N/A	N/A

CONFERENCES OR SYMPOSIA

How many conferences or symposia has the Center or Institute sponsored or hosted from 2006-2007 through 2010-2011? Please list.

Reducing Cardiovascular Risk Dissemination Symposium, October 5-6, 2012, Florida State University.

Comments or additional
information

Served on Federal grant review panels

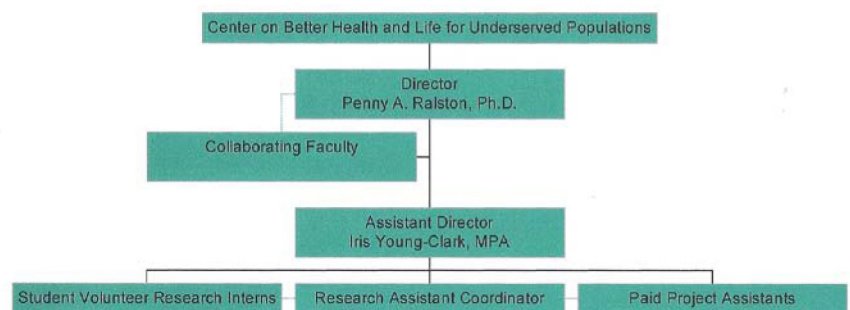
Federal Panel Reviews

- U.S. Department of Agriculture (Capacity Grants, Higher Education Programs), 2006
- U.S. Department of Agriculture (Capacity Grants, Higher Education Programs), 2007
- U.S. Department of Health & Human Services, Centers for Disease Control and
- Prevention, Special Emphasis Panel/Scientific Review Group (Health Promotion and
- Disease Prevention Research Centers), 2009.
- National Center on Minority Health & Health Disparities, National Institutes of Health (Community-based Participatory Research), 2009.
- U.S. Department of Agriculture (Multicultural Scholars Program), 2010.
- National Center on Minority Health & Health Disparities, National Institutes of Health
- (Comparative Effectiveness Research), 2010.

MANAGEMENT

Center/Institute organizational
chart

Center on Better Health and Life for Underserved Populations



Is the Center or Institute
legislatively created?

No

<i>Does the Center/Institute have an advisory board?</i>	No. We develop separate advisory group for each project.
<i>How often are meetings held?</i>	
<i>Does the board manage the C/I or does it serve in an advisory capacity?</i>	
<i>Please describe and include a list of current members</i>	
<i>How long has the Center/Institute director served?</i>	6 years
<i>How does the Center/Institute directorship change?</i>	No
<i>Are there other issues associated with management transition?</i>	No
<i>If there are multiple sites, how are they administered? Who has the final oversight?</i>	N/A
<i>Comments or additional information</i>	

ADDITIONAL ISSUES

<i>Issues facing the Center or Institute</i>	None
--	------

OVERALL EVALUATION

- ✓ The Center on Better Health and Life for Underserved Populations meets its goals through community partnerships, research, presentations at national conferences and an ongoing relationship with state and federal government entities. The Center works in collaboration with the College of Human Sciences.
- ✓ The current return on investment of E&G is not applicable. No E&G funds are included in the Center's funding.
- ✓ Continuation of the Center is recommended. It provides a valuable resource for research, community outreach, faculty and research assistant employment and through publication in peer-reviewed journals. It also facilitates completion of student papers.
- ✓ There is no need for a change in mission or organizational structure.
- ✓ The Center's funding is primarily from federal sources and a smaller amount through community-based organizations. There is no need to adjust its funding.
- ✓ No change in classification is needed.
- ✓ Retain active status.

INSTITUTE OF SCIENCE AND PUBLIC AFFAIRS

Suite 2200, Building C
University Center
Tallahassee, FL 32306-2641

Phone: (850) 644-2007
Director: Dr. Robert B. Bradley
rbradley@fsu.edu
(850) 644-0797
Budget and funding contact: Katie Brock
kbrock@fsu.edu
(850) 644-4564
Web site: <http://www.ispa.fsu.edu>

*If multidisciplinary, please list
departments associated with the
C/I?*

The Institute is administratively responsible for a number of centers and institutes. These are listed below; however, for more detailed information please see individual center/institute reviews.

- Beaches and Shores Resource Center (BSRC)
- Center for Advancement of Learning and Assessment (CALA)
- Center for the Advancement of Human Rights (CAHR)
- Center for Biomedical and Toxicological Research/
Institute for International Cooperative Environmental
Research (CBTR/IICER)
- Center for Economic Forecasting and Analysis (CEFA)
- Center for Higher Education Research, Teaching and In-
novation (CHERTI)
- Center for Information Management & Educational
Services (CIMES)
- Center for Prevention and Early Intervention Policy
(CPEIP)
- Center on Better Health and Life for Underserved Popu-
lations (BHLC)
- Florida Center for Prevention Research (FCPR)
- Florida Conflict Resolution Consortium (FCRC)
- Florida Resources and Environmental Analysis Center
(FREAC)
- Florida State Climate Center (FSCC)
- Institute for Academic Leadership (IAL)
- The John Scott Dailey Institute of Government (IOG)

MISSION AND ACTIVITIES

What is the Center's or Institute's mission statement?

The overriding mission of the Institute of Science and Public Affairs is to apply university resources to the solution of critical public problems. ISPA provides administrative and support services for specialized centers. These centers were established to respond to public and private needs through programs in education, training, and applied research. The centers provide practical experience and training for students in problem-solving environments under the supervision of experienced faculty and staff.

This evaluation covers the activities of the ISPA administration and support services. The specialized centers are reported separately.

Briefly, what activities are consistently performed that move the Center/Institute toward meeting its established mission?

- a. Process proposals for project funding with federal, state, local, public and private entities. For this reporting period 544 proposals for ISPA and its associated Centers were submitted, resulting in 650 awards in excess of \$70 million. (The number of awards includes proposals prepared in previous years.)
- b. Process/approve applicable paperwork and support documentation for personnel actions including offers of employment, reappointments, reclassifications, pay increases, promotions, and/or terminations. ISPA and its component centers and institutes currently employ 190 people.
- c. Provide oversight and maintenance of fiscal records and budget control for (12) E&G, (7) Auxiliary, (174) Sponsored Research, (4) FSU Foundation and (19) Research Foundation budgets applicable to this reporting period.
- d. Generate cash flow analyses, balance sheets, income statements, and budget reports.
- e. Provide support in the areas of accounts payable and receivable, purchasing, travel, and/or student financial services.
- f. Provide support in the interpretation, development, implementation of policies and procedures as they apply to administrative and fiscal functions, and monitor compliance with these policies and procedures.
- g. Provide support to the Board of Governors through initiatives including Florida ExpertNet/Clearinghouse for Applied Research and Public Service, Centers/Institutes Online Reporting System (annual fiscal reporting), and Graduate Recruitment Identification System.

- h. Provide instructional resources to university departments including Public Administration, Geography, Economics, and Anthropology.
- i. Provide work opportunities for students in problem-solving environments.
- j. Serve on University Committees including the Council on Research and Creativity and the Vice President for Research's Steering Committee as well as various student educational supervision (MS/Ph.D) committees.

What is the Center or Institute best known for?

ISPA is best known for public service, which includes coordinating the effective and efficient response to public and private needs through programs in education, training, and applied research by its component Institutes and/or Centers. In addition, ISPA provides fiscal and administrative support for Institutes and Centers.

What is the greatest strength of the Center or Institute?

ISPA has several key strengths. The Institute, through its Centers, offers an extensive set of services through specialists in fields such as biology, chemistry, geography, land use planning, public administration, physics, economics, and law. These services include, but are not limited to, Cartography, Clearinghouse Design and Operation, Consensus Building and Facilitation, Ecological Surveys, Economic Impact Studies, Flood and Shoreline Erosion Studies, GIS Development and Technical Assistance, Public Records Management, Test Assessment and Evaluation, Teacher Training and Workshops, Toxicology Analysis and Investigation, and Website Design and Development. In addition, ISPA maintains a broad array of data resources available for public use. Students are provided the opportunity to work on specific projects under the supervision of experienced faculty and staff in problem-solving environments. Government agencies and private sector organizations also benefit from this dynamic source of trained and skilled personnel.

What are the most significant challenges facing the Center or Institute?

The most significant challenges are related to a variety of accountability mandates and funding changes involving constrictions of contract and grant opportunities. The number of reporting mandates have increased dramatically in the last few years, both at the federal and state levels. ISPA's operational expenses are funded by an allocation provided through FSU's annual budget as well as revenues generated through services provided to reporting centers and institutes. The allocation continues to decrease due to budget cuts. These budget cuts have also negatively affected agencies and clientele that fund projects through our centers and institutes, which in turn has caused a decrease in revenues generated through services provided to those centers and institutes.

FUNDING

(2006–2007 THROUGH 2010–2011)

What is the source and amount of expenditures from 2006-2007 to 2010-2011 for the Center/Institute using the following categories?

Expenditures	2006–2007	2009–2010	2010–2011
University (E&G)	\$973,995	\$848,321	\$866,254
State (General Revenue Other than E&G)	0	0	0
State (C&G)	N/A	N/A	N/A
Federal	\$145,326	\$112,075	\$0
Local	\$112,043	0	0
Private / nonprofit organization	\$12,418	\$19,288	0
Endowment proceeds	\$67,856	\$48,744	\$86,787
Proceeds from patents or royalties	0	0	0
Sales from services or products	\$443,230	\$284,468	\$297,725
Others (specify)	0	0	0
Total expenditures	\$1,754,868	\$1,312,896	\$1,250,766

ENDOWMENT INFORMATION

Is the Center/Institute supported in whole or in part by proceeds from an endowment?

Yes

What is the amount of the endowment?

\$1,438,061 as of 1/31/2012

Where is the endowment managed?

FSU Foundation

Does the C/I spend only interest earnings?

No

Does the C/I spend part of the capital of the endowment?

Yes

CONTRACT AND GRANT INFORMATION

	2006–2007	2009–2010	2010–2011
Number of proposals submitted	1	0	1
Number of proposals funded	17*	7*	9*
Proposals Made Jointly with Individuals not Directly associated with the Center / Institute	1	0	0
Total amount of awards	\$245,363*	\$185,497*	\$124,117*

*NOTE: Proposals submitted during a fiscal year are not necessarily funded in the same fiscal year or are awards and/or transfers from an existing award. Therefore, the number of proposals funded and total amount of awards includes data on all proposal funding received for this period of time.

Were any of the contracts or grants multi-year?

Yes

How many years does the Center or Institute have left on any current contract or grant (past 2010-2011)?

5 years on one, 2 on one

Have any contracts or grants been renewed in the period from 2006-2007 to 2010-2011 and, if so, how many?

Yes, three

OTHER CENTER OR INSTITUTE ACTIVITIES

Has the Center/Institute generated any patents or royalties?

No

Has the Center or Institute applied for a patent that has not yet been granted? If so, please describe.

No

Comments or additional information.

EMPLOYMENT

(2006–2007 THROUGH 2010–2011)

UNIVERSITY POSITIONS ASSOCIATED WITH THE C/I:

	2006–2007	2009–2010	2010–2011
Number of Faculty (FTE)	6.25	2.36	4
Number of A&P and USPS positions (FTE)	8.56	7.28	7.66
Total Positions	14.81	9.64	11.66

STUDENT EMPLOYMENT (INCLUDE GRADUATE AND UNDERGRADUATE):

	2006–2007	2009–2010	2010–2011
Number of research assistants employed (FTE)	.47	.25	.57
Number of teaching assistants employed (FTE)	N/A	N/A	N/A
Number of interns (with stipend or OPS)	N/A	N/A	N/A
Number of interns (without pay)	N/A	N/A	N/A
Total student positions	.47	.25	.57

OTHER STUDENT FINANCIAL BENEFITS (INCLUDING GRADUATE AND UNDERGRADUATE):

	2006–2007 Number/Amount	2009–2010 Number/Amount	2010–2011 Number/Amount
Out of state tuition waivers	N/A/N/A	N/A/N/A	N/A/N/A
Student fellowships	N/A/N/A	N/A/N/A	N/A/N/A
Scholarships	N/A/N/A	N/A/N/A	N/A/N/A
Post-doctoral support	N/A/N/A	N/A/N/A	N/A/N/A
Amt of student travel support	2/\$788	4/\$1,594	13/\$3,624
Amt of registration for student conference attendance	1/\$68	1/\$20	1/\$90
Other support (specify)	N/A/N/A	N/A/N/A	N/A/N/A

Comments or additional information

RESEARCH AND EXTENSION

(2006–2007 THROUGH 2010–2011)

*Note: web-delivered and CD-Rom publications are counted in these totals.***PUBLICATIONS IN REFEREED JOURNALS***Note: Do not include those credited to a faculty member's primary academic department that are unrelated to the C/I mission.*

	2006–2007	2009–2010	2010–2011
Number of faculty publications	0	0	0
Number of student publications	0	0	0
Number of publications authored jointly with other faculty at FSU	0	0	0
Number of publications authored jointly with students in the C/I	0	0	0
Number of publications authored jointly with faculty at locations other than FSU	0	0	0

*Please have a list of relevant publications available if requested.***OTHER PUBLICATIONS AND CONFERENCE PAPERS**

	2006–2007	2009–2010	2010–2011
Number of extension or outreach publications	5	2	4
Number of national conference papers submitted	0	0	0
Number of national conference papers accepted	N/A	N/A	N/A
DATE, CONFERENCE AND NAME OF PRESENTATION(S)	N/A	N/A	N/A
Number of regional conference papers submitted	1	1	1
Number of regional conference papers accepted	1	1	1
DATE, CONFERENCE AND NAME OF PRESENTATION(S)	*	**	***

*October, 2006: Florida Council for the Social Studies 2006 Geography Awareness Week: Africa

**October, 2009: Florida Council for the Social Studies 2009 Geography Awareness Week: Mapping Europe

*** October, 2010: Florida Council for the Social Studies 2010 Geography Awareness Week: Florida's Fresh Water – Community, Controversy and Conservation

ANNUAL REPORT

Does the Center or Institute produce an annual report? If so, please have copies available or provide the web link.

No, however, the ISPA Brochure is available at <http://www.ispa.fsu.edu> and includes an overview of ISPA Centers/Institutes.

STUDENT PUBLICATIONS

	2006–2007	2009–2010	2010–2011
Number of student theses credited to or associated with the C/I	N/A	N/A	N/A
Number of dissertations	N/A	N/A	N/A
Number of any other student papers	N/A	N/A	N/A

PROFESSIONAL DEVELOPMENT AND ASSISTANCE

Consulting

	2006–2007	2009–2010	2010–2011
Number of consulting contracts	3	3	3
Name of consulting recipient(s)	*	*	*
Consulting Subject or Topic	**	**	**
Amount of funding provided through general funds of the C/I	\$57,728	\$59,460	\$59,460
Amount of funding obtained through contract in addition to general C/I funds	\$178,000	\$134,000	\$134,000

*DOE/Board of Governors

**Florida ExpertNet, Centers/Institutes Online Reporting System, Graduate Recruitment Identification System, Economic Impacts of the State University System of Florida.

Technical Assistance

	2006–2007	2009–2010	2010–2011
Number of technical assistance sessions or seminars offered	7 Numerous	8 Numerous	9 Numerous
Name of technical assistance recipient(s)	* **	* **	* **
Technical Assistance Subject or Topic	* **	* **	* **
Amount of Funding	0	0	0

*2006/2007 – 2009/2010 – 2010/2011:

*Various Florida County schools: Community Atlas GIS Workshops

*Monroe County schools: Ties That Bind/Key West Extension of the Flagler Railroad

*Monroe County/Franklin County: Website/Oral History Virtual Tour

*Duval County Schools: GIS in History

*Various Recipients: Kids Hunt for Health

*FSU Faculty: First Year Assistant Professors Grant Writing Workshop

*2006/2007: FSU Faculty/Staff/Students/Visitors: Online Campus Map

*2009/2010 – 2010/2011:

*FSU Mag Lab: Sci-Girls Summer Scientific Explorations

*State of Florida educational and administrative recipients: GIS Site License

*2010/2011: Various Recipients: Census Rapid Response

**Beaches and Shores Resource Center (BSRC)

**Center for Advancement of Learning and Assessment (CALA)

**Center for the Advancement of Human Rights (CAHR)

**Center for Biomedical and Toxicological Research/Institute for International Cooperative Environmental Research (CBTR/IICER)

**Center for Economic Forecasting and Analysis (CEFA)

**Center for Higher Education Research, Teaching and Innovation (CHERTI)

**Center for Information Management & Educational Services (CIMES)

**Center for Prevention and Early Intervention Policy (CPEIP)

**Center on Better Health and Life for Underserved Populations (BHLC)

**Florida Center for Prevention Research (FCPR)

**Florida Conflict Resolution Consortium (FCRC)

**Florida Resources and Environmental Analysis Center (FREAC)

**Florida State Climate Center (FSCC)

**Institute for Academic Leadership (IAL)

**The John Scott Dailey Institute of Government (IOG)

CONFERENCES OR SYMPOSIA

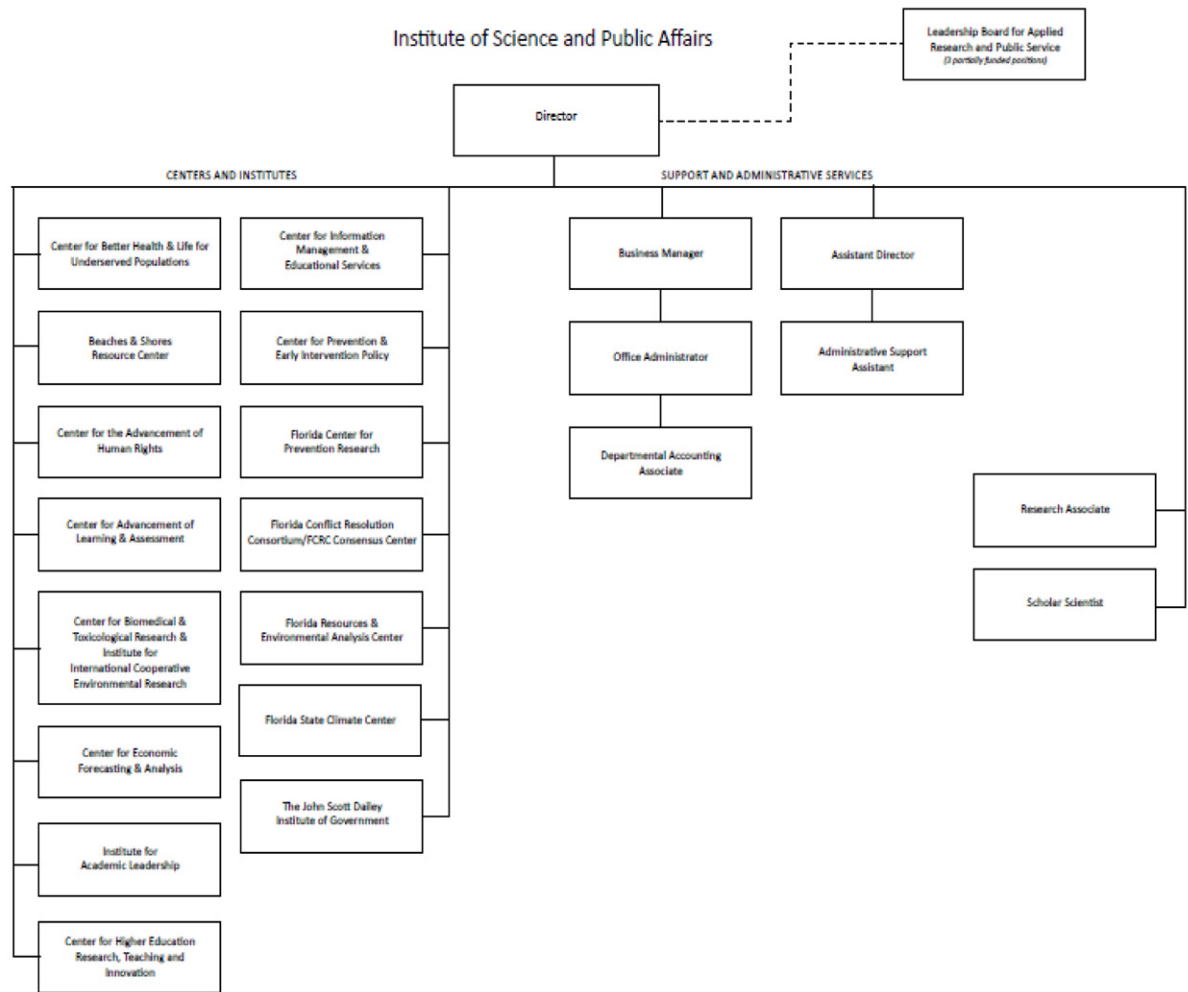
How many conferences or symposia has the Center or Institute sponsored or hosted from 2006-2007 through 2010-2011? Please list.

One, The Educational System of South Korea: National Treasure or National Headache?

Comments or additional information

MANAGEMENT

Center/Institute organizational chart



Is the Center or Institute legislatively created?

No, ISPA was not legislatively created, however, several of the reporting centers and/or Institutes were.

Does the Center/Institute have an advisory board?

How often are meetings held?

This varies with each applicable Center and/or Institute.

Does the board manage the C/I or does it serve in an advisory capacity?

All applicable advisory boards serve in an advisory capacity.

Please describe and include a list of current members.

See individual center/institute reviews.

<i>How long has the Center/Institute director served?</i>	14 years
<i>How does the Center/Institute directorship change?</i>	The directorship changes through FSU's standard hiring process, with the Institute director's immediate supervisor, currently Dr. Garnett S. Stokes, Provost and Vice President for Academic Affairs, making the hiring decision.
<i>Are there other issues associated with management transition?</i>	No
<i>If there are multiple sites, how are they administered? Who has the final oversight?</i>	
<i>Comments or additional information</i>	

ADDITIONAL ISSUES

Issues facing the Center or Institute

OVERALL EVALUATION

- ✓ The support and administrative functions for the Centers and Institutes contained within the Institute of Science and Public Affairs (ISPA) are performed well. It also coordinates resources among the Centers and Institutes as well as to affiliated FSU academic departments. The Centers and Institutes within ISPA perform a wide variety of tasks and research in furtherance of ISPA's mission and provide a wealth of knowledge to state and federal agencies, the public and other researchers. Their efforts are detailed individually.
- ✓ The average return on investment is 1:60. That is, for each E&G dollar invested, an additional 60 cents is generated. Much of this comes from sales of services or products. Individual Centers and Institutes' returns on investments are reported separately.
- ✓ ISPA provides essential administrative tasks for the 16 Centers and Institutes underneath its umbrella. These tasks are critical for their operation and should continue to be performed centrally.
- ✓ There is no need to change its mission or structure.
- ✓ The Institute is funded from E&G funds as well as sales of products and services. Its E&G funds are provided through a percentage of grants allocated for administrative services. Through this investment, administrative support for over \$650 million is provided.
- ✓ There is no change in classification needed.
- ✓ Retain active status.

CENTER FOR ECONOMIC FORECASTING AND ANALYSIS (CEFA)

3200 Commonwealth Blvd.
Suite 137
Tallahassee, FL 32303-2770

Phone: (850) 644-7357
Director: Dr. Julie Harrington
jharrington@cefa.fsu.edu
(850) 644-7357
Budget and funding contact: Lee Howell
rlh02@my.fsu.edu
(850) 644-0842
Web site: <http://www.cefa.fsu.edu>

MISSION AND ACTIVITIES

What is the Center's or Institute's mission statement?

The FSU Center for Economic Forecasting and Analysis (CEFA) specializes in conducting economic research and performing economic analyses to examine public policy issues across a spectrum of research areas. CEFA provides advanced research and training in energy, aerospace, environmental economics, and economic development, among other areas. FSU CEFA also serves as a foundation for training students on applied economics, using modeling software and other econometric and statistical tools. FSU CEFA's role is to assist national, state and local government and private and non-sector sector interests in examining and understanding the economic side of current public policy issues facing Florida and the nation.

Briefly, what activities are consistently performed that move the Center/Institute toward meeting its established mission?

- a. Economic impact analysis/modeling
- b. Economic forecasting, projections, risk analysis/modeling

What is the Center or Institute best known for?

Economic impact analysis, applied economics, especially ROI studies, and innovation.

What is the greatest strength of the Center or Institute?

Innovative research, and ability to form sustainable partnerships with other universities, and private and public sectors, and work in collaboration towards respective research strengths and for the public good. The Center is results/solutions-oriented.

What are the most significant challenges facing the Center or Institute?

Consistent longer term grants/research support including federal funding in order to attract and maintain professional staff.

FUNDING (2006–2007 THROUGH 2010–2011)

What is the source and amount of expenditures from 2006-2007 to 2010-2011 for the Center/Institute using the following categories?

Expenditures	2006–2007	2009–2010	2010–2011
University (E&G)	N/A	N/A	N/A
State (General Revenue Other than E&G)	N/A	N/A	N/A
State (C&G)	\$39,580	\$144,212	\$63,002
Federal	N/A	\$22,926	\$69,152
Local	\$42,241	\$53,327	\$5,278
Private / nonprofit organization	\$12,130	\$6,253	\$119,439
Endowment proceeds	N/A	N/A	N/A
Proceeds from patents or royalties	N/A	N/A	N/A
Sales from services or products	N/A	N/A	N/A
Others (specify)	N/A	N/A	N/A
Total expenditures	\$93,951	\$226,718	\$256,871

ENDOWMENT INFORMATION

Is the Center/Institute supported in whole or in part by proceeds from an endowment? No

What is the amount of the endowment?

Where is the endowment managed?

Does the C/I spend only interest earnings?

Does the C/I spend part of the capital of the endowment?

CONTRACT AND GRANT INFORMATION

	2006–2007	2009–2010	2010–2011
Number of proposals submitted	3	10	8
Number of proposals funded	3	9	12
Proposals Made Jointly with Individuals not Directly associated with the Center / Institute	2	1	2
Total amount of awards	\$38,406	\$220,224	\$95,245

**** NOTE:** Proposals submitted during a fiscal year are not necessarily funded in the same fiscal year or are awards and/or transfers from an existing award. Therefore, the number of proposals funded and total amount of awards includes data on all proposal funding received for this period of time.

Were any of the contracts or grants multi-year? Yes

How many years does the Center or Institute have left on any current contract or grant (past 2010-2011)? 5

Have any contracts or grants been renewed in the period from 2006-2007 to 2010-2011 and, if so, how many? 16

OTHER CENTER OR INSTITUTE ACTIVITIES

Has the Center/Institute generated any patents or royalties? No

Has the Center or Institute applied for a patent that has not yet been granted? If so, please describe. No

Comments or additional information.

EMPLOYMENT

(2006–2007 THROUGH 2010–2011)

UNIVERSITY POSITIONS ASSOCIATED WITH THE C/I:

	2006–2007	2009–2010	2010–2011
Number of Faculty (FTE)	.69	.52	1.27
Number of A&P and USPS positions (FTE)	0	0	0
Total Positions	.69	.52	1.27

STUDENT EMPLOYMENT (INCLUDE GRADUATE AND UNDERGRADUATE):

	2006–2007	2009–2010	2010–2011
Number of research assistants employed (FTE)	.74	1.36	1.36
Number of teaching assistants employed (FTE)	0	0	0
Number of interns (with stipend or OPS)	0	0	0
Number of interns (without pay)	0	0	0
Total student positions	.74	1.36	1.36

**OTHER STUDENT FINANCIAL BENEFITS
(INCLUDING GRADUATE AND UNDERGRADUATE):**

	2006–2007	2009–2010	2010–2011
	Number/Amount	Number/Amount	Number/Amount
Out of state tuition waivers	0/0	0/0	0/0
Student fellowships	0/0	0/0	0/0
Scholarships	0/0	0/0	0/0
Post-doctoral support	0/0	0/0	0/0
Amt of student travel support	0/0	0/0	2/\$500
Amt of registration for student conference attendance	0/0	0/0	1/\$50
Other support	0/0	0/0	0/0

Comments or additional information

FSU CEFA does not typically provide fellowships/scholarships,etc. However, we do sometimes support in-state tuition on grants.

We currently have a “visiting scholar” for whom CEFA is providing 1.5 years of office support (PhD, Economics, from China). We will be requesting another visiting scholar in 2012 (including 1-2 years of office support).

FSU CEFA office staff includes post-doc researchers, and doctoral/masters graduate students, and bachelor’s students. Their salaries/wages are paid for usually 20 hours/week as OPS researchers/research assistants.

RESEARCH AND EXTENSION

(2006–2007 THROUGH 2010–2011)

*Note: web-delivered and CD-Rom publications are counted in these totals.***PUBLICATIONS IN REFEREED JOURNALS***Note: Do not include those credited to a faculty member's primary academic department that are unrelated to the C/I mission.*

	2006–2007	2009–2010	2010–2011
Number of faculty publications	1	0	1
Number of student publications	0	0	0
Number of publications authored jointly with other faculty at FSU	2	2	0
Number of publications authored jointly with students in the C/I	3	2	6
Number of publications authored jointly with faculty at locations other than FSU	1	2	3

*Some publications include project reports.

*Please have a list of relevant publications available if requested.***OTHER PUBLICATIONS AND CONFERENCE PAPERS**

	2006–2007	2009–2010	2010–2011
Number of extension or outreach publications	0	0	1
Number of national conference papers submitted	0	0	0
Number of national conference papers accepted	0	0	0
DATE, CONFERENCE AND NAME OF PRESENTATION(S)	NA	NA	NA
Number of regional conference papers submitted	0	0	3
Number of regional conference papers accepted	0	0	3
DATE, CONFERENCE AND NAME OF PRESENTATION(S)	NA	NA	*

*Presentations were not based on submitted papers to conferences per se, but related to project work to various groups including to: La Salle Univ. Philippines, on media (FSU Issues in Education), and other professional meetings primarily in Florida.

ANNUAL REPORT

Does the Center or Institute produce an annual report? If so, please have copies available or provide the web link.

No

STUDENT PUBLICATIONS

	2006–2007	2009–2010	2010–2011
Number of student theses credited to or associated with the C/I	4	1	2
Number of dissertations	1	0	1
Number of any other student papers	2	3	2

PROFESSIONAL DEVELOPMENT AND ASSISTANCE

Consulting

	2006–2007	2009–2010	2010–2011
Number of consulting contracts	0	0	1
Name of consulting recipient(s)	0	0	1
Consulting Subject or Topic	N/A	N/A	Aviation
Amount of funding provided through general funds of the C/I	0	0	0
Amount of funding obtained through contract in addition to general C/I funds	0	0	0

*Only one “Consulting” type project was completed for \$12,595, however, work was conducted similar to the other research and CEFA viewed it as a private contract, handled by the FSU Research Foundation, not through general funds.

Technical Assistance

	2006–2007	2009–2010	2010–2011
Number of technical assistance sessions or seminars offered	0	0	0
Name of technical assistance recipient(s)	0	0	0
Technical Assistance Subject or Topic	0	0	0
Amount of Funding	0	0	0

CONFERENCES OR SYMPOSIA

How many conferences or symposia has the Center or Institute sponsored or hosted from 2006-2007 through 2010-2011? Please list.

Comments or additional information

FSU CEFA has a representative on the steering committees for both the UF/FSU Florida Climate Institute and the FSU Institute for Energy Systems, Economics and Sustainability. Collectively, both FCI and IESES have conducted conferences/symposia, workshops and brown bags too numerous to mention during this time period.

MANAGEMENT

Center/Institute organizational chart

No organizational chart per se; usually is pyramid structure; director at top; sometimes a second layer with “associate director”. CEFA is moving towards more of a “program manager” approach that is dynamic with one staff member taking charge of a particular project and often working as a team member on other consecutive projects.

Is the Center or Institute legislatively created?

No, although serves as staff to the Leadership Board for Applied Research Services (LBARPS).

Does the Center/Institute have an advisory board?

No

How often are meetings held?

Does the board manage the C/I or does it serve in an advisory capacity?

Please describe and include a list of current members.

<i>How long has the Center/Institute director served?</i>	Since April 2006
<i>How does the Center/Institute directorship change?</i>	The directorship changes through FSU's standard hiring process, with the Institute director's immediate supervisor, currently Dr. Robert B. Bradley, Vice President for Planning and Programs, making the hiring decision.
<i>Are there other issues associated with management transition?</i>	Not yet
<i>If there are multiple sites, how are they administered? Who has the final oversight?</i>	
<i>Comments or additional information</i>	On Advisory Committee or Board: Not at this time, but it would be a good idea.

ADDITIONAL ISSUES

<i>Issues facing the Center or Institute</i>	The Center focus is on obtaining longer term (i.e., federal and/or multi-year projects) in order to attract/retain a qualified talent personnel pool.
--	---

OVERALL EVALUATION

- ✓ The Center's activities are consistent with its mission through economic impact analysis/modeling, economic forecasting and projections and risk analysis and modeling for a variety of clients from the public and private sector. It also serves as a foundation for training FSU students on applied economics.
- ✓ No E&G funds are used by CEFA; a return on investment calculation is not applicable.
- ✓ CEFA should continue as a means through which we provide students and faculty with research experience leading to publications, theses and dissertations. These efforts are sometimes completed jointly with other FSU faculty or with faculty at other universities. CEFA also provides employment for faculty and research assistants.
- ✓ There is no need for changes in mission or organizational structure.
- ✓ All funding comes from outside sources, including federal, state and local contracts as well as private funds. Other than the need to continue outside contracts, no budget issues exist.
- ✓ No classification changes are necessary.
- ✓ Retain active status.

CENTER FOR HIGHER EDUCATION RESEARCH, TEACHING AND INNOVATION (CHERTI)

Room 1012F Stone Building
P.O. Box 3064450
Tallahassee, FL 32306-4450

Phone: (850) 645-9329
Director: Dr. T.K. Wetherell
tkwetherell@fsu.edu
(850) 645-9329
Budget and funding contact: Katie Brock
kbrock@fsu.edu
(850) 644-4564
Web site: <http://www.cherti.fsu.edu/>

*If multidisciplinary, please list
departments associated with C/I*

MISSION AND ACTIVITIES

*What is the Center's or Institute's
mission statement?*

The mission of the Center for Higher Education Research, Teaching and Innovation (CHERTI) is to conduct and promote research on significant issues facing higher education in the State of Florida. Specific attention will be devoted to the Community/State College System.

Briefly, what activities are consistently performed that move the Center/Institute toward meeting its established mission?

CHERTI conducts scholarly research in higher-education administration – with a strong impact throughout Florida’s community college and state university systems. The Center serves the systems by growing and developing faculty resources, student opportunities, and a robust academic community.

Examples of CHERTI efforts include:

- a. Take advantage of new modes of delivery of instruction, conversion of 3 graduate education courses to an online format. The courses are: Ethics in Higher Education, American Community College System and Institutional Advancement. This is in concert with the movement within the College of Education to move from an online Master’s Degree program to an online Ed.D. program;
- b. Restructure Presidential Seminar Class to better reflect current topics and maintain currency;
- c. Attract new faculty to FSU;
- d. Attract new grant funding to the College of Education at FSU; and
- e. Attract funding of new national research initiatives such as Linking Institutional Policies to Student Success (LIPPS). This multi-state effort seeks to identify specific institution-wide policies that might be leveraged to increase college student engagement. Participating institutions are from California, Florida, Iowa, Pennsylvania and Texas.

What is the Center or Institute best known for?

This is a new Center. It is best known for capitalizing on current trends in education, through curriculum development, curriculum change, attraction of new faculty and participation in research initiatives.

What is the greatest strength of the Center or Institute?

Ability to offer visibility of FSU’s faculty and resources.

What are the most significant challenges facing the Center or Institute?

- reduced funding for higher education at the federal and state level;
- increased competition for good graduate students (Graduate Assistant and Teaching Assistant positions are especially important); and
- the amount of time spent on administrative activities rather than teaching and research.

FUNDING

(2006–2007 THROUGH 2010–2011)

What is the source and amount of expenditures from 2006-2007 to 2010-2011 for the Center/Institute using the following categories?

Expenditures	2006–2007	2009–2010	2010–2011
University (E&G)	N/A	0	0
State (General Revenue Other than E&G)	N/A	0	0
State (C&G)	N/A	0	0
Federal	N/A	0	0
Local	N/A	0	0
Private / nonprofit organization	N/A	\$145,643	\$46,290
Endowment proceeds	N/A	0	0
Proceeds from patents or royalties	N/A	0	0
Sales from services or products	N/A	0	0
Others (SRAD-FSU Internal)	N/A	0	0
Total expenditures	N/A	\$145,643	\$46,290

ENDOWMENT INFORMATION

Is the Center/Institute supported in whole or in part by proceeds from an endowment?

No, but the funding is managed through the FSU Foundation.

What is the amount of the endowment?

Where is the endowment managed?

Does the C/I spend only interest earnings?

Does the C/I spend part of the capital of the endowment?

CONTRACT AND GRANT INFORMATION

	2006–2007	2009–2010	2010–2011
Number of proposals submitted	N/A	N/A	N/A
Number of proposals funded	N/A	N/A	N/A
Proposals Made Jointly with Individuals not Directly associated with the Center / Institute	N/A	N/A	N/A
Total amount of awards	N/A	N/A	N/A

Note: LIPPS funding was not awarded until the 2011-2012 school year.

*Were any of the contracts or grants
multi-year?*

*How many years does the Center
or Institute have left on any current
contract or grant (past 2010-2011)?*

*Have any contracts or grants been
renewed in the period from 2006-
2007 to 2010-2011 and, if so, how
many?*

OTHER CENTER OR INSTITUTE ACTIVITIES

*Has the Center/Institute generated
any patents or royalties?* No

*Has the Center or Institute applied
for a patent that has not yet been
granted? If so, please describe.* No

Comments or additional information.

EMPLOYMENT

(2006–2007 THROUGH 2010–2011)

UNIVERSITY POSITIONS ASSOCIATED WITH THE C/I:

	2006–2007	2009–2010	2010–2011
Number of Faculty (FTE)	N/A	.5	N/A
Number of A&P and USPS positions (FTE)	N/A	N/A	N/A
Total Positions	N/A	.5	N/A

STUDENT EMPLOYMENT (INCLUDE GRADUATE AND UNDERGRADUATE):

	2006–2007	2009–2010	2010–2011
Number of research assistants employed (FTE)	N/A	.07	.59
Number of teaching assistants employed (FTE)	N/A	N/A	N/A
Number of interns (with stipend or OPS)	N/A	N/A	N/A
Number of interns (Volunteers)	N/A	N/A	N/A
Total student positions	N/A	.07	.59

OTHER STUDENT FINANCIAL BENEFITS (INCLUDING GRADUATE AND UNDERGRADUATE):

	2006–2007 Number/Amount	2009–2010 Number/Amount	2010–2011 Number/Amount
Out of state tuition waivers	N/A/N/A	0/0	0/0
Student fellowships	N/A/N/A	0/0	0/0
Scholarships	N/A/N/A	0/0	0/0
Post-doctoral support	N/A/N/A	0/0	0/0
Amt of student travel support	N/A/N/A	0/0	0/0
Amt of registration for student conference attendance	N/A/N/A	0/0	0/0
Other support (specify)	N/A/N/A	0/0	0/0

Comments or additional information

RESEARCH AND EXTENSION

(2006–2007 THROUGH 2010–2011)

*Note: web-delivered and CD-Rom publications are counted in these totals.***PUBLICATIONS IN REFEREED JOURNALS***Note: Do not include those credited to a faculty member's primary academic department that are unrelated to the C/I mission.*

	2006–2007	2009–2010	2010–2011
Number of faculty publications	N/A	0	0
Number of student publications	N/A	0	0
Number of publications authored jointly with other faculty at FSU	N/A	0	0
Number of publications authored jointly with students in the C/I	N/A	0	0
Number of publications authored jointly with faculty at locations other than FSU	N/A	0	0*

*NOTE: Publication expected in Fall 2012. This will be in conjunction with faculty from other states through the LIPPS research initiative.

*Please have a list of relevant publications available if requested.***OTHER PUBLICATIONS AND CONFERENCE PAPERS**

	2006–2007	2009–2010	2010–2011
Number of extension or outreach publications	N/A	0	0
Number of national conference papers submitted	N/A	0	0*
Number of national conference papers accepted	N/A	0	0
DATE, CONFERENCE AND NAME OF PRESENTATION(S)	N/A	0	0
Number of regional conference papers submitted	N/A	0	0*
Number of regional conference papers accepted	N/A	0	0
DATE, CONFERENCE AND NAME OF PRESENTATION(S)	N/A	0	0

*NOTE: Conference presentations will be proposed for LIPPS efforts in Fall 2012. Data collection is occurring now.

ANNUAL REPORT

Does the Center or Institute produce an annual report? If so, please have copies available or provide the web link.

No

STUDENT PUBLICATIONS

	2006–2007	2009–2010	2010–2011
Number of student theses credited to or associated with the C/I	N/A	0	0
Number of dissertations	N/A	0	0
Number of any other student papers	N/A	0	0

PROFESSIONAL DEVELOPMENT AND ASSISTANCE**Consulting**

	2006–2007	2009–2010	2010–2011
Number of consulting contracts	N/A	0	0
Name of consulting recipient(s)	N/A	N/A	N/A
Consulting Subject or Topic	N/A	N/A	N/A
Amount of funding provided through general funds of the C/I	N/A	N/A	N/A
Amount of funding obtained through contract in addition to general C/I funds	N/A	N/A	N/A

Technical Assistance

	2006–2007	2009–2010	2010–2011
Number of technical assistance sessions or seminars offered	N/A	0	0
Name of technical assistance recipient(s)	N/A	N/A	N/A
Technical Assistance Subject or Topic	N/A	N/A	N/A
Amount of Funding	N/A	N/A	N/A

CONFERENCES OR SYMPOSIA

How many conferences or symposia has the Center or Institute sponsored or hosted from 2006-2007 through 2010-2011? Please list.

None

Comments or additional information

MANAGEMENT

Center/Institute organizational chart

Is the Center or Institute legislatively created?

No

Does the Center/Institute have an advisory board?

How often are meetings held?

Does the board manage the C/I or does it serve in an advisory capacity?

Please describe and include a list of current members

How long has the Center/Institute director served?

Since the Center's establishment, November 19, 2009

How does the Center/Institute directorship change?

Reappointment by the Director of the Institute for Science and Public Affairs

Are there other issues associated with management transition?

No transition has occurred

If there are multiple sites, how are they administered? Who has the final oversight?

N/A

Comments or additional information

ADDITIONAL ISSUES

Issues facing the Center or Institute

None

OVERALL EVALUATION

- ✓ The Center for Higher Education Research, Teaching and Innovation (CHERTI) is a new center. It is meeting its broad mission through its attraction of new faculty and research funding to FSU and its participation in a multi-state grant to study and enhance student engagement. The Center is also supportive of the use of technology as a mode of instructional delivery and has worked to increase online opportunities.
- ✓ There is no E&G funding; a ROI calculation is not applicable.
- ✓ The Center is involved in a wide variety of activities designed to identify and address issues of interest to higher education and should continue. It provides opportunities for student employment and involvement in research.
- ✓ No changes are necessary in its mission or organizational structure.
- ✓ The Center is funded through private donations that are managed through the FSU Foundation. Grant funds are also being sought which will enable CHERTI to continue its role in supporting and participating in research on topics of interest to higher education.
- ✓ No change in classification is recommended.
- ✓ Retain active status.

THE CENTER FOR PREVENTION AND EARLY INTERVENTION POLICY (CPEIP)

1339 East Lafayette Street
Tallahassee, FL 32301

Phone: (850) 922-1300
Director: Dr. Mimi Graham
mgraham@cpeip.fsu.edu
(850) 922-1352
Budget and funding contact: Scott Hoecherl
shoecherl@cpeip.fsu.edu
(850) 922-1311
Web site: www.cpeip.fsu.edu

*If multidisciplinary, please list
departments associated with the
C/I?*

MISSION AND ACTIVITIES

*What is the Center's or Institute's
mission statement?*

The Center provides leadership for effective prevention and early intervention policy for young children. Neuroscientific research supports the need for universal access to prevention and early intervention services. Our vision is that one day all children will be healthy, equipped to learn, and nurtured to develop their full potential. The Center investigates effective interventions, translates research into public policy and programs, and evaluates long term program impacts. Our work combines education, research, and community service.

Briefly, what activities are consistently performed that move the Center/Institute toward meeting its established mission?

- Training through the Harris Institute for Infant Mental Health, the Partners for a Healthy Baby Institute, and various contracts with other agencies and departments, such as the Department of Children and Families and the State Court System.
- Young Parents Project is our pilot project for pregnant or parenting teens that was first started in Miami, FL and is now in the process of expanding to the Tampa and Tallahassee regions.
- The Gadsden County Early Head Start program has been our community service and outreach center with both a home visiting program as well as a center-based program for young children.
- Our faculty provide technical assistance to various agencies across the state, including the Department of Children and Families, Child Welfare, the state court and judicial system, and Early Steps.

What is the Center or Institute best known for?

We are best known for our Partners for a Healthy Baby curricular series and training as well as the Infant Mental Health movement in Florida. We are also known for advocating for the needs of, and training on, serving the vulnerable populations of pregnant women, infants, toddlers, and families.

What is the greatest strength of the Center or Institute?

Our greatest strength is the passion, commitment, and dedication of the multidisciplinary faculty that we have located within the Center, including psychologists, infant/toddler specialists, social workers, and instructional designers. We use our multidisciplinary approach to translate the research for practitioners, and to disseminate this knowledge through our various trainings throughout the state and the nation.

What are the most significant challenges facing the Center or Institute?

Our most significant challenge is the lag between the science and public policy. We are continually educating the policymakers about the critical period in a child's life and the benefits of quality care and education for young and very young children, and pregnant and parenting teenagers.

FUNDING

(2006–2007 THROUGH 2010–2011)

What is the source and amount of expenditures from 2006-2007 to 2010-2011 for the Center/Institute using the following categories?

Expenditures	2006–2007	2009–2010	2010–2011
University (E&G)	\$119,328	\$208,947	\$98,975
State (General Revenue Other than E&G)	N/A	N/A	N/A
State (C&G)	\$1,358,263	\$43,905	\$14,914
Federal	\$1,246,376	\$2,580,943	\$1,841,815
Local	\$665,406	\$584,700	\$586,077
Private / nonprofit organization	\$1,359,452	\$834,816	\$1,524,360
Endowment proceeds	N/A	N/A	N/A
Proceeds from patents or royalties	N/A	N/A	N/A
Sales from services or products	N/A	\$436,389	\$519,605
Others (specify)	N/A	N/A	N/A
Total expenditures	\$4,748,825	\$4,689,700	\$4,585,746

ENDOWMENT INFORMATION

Is the Center/Institute supported in whole or in part by proceeds from an endowment? No

What is the amount of the endowment?

Where is the endowment managed?

Does the C/I spend only interest earnings?

Does the C/I spend part of the capital of the endowment?

CONTRACT AND GRANT INFORMATION

	2006–2007	2009–2010	2010–2011
Number of proposals submitted	17	12	9
Number of proposals funded	18	13	14
Proposals Made Jointly with Individuals not Directly associated with the Center / Institute	0	0	0
Total amount of awards	\$6,875,101	\$5,591,400	\$1,406,034

Were any of the contracts or grants multi-year?

Yes

How many years does the Center or Institute have left on any current contract or grant (past 2010-2011)?

Less than one year on six, one year, two years, and four years on others.

Have any contracts or grants been renewed in the period from 2006-2007 to 2010-2011 and, if so, how many?

Yes, there have been 28 renewals.

OTHER CENTER OR INSTITUTE ACTIVITIES

Has the Center/Institute generated any patents or royalties?

The CPEIP has developed the Partners for a Healthy Baby curriculum, which is a nationally recognized, research-based, practice-informed curriculum used by many home visiting programs. The Partners curriculum has 5 volumes covering pregnancy through baby's age 3 that are designed to support a systematic approach to planning and conducting effective home visits. Each volume has an accompanying set of full-color handouts for families in English or Spanish. The research-based content in the Partners curriculum addresses a wide range of topics associated with the goals of most home visiting programs including: improved prenatal health; positive parenting; enhanced child health and development; infant mental health; economic self-sufficiency; and family stability.

The five volumes are listed below and their initial sales date:

Before Baby Arrives (1999)
 Baby's First Six Months (1999)
 Baby's Months 7-12 (2000)
 Baby's Months 13-18 (2005)
 Toddlers Months 19-36 (2007)

Currently the royalty distribution agreements follow FSU's standard arrangement with 50% to the authors, 25% to the FSU Research Foundation and 25% to the CPEIP. Two volumes had 100% of the distribution going to the CPEIP for an initial period then reverting to the FSU standard arrangement. Baby's Months 13-18 had the arrangement of 100% to the CPEIP from 2005 thru 2010 and Toddlers Months 19-35 had the arrangement of 100% to the CPEIP 2007 thru 2011.

Has the Center or Institute applied for a patent that has not yet been granted? If so, please describe.

No

Comments or additional information.

EMPLOYMENT

(2006–2007 THROUGH 2010–2011)

UNIVERSITY POSITIONS ASSOCIATED WITH THE C/I:

	2006–2007	2009–2010	2010–2011
Number of Faculty (FTE)	10.28	11.36	10.67
Number of A&P and USPS positions (FTE)	26.41	17.92	20.41
Total Positions	36.69	29.28	31.08

STUDENT EMPLOYMENT (INCLUDE GRADUATE AND UNDERGRADUATE):

	2006–2007	2009–2010	2010–2011
Number of research assistants employed (FTE)	4.42	3.55	2.65
Number of teaching assistants employed (FTE)	N/A	N/A	N/A
Number of interns (with stipend or OPS)	N/A	N/A	N/A
Number of interns (without pay)	N/A	N/A	N/A
Total student positions	4.42	3.55	2.65

**OTHER STUDENT FINANCIAL BENEFITS
(INCLUDING GRADUATE AND UNDERGRADUATE):**

	2006–2007	2009–2010	2010–2011
	Number/Amount	Number/Amount	Number/Amount
Out of state tuition waivers	0/0	0/0	0/0
Student fellowships	0/0	0/0	0/0
Scholarships	0/0	0/0	0/0
Post-doctoral support	0/0	0/0	0/0
Amt of student travel support	0/0	0/0	0/0
Amt of registration for student conference attendance	0/0	0/0	0/0
Other support (specify)	0/0	0/0	0/0

Comments or additional information

Heather Stone completed her doctoral dissertation through work with the FSU Harris Institute for Infant Mental Health under the mentoring of Drs. Herbert Quay and Anne Hogan between 2009 through 2012. Dr. Stone's research centered around the data collected through the infant mental health training performed by the Harris Institute regarding the therapist competency areas. In December 2011, she presented a poster about her research at the national Zero to Three Conference in Washington, DC. Subsequently, Dr. Stone defended her dissertation in January 2012, successfully completing all requirements for her doctoral degree.

Keith Donohue completed his doctoral dissertation through work with the FSU Harris Institute for Infant Mental Health under the mentoring of Drs. Herbert Quay and Anne Hogan in 2007.

RESEARCH AND EXTENSION

(2006–2007 THROUGH 2010–2011)

*Note: web-delivered and CD-Rom publications are counted in these totals.***PUBLICATIONS IN REFEREED JOURNALS***Note: Do not include those credited to a faculty member's primary academic department that are unrelated to the C/I mission.*

	2006–2007	2009–2010	2010–2011
Number of faculty publications	0	0	0
Number of student publications	0	0	0
Number of publications authored jointly with other faculty at FSU	1	1	0
Number of publications authored jointly with students in the C/I	0	1	0
Number of publications authored jointly with faculty at locations other than FSU	1	0	0

*Please have a list of relevant publications available if requested.***OTHER PUBLICATIONS AND CONFERENCE PAPERS**

	2006–2007	2009–2010	2010–2011
Number of extension or outreach publications	3	2	5
Number of international conference papers submitted	4	0	0
Number of international conference papers accepted	4	0	0
DATE, CONFERENCE AND NAME OF PRESENTATION(S)	*	*	*
Number of national conference papers submitted	4	0	0
Number of national conference papers accepted	4	0	0
DATE, CONFERENCE AND NAME OF PRESENTATION(S)	*	*	*
Number of regional conference papers submitted	5	3	4
Number of regional conference papers accepted	5	3	4
DATE, CONFERENCE AND NAME OF PRESENTATION(S)	*	*	*

*Available upon request

ANNUAL REPORT

Does the Center or Institute
produce an annual report? If so,
please have copies available or
provide the web link.

No

STUDENT PUBLICATIONS

	2006–2007	2009–2010	2010–2011
Number of student theses credited to or associated with the C/I	0	0	0
Number of dissertations	1	0	0
Number of any other student papers	0	0	0

PROFESSIONAL DEVELOPMENT AND ASSISTANCE

Consulting

	2006–2007	2009–2010	2010–2011
Number of consulting contracts	14	12	9
Name of consulting recipient(s)	*	*	*
Consulting Subject or Topic	*	*	*
Amount of funding provided through general funds of the C/I	\$119,328	\$98,975	\$98,975
Amount of funding obtained through contract in addition to general C/I funds	\$2,023,397	\$2,640,379	\$1,920,754

*Available upon request

Technical Assistance

	2006–2007	2009–2010	2010–2011
Number of technical assistance sessions or seminars offered	60	60	72
Name of technical assistance recipient(s)	*	*	*
Technical Assistance Subject or Topic	*	*	*
Amount of Funding	\$1,787,358	\$1,235,649	\$2,139,376

*Available upon request

CONFERENCES OR SYMPOSIA

How many conferences or symposia has the Center or Institute sponsored or hosted from 2006-2007 through 2010-2011? Please list.

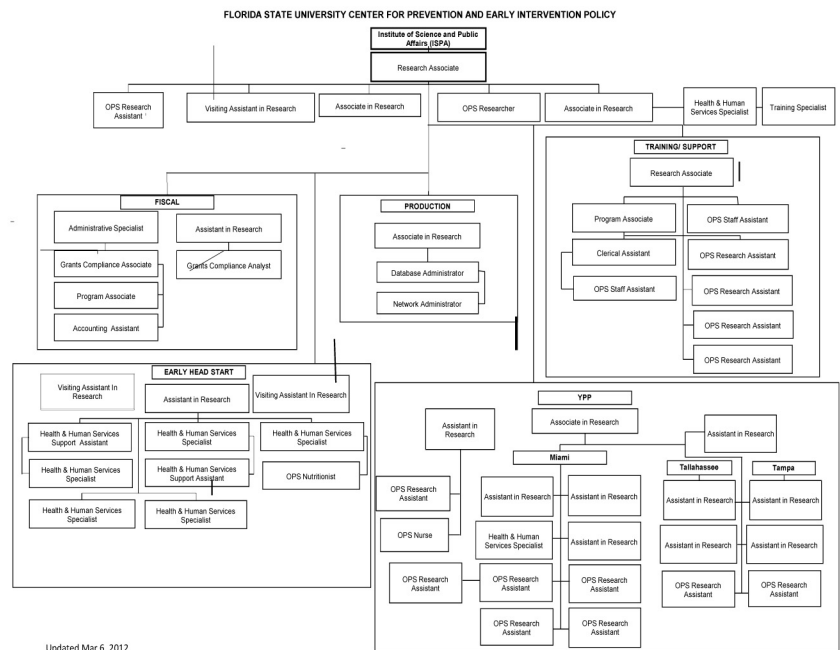
The Center has sponsored or hosted 16 conferences/symposia.

- Partners for a Healthy Baby Home Visiting Curricula, Orlando, FL, September 19-22, 2006.
- Florida's Infant Mental Health Strategic Planning Summit, Tallahassee, FL, January 17, 2007.
- Florida's Early Childhood Mental Health Consultation in Childcare Summit. May 14, 2010, Tallahassee, FL.
- Partners for a Healthy Baby Home Visiting Curricula, Orlando, FL, September 22-25, 2009.
- Partners for a Healthy Baby Home Visiting Curricula, Orlando, FL, January 5-8, 2010.
- Partners for a Healthy Baby Home Visiting Curricula, Orlando, FL, February 9-12, 2010.
- Partners for a Healthy Baby Home Visiting Curricula, Orlando, FL, March 2-5, 2010.
- Partners for a Healthy Baby Home Visiting Curricula, Orlando, FL, June 29-July 2, 2010.
- Partners for a Healthy Baby Home Visiting Curricula, Orlando, FL, September 28-October 1, 2010.
- Partners for a Healthy Baby Home Visiting Curricula, Orlando, FL, January 4-7, 2011.
- Partners for a Healthy Baby Home Visiting Curricula, Orlando, FL, April 26-29, 2011.
- Partners for a Healthy Baby Home Visiting Curricula, Orlando, FL, June 7-10, 2011.
- Early Steps Statewide Training Meeting, Orlando, FL, September 29 – October 1, 2010.
- Florida Association for Infant Mental Health Annual Conference, June 1, 2011.
- Funding Opportunities for Early Childhood Mental Health Consultation in Childcare, June 24, 2011.
- Implementing early childhood mental health consultation: Successful partnerships for financing, Webinar, June 28, 2011.

Comments or additional information

MANAGEMENT

Center/Institute organizational chart



Is the Center or Institute legislatively created?

No, the Center was not legislatively created. The Center began in 1989 at the Collins Center for Public Policy, under the direction of Senator Lawton Chiles. When Senator Chiles became Governor, the work of the Center continued in the Policy Studies Clinic at the FSU College of Law until it was established in February, 1991 as part of the FSU Institute for Science and Public Affairs.

Does the Center/Institute have an advisory board?

No

How often are meetings held?

Does the board manage the C/I or does it serve in an advisory capacity?

Please describe and include a list of current members.

<i>How long has the Center/Institute director served?</i>	The director has served for 19 years, since 1993.
<i>How does the Center/Institute directorship change?</i>	The directorship changes through FSU's standard hiring process, with the Institute director's immediate supervisor, Dr. Robert B. Bradley, Vice President for Planning and Programs, making the hiring decision.
<i>Are there other issues associated with management transition?</i>	No
<i>If there are multiple sites, how are they administered? Who has the final oversight?</i>	The Center's main location in Tallahassee has final oversight of all the sites, which include: Early Head Start in Gadsden County and the Young Parents Project in Miami, Tampa, and Tallahassee.
<i>Comments or additional information</i>	

ADDITIONAL ISSUES

Issues facing the Center or Institute

OVERALL EVALUATION

- ✓ The activities of the Center clearly meet its mission. Its involvement in a number of efforts, including curriculum development, sponsorship of pilot projects in the field, sponsorship of symposia and numerous conference presentations provide the public with access to information and application of research in furtherance of its mission to provide leadership for effective prevention and early intervention policy for young children.
- ✓ The Center's return on E&G investment is 1:35.2.
- ✓ The CPEIP provides a valuable service to policymakers, professionals and the public and should continue. It disseminates information through a wide variety of means including conference presentations, symposia, consulting and technical assistance. It has been instrumental in two doctoral dissertations and provides employment to over 31 faculty and professional staff and opportunities research assistantships for 2.65 FTE.
- ✓ There are no changes recommended in its mission or organizational structure.
- ✓ The Center is awarded a large amount of contracts from the federal, state and nonprofit organizations. It is expected these efforts will continue successfully.
- ✓ No change in classification is needed.
- ✓ Retain active status.

FLORIDA CONFLICT RESOLUTION CONSORTIUM/ FCRC CONSENSUS CENTER

Morgan Building, Suite 236
2035 East Paul Dirac Drive
Tallahassee, FL 32310

Phone: (850) 644-6320
Director: Robert M. Jones
rmjones@fsu.edu
(850) 644-6320
Budget and funding contact: Katie Brock
kbrock@fsu.edu
(850) 644-4564
Web site: <http://consensus.fsu.edu>

*If multidisciplinary, please list
departments associated with the
C/I?*

MISSION AND ACTIVITIES

*What is the Center's or Institute's
mission statement?*

The FCRC Consensus Center serves as an independent public resource facilitating consensus solutions and supporting collaborative action.

The FCRC assists citizens and public and private interests in Florida to seek cost-effective solutions to public disputes and problems through the use of consensus building and alternative dispute resolution.

Briefly, what activities are consistently performed that move the Center/Institute toward meeting its established mission?

- a. The Center designs and facilitates collaborative, consensus building processes that promote effective public policy for local, regional, state, and federal government;
- b. designs and facilitates public participation workshops for government agencies and non-governmental organizations;
- c. provides strategic planning, visioning, and organizational consultation for government agencies and non-governmental organizations;
- d. provides open enrollment and contract collaborative skills training for government agencies and non-governmental organizations; and
- e. promotes collaboration and consensus building leadership at FSU such as serving on the Carnegie Community Engagement Proposal Task Force established by the Provost.

What is the Center or Institute best known for?

The FCRC is best known for its collaborative, consensus building processes. This core service has provided a reputation of excellence in creating strong public policy throughout Florida and nationally.

What is the greatest strength of the Center or Institute?

A dedicated staff with over 25 years of experience and expertise.

What are the most significant challenges facing the Center or Institute?

A dedicated funding stream is our greatest challenge. We generate all of our funds from contracts for service.

FUNDING

(2006–2007 THROUGH 2010–2011)

What is the source and amount of expenditures from 2006-2007 to 2010-2011 for the Center/Institute using the following categories?

Expenditures	2006–2007	2009–2010	2010–2011
University (E&G)	N/A	N/A	N/A
State (General Revenue Other than E&G)	N/A	N/A	N/A
State (C&G)	\$785,912	\$411,999	\$284,354
Federal	\$62,980	\$193,790	\$261,778
Local	\$85,570	\$221,301	\$25,115
Private / nonprofit organization	\$103,537	\$89,766	\$238,341
Endowment proceeds	N/A	N/A	N/A
Proceeds from patents or royalties	N/A	N/A	N/A
Sales from services or products	N/A	\$63,685	\$94,311
Others (specify)	N/A	N/A	N/A
Total expenditures	\$1,037,999	\$980,541	\$903,899

ENDOWMENT INFORMATION

Is the Center/Institute supported in whole or in part by proceeds from an endowment? No

What is the amount of the endowment?

Where is the endowment managed?

Does the C/I spend only interest earnings?

Does the C/I spend part of the capital of the endowment?

CONTRACT AND GRANT INFORMATION

	2006–2007	2009–2010	2010–2011
Number of proposals submitted	16	17	15
Number of proposals funded	16	13	18
Proposals Made Jointly with Individuals not Directly associated with the Center / Institute	0	0	0
Total amount of awards	\$927,668	\$744,103	\$709,194

Note: Proposals submitted during a fiscal year are not necessarily funded in the same fiscal year or are awards and/or transfers from an existing award. Therefore, the number of proposals funded and total amount of awards includes data on all proposal funding received for this period of time.

Were any of the contracts or grants multi-year?

Yes

How many years does the Center or Institute have left on any current contract or grant (past 2010-2011)?

One year

Have any contracts or grants been renewed in the period from 2006-2007 to 2010-2011 and, if so, how many?

Yes, there have been 36 renewals

OTHER CENTER OR INSTITUTE ACTIVITIES

Has the Center/Institute generated any patents or royalties?

No

Has the Center or Institute applied for a patent that has not yet been granted? If so, please describe.

No

Comments or additional information.

EMPLOYMENT (2006–2007 THROUGH 2010–2011)

UNIVERSITY POSITIONS ASSOCIATED WITH THE C/I:

	2006–2007	2009–2010	2010–2011
Number of Faculty (FTE)	2.68	2.82	3
Number of A&P and USPS positions (FTE)	1.7	3	2.96
Total Positions	4.38	5.82	5.96

STUDENT EMPLOYMENT (INCLUDE GRADUATE AND UNDERGRADUATE):

	2006–2007	2009–2010	2010–2011
Number of research assistants employed (FTE)	.36	N/A	N/A
Number of teaching assistants employed (FTE)	N/A	N/A	N/A
Number of interns (with stipend or OPS)	N/A	N/A	N/A
Number of interns (without pay)	N/A	N/A	N/A
Total student positions	.36	N/A	N/A

OTHER STUDENT FINANCIAL BENEFITS (INCLUDING GRADUATE AND UNDERGRADUATE):

	2006–2007 Number/Amount	2009–2010 Number/Amount	2010–2011 Number/Amount
Out of state tuition waivers	0/0	0/0	0/0
Student fellowships	0/0	0/0	0/0
Scholarships	0/0	0/0	0/0
Post-doctoral support	0/0	0/0	0/0
Amt of student travel support	0/0	0/0	0/0
Amt of registration for student conference attendance	0/0	0/0	0/0
Other support (specify)	0/0	0/0	0/0

Comments or additional information

Prior to our loss of E&G funding in 2003, the Center funded a graduate research assistantship with the Department of Urban and Regional Planning and worked with graduate students in the School of Public Administration and Policy. Under a Board of Governor's project, funded in 2007-09, the Center hired graduate and undergraduate students to assist in documentation and research regarding campus master planning and SUS community engagement.

RESEARCH AND EXTENSION

(2006–2007 THROUGH 2010–2011)

*Note: web-delivered and CD-Rom publications are counted in these totals.***PUBLICATIONS IN REFEREED JOURNALS***Note: Do not include those credited to a faculty member's primary academic department that are unrelated to the C/I mission.*

	2006–2007	2009–2010	2010–2011
Number of faculty publications	0	1	1
Number of student publications	0	0	0
Number of publications authored jointly with other faculty at FSU	0	0	0
Number of publications authored jointly with students in the C/I	0	0	0
Number of publications authored jointly with faculty at locations other than FSU	0	0	0

*Please have a list of relevant publications available if requested.***OTHER PUBLICATIONS AND CONFERENCE PAPERS**

	2006–2007	2009–2010	2010–2011
Number of extension or outreach publications	0	0	0
Number of national conference papers submitted	0	0	0
Number of national conference papers accepted	0	0	0
DATE, CONFERENCE AND NAME OF PRESENTATION(S)	N/A	N/A	N/A
Number of regional conference papers submitted	0	0	0
Number of regional conference papers accepted	0	0	0
DATE, CONFERENCE AND NAME OF PRESENTATION(S)	N/A	N/A	N/A

Comments or additional information

The Center staff have regularly contributed by participation in and presentations on conference expert panels that do not result in conference paper presentation.

All of the Center's projects (average of 30+ each year) result in meeting and project reports for the client agency. Work on each project involves a mixture of expert consultation, process design, meeting facilitation and documentation.

ANNUAL REPORT

Does the Center or Institute produce an annual report? If so, please have copies available or provide the web link.

<http://consensus.fsu.edu/Leadership-Letters/FCRC-Leadership-Letter-Jan-2012.pdf>

STUDENT PUBLICATIONS

	2006–2007	2009–2010	2010–2011
Number of student theses credited to or associated with the C/I	0	0	0
Number of dissertations	0	0	0
Number of any other student papers	0	0	0

PROFESSIONAL DEVELOPMENT AND ASSISTANCE**Consulting**

	2006–2007	2009–2010	2010–2011
Number of consulting contracts	1	1	0
Name of consulting recipient(s)	*	*	N/A
Consulting Subject or Topic	**	***	N/A
Amount of funding provided through general funds of the C/I	N/A	N/A	N/A
Amount of funding obtained through contract in addition to general C/I funds	\$200,000	\$120,000	N/A

*Board of Governors

**Campus Master Planning

***SUS Community Engagement

Technical Assistance

	2006–2007	2009–2010	2010–2011
Number of technical assistance sessions or seminars offered	4	5	4
Name of technical assistance recipient(s)	See list	See list	See list
Technical Assistance Subject or Topic	*	**	**
Amount of Funding	\$34,318	\$23,950	\$24,835

2006 – 2007:

- Palm Beach County
- City of Neptune Beach
- City of Eustis
- City of Palm Bay

2009 – 2010:

- N FL Transportation Planning Organization (TPO)
- FL Housing Coalition
- Dept. of Community Affairs
- Capital Regional Transportation Planning Agency (CRTPA)
- City of Lake Worth

2010 – 2011:

- Agency for Persons w/Disabilities,
- Dept. of Environmental Protection
- Volusia Co
- TPO
- Florida Geographic Alliance

CONFERENCES OR SYMPOSIA

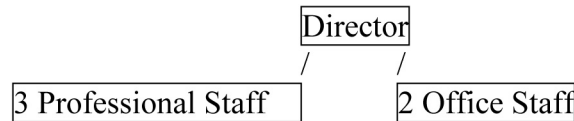
How many conferences or symposia has the Center or Institute sponsored or hosted from 2006-2007 through 2010-2011? Please list.

- National Policy Consensus Initiative Board Meeting, Northwest Florida.
- University Network for Collaborative Governance annual meeting, Jupiter, Florida.
- Association for Conflict Resolution, Environmental & Public Policy Section Annual Conference, Jupiter, Florida

Comments or additional information

MANAGEMENT

Center/Institute organizational chart



Is the Center or Institute legislatively created?

Yes. See Section 1004.59, F.S.

Does the Center/Institute have an advisory board?

Yes

How often are meetings held?

1-2 per year

Does the board manage the C/I or does it serve in an advisory capacity?

Advisory

Please describe and include a list of current members.

- Robert Bradley, Co-Chair, Vice President for Planning and Programs, Florida State University, Tallahassee, FL
- Linda Loomis Shelley, Co-Chair, Fowler, White, Boggs, PA, Former Secretary of DCA, Tallahassee, FL
- B. Lester Abberger, Investment Banker and Managing Partner, B.L. Abberger and Company, Tallahassee, FL
- Charles Bronson, Former Commissioner of Agriculture, Tallahassee, FL
- Glenda Hood, Hood Partners, LLC, Former Secretary of State, Orlando, FL
- Lila Jaber, Gunster Law, Tallahassee, FL
- Leerie Jenkins, Chair and CEO, Reynolds, Smith and Hill, Jacksonville, FL
- Harry Lerner, President, Harry Lerner Real Estate Advisors, Tampa, FL
- Larry “Bud” Meyer, President and CEO, Meyer Communications, LLC, Miami, FL
- David Powell, Hopping, Green and Sams P.A., Tallahassee, FL
- Ken Pruitt, Property Appraiser, Former State Senator, Port St. Lucie, FL
- Alan Reynolds, Chairman and Chief Executive Officer, Wilson Miller, Inc., Naples, FL
- Robert Rhodes, Foley and Lardner, Jacksonville, FL

<i>How long has the Center/Institute director served?</i>	20 years
<i>How does the Center/Institute directorship change?</i>	The directorship changes through FSU's standard hiring process, with the Institute director's immediate supervisor, Dr. Robert B. Bradley, Vice President for Planning and Programs, making the hiring decision.
<i>Are there other issues associated with management transition?</i>	Not currently
<i>If there are multiple sites, how are they administered? Who has the final oversight?</i>	We have a partnership with the University of Central Florida (UCF). The Institute of Government at UCF administers the site.
<i>Comments or additional information</i>	

ADDITIONAL ISSUES

<i>Issues facing the Center or Institute</i>	Downturn in state agency budgets. Funding is always our chief concern.
--	--

OVERALL EVALUATION

- ✓ The FCRC is accomplishing its mission of facilitating consensus solutions and supporting collaborative action primarily through training, symposia, consulting and technical assistance activities. Its clients are largely governmental entities, including the Board of Governors and state, county and city governments.
- ✓ There is no E&G funding; no direct ROI can be calculated since the only university investment is through indirect funds.
- ✓ The Center's activities should be continued. It provides an important resource to numerous entities statewide in the field of conflict resolution. While it does not provide opportunities for publication, the FCRC facilitates training and meetings and produces project reports to over 30 clients annually. It also provides employment for nearly 6 full-time faculty and professional staff.
- ✓ No changes are necessary for its structure or mission.
- ✓ The FCRC is funded exclusively through contracts with clients. Efforts to obtain funding have been successful, though at reduced amounts. These efforts will continue.
- ✓ No change in classification is needed.
- ✓ Retain active status.

FLORIDA RESOURCES AND ENVIRONMENTAL ANALYSIS CENTER (FREAC)

Suite 2200, Building C
University Center
Tallahassee, FL 32306-2641

Phone: (850) 644-2007
Director: James R. Anderson, Jr.
janderson@fsu.edu
(850) 644-2883
Budget and funding contact: Katie Brock
kbrock@fsu.edu
(850) 644-4564
Web site: www.freac.fsu.edu

*If multidisciplinary, please list
departments associated with the
C/I?*

MISSION AND ACTIVITIES

*What is the Center's or Institute's
mission statement?*

FREAC provides critical support and analysis on Florida's geographic, and natural and environmental resources. FREAC provides support to other university centers and departments as well as conducting its own research activities. Staff members, skilled in cartography, geographic information systems, multimedia programming, web design, and desktop publishing are utilized to complete projects dealing with resource management, environmental analysis, data analysis and formatting, and providing technical support to other university researchers. Through its Florida Natural Areas Inventory Program, services are offered in the areas of Natural Resource Inventory, Ecospatial Analysis, Conservation Planning, and Ecological Monitoring. The Center maintains a large inventory of digital data that is available to government agencies and the private sector.

Briefly, what activities are consistently performed that move the Center/Institute toward meeting its established mission?

- a. Maintain a high level of C&G funding that utilizes our staff expertise and provides a valuable service to our government clients.
- b. FREAC researchers are available to consult with government agencies as to how best their spatial data needs.
- c. Continued development of spatial delivery systems to meet demand for available data.
- d. Continuous work with spatial data sets to provide common projections and GIS analysis.

What is the Center or Institute best known for?

Production of high quality publications including atlases, natural resource publications, websites that provide spatial data, spatial analysis utilizing GIS, information and expertise about Florida's ecological resources, interactive mapping programming, and technical assistance about these topics.

What is the greatest strength of the Center or Institute?

State and local government familiarity with our expertise and repeat C&G awards from multiple agencies.

What are the most significant challenges facing the Center or Institute?

- Maintaining C&G funding levels to support professional staff and to secure student funding as part of these C&G projects.
- Securing funding and our maintaining our IT infrastructure to provide for delivery and processing and spatial data.
- Continuing to educate policy makers on the value of the data that we provide and work with.

FUNDING

(2006–2007 THROUGH 2010–2011)

What is the source and amount of expenditures from 2006-2007 to 2010-2011 for the Center/Institute using the following categories?

Expenditures	2006–2007	2009–2010	2010–2011
University (E&G)	\$346,366	\$326,930	\$279,996
State (General Revenue Other than E&G)	N/A	N/A	N/A
State (C&G)	\$1,799,057	\$1,595,628	\$1,094,741
Federal	\$292,328	\$552,580	\$392,127
Local	\$191,078	\$123,780	\$148,318
Private / nonprofit organization	\$63,984	\$313,020	\$319,780
Endowment proceeds	N/A	\$145	N/A
Proceeds from patents or royalties	N/A	N/A	N/A
Sales from services or products	\$174,969	\$180,384	\$239,780
Others (specify)	N/A	N/A	N/A
Total expenditures	\$2,867,782	\$3,092,467	\$2,474,742

ENDOWMENT INFORMATION

Is the Center/Institute supported in whole or in part by proceeds from an endowment?

No

What is the amount of the endowment?

Where is the endowment managed?

Does the C/I spend only interest earnings?

Does the C/I spend part of the capital of the endowment?

CONTRACT AND GRANT INFORMATION

	2006–2007	2009–2010	2010–2011
Number of proposals submitted	46	36	52
Number of proposals funded	50	37	44
Proposals Made Jointly with Individuals not Directly associated with the Center / Institute	0	0	0
Total amount of awards	\$3,158,584	\$1,646,411	\$1,910,628

Note: Proposals submitted during a fiscal year are not necessarily funded in the same fiscal year or are awards and/or transfers from an existing award. Therefore, the number of proposals funded and total amount of awards includes data on all proposal funding received for this period of time.

Were any of the contracts or grants multi-year?

Yes

How many years does the Center or Institute have left on any current contract or grant (past 2010-2011)?

Less than one year on 17, one year on two, two years on one, four years on one, and nine years on one.

Have any contracts or grants been renewed in the period from 2006-2007 to 2010-2011 and, if so, how many?

Yes, there have been 121 renewals.

OTHER CENTER OR INSTITUTE ACTIVITIES

Has the Center/Institute generated any patents or royalties?

No

Has the Center or Institute applied for a patent that has not yet been granted? If so, please describe.

No

Comments or additional information.

EMPLOYMENT

(2006–2007 THROUGH 2010–2011)

UNIVERSITY POSITIONS ASSOCIATED WITH THE C/I:

	2006–2007	2009–2010	2010–2011
Number of Faculty (FTE)	4.82	4.79	4.32
Number of A&P and USPS positions (FTE)	32.33	32.6	23.47
Total Positions	37.15	37.39	27.79

STUDENT EMPLOYMENT (INCLUDE GRADUATE AND UNDERGRADUATE):

	2006–2007	2009–2010	2010–2011
Number of research assistants employed (FTE)	1.74	1.99	1.54
Number of teaching assistants employed (FTE)	N/A	N/A	N/A
Number of interns (with stipend or OPS)	N/A	N/A	N/A
Number of interns (without pay)	N/A	N/A	N/A
Total student positions	1.74	1.99	1.54

OTHER STUDENT FINANCIAL BENEFITS (INCLUDING GRADUATE AND UNDERGRADUATE):

	2006–2007 Number/Amount	2009–2010 Number/Amount	2010–2011 Number/Amount
Out of state tuition waivers	0/0	0/0	0/0
Student fellowships	0/0	0/0	0/0
Scholarships	0/0	0/0	0/0
Post-doctoral support	0/0	0/0	0/0
Amt of student travel support	0/0	0/0	0/0
Amt of registration for student conference attendance	0/0	0/0	0/0
Other support (specify)	0/0	0/0	0/0

Comments or additional information

RESEARCH AND EXTENSION

(2006–2007 THROUGH 2010–2011)

*Note: web-delivered and CD-Rom publications are counted in these totals.***PUBLICATIONS IN REFEREED JOURNALS***Note: Do not include those credited to a faculty member's primary academic department that are unrelated to the C/I mission.*

	2006–2007	2009–2010	2010–2011
Number of faculty publications	0	0	0
Number of student publications	0	0	0
Number of publications authored jointly with other faculty at FSU	1	1	1
Number of publications authored jointly with students in the C/I	0	0	0
Number of publications authored jointly with faculty at locations other than FSU	0	0	0

*Please have a list of relevant publications available if requested.***OTHER PUBLICATIONS AND CONFERENCE PAPERS**

	2006–2007	2009–2010	2010–2011
Number of extension or outreach publications	9	0	4
Number of national conference papers submitted	4	0	2
Number of national conference papers accepted	4	0	2
DATE, CONFERENCE AND NAME OF PRESENTATION(S)	*	N/A	*
Number of regional conference papers submitted	0	0	0
Number of regional conference papers accepted	0	0	0
DATE, CONFERENCE AND NAME OF PRESENTATION(S)	*	N/A	*

***National Conference Papers**

2006-2007:

Florida's Online Biodiversity Matrix Mapping Tool. Jon Oetting, Florida Natural Areas Inventory

Iterative Site Selection to Identify Conservation Priorities Using Natural Heritage Data. (30 min.) Amy Knight, FNAI

Handheld Data Collection Tools. Dan Hipes and Gary Knight, Florida Natural Areas Inventory; Lynn Kutner and Rob Solomon, NatureServe

A Web-based Approach to Invasive Species Data Aggregation, Mapping and Decision-making. (30 min.) Meg Wilkinson and D.J. Evans, New York NHP; Gary Knight, Florida Natural Areas Inventory

2010 – 2011:

ESRI National Conference, San Diego, CA, July 12-16, 2010 iMapInvasives: A Nationwide Application for Managing Invasive Exotic Species

Geo-Tracking Invasive Species With iMapInvasives. Meg Wilkinson (New York Natural Heritage Program), Gary Knight (Florida Natural Areas Inventory), and Tom Smith (Virginia Natural Heritage Program).

Regional Conference Papers

2010 - 2011: Cross, Lou. 2011. SHRUG users conference.

ANNUAL REPORT

Does the Center or Institute produce an annual report? If so, please have copies available or provide the web link.

No

STUDENT PUBLICATIONS

	2006–2007	2009–2010	2010–2011
Number of student theses credited to or associated with the C/I	0	0	0
Number of dissertations	0	0	0
Number of any other student papers	0	0	0

PROFESSIONAL DEVELOPMENT AND ASSISTANCE

Consulting

	2006–2007	2009–2010	2010–2011
Number of consulting contracts	0	1	1
Name of consulting recipient(s)	N/A	NACIS	NACIS
Consulting Subject or Topic	N/A	Support	Support
Amount of funding provided through general funds of the C/I	0	0	0
Amount of funding obtained through contract in addition to general C/I funds	0	\$5,000	\$5,000

Technical Assistance

	2006–2007	2009–2010	2010–2011
Number of technical assistance sessions or seminars offered	7	2	4
Name of technical assistance recipient(s)	See list	See list	See list
Technical Assistance Subject or Topic	See list	See list	See list
Amount of Funding	\$45,091	\$23,192	\$35,031

2006 – 2007:

Florida Fish and Wildlife Conservation Commission, Statewide Assessment of the Current Status and Distribution of FNAI's Tracked Butterfly Species on Florida's Conservation Lands, 3-year grant (7/1/2007 – 6/30/2010), \$69,575

National Center for Education Statistics, A Conceptual User-friendly Information Dashboard for the Public Library Geographic Database, \$5,900

Online Computer Library Center (OCLC), Closure of Library Branches and User Accessibility, \$13,000

2006. Carrabelle publications design. \$1,000.

2006. Gulf County publications design. \$1,000.

2006. Apalachicola publications design. \$1,000.

2006. US Board on Geographic Names.

2009 – 2010:

US Board on Geographic Names.

2010 – 2011:

Florida Department of Revenue, The Possible Role of GIS in Helping Solve User Issues with their GeoTAX system, \$10,000

Florida Fish and Wildlife Conservation Commission, From Data to Agency Action: Developing Land Management Guidelines for Florida's Imperiled and Declining Butterfly Species, 3-year grant (7/1/2010 – 6/3/2013), \$56,315

Northwest Florida Water Management District, Elinor Klapp-Phipps Park Golden Banded-Skipper Research Project, \$6,260

CONFERENCES OR SYMPOSIA

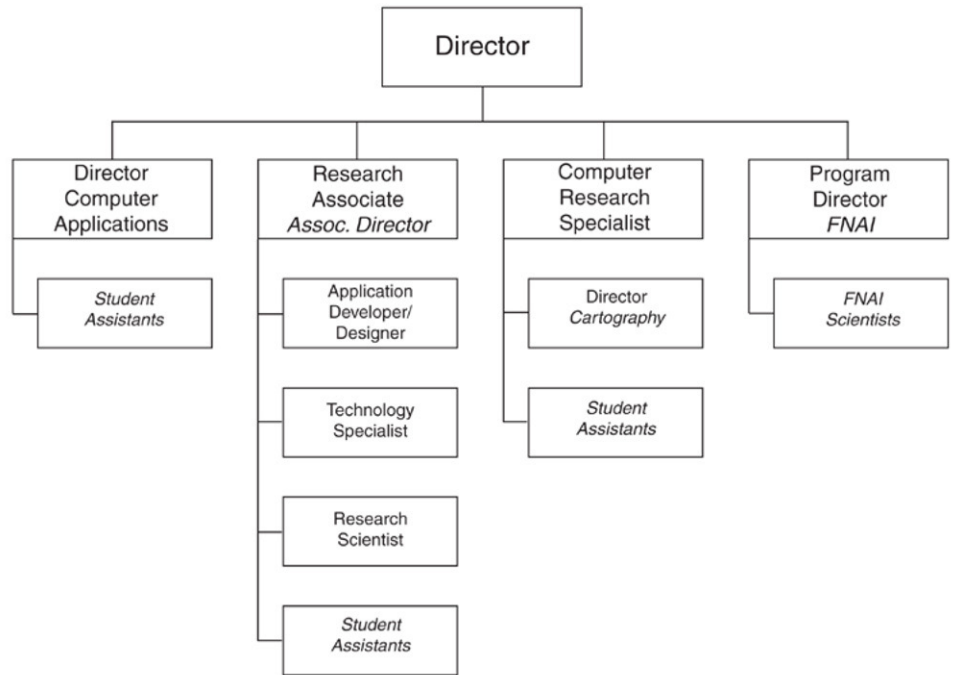
How many conferences or symposia has the Center or Institute sponsored or hosted from 2006-2007 through 2010-2011? Please list.

Three.
Seven Hills Regional User Group (SHRUG) (2)
Regional GIS Conference

Comments or additional information

MANAGEMENT

Center/Institute organizational
chart



Is the Center or Institute
legislatively created?

Yes

Does the Center/Institute have an
advisory board?

No

How often are meetings held?

Does the board manage the C/I
or does it serve in an advisory
capacity?

Please describe and include a list
of current members.

<i>How long has the Center/Institute director served?</i>	Approximately 15 years
<i>How does the Center/Institute directorship change?</i>	The directorship changes through FSU's standard hiring process, with the Institute director's immediate supervisor, Dr. Robert B. Bradley, Vice President for Planning and Programs, making the hiring decision.
<i>Are there other issues associated with management transition?</i>	No
<i>If there are multiple sites, how are they administered? Who has the final oversight?</i>	
<i>Comments or additional information</i>	

ADDITIONAL ISSUES

<i>Issues facing the Center or Institute</i>	<ul style="list-style-type: none"> • Maintaining our current level of C&G support • Securing resources to maintain and keep current our IT infrastructure • Recruitment of students with appropriate technical expertise
--	---

OVERALL EVALUATION

- ✓ The Florida Resources and Environmental Analysis Center (FREAC) demonstrates congruence with its mission through many efforts related to cartography, geographic information systems, multimedia programming, web design, and desktop publishing. It is very well-regarded as evidenced by the large number of outside contracts with a variety of federal, state and local entities.
- ✓ The average return on state E&G funds is 1:7.86.
- ✓ FREAC provides a unique service for its customers and colleagues and should continue. Its work results in numerous contracts offering publications, consultations and presentations at regional and national conferences. It has sponsored three conferences. It provides employment for a large number of persons (over 29 FTE), both faculty and professional, including research assistants.
- ✓ As evidenced by the demand for its services and its success, there is no need for a change in FREAC's mission or organizational structure.
- ✓ Funding for the Center consists primarily of contracts and grants. As long as this funding source continues, there is no need for budget adjustments.
- ✓ No need for reclassification is present.
- ✓ Retain active status.

BEACHES AND SHORES RESOURCE CENTER (BSRC)

203 Morgan Building
2035 E. Paul Dirac Dr.
Tallahassee, FL 32310-3700

Phone: (850) 644-2847
Director: Dr. Todd L. Walton, Jr.
twalton@fsu.edu
(850) 644-2847
Budget and funding contact: Katie Brock
kbrock@fsu.edu
(850) 644-4564
Web site: <http://beach10.beaches.fsu.edu>

MISSION AND ACTIVITIES

What is the Center's or Institute's mission statement?

The center's purpose/mission is to apply its expertise in solving coastal engineering problems to assist state agencies in management of beach resources. Examples include longshore sediment transport, beach-dune erosion and extreme storm/hurricane water level return periods.

Briefly, what activities are consistently performed that move the Center/Institute toward meeting its established mission?

- a. Continued development of expertise in shoreline processes, shoreline modeling, beach performance modeling, and storm erosion risk assessment;
- b. continued benchmarking of state utilized erosion models;
- c. continued benchmarking of state utilized storm surge model;
- d. continued assistance to the State in management of sand resources via technical sediment budget updates at inlets; and
- e. continued assistance to Florida through technical help on permitting issues and quality control assessments of the state survey database.

What is the Center or Institute best known for?

Technical assistance, models, and model operation and benchmarking provided in establishment of Coastal Construction Control Lines throughout Florida. These regulatory lines provide prevention of damage to coastal property through building guidelines (i.e. elevation, distance from shoreline, etc.) and reduction of flooding to inland via preserving dunes along the coast.

What is the greatest strength of the Center or Institute?

Experience in running and benchmarking state utilized models as well as solutions to other coastal regulatory issues.

What are the most significant challenges facing the Center or Institute?

Funding requirements needed to maintain expertise within the Center.

FUNDING (2006–2007 THROUGH 2010–2011)

What is the source and amount of expenditures from 2006-2007 to 2010-2011 for the Center/Institute using the following categories?

Expenditures	2006–2007	2009–2010	2010–2011
University (E&G)	N/A	N/A	N/A
State (General Revenue Other than E&G)	N/A	N/A	N/A
State (C&G)	\$999,011	\$874,893	\$765,119
Federal	N/A	N/A	\$65,000
Local	N/A	N/A	N/A
Private / nonprofit organization	N/A	\$9,358	\$39,441
Endowment proceeds	N/A	N/A	N/A
Proceeds from patents or royalties	N/A	N/A	N/A
Sales from services or products	N/A	N/A	N/A
Others (specify)	N/A	N/A	N/A
Total expenditures	\$999,011	\$884,251	\$869,560

ENDOWMENT INFORMATION

Is the Center/Institute supported in whole or in part by proceeds from an endowment? No

What is the amount of the endowment?

Where is the endowment managed?

Does the C/I spend only interest earnings?

Does the C/I spend part of the capital of the endowment?

CONTRACT AND GRANT INFORMATION

	2006–2007	2009–2010	2010–2011
Number of proposals submitted	1	1	3
Number of proposals funded	1	1	3
Proposals Made Jointly with Individuals not Directly associated with the Center / Institute	0	0	0
Total amount of awards	\$1,137,497	\$931,750	\$1,174,647

****NOTE:** Proposals submitted during a fiscal year are not necessarily funded in the same fiscal year or are awards and/or transfers from an existing award. Therefore, the number of proposals funded and total amount of awards includes data on all proposal funding received for this period of time.

Were any of the contracts or grants multi-year? Yes

How many years does the Center or Institute have left on any current contract or grant (past 2010-2011)? One year

Have any contracts or grants been renewed in the period from 2006-2007 to 2010-2011 and, if so, how many? Yes, one

OTHER CENTER OR INSTITUTE ACTIVITIES

Has the Center/Institute generated any patents or royalties?

Has the Center or Institute applied for a patent that has not yet been granted? If so, please describe.

Comments or additional information.

EMPLOYMENT

(2006–2007 THROUGH 2010–2011)

UNIVERSITY POSITIONS ASSOCIATED WITH THE C/I:

	2006–2007	2009–2010	2010–2011
Number of Faculty (FTE)	2	2	2
Number of A&P and USPS positions (FTE)	8	5	3
Total Positions	10	7	5

STUDENT EMPLOYMENT (INCLUDE GRADUATE AND UNDERGRADUATE):

	2006–2007	2009–2010	2010–2011
Number of research assistants employed (FTE)	N/A	N/A	N/A
Number of teaching assistants employed (FTE)	N/A	N/A	N/A
Number of interns (with stipend or OPS)	N/A	N/A	N/A
Number of interns (without pay)	N/A	N/A	N/A
Total student positions	N/A	N/A	N/A

**OTHER STUDENT FINANCIAL BENEFITS
(INCLUDING GRADUATE AND UNDERGRADUATE):**

	2006–2007	2009–2010	2010–2011
	Number/Amount	Number/Amount	Number/Amount
Out of state tuition waivers	0/0	0/0	0/0
Student fellowships	0/0	0/0	0/0
Scholarships	0/0	0/0	0/0
Post-doctoral support	0/0	0/0	0/0
Amt of student travel support	0/0	0/0	0/0
Amt of registration for student conference attendance	0/0	0/0	0/0
Other support (specify)	0/0	0/0	0/0

Comments or additional information

**RESEARCH AND EXTENSION
(2006–2007 THROUGH 2010–2011)**

Note: web-delivered and CD-Rom publications are counted in these totals.

PUBLICATIONS IN REFEREED JOURNALS

Note: Do not include those credited to a faculty member's primary academic department that are unrelated to the C/I mission.

	2006–2007	2009–2010	2010–2011
Number of faculty publications	2	2	2
Number of student publications	0	0	0
Number of publications authored jointly with other faculty at FSU	0	0	0
Number of publications authored jointly with students in the C/I	0	0	0
Number of publications authored jointly with faculty at locations other than FSU	1	2	2

Please have a list of relevant publications available if requested.

OTHER PUBLICATIONS AND CONFERENCE PAPERS

	2006–2007	2009–2010	2010–2011
Number of extension or outreach publications	0	0	0
Number of national conference papers submitted	1	0	1
Number of national conference papers accepted	1	0	1
DATE, CONFERENCE AND NAME OF PRESENTATION(S)	*	N/A	**
Number of regional conference papers submitted	0	0	0
Number of regional conference papers accepted	0	0	0
DATE, CONFERENCE AND NAME OF PRESENTATION(S)	N/A	N/A	N/A

*2006 Solutions to Coastal Disasters, Barrier Island Beach Fill Storm Protection

**2011 Coastal Sediments 2011, Coastal Processes in the Vicinity of St. Augustine Inlet

ANNUAL REPORT

Does the Center or Institute
produce an annual report? If so,
please have copies available or
provide the web link.

No

STUDENT PUBLICATIONS

	2006–2007	2009–2010	2010–2011
Number of student theses credited to or associated with the C/I	0	0	0
Number of dissertations	0	0	0
Number of any other student papers	0	0	0

PROFESSIONAL DEVELOPMENT AND ASSISTANCE

Consulting

	2006–2007	2009–2010	2010–2011
Number of consulting contracts	0	0	0
Name of consulting recipient(s)	0	0	0
Consulting Subject or Topic	N/A	N/A	N/A
Amount of funding provided through general funding of the C/I	0	0	0
Amount of funding obtained through contract in addition to general C/I funds	0	0	0

Technical Assistance

	2006–2007	2009–2010	2010–2011
Number of technical assistance sessions or seminars offered	0	0	0
Name of technical assistance recipient(s)	N/A	N/A	N/A
Technical Assistance Subject or Topic	N/A	N/A	N/A
Amount of Funding	0	0	0

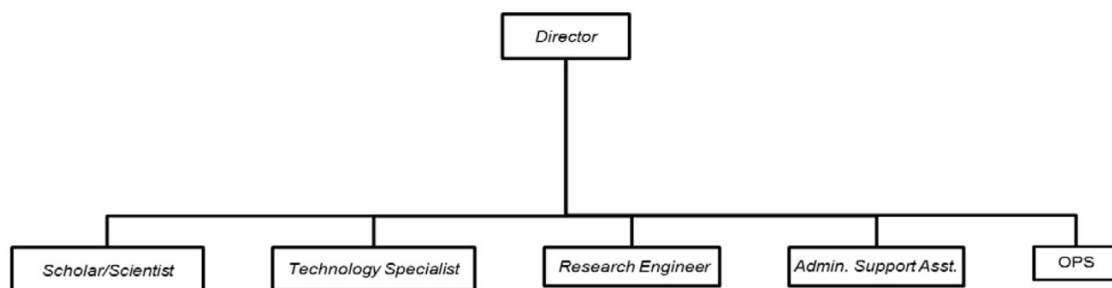
CONFERENCES OR SYMPOSIA

How many conferences or symposia has the Center or Institute sponsored or hosted from 2006-2007 through 2010-2011? Please list.

Comments or additional information

MANAGEMENT

Center/Institute organizational chart



Is the Center or Institute legislatively created?

No

Does the Center/Institute have an advisory board?

No

How often are meetings held?

Does the board manage the C/I or does it serve in an advisory capacity?

Please describe and include a list of current members.

How long has the Center/Institute director served?

Eight years

How does the Center/Institute directorship change?

The directorship changes through FSU's standard hiring process, with the Institute director's immediate supervisor, currently Dr. Robert B. Bradley, Vice President for Planning and Programs, making the hiring decision.

Are there other issues associated with management transition?

The Director will step down July 1, 2012 and a new Director selected.

If there are multiple sites, how are they administered? Who has the final oversight?

Comments or additional information

ADDITIONAL ISSUES

Issues facing the Center or Institute

Continued funding reductions in state contracting have resulted in personnel changes.

OVERALL EVALUATION

- ✓ The activities of the Beaches and Shores Resource Center (BSRC) are consistent with its mission of assisting state agencies with the management of its beach resources. They include applications related to establishment of coastal construction regulations and benchmarking of state-utilized erosion and storm surge models.
- ✓ There is no state E&G funding; an ROI calculation is not applicable.
- ✓ The Center's activities are helpful in managing beach resources valued by the State Department of Environmental Protection and should continue. Research and presentation at national conferences provide additional information and offer expertise on a continuing basis. It provides employment for 5 faculty and professional positions.
- ✓ There is no need to change their mission or organizational structure.
- ✓ The BSRC is experiencing a decline in financial support that affects its ability to retain expertise. Efforts to obtain federal and private funding have been successful and will continue.
- ✓ No change in classification is necessary.
- ✓ Retain active status.

CENTER FOR THE ADVANCEMENT OF HUMAN RIGHTS (CAHR)

426 West Jefferson St.
Tallahassee, FL 32301

Phone: (850) 644-4550
Director: Dr. Terrence Coonan
tcoonan@admin.fsu.edu
(850) 644-4550
Budget and funding contact: Katie Brock
kbrock@fsu.edu
(850) 644-4564
Web site: <http://www.cahr.fsu.edu>

MISSION AND ACTIVITIES

What is the Center's or Institute's mission statement?

The Center for the Advancement of Human Rights engages in interdisciplinary advocacy, education and research on persistent and emerging issues of human rights. It aims to make significant contributions to the promotion, understanding and protection of human rights in this country and abroad. Its primary focus is on training of human rights advocates and serve as a resource center to educate, inform and link students, organizations, lawyers, policymakers, and those engaged in human rights work worldwide.

Briefly, what activities are consistently performed that move the Center/Institute toward meeting its established mission?

- The Center continues to develop human rights courses and continues to teach these courses every term;
- the Center continues to sponsor students in human rights placements throughout the world; and
- the Center continues to work with various human rights organizations to address human rights violations.

What is the Center or Institute best known for?

Human rights advocacy, including Human Trafficking

What is the greatest strength of the Center or Institute?

Providing students hands-on experience on human rights issues

What are the most significant challenges facing the Center or Institute?

Funding continues to be one of the challenges the Center faces every year

FUNDING (2006–2007 THROUGH 2010–2011)

What is the source and amount of expenditures from 2006-2007 to 2010-2011 for the Center/Institute using the following categories?

Expenditures	2006–2007	2009–2010	2010–2011
University (E&G)	\$210,128	\$248,427	\$215,670
State (General Revenue Other than E&G)	N/A	N/A	N/A
State (C&G)	N/A	N/A	N/A
Federal	\$33,740	\$31,837	\$4,161
Local	\$13,236	\$106,763	N/A
Private / nonprofit organization	\$39,644	\$60	N/A
Endowment proceeds	\$248,669	\$271,931	\$214,932
Proceeds from patents or royalties	N/A	N/A	N/A
Sales from services or products	N/A	N/A	N/A
Others (specify)	N/A	N/A	N/A
Total expenditures	\$545,417	\$659,018	\$434,763

ENDOWMENT INFORMATION

<i>Is the Center/Institute supported in whole or in part by proceeds from an endowment?</i>	Yes
<i>What is the amount of the endowment?</i>	\$3,000,000 initially donated by an anonymous donor and matched by the state
<i>Where is the endowment managed?</i>	FSU Foundation
<i>Does the C/I spend only interest earnings?</i>	Yes
<i>Does the C/I spend part of the capital of the endowment?</i>	At this time, the endowment is 20% underwater

CONTRACT AND GRANT INFORMATION

	2006–2007	2009–2010	2010–2011
Number of proposals submitted	3	2	4
Number of proposals funded	3	2	5
Proposals Made Jointly with Individuals not Directly associated with the Center / Institute	N/A	N/A	N/A
Total amount of awards	\$159,375	\$115,000	\$106,080

****NOTE:** Proposals submitted during a fiscal year are not necessarily funded in the same fiscal year or are awards and/or transfers from an existing award. Therefore, the number of proposals funded and total amount of awards includes data on all proposal funding received for this period of time.

<i>Were any of the contracts or grants multi-year?</i>	Yes
<i>How many years does the Center or Institute have left on any current contract or grant (past 2010-2011)?</i>	1
<i>Have any contracts or grants been renewed in the period from 2006-2007 to 2010-2011 and, if so, how many?</i>	7

OTHER CENTER OR INSTITUTE ACTIVITIES

Has the Center/Institute generated any patents or royalties? No

Has the Center or Institute applied for a patent that has not yet been granted? If so, please describe. No

Comments or additional information.

EMPLOYMENT

(2006–2007 THROUGH 2010–2011)

UNIVERSITY POSITIONS ASSOCIATED WITH THE C/I:

	2006–2007	2009–2010	2010–2011
Number of Faculty (FTE)	1.41	2.27	1.86
Number of A&P and USPS positions (FTE)	.83	1	1
Total Positions	2.24	3.27	2.86

STUDENT EMPLOYMENT (INCLUDE GRADUATE AND UNDERGRADUATE):

	2006–2007	2009–2010	2010–2011
Number of research assistants employed (FTE)	.13	N/A	.10
Number of teaching assistants employed (FTE)	N/A	N/A	N/A
Number of interns (with stipend or OPS)	N/A	N/A	N/A
Number of interns (without pay)	N/A	N/A	N/A
Total student positions	.13	N/A	.10

**OTHER STUDENT FINANCIAL BENEFITS
(INCLUDING GRADUATE AND UNDERGRADUATE):**

	2006–2007	2009–2010	2010–2011
	Number/Amount	Number/Amount	Number/Amount
Out of state tuition waivers	N/A/N/A	N/A/N/A	N/A/N/A
Student fellowships	N/A/N/A	N/A/N/A	N/A/N/A
Scholarships	N/A/N/A	N/A/N/A	N/A/N/A
Post-doctoral support	N/A/N/A	N/A/N/A	N/A/N/A
Amt of student travel support	N/A/\$12,300	0/\$14,250	N/A/\$9,550
Amt of registration for student conference attendance	N/A/N/A	N/A/N/A	N/A/N/A
Other support (Human Rights Placements)	N/A/\$32,000	N/A/\$34,500	N/A/\$37,900

Comments or additional information

**RESEARCH AND EXTENSION
(2006–2007 THROUGH 2010–2011)**

Note: web-delivered and CD-Rom publications are counted in these totals.

PUBLICATIONS IN REFEREED JOURNALS

Note: Do not include those credited to a faculty member's primary academic department that are unrelated to the C/I mission.

	2006–2007	2009–2010	2010–2011
Number of faculty publications	0	0	0
Number of student publications	0	0	0
Number of publications authored jointly with other faculty at FSU	0	0	0
Number of publications authored jointly with students in the C/I	0	0	0
Number of publications authored jointly with faculty at locations other than FSU	0	0	0

*Some publications include project reports.

Please have a list of relevant publications available if requested.

OTHER PUBLICATIONS AND CONFERENCE PAPERS

	2006–2007	2009–2010	2010–2011
Number of extension or outreach publications	4	4	2
Number of national conference papers submitted	4	2	3
Number of national conference papers accepted	4	2	3
DATE, CONFERENCE AND NAME OF PRESENTATION(S)	*	**	***
Number of regional conference papers submitted	0	0	0
Number of regional conference papers accepted	0	0	0
DATE, CONFERENCE AND NAME OF PRESENTATION(S)	NA	NA	N/A

*Religion After September 11: A Global Congress, Montreal, September 2006.

Three presentations on comparative ethics (universality, ethical rules and power), Workshop on Sharing Values: Methodologies for Interreligious Partnerships in Applied Ethics, Geneva, Switzerland, September 2007.

**Defining Global Ethics,”Presentation to Conference on Care Comparison: Sharing Values across Cultures and Religions, Globethics.net, Nairobi, January 2009.

“Roger Williams and Freedom of Conscience and Religion as a Natural Right,” Conference on Religion, Ethics, and Peace, sponsored by Harvard Divinity School and the Kroc Institute for International Peace, (University of Notre Dame), Harvard University, November 2009.

****“Christian and Confucian Influences on the Universal Declaration of Human Rights: A Comparative Inquiry,” First Nishan Forum on World Civilization, Shangdong, China, September 2010.

“Confucian Contributions to the Universal Declaration of Human Rights: The Case of P.C. Chang” Faculty of Arts Public Lecture, Hong Kong Baptist University, September 2010.

“The Confucian Understanding of the Legitimate Use of Military Force” (with Jonathan Chan), Public Symposium on Just War and Pacifism in Chinese Thought, Hong Kong Baptist University, October 2010.

ANNUAL REPORT

Does the Center or Institute produce an annual report? If so, please have copies available or provide the web link.

No

STUDENT PUBLICATIONS

	2006–2007	2009–2010	2010–2011
Number of student theses credited to or associated with the C/I	4	13	4
Number of dissertations	0	9	8
Number of any other student papers	7	23	14

PROFESSIONAL DEVELOPMENT AND ASSISTANCE

Consulting

	2006–2007	2009–2010	2010–2011
Number of consulting contracts	1	1	0
Name of consulting recipient(s)	Robin Thompson	Robin Thompson	N/A
Consulting Subject or Topic	Human Trafficking	Human Trafficking	N/A
Amount of funding provided through general funds of the C/I	\$52,696	\$25,000	N/A
Amount of funding obtained through contract in addition to general C/I funds	\$100,000 FLDOE \$60,000 FL Bar Assoc	N/A	N/A

Technical Assistance

	2006–2007	2009–2010	2010–2011
Number of technical assistance sessions or seminars offered	14	12	17
Name of technical assistance recipient(s)	*	*	*
Technical Assistance Subject or Topic	**	**	**
Amount of Funding	N/A	N/A	N/A

*Florida Law Enforcement, Florida Adult Educators

**Human Trafficking

CONFERENCES OR SYMPOSIA

How many conferences or symposia has the Center or Institute sponsored or hosted from 2006-2007 through 2010-2011? Please list.

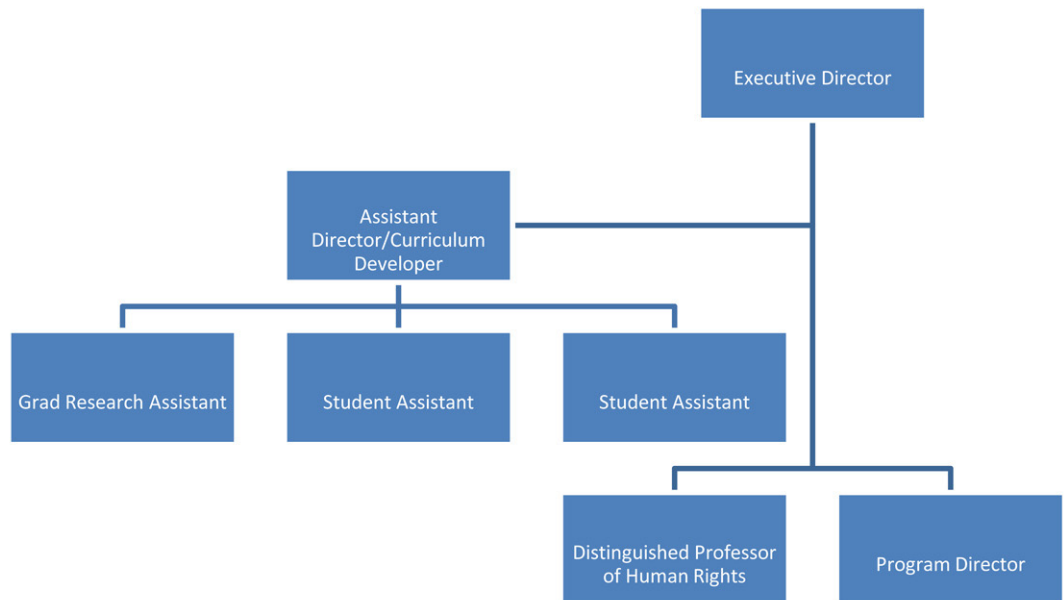
May 16–18, 2008 Co-sponsoring the Sudan Studies Association 27th Annual Conference

January 30–31, 2009 International Criminal Tribunals: Problems and Prospects Symposium

Comments or additional information

MANAGEMENT

Center/Institute organizational chart



Is the Center or Institute legislatively created?

No

Does the Center/Institute have an advisory board?

N/A

How often are meetings held?

Does the board manage the C/I or does it serve in an advisory capacity?

Please describe and include a list of current members.

<i>How long has the Center/Institute director served?</i>	11 years
<i>How does the Center/Institute directorship change?</i>	The directorship changes through FSU's standard hiring process, with the Institute director's immediate supervisor, currently Dr. Robert B. Bradley, Vice President for Planning and Programs, making the hiring decision.
<i>Are there other issues associated with management transition?</i>	No
<i>If there are multiple sites, how are they administered? Who has the final oversight?</i>	
<i>Comments or additional information</i>	

ADDITIONAL ISSUES

<i>Issues facing the Center or Institute</i>	The Center's endowment at this time is 20% underwater. Budget reductions have impacted the level of involvement on human rights projects and initiatives such as professional development for staff, abroad internship placements for students, development of new human rights courses and human rights awareness. The Center has been faced with using funding for daily operations from its own Foundation account quarterly distributions which was established to work on its advocacy work, development of human rights courses, and the sponsorship of human rights placements.
--	--

OVERALL EVALUATION

- ✓ The Center's focus is on training human rights advocates and serving as a resource center to educate, inform and link worldwide students, organizations, policymakers and others engaged in human rights work. This is accomplished through research, presentations at national and international conferences and technical assistance seminars annually.
- ✓ The Center's return on E&G investment is 1:1.42.
- ✓ The Center highlights FSU's efforts in the area of human rights and coordinates efforts for those interested in the field statewide, nationally and internationally. It provides students the opportunity to engage in research that culminates in graduate degrees and provides employment for 2.8 FTE faculty and professional staff. There is a small opportunity for research assistant employment as well.
- ✓ No changes are needed in its mission or organizational structure.
- ✓ The Center is funded primarily through E&G and Endowment proceeds. During the last reporting year, the Center's funding was reduced by about 34%. The use of Endowment funds is providing needed assistance but this situation cannot continue indefinitely. CAHR is increasing its grant proposals in order to maintain its level of research and assistance. The Center also needs to conduct fundraising to augment its endowment.
- ✓ No change in classification is recommended.
- ✓ Retain active status.